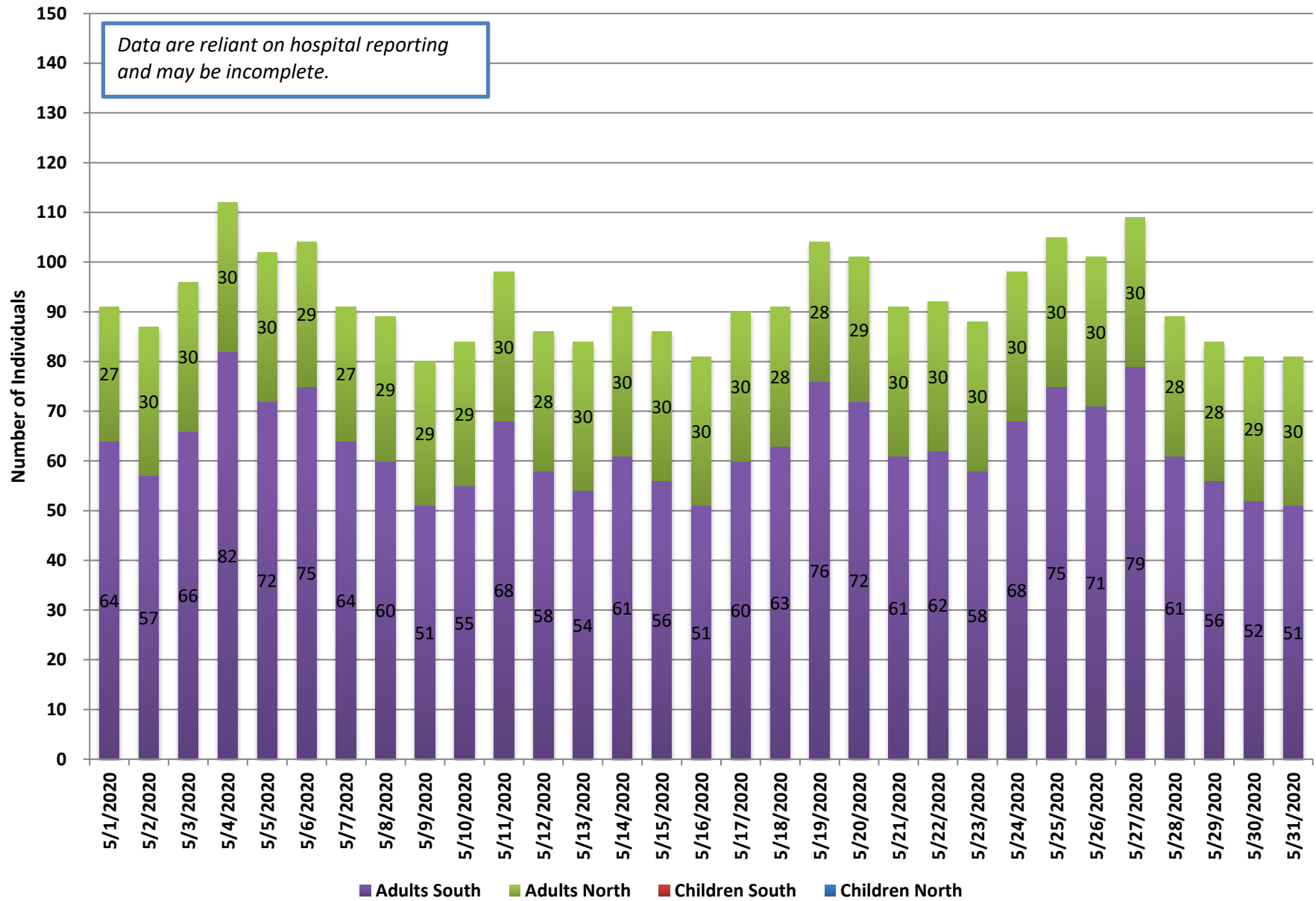


Behavioral Health Chart Pack

June 2020

Individuals Waiting in Emergency Rooms for Behavioral Health Services



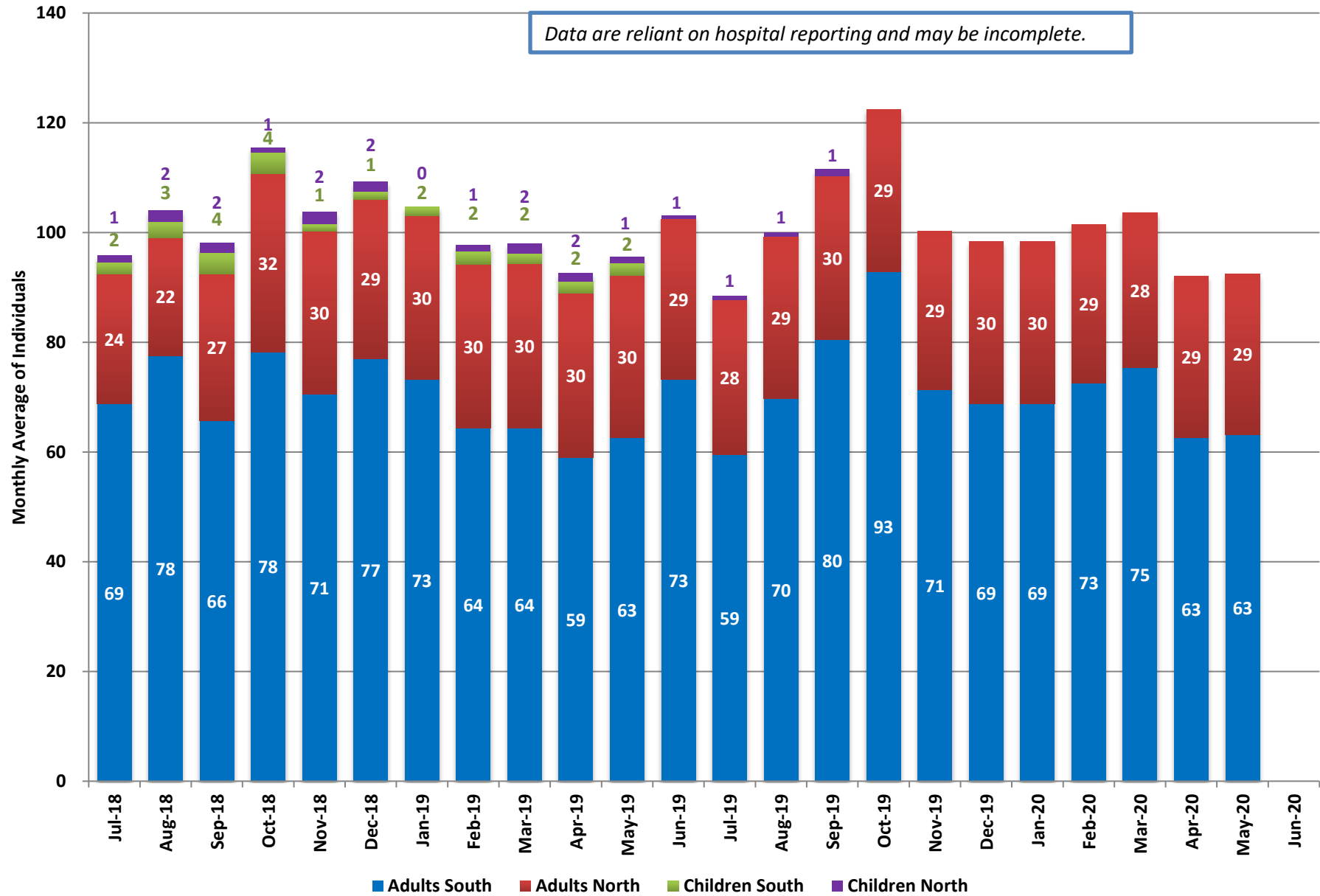
Individuals Waiting in Emergency Rooms for Behavioral Health Services

	Adults South	Children South	Adults North	Children North	Total
5/1/2020	64		27		91
5/2/2020	57		30		87
5/3/2020	66		30		96
5/4/2020	82		30		112
5/5/2020	72		30		102
5/6/2020	75		29		104
5/7/2020	64		27		91
5/8/2020	60		29		89
5/9/2020	51		29		80
5/10/2020	55		29		84
5/11/2020	68		30		98
5/12/2020	58		28		86
5/13/2020	54		30		84
5/14/2020	61		30		91
5/15/2020	56		30		86
5/16/2020	51		30		81
5/17/2020	60		30		90
5/18/2020	63		28		91
5/19/2020	76		28		104
5/20/2020	72		29		101
5/21/2020	61		30		91
5/22/2020	62		30		92
5/23/2020	58		30		88
5/24/2020	68		30		98
5/25/2020	75		30		105
5/26/2020	71		30		101
5/27/2020	79		30		109
5/28/2020	61		28		89
5/29/2020	56		28		84
5/30/2020	52		29		81
5/31/2020	51		30		81

Data are reliant on hospital reporting and may be incomplete.

Individuals Waiting in Emergency Rooms for Behavioral Health Services (Monthly Average)

Data are reliant on hospital reporting and may be incomplete.



Individuals Waiting in Emergency Rooms for Behavioral Health Services

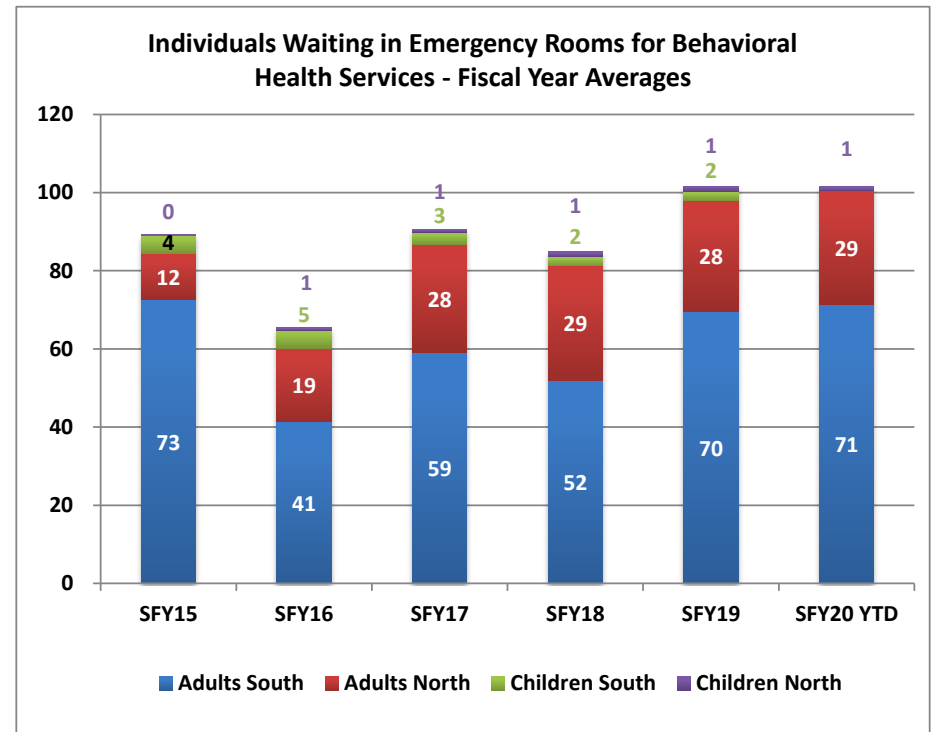
Monthly Average

	Adults South	Adults North	Children South	Children North	Total
Jul-18	69	24	2	1	96
Aug-18	78	22	3	2	104
Sep-18	66	27	4	2	98
Oct-18	78	32	4	1	115
Nov-18	71	30	1	2	104
Dec-18	77	29	1	2	109
Jan-19	73	30	2	0	105
Feb-19	64	30	2	1	98
Mar-19	64	30	2	2	98
Apr-19	59	30	2	2	93
May-19	63	30	2	1	96
Jun-19	73	29		1	103
Jul-19	59	28		1	88
Aug-19	70	29		1	100
Sep-19	80	30		1	112
Oct-19	93	29			122
Nov-19	71	29			99
Dec-19	69	30			98
Jan-20	69	30			98
Feb-20	73	29			101
Mar-20	75	28			104
Apr-20	63	29			92
May-20	63	29			92
Jun-20					

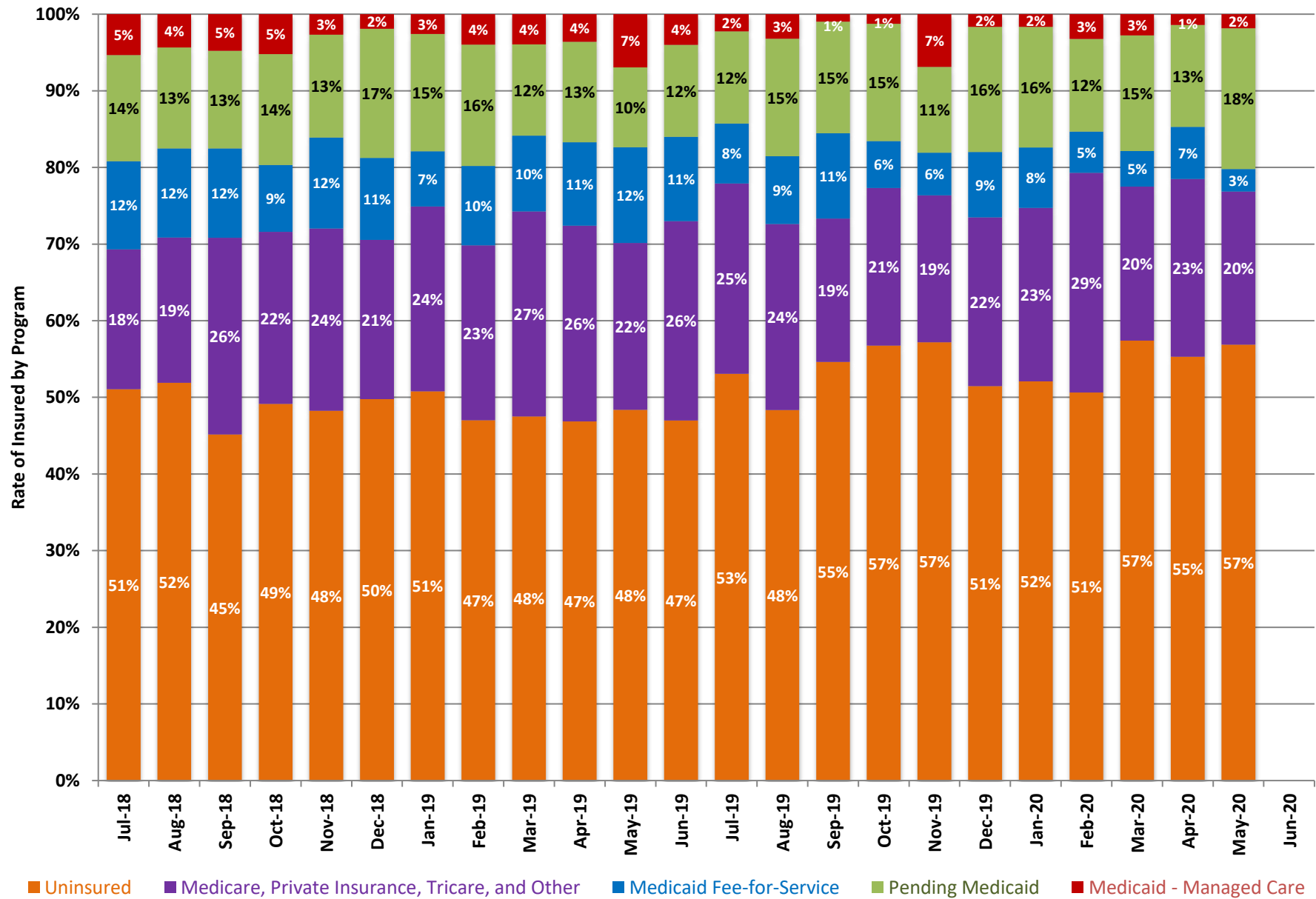
* Data are reliant on hospital reporting and may be incomplete.

Fiscal Year Averages

Fiscal Year	Adults South	Adults North	Children South	Children North	Total	Percent Change
SFY15	73	12	4	0	89	
SFY16	41	19	5	1	64	-28%
SFY17	59	28	3	1	91	41%
SFY18	52	29	2	1	85	-6%
SFY19	70	28	2	1	101	20%
SFY20 YTD	71	29		1	101	-1%



Insurance Status of Adults Waiting in Emergency Rooms for Behavioral Health Services



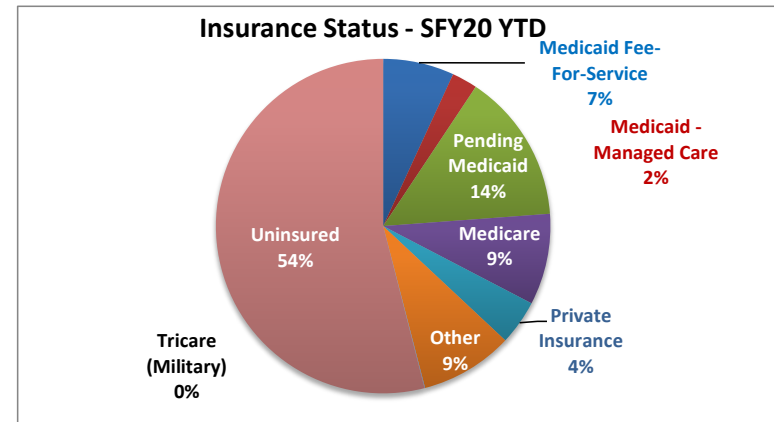
Insurance Status of Adults Waiting in Emergency Rooms for Behavioral Health Services

	Medicaid Fee-For-Service		Medicaid - Managed Care		Pending Medicaid		Medicare		Private Insurance		Tricare (Military)		Other		Uninsured	
	Number	Percent	Number	Percent	Number	Percent	Number	Percent	Number	Percent	Number	Percent	Number	Percent	Number	Percent
Jul-18	3	12%	4	5%	11	14%	5	6%	3	3%	0	0%	7	9%	40	51%
Aug-18	10	12%	4	4%	11	13%	6	7%	4	5%	0	0%	6	7%	44	52%
Sep-18	10	12%	4	5%	11	13%	7	9%	6	7%	0	0%	8	10%	38	45%
Oct-18	9	9%	5	5%	14	14%	9	9%	5	5%	0	0%	8	9%	49	49%
Nov-18	10	12%	2	3%	11	13%	7	9%	4	5%	1	1%	8	9%	41	48%
Dec-18	9	11%	2	2%	15	17%	5	6%	4	5%	0	0%	9	10%	43	50%
Jan-19	7	7%	2	3%	14	15%	8	9%	5	5%	0	0%	9	10%	47	51%
Feb-19	8	10%	3	4%	13	16%	7	9%	3	4%	0	0%	8	10%	37	47%
Mar-19	6	10%	2	4%	8	12%	5	8%	6	9%	0	0%	7	10%	32	48%
Apr-19	6	11%	2	4%	8	13%	5	8%	6	9%	0	0%	5	8%	28	47%
May-19	7	12%	4	7%	6	10%	5	9%	4	7%	0	0%	3	5%	27	48%
Jun-19	6	11%	2	4%	7	12%	4	8%	6	12%	0	0%	3	6%	26	47%
Jul-19	4	8%	1	2%	5	12%	5	12%	3	7%	0	0%	3	7%	24	53%
Aug-19	5	9%	2	3%	9	15%	5	9%	3	5%	0	0%	6	10%	28	48%
Sep-19	7	11%	1	1%	10	15%	4	6%	2	4%	0	0%	6	9%	36	55%
Oct-19	4	6%	1	1%	11	15%	6	8%	3	4%	0	0%	6	8%	41	57%
Nov-19	3	6%	4	7%	6	11%	4	8%	2	4%	0	0%	4	7%	30	57%
Dec-19	5	9%	1	2%	9	16%	4	8%	2	4%	0	0%	6	10%	29	51%
Jan-20	5	8%	1	2%	10	16%	5	8%	3	5%	0	0%	6	10%	32	52%
Feb-20	3	5%	2	3%	7	12%	10	16%	3	5%	0	0%	4	7%	30	51%
Mar-20	3	5%	2	3%	11	15%	7	9%	2	2%	0	0%	6	8%	42	57%
Apr-20	4	7%	1	1%	7	13%	4	8%	2	3%	0	0%	6	12%	30	55%
May-20	2	3%	1	2%	11	18%	3	5%	2	4%	0	0%	7	11%	33	57%
Jun-20																

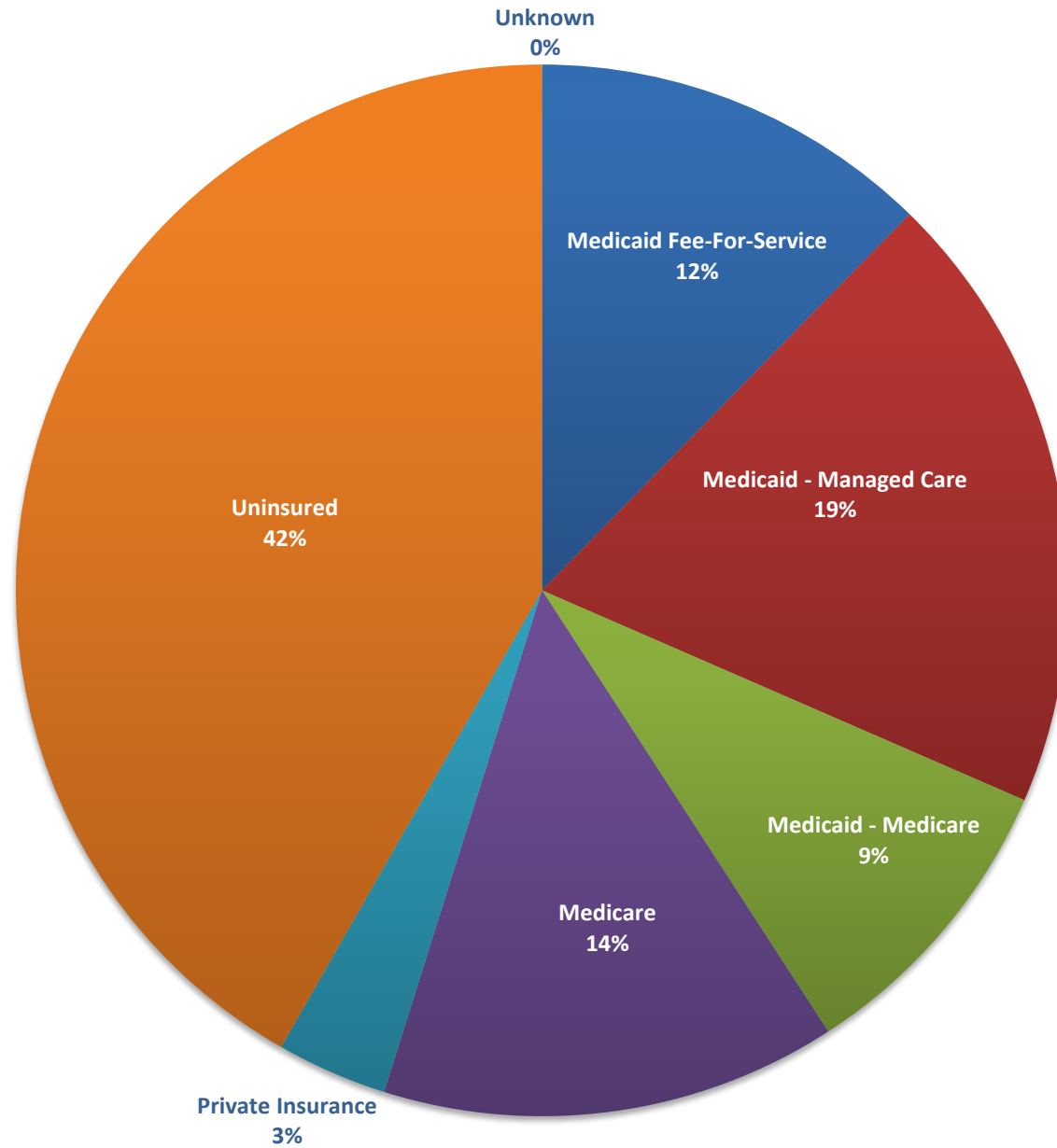
Note: This is the average for the month of the daily counts of individuals in each category.

Fiscal Year Averages

Insurance Status	SFY16	SFY17	SFY18	SFY19	SFY20 YTD
Medicaid Fee-For-Service	5%	10%	10%	11%	7%
Medicaid - Managed Care	4%	5%	3%	4%	2%
Pending Medicaid	18%	13%	12%	14%	14%
Medicare	8%	12%	10%	8%	9%
Private Insurance	2%	3%	7%	6%	4%
Other	21%	14%	10%	9%	9%
Tricare (Military)	0%	0%	0%	0%	0%
Uninsured	42%	43%	46%	49%	54%



Insurance Status of Adult Inpatient Clients - Statewide, SFY20 YTD



Insurance Status of Adult Inpatient Clients (Monthly Average)

DINI-TOWNSEND (NORTH)

	Medicaid Fee-For- Service	Medicaid- Managed Care	Medicaid- Medicare	Medicare	Private Insurance	Uninsured	Unknown
Jul-18	36%	21%	14%	9%	5%	14%	0%
Aug-18	30%	20%	13%	12%	4%	21%	1%
Sep-18	29%	20%	15%	10%	7%	18%	1%
Oct-18	26%	18%	11%	14%	7%	20%	3%
Nov-18	31%	13%	17%	13%	9%	17%	0%
Dec-18	28%	10%	25%	12%	7%	18%	0%
Jan-19	25%	14%	19%	7%	3%	30%	2%
Feb-19	24%	23%	20%	10%	3%	20%	0%
Mar-19	27%	18%	21%	14%	4%	16%	0%
Apr-19	20%	16%	19%	21%	6%	17%	0%
May-19	26%	14%	19%	15%	6%	20%	0%
Jun-19	19%	21%	23%	10%	5%	22%	0%
Jul-19	17%	21%	23%	20%	6%	13%	0%
Aug-19	27%	12%	21%	22%	3%	15%	0%
Sep-19	26%	12%	17%	30%	0%	17%	0%
Oct-19	24%	24%	20%	14%	0%	18%	0%
Nov-19	23%	19%	18%	12%	0%	29%	0%
Dec-19	23%	20%	22%	11%	0%	25%	0%
Jan-20	25%	15%	16%	11%	0%	32%	0%
Feb-20	22%	22%	16%	14%	1%	25%	0%
Mar-20	29%	16%	15%	5%	7%	28%	0%
Apr-20	30%	23%	20%	4%	3%	20%	0%
May-20							
Jun-20							

RAWSON-NEAL (SOUTH)

	Medicaid Fee-For- Service	Medicaid - Managed Care	Medicaid- Medicare	Medicare	Private Insurance	Uninsured	Unknown
Jul-18	9%	20%	0%	19%	0%	52%	0%
Aug-18	11%	21%	1%	18%	0%	49%	0%
Sep-18	12%	22%	4%	16%	0%	46%	0%
Oct-18	14%	21%	4%	16%	0%	45%	0%
Nov-18	13%	20%	6%	17%	0%	45%	0%
Dec-18	11%	22%	5%	13%	0%	49%	0%
Jan-19	12%	21%	9%	14%	1%	44%	0%
Feb-19	11%	21%	8%	15%	2%	44%	0%
Mar-19	13%	20%	6%	14%	1%	45%	0%
Apr-19	9%	19%	6%	15%	2%	48%	0%
May-19	8%	22%	6%	14%	7%	44%	0%
Jun-19	9%	21%	4%	14%	7%	45%	0%
Jul-19	11%	23%	4%	12%	2%	48%	0%
Aug-19	12%	19%	4%	14%	2%	50%	0%
Sep-19	14%	21%	7%	14%	2%	41%	0%
Oct-19	14%	24%	9%	13%	3%	37%	0%
Nov-19	11%	21%	7%	13%	6%	41%	0%
Dec-19	7%	18%	4%	13%	9%	49%	0%
Jan-20	6%	13%	9%	17%	7%	47%	0%
Feb-20	7%	12%	13%	16%	4%	48%	0%
Mar-20	7%	23%	9%	12%	3%	45%	0%
Apr-20	6%	18%	7%	14%	1%	53%	0%
May-20							
Jun-20							

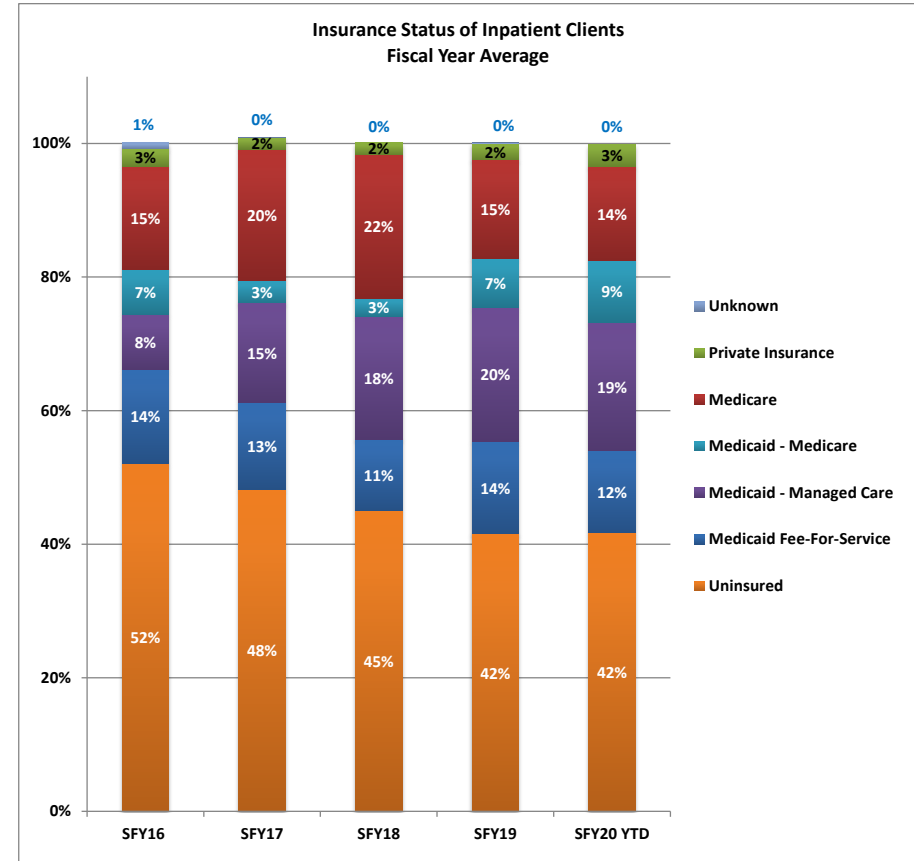
Insurance Status of Adult Inpatient Clients - Statewide

Statewide

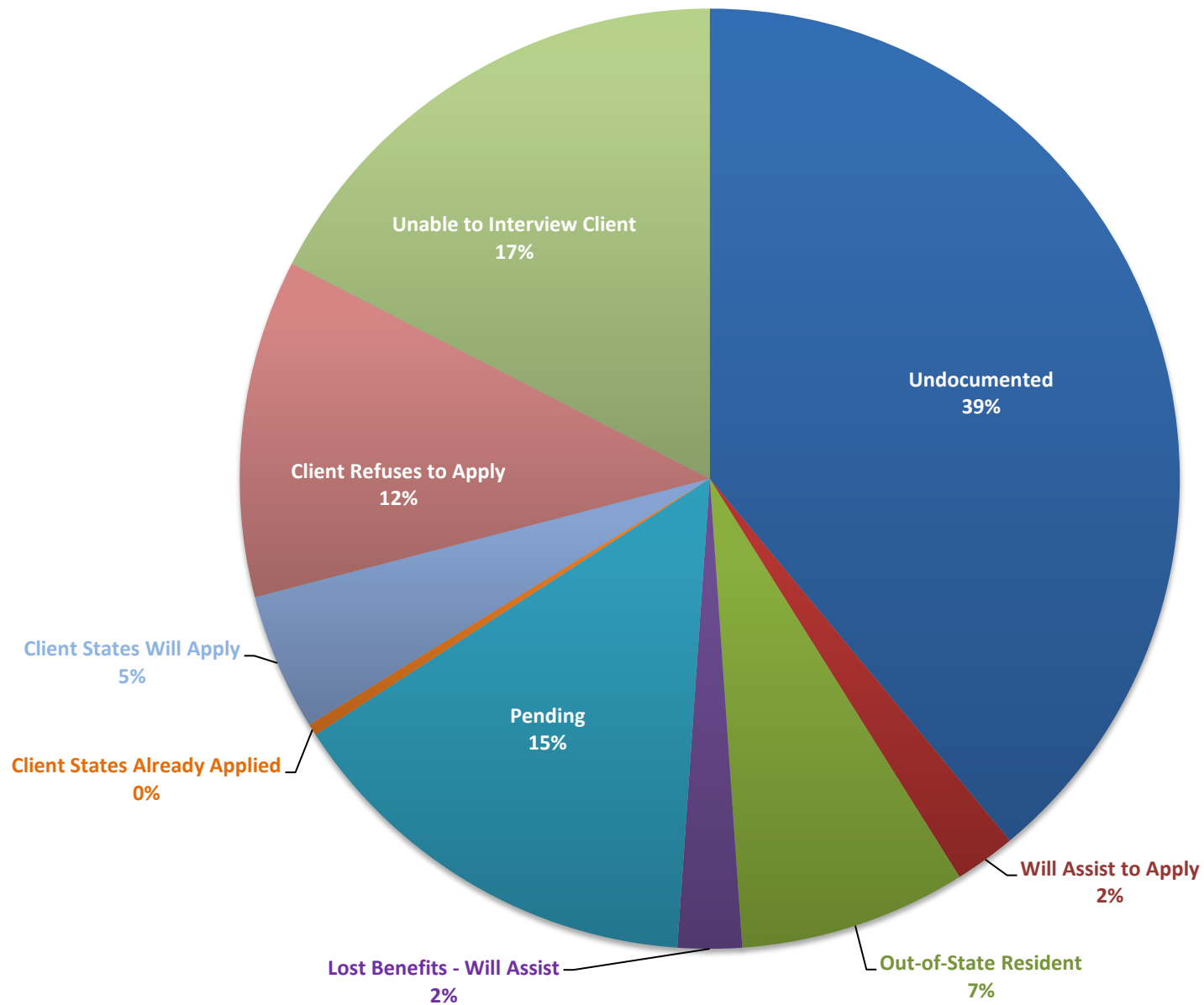
	Medicaid Fee-For-Service	Medicaid-Managed Care	Medicaid-Medicare	Medicare	Private Insurance	Uninsured	Unknown
Jul-18	13%	20%	2%	17%	1%	47%	0%
Aug-18	14%	21%	3%	17%	1%	44%	0%
Sep-18	15%	22%	6%	15%	2%	41%	0%
Oct-18	16%	20%	5%	16%	1%	40%	1%
Nov-18	17%	18%	8%	16%	2%	39%	0%
Dec-18	14%	19%	9%	13%	1%	43%	0%
Jan-19	15%	19%	11%	13%	2%	41%	0%
Feb-19	14%	21%	10%	14%	2%	39%	0%
Mar-19	16%	19%	9%	14%	2%	40%	0%
Apr-19	11%	19%	9%	16%	3%	43%	0%
May-19	11%	20%	9%	14%	6%	40%	0%
Jun-19	11%	21%	7%	13%	6%	41%	0%
Jul-19	11%	23%	7%	14%	2%	43%	0%
Aug-19	14%	18%	7%	15%	2%	44%	0%
Sep-19	17%	19%	9%	17%	1%	36%	0%
Oct-19	16%	24%	11%	13%	3%	33%	0%
Nov-19	13%	21%	9%	13%	5%	39%	0%
Dec-19	10%	18%	7%	13%	7%	45%	0%
Jan-20	10%	14%	10%	16%	6%	44%	0%
Feb-20	10%	14%	14%	16%	3%	44%	0%
Mar-20	11%	22%	10%	11%	3%	42%	0%
Apr-20	11%	19%	9%	12%	2%	47%	0%
May-20							
Jun-20							

Fiscal Year Averages

Fiscal Year	Medicaid Fee-For-Service	Medicaid-Managed Care	Medicaid-Medicare	Medicare	Private Insurance	Uninsured	Unknown
SFY16	14%	8%	7%	15%	3%	52%	1%
SFY17	13%	15%	3%	20%	2%	48%	0%
SFY18	11%	18%	3%	22%	2%	45%	0%
SFY19	14%	20%	7%	15%	2%	42%	0%
SFY20 YTD	12%	19%	9%	14%	3%	42%	0%



Reason Uninsured for Adult Inpatient Clients - Statewide, SFY20 YTD



Uninsured Reason for Adult Inpatient Clients (Monthly Average)

DINI-TOWNSEND (NORTH)

	Undocu- mented	Will Assist to Apply	Out-of- State Resident	Lost Benefits - Will Assist	Pending	Client States Already Applied	Client States Will Apply	Client Refuses to Apply	Unable to Interview Client
Jul-18	27%	7%	40%	0%	13%	0%	0%	13%	0%
Aug-18	17%	24%	14%	3%	14%	0%	0%	7%	21%
Sep-18	19%	13%	44%	6%	19%	0%	0%	0%	0%
Oct-18	19%	4%	35%	14%	19%	0%	0%	4%	4%
Nov-18	37%	0%	26%	0%	15%	0%	0%	22%	0%
Dec-18	23%	5%	32%	5%	36%	0%	0%	0%	0%
Jan-19	33%	8%	23%	8%	31%	0%	0%	0%	0%
Feb-19	17%	0%	42%	0%	42%	0%	0%	0%	0%
Mar-19	8%	0%	64%	0%	28%	0%	0%	0%	0%
Apr-19	38%	0%	19%	10%	33%	0%	0%	0%	0%
May-19	23%	27%	17%	7%	27%	0%	0%	0%	0%
Jun-19	11%	4%	30%	0%	56%	0%	0%	0%	0%
Jul-19	33%	0%	33%	0%	33%	0%	0%	0%	0%
Aug-19	17%	0%	35%	9%	39%	0%	0%	0%	0%
Sep-19	0%	0%	45%	0%	55%	0%	0%	0%	0%
Oct-19	11%	20%	11%	20%	17%	13%	0%	9%	0%
Nov-19	21%	0%	35%	9%	28%	0%	0%	7%	0%
Dec-19	7%	3%	20%	20%	37%	0%	0%	13%	0%
Jan-20	10%	0%	25%	31%	21%	2%	0%	10%	0%
Feb-20	13%	13%	10%	30%	10%	3%	3%	17%	0%
Mar-20	13%	0%	19%	32%	23%	0%	0%	13%	0%
Apr-20	0%	8%	33%	25%	13%	0%	4%	17%	0%
May-20									
Jun-20									

RAWSON-NEAL (SOUTH)

	Undocu- mented	Will Assist to Apply	Out-of- State Resident	Lost Benefits - Will Assist	Pending	Client States Already Applied	Client States Will Apply	Client Refuses to Apply	Unable to Interview Client
Jul-18	10%	0%	5%	0%	17%	0%	35%	8%	24%
Aug-18	12%	0%	8%	0%	22%	0%	31%	7%	20%
Sep-18	15%	4%	4%	1%	21%	1%	25%	13%	16%
Oct-18	19%	9%	6%	0%	13%	0%	22%	15%	17%
Nov-18	19%	14%	2%	0%	14%	0%	26%	11%	12%
Dec-18	16%	8%	2%	0%	15%	0%	31%	13%	16%
Jan-19	9%	13%	5%	0%	19%	1%	30%	12%	12%
Feb-19	10%	13%	6%	0%	20%	2%	31%	12%	6%
Mar-19	9%	7%	8%	0%	15%	2%	29%	14%	16%
Apr-19	20%	2%	8%	0%	14%	2%	27%	15%	12%
May-19	36%	0%	6%	0%	13%	1%	14%	13%	17%
Jun-19	44%	0%	5%	0%	16%	0%	3%	13%	19%
Jul-19	39%	0%	6%	0%	14%	0%	0%	19%	23%
Aug-19	43%	0%	4%	0%	18%	0%	3%	10%	22%
Sep-19	50%	0%	2%	0%	16%	0%	7%	12%	13%
Oct-19	47%	0%	2%	0%	13%	0%	8%	17%	12%
Nov-19	50%	1%	4%	0%	13%	1%	7%	11%	11%
Dec-19	40%	0%	11%	0%	13%	0%	3%	18%	16%
Jan-20	38%	2%	18%	0%	16%	0%	6%	11%	9%
Feb-20	44%	1%	10%	1%	15%	0%	3%	7%	18%
Mar-20	49%	9%	1%	1%	11%	0%	5%	12%	13%
Apr-20	25%	3%	0%	0%	4%	0%	9%	4%	55%
May-20									
Jun-20									

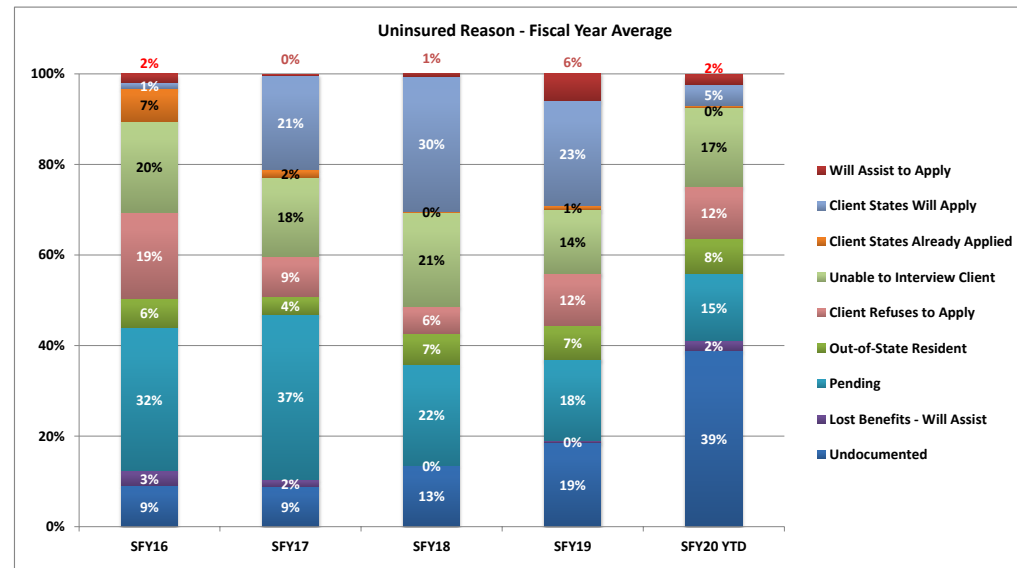
Uninsured Reason for Adult Inpatient Clients - Statewide

STATEWIDE

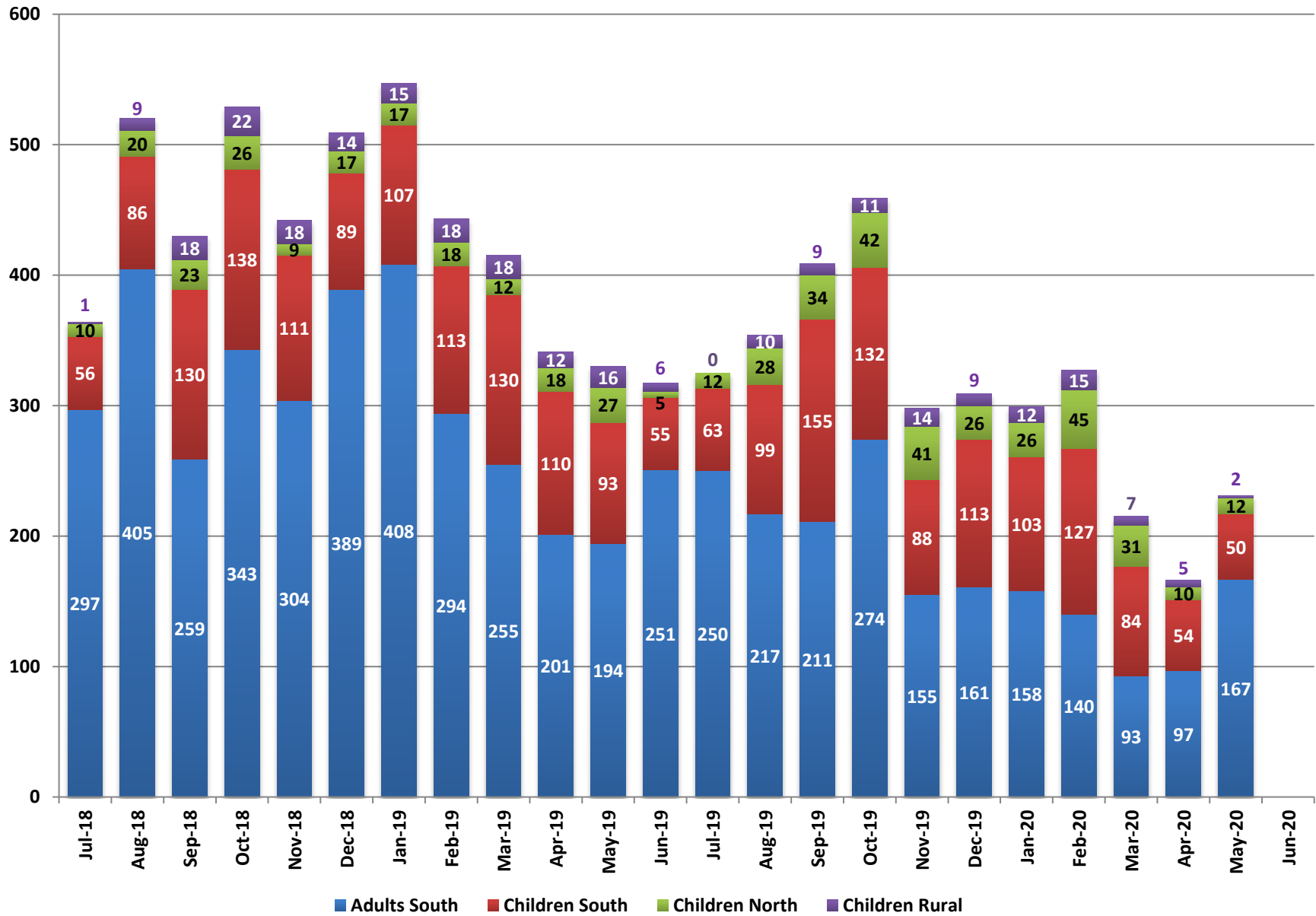
	Undocu- mented	Will Assist to Apply	Out-of- State Resident	Lost Benefits - Will Assist	Pending	Client States Already Applied	Client States Will Apply	Client Refuses to Apply	Unable to Interview Client
Jul-18	11%	0%	7%	0%	16%	0%	34%	9%	23%
Aug-18	12%	2%	8%	0%	22%	0%	29%	7%	20%
Sep-18	15%	5%	7%	1%	21%	1%	23%	12%	15%
Oct-18	19%	13%	7%	2%	15%	1%	19%	15%	9%
Nov-18	21%	13%	4%	0%	14%	0%	24%	12%	11%
Dec-18	16%	8%	4%	0%	16%	0%	28%	12%	15%
Jan-19	13%	12%	7%	0%	21%	1%	26%	10%	11%
Feb-19	11%	12%	9%	0%	22%	2%	28%	11%	6%
Mar-19	9%	6%	12%	0%	16%	2%	27%	13%	15%
Apr-19	21%	2%	9%	1%	16%	1%	25%	14%	11%
May-19	35%	3%	7%	1%	15%	1%	12%	12%	16%
Jun-19	41%	0%	8%	0%	20%	0%	3%	12%	17%
Jul-19	38%	0%	7%	0%	15%	0%	0%	18%	21%
Aug-19	41%	0%	6%	0%	19%	0%	3%	9%	20%
Sep-19	45%	0%	6%	0%	20%	0%	7%	10%	12%
Oct-19	40%	4%	4%	4%	14%	3%	7%	15%	10%
Nov-19	46%	1%	8%	1%	15%	1%	6%	11%	10%
Dec-19	36%	0%	12%	2%	15%	0%	3%	17%	15%
Jan-20	35%	2%	19%	4%	17%	0%	6%	11%	8%
Feb-20	41%	3%	10%	4%	14%	0%	3%	8%	16%
Mar-20	44%	8%	3%	5%	13%	0%	4%	12%	11%
Apr-20	23%	3%	3%	2%	5%	0%	8%	5%	51%
May-20									
Jun-20									

Fiscal Year Averages

	Undocu- mented	Will Assist to Apply	Out-of- State Resident	Lost Benefits - Will Assist	Pending	Client States Already Applied	Client States Will Apply	Client Refuses to Apply	Unable to Interview Client
SFY16	9%	2%	6%	3%	32%	7%	1%	19%	20%
SFY17	9%	0%	4%	2%	37%	2%	21%	9%	18%
SFY18	13%	1%	7%	0%	22%	0%	30%	6%	21%
SFY19	19%	6%	7%	0%	18%	1%	23%	12%	14%
SFY20 YTD	39%	2%	8%	2%	15%	0%	5%	12%	17%



Mobile Crisis - Total Clients Served



Mobile Crisis - Children Clients Served

	Children South					
	Total Calls	Clients Served (Team Responded)	Hospitalization	Hospital Diversion	Stabilization Recommended	Hospital Diversion Rate
Jul-18	122	56	12	44	23	79%
Aug-18	142	86	12	74	49	86%
Sep-18	249	130	11	119	64	92%
Oct-18	215	138	22	116	64	84%
Nov-18	192	111	24	87	46	78%
Dec-18	119	89	3	86	55	97%
Jan-19	165	107	10	97	65	91%
Feb-19	218	113	7	106	54	94%
Mar-19	210	130	15	115	58	88%
Apr-19	235	110	14	96	56	87%
May-19	199	93	18	75	42	81%
Jun-19	129	55	7	48	19	87%
Jul-19	152	63	15	48	18	76%
Aug-19	226	99	13	86	32	87%
Sep-19	229	155	19	136	39	88%
Oct-19	266	132	10	122	38	92%
Nov-19	217	88	12	76	29	86%
Dec-19	234	113	7	106	35	94%
Jan-20	234	103	11	92	36	89%
Feb-20	237	127	13	114	39	90%
Mar-20	212	84	10	74	18	88%
Apr-20	124	54	11	43	21	80%
May-20	130	50	10	40	9	80%
Jun-20						

	Children Rural					
	Total Calls	Clients Served (Team Responded)	Hospitalization	Hospital Diversion	Stabilization Recommended	Hospital Diversion Rate
Jul-18	7	1	0	1	0	100%
Aug-18	11	9	2	7	2	78%
Sep-18	26	18	2	16	4	89%
Oct-18	34	22	3	19	7	86%
Nov-18	21	18	2	16	5	89%
Dec-18	18	14	3	11	7	79%
Jan-19	20	15	6	9	8	60%
Feb-19	26	18	6	11	7	61%
Mar-19	33	18	4	14	9	78%
Apr-19	26	12	3	9	8	75%
May-19	26	16	2	14	9	88%
Jun-19	8	6	2	4	2	67%
Jul-19	2	0	n/a	n/a	n/a	n/a
Aug-19	12	10	1	9	5	90%
Sep-19	15	9	1	8	5	89%
Oct-19	18	11	3	8	7	73%
Nov-19	21	14	4	10	11	71%
Dec-19	14	9	1	8	7	89%
Jan-20	18	12	3	9	6	75%
Feb-20	23	15	2	13	5	87%
Mar-20	15	7	0	7	3	100%
Apr-20	6	5	2	3	3	60%
May-20	5	2	1	1	0	50%
Jun-20						

	Children North					
	Total Calls	Clients Served (Team Responded)	Hospitalization	Hospital Diversion	Stabilization Recommended	Hospital Diversion Rate
Jul-18	30	10	3	7	5	70%
Aug-18	53	20	1	19	14	95%
Sep-18	63	23	3	20	11	87%
Oct-18	63	26	6	20	17	77%
Nov-18	47	9	5	4	46	44%
Dec-18	51	17	1	16	13	94%
Jan-19	49	17	1	16	14	94%
Feb-19	46	18	6	12	11	67%
Mar-19	44	12	1	11	8	92%
Apr-19	41	18	3	15	8	83%
May-19	58	27	5	22	15	81%
Jun-19	12	5	0	5	4	100%
Jul-19	24	12	3	9	4	75%
Aug-19	39	28	1	27	10	96%
Sep-19	59	34	5	29	17	85%
Oct-19	59	42	14	28	17	67%
Nov-19	55	41	9	32	15	78%
Dec-19	44	26	3	23	11	88%
Jan-20	47	26	0	26	10	100%
Feb-20	80	45	7	38	19	84%
Mar-20	54	31	6	25	13	81%
Apr-20	30	10	0	10	8	100%
May-20	31	12	7	5	4	42%
Jun-20						

Mobile Crisis - Adults and Total Clients Served

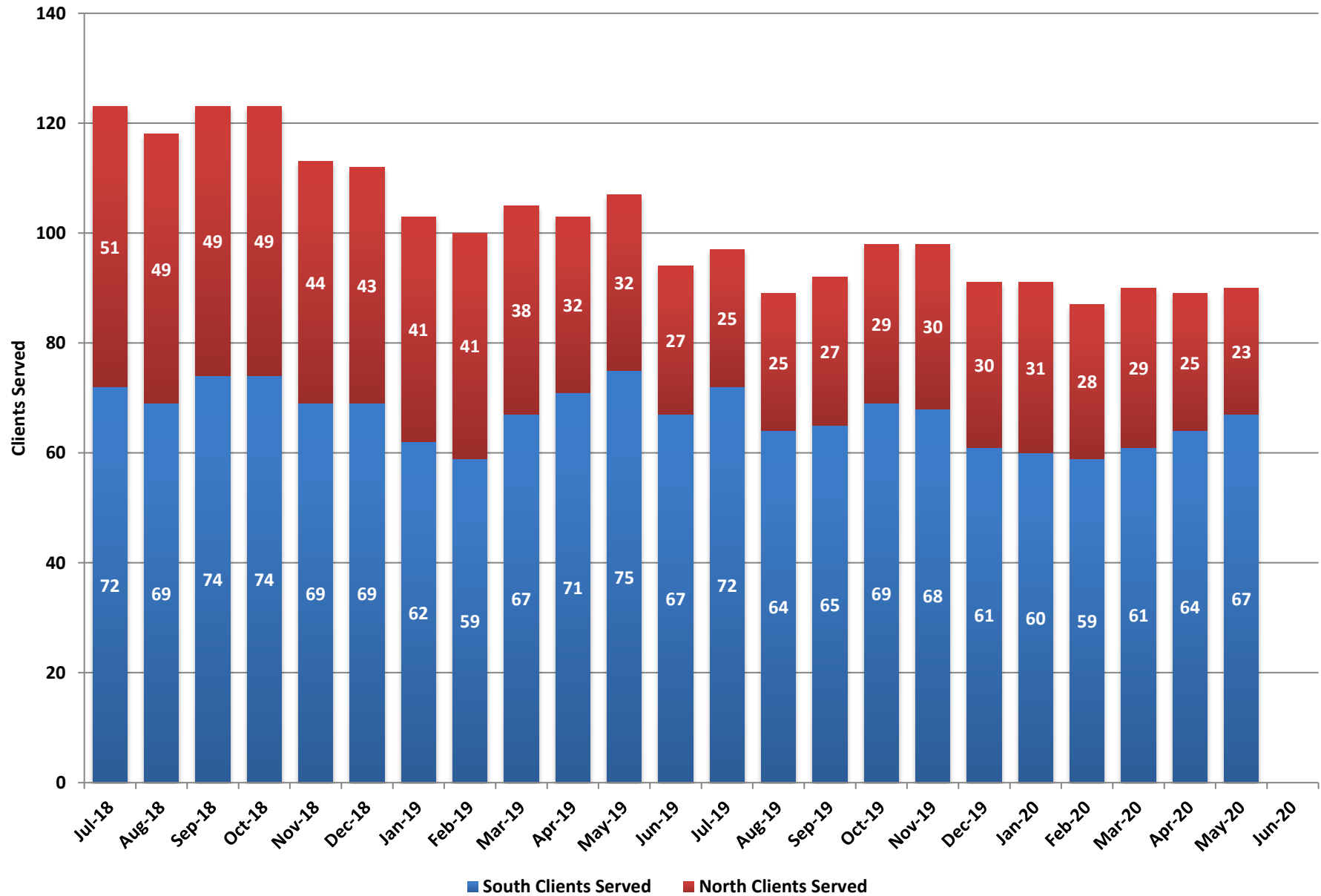
Adults South				
	Clients Served	Hospitalization	Hospital Diversion	Hospital Diversion Rate
Jul-18	297	90	207	70%
Aug-18	405	135	270	67%
Sep-18	259	83	176	68%
Oct-18	343	102	241	70%
Nov-18	304	101	203	67%
Dec-18	389	116	273	70%
Jan-19	408	137	271	66%
Feb-19	294	97	197	67%
Mar-19	255	71	184	72%
Apr-19	201	43	158	79%
May-19	194	24	170	88%
Jun-19	251	73	178	71%
Jul-19	250	94	156	62%
Aug-19	217	94	123	57%
Sep-19	211	92	119	56%
Oct-19	274	90	184	67%
Nov-19	155	62	93	60%
Dec-19	161	58	109	68%
Jan-20	158	56	102	65%
Feb-20	140	40	100	71%
Mar-20	93	36	57	61%
Apr-20	97	56	41	42%
May-20	167	111	56	34%
Jun-20				

Total Clients Served					
	Adults South	Children South	Children North	Children Rural	Total
Jul-18	297	56	10	1	364
Aug-18	405	86	20	9	520
Sep-18	259	130	23	18	430
Oct-18	343	138	26	22	529
Nov-18	304	111	9	18	442
Dec-18	389	89	17	14	509
Jan-19	408	107	17	15	547
Feb-19	294	113	18	18	443
Mar-19	255	130	12	18	415
Apr-19	201	110	18	12	341
May-19	194	93	27	16	330
Jun-19	251	55	5	6	317
Jul-19	250	63	12	0	325
Aug-19	217	99	28	10	354
Sep-19	211	155	34	9	409
Oct-19	274	132	42	11	459
Nov-19	155	88	41	14	298
Dec-19	161	113	26	9	309
Jan-20	158	103	26	12	299
Feb-20	140	127	45	15	327
Mar-20	93	84	31	7	215
Apr-20	97	54	10	5	166
May-20	167	50	12	2	231
Jun-20					

Fiscal Year Totals

Fiscal Year	Adults South		Children South		Children North		Children Rural		Total	
	Clients Served	Hospital Diversion Rate	Clients Served	Hospital Diversion Rate	Clients Served	Hospital Diversion Rate	Clients Served	Hospital Diversion Rate	Clients Served	Hospital Diversion Rate
SFY14	1,772	42%	473	88%	127	81%			2,372	53%
SFY15	1,255	65%	750	87%	224	78%			2,229	74%
SFY16	1,971	70%	1,086	89%	316	81%	109	84%	3,482	77%
SFY18	3,254	68%	1,127	84%	279	86%	214	86%	4,874	74%
SFY19	3,600	70%	1,218	87%	202	83%	167	78%	5,187	75%
SFY20 YTD	1,923	59%	1,068	88%	307	82%	94	81%	3,392	71%

Adult Assisted Outpatient Treatment (AOT)



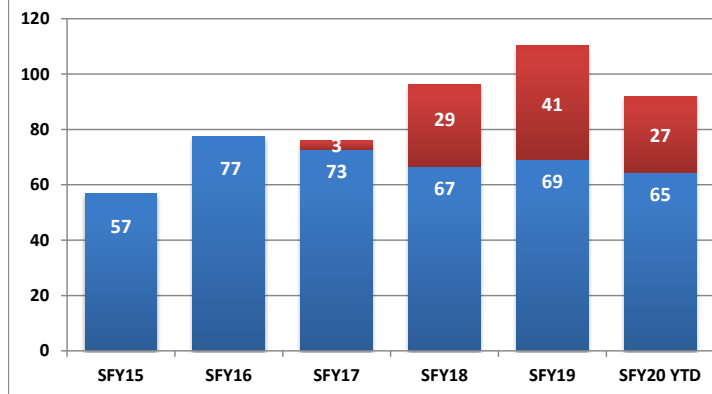
Adult Assisted Outpatient Treatment (AOT)

	South Clients Served	North Clients Served
Jul-18	72	51
Aug-18	69	49
Sep-18	74	49
Oct-18	74	49
Nov-18	69	44
Dec-18	69	43
Jan-19	62	41
Feb-19	59	41
Mar-19	67	38
Apr-19	71	32
May-19	75	32
Jun-19	67	27
Jul-19	72	25
Aug-19	64	25
Sep-19	65	27
Oct-19	69	29
Nov-19	68	30
Dec-19	61	30
Jan-20	60	31
Feb-20	59	28
Mar-20	61	29
Apr-20	64	25
May-20	67	23
Jun-20		

AOT Clients by Status

	Referrals	Petitions	Court Orders	Re-petitions	Denied by AOT	Denied by Court	Terminated by Court	Graduated
Jul-18	23	12	16	7	5	0	0	0
Aug-18	28	5	12	16	10	0	4	1
Sep-18	24	9	9	7	9	0	7	10
Oct-18	16	7	11	7	6	0	5	22
Nov-18	10	7	16	11	9	0	6	18
Dec-18	17	5	16	15	2	1	9	1
Jan-19	23	9	14	7	4	0	16	16
Feb-19	22	14	12	5	3	0	1	5
Mar-19	25	15	17	10	3	0	10	1
Apr-19	15	5	11	3	4	0	4	3
May-19	13	4	14	12	5	1	2	1
Jun-19	19	8	7	3	7	0	8	7
Jul-19	22	11	17	5	2	0	8	7
Aug-19	25	4	6	13	12	0	6	9
Sep-19	25	14	16	16	6	0	4	5
Oct-19	26	11	18	6	11	0	2	6
Nov-19	17	10	13	5	4	0	13	4
Dec-19	17	6	11	8	3	0	9	2
Jan-20	25	8	11	10	18	0	8	9
Feb-20	23	4	10	8	6	1	6	1
Mar-20	27	6	12	16	3	0	10	9
Apr-20	23	8	10	9	1	0	3	1
May-20	11	2	14	14	0	0	3	1
Jun-20								

AOT Clients Served - Fiscal Year Average



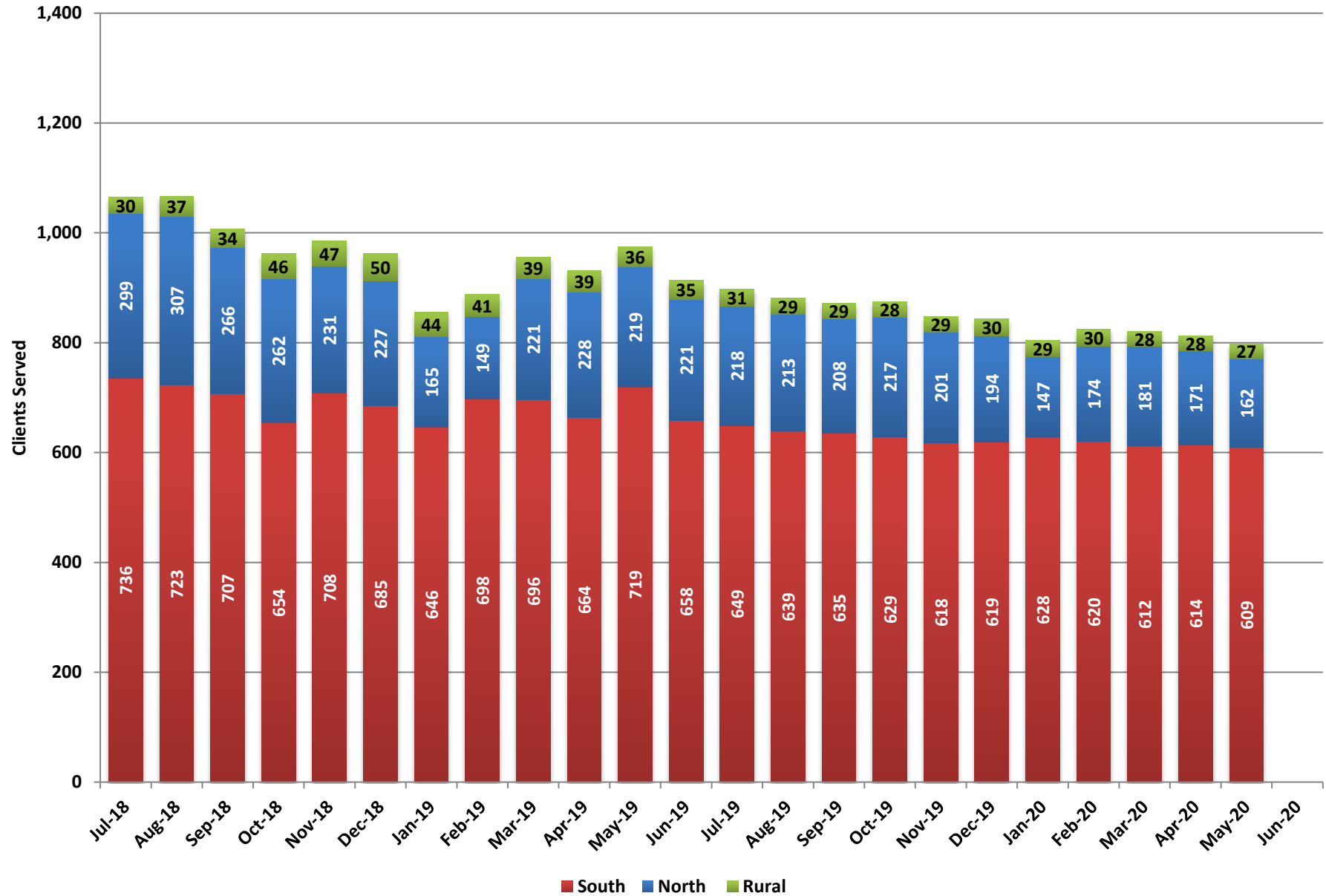
Fiscal Year Averages

Fiscal Year	South Clients Served	North Clients Served
SFY15	57	
SFY16	77	
SFY17	73	3
SFY18	67	29
SFY19	69	41
SFY20 YTD	65	27

Note: Budgeted caseload is 75 clients.

Note: Northern Region program originated in July 2016, however did not take/accept its first clients until January of 2017.

Adult Housing Support by Region



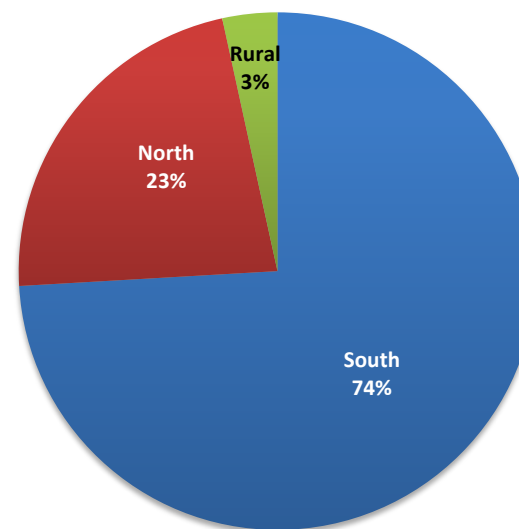
Adult Housing Support by Region

	South	North	Rural	Total Served
Jul-18	736	299	30	1,065
Aug-18	723	307	37	1,067
Sep-18	707	266	34	1,007
Oct-18	654	262	46	962
Nov-18	708	231	47	986
Dec-18	685	227	50	962
Jan-19	646	165	44	855
Feb-19	698	149	41	888
Mar-19	696	221	39	956
Apr-19	664	228	39	931
May-19	719	219	36	974
Jun-19	658	221	35	914
Jul-19	649	218	31	898
Aug-19	639	213	29	881
Sep-19	635	208	29	872
Oct-19	629	217	28	874
Nov-19	618	201	29	848
Dec-19	619	194	30	843
Jan-20	628	147	29	804
Feb-20	620	174	30	824
Mar-20	612	181	28	821
Apr-20	614	171	28	813
May-20	609	162	27	798
Jun-20				

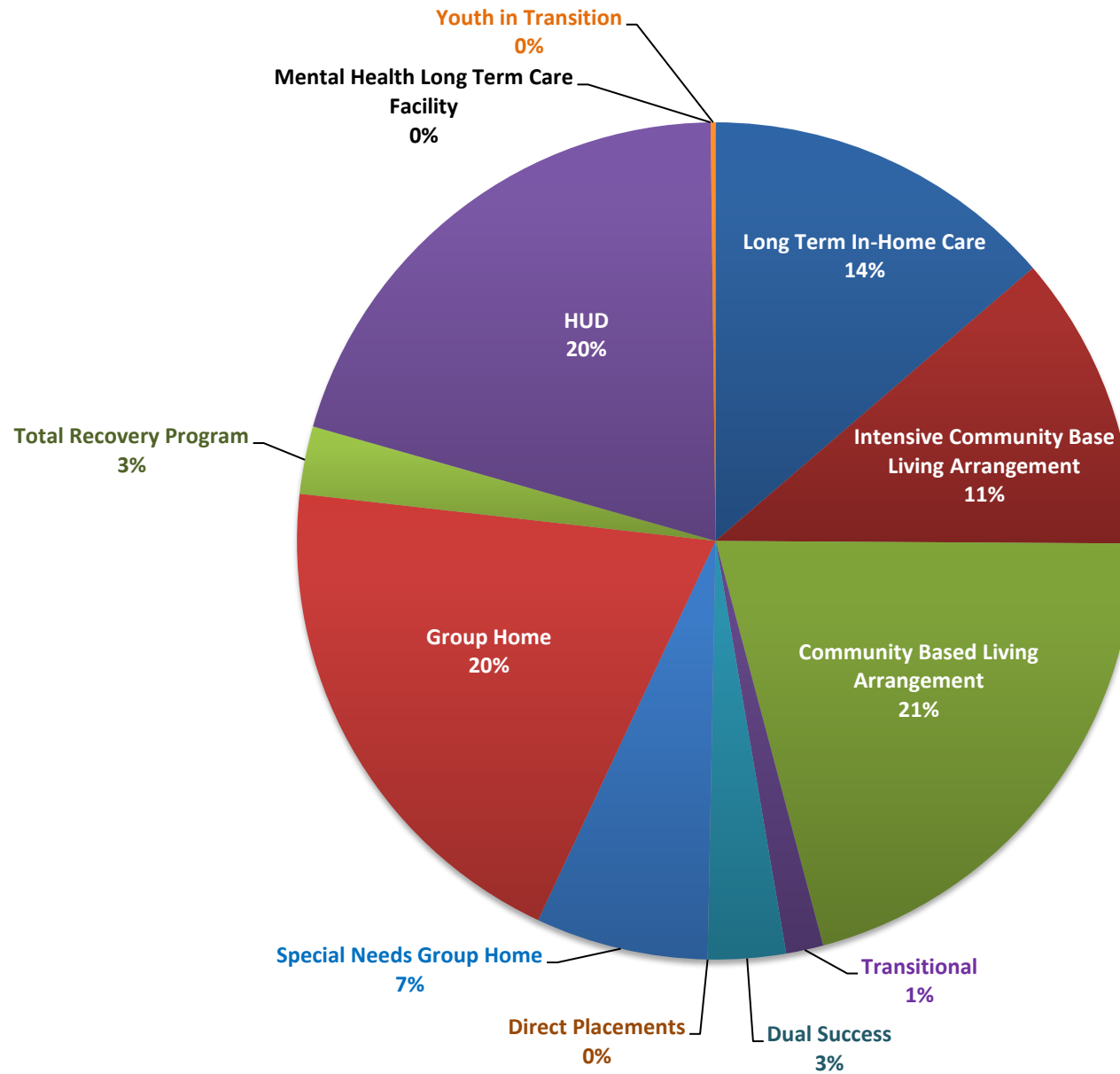
Fiscal Year Averages

Fiscal Year	South	North	Rural	Medicaid Fee-For-Service
SFY16	876	372	66	1,309
SFY17	721	357	46	1,125
SFY18	776	281	41	1,098
SFY19	691	233	40	964
SFY20 YTD	625	190	29	843

Percent by Region - SFY20 YTD



Adult Housing Support by Type - Statewide, SFY20 YTD



Adult Housing Support by Type

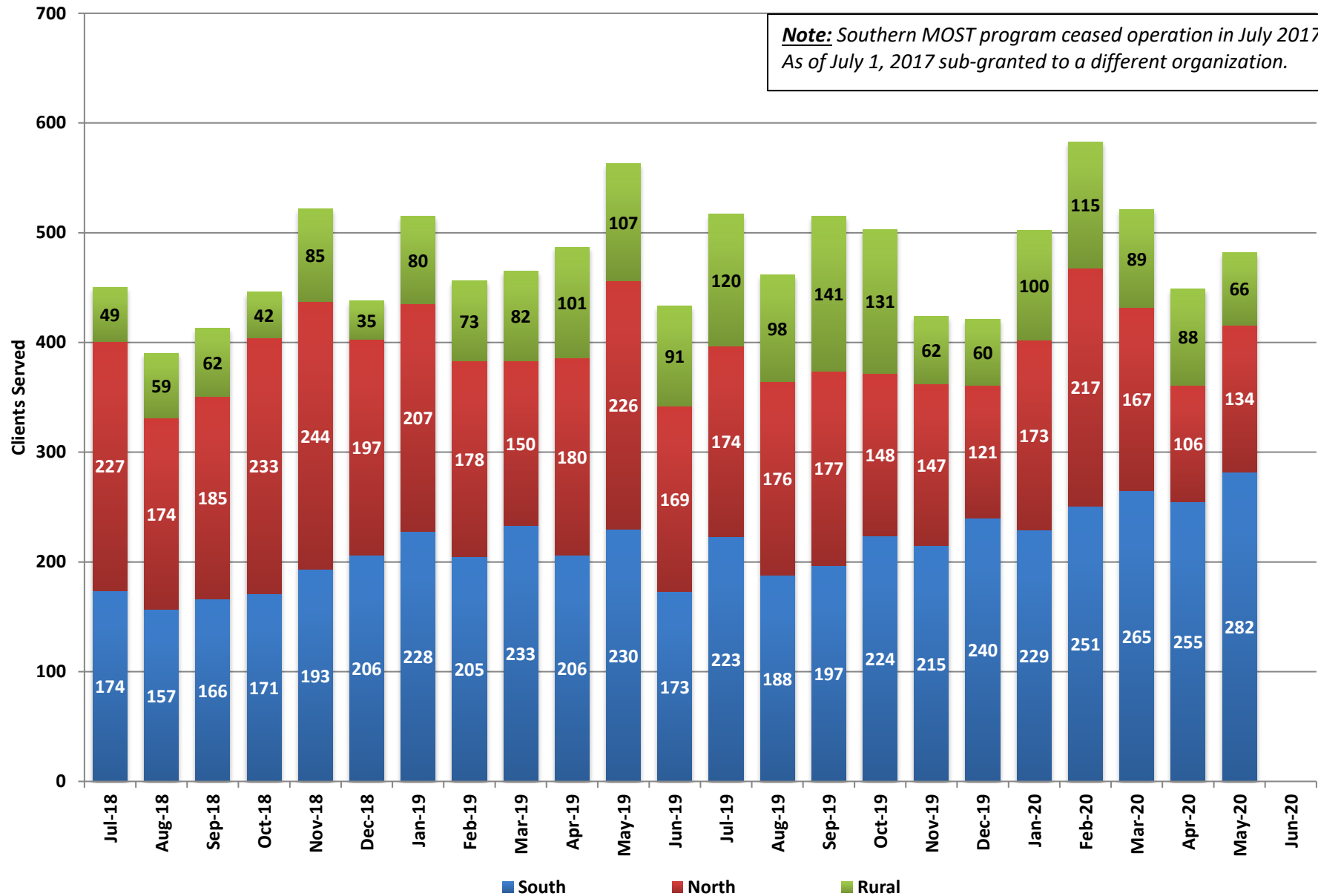
Statewide	Long Term In-Home Care	Intensive Community Base Living Arrangement	Community Based Living Arrangement	Transitional	Dual Success	Direct Placements	Special Needs Group Home	Group Home	Total Recovery Program	HUD	Mental Health Long Term Care Facility	Youth in Transition
Jul-18	113	90	331	8	26	0	42	190	27	206	0	8
Aug-18	107	89	331	9	26	0	41	190	27	206	0	8
Sep-18	108	86	299	6	26	0	38	184	23	201	0	4
Oct-18	100	94	240	9	51	0	50	164	20	198	0	4
Nov-18	102	119	177	12	18	0	62	151	14	175	0	4
Dec-18	98	110	170	12	14	0	61	151	14	174	0	4
Jan-19	99	108	163	11	15	0	60	151	14	171	0	4
Feb-19	101	107	155	15	17	0	60	153	25	172	0	5
Mar-19	100	106	163	15	17	0	60	155	25	174	0	3
Apr-19	95	104	163	13	15	0	56	152	22	166	0	3
May-19	103	112	168	16	16	0	61	159	22	176	0	3
Jun-19	95	97	167	17	19	0	52	151	19	160	0	3
Jul-19	95	92	162	11	20	0	34	152	19	160	0	3
Aug-19	95	89	160	11	17	0	51	147	19	160	0	3
Sep-19	95	89	155	9	20	0	50	145	24	154	0	2
Oct-19	99	88	159	11	17	0	49	145	23	150	0	3
Nov-19	98	84	151	10	18	0	49	142	19	148	0	2
Dec-19	98	84	149	12	20	0	49	141	19	143	0	1
Jan-20	101	77	158	12	22	0	50	141	22	144	0	1
Feb-20	101	77	134	9	25	0	49	140	21	140	0	0
Mar-20	99	75	144	10	24	0	49	140	17	139	0	0
Apr-20	101	74	140	13	26	0	49	140	12	140	0	0
May-20	103	74	133	6	29	0	49	138	12	138	0	0
Jun-20												

Fiscal Year Averages

Fiscal Year Statewide	Long Term In-Home Care	Intensive Community Base Living Arrangement	Community Based Living Arrangement	Transitional	Dual Success	Direct Placements	Special Needs Group Home	Group Home	Total Recovery Program	HUD	Mental Health Long Term Care Facility	Youth in Transition
SFY16	22	13	547	23	30	32	49	281	18	283	0	12
SFY17	35	36	468	14	27	20	39	228	23	218	0	11
SFY18	104	74	352	13	26	2	48	209	22	197	0	18
SFY19	102	102	211	12	22	0	54	163	21	182	0	4
SFY20 YTD	99	82	150	10	22	0	48	143	19	147	0	1

Mobile Outreach Safety Team (MOST) - Clients Served

Note: Southern MOST program ceased operation in July 2017. As of July 1, 2017 sub-granted to a different organization.



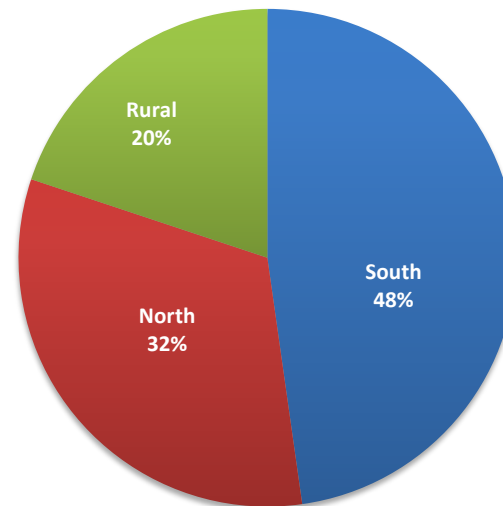
Mobile Outreach Safety Team (MOST) - Clients Served

	South	North	Rural	Total
Jul-18	174	227	49	450
Aug-18	157	174	59	390
Sep-18	166	185	62	413
Oct-18	171	233	42	446
Nov-18	193	244	85	522
Dec-18	206	197	35	438
Jan-19	228	207	80	515
Feb-19	205	178	73	456
Mar-19	233	150	82	465
Apr-19	206	180	101	487
May-19	230	226	107	563
Jun-19	173	169	91	433
Jul-19	223	174	120	517
Aug-19	188	176	98	462
Sep-19	197	177	141	515
Oct-19	224	148	131	503
Nov-19	215	147	62	424
Dec-19	240	121	60	421
Jan-20	229	173	100	502
Feb-20	251	217	115	583
Mar-20	265	167	89	521
Apr-20	255	106	88	449
May-20	282	134	66	482
Jun-20				

Fiscal Year Averages

Fiscal Year	South	North	Rural	Medicaid Fee-For-Service
SFY16	32	145	16	193
SFY17	16	139	28	183
SFY18	21	152	61	220
SFY19	195	198	72	465
SFY20 YTD	234	158	97	489

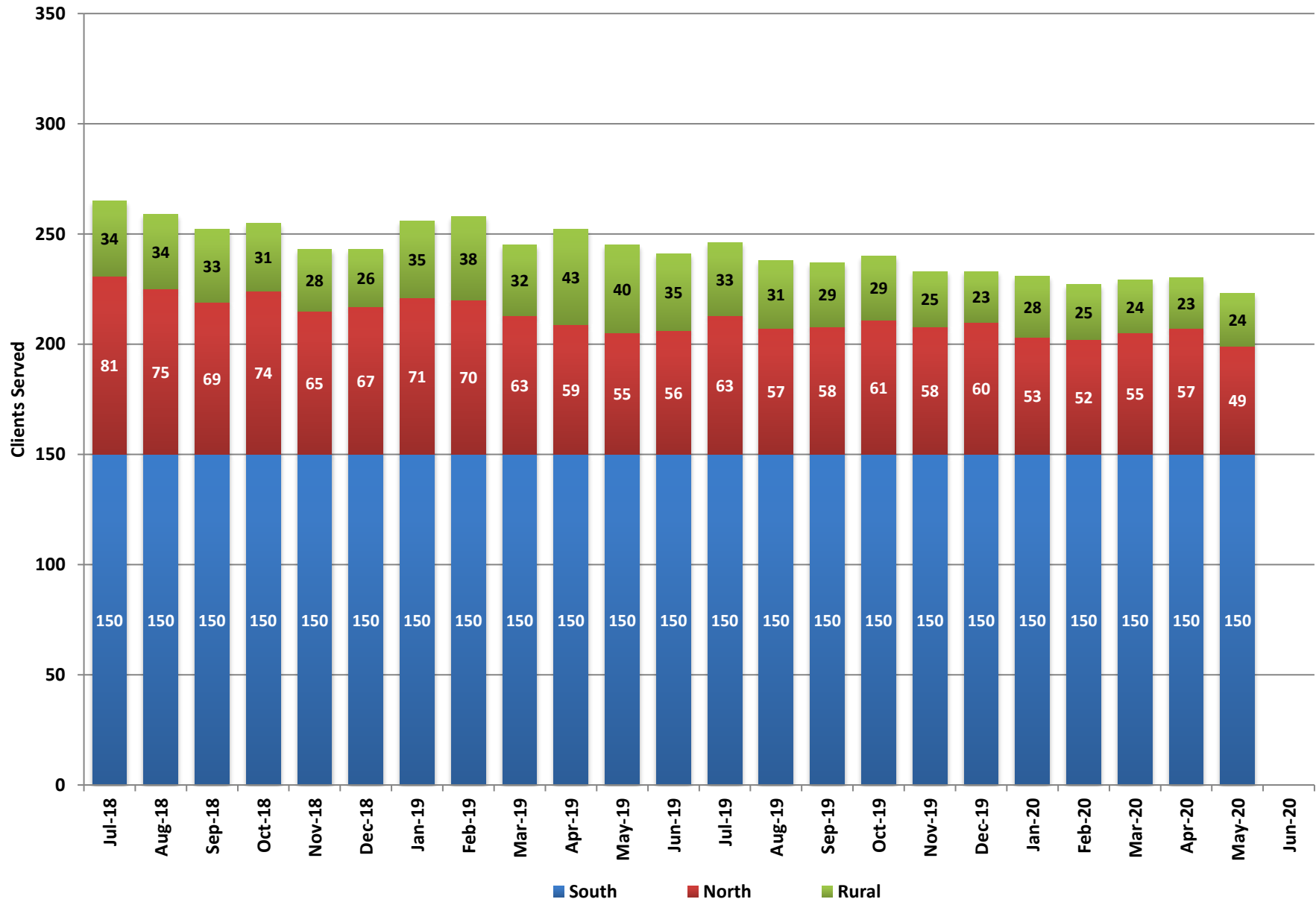
MOST Clients Served - SFY20 YTD



Note: Beginning in September 2015, the data for the Rural region now includes Lyon County in addition to Carson City.

Note: Southern MOST program ceased operation in July 2017 - as of July 1, 2017 sub-granted to a different organization.

Adult Mental Health Court



Adult Mental Health Court

	South				North				Rural				Statewide			
	Housing and Case Management	Served by Mojave	Case Management Only	Total	Housing and Case Management	Served by Mojave	Case Management Only	Total	Housing and Case Management	Served by Mojave	Case Management Only	Total	Housing and Case Management	Served by Mojave	Case Management Only	Total Clients Served
Jul-18	65	75	10	150	30	0	51	81	0		34	34	95	75	95	265
Aug-18	62	75	13	150	18	0	57	75	0		34	34	80	75	104	259
Sep-18	62	75	13	150	11	0	58	69	0		33	33	73	75	104	252
Oct-18	58	75	17	150	10	0	64	74	0		31	31	68	75	112	255
Nov-18	61	75	14	150	9	0	56	65	0		28	28	70	75	98	243
Dec-18	61	75	14	150	8	0	59	67	0		26	26	69	75	99	243
Jan-19	63	75	12	150	9	0	62	71	5		30	35	77	75	104	256
Feb-19	63	75	12	150	8	0	62	70	5		33	38	76	75	107	258
Mar-19	63	75	12	150	5	0	58	63	3		29	32	71	75	99	245
Apr-19	54	75	21	150	3	0	56	59	3		40	43	60	75	117	252
May-19	57	75	18	150	3	0	52	55	3		37	40	63	75	107	245
Jun-19	46	75	29	150	3	0	53	56	0		35	35	49	75	117	241
Jul-19	58	75	17	150	3	0	60	63	0		33	33	61	75	110	246
Aug-19	60	75	15	150	7	0	50	57	0		31	31	67	75	96	238
Sep-19	57	75	18	150	6	0	52	58	0		29	29	63	75	99	237
Oct-19	68	75	7	150	4	0	57	61	0		29	29	72	75	93	240
Nov-19	69	75	6	150	4	0	54	58	0		25	25	73	75	85	233
Dec-19	57	75	18	150	1	0	59	60	0		23	23	58	75	100	233
Jan-20	59	75	16	150	0	0	53	53	0		28	28	59	75	97	231
Feb-20	57	75	18	150	0	0	52	52	0		25	25	57	75	95	227
Mar-20	56	75	19	150	0	0	55	55	0		24	24	56	75	98	229
Apr-20	59	75	16	150	0	0	57	57	0		23	23	59	75	96	230
May-20	61	75	14	150	0	0	49	49	0		24	24	61	75	87	223
Jun-20																

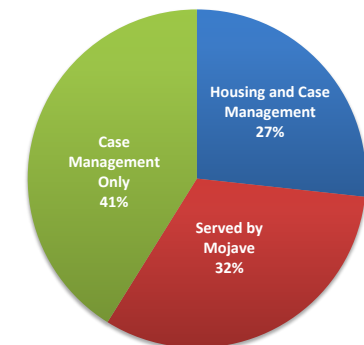
Fiscal Year Averages

	South				North				Rural				Statewide			
Fiscal Year	Housing and Case Management	Served by Mojave	Case Management Only	Total	Housing and Case Management	Served by Mojave	Case Management Only	Total	Housing and Case Management	Served by Mojave	Case Management Only	Total	Housing and Case Management	Served by Mojave	Case Management Only	Total Clients Served
SFY16	49	17	18	84	75	0	90	165	22		0	22	147	18	108	276
SFY17	60	90	11	160	69	0	54	123	30		0	30	158	90	65	313
SFY18	62	74	13	149	45	0	44	89	13		14	28	120	74	71	265
SFY19	60	75	15	150	10	0	57	67	2		33	34	71	75	105	251
SFY20 YTD	60	75	15	150	2	0	54	57	0		27	27	62	75	96	233

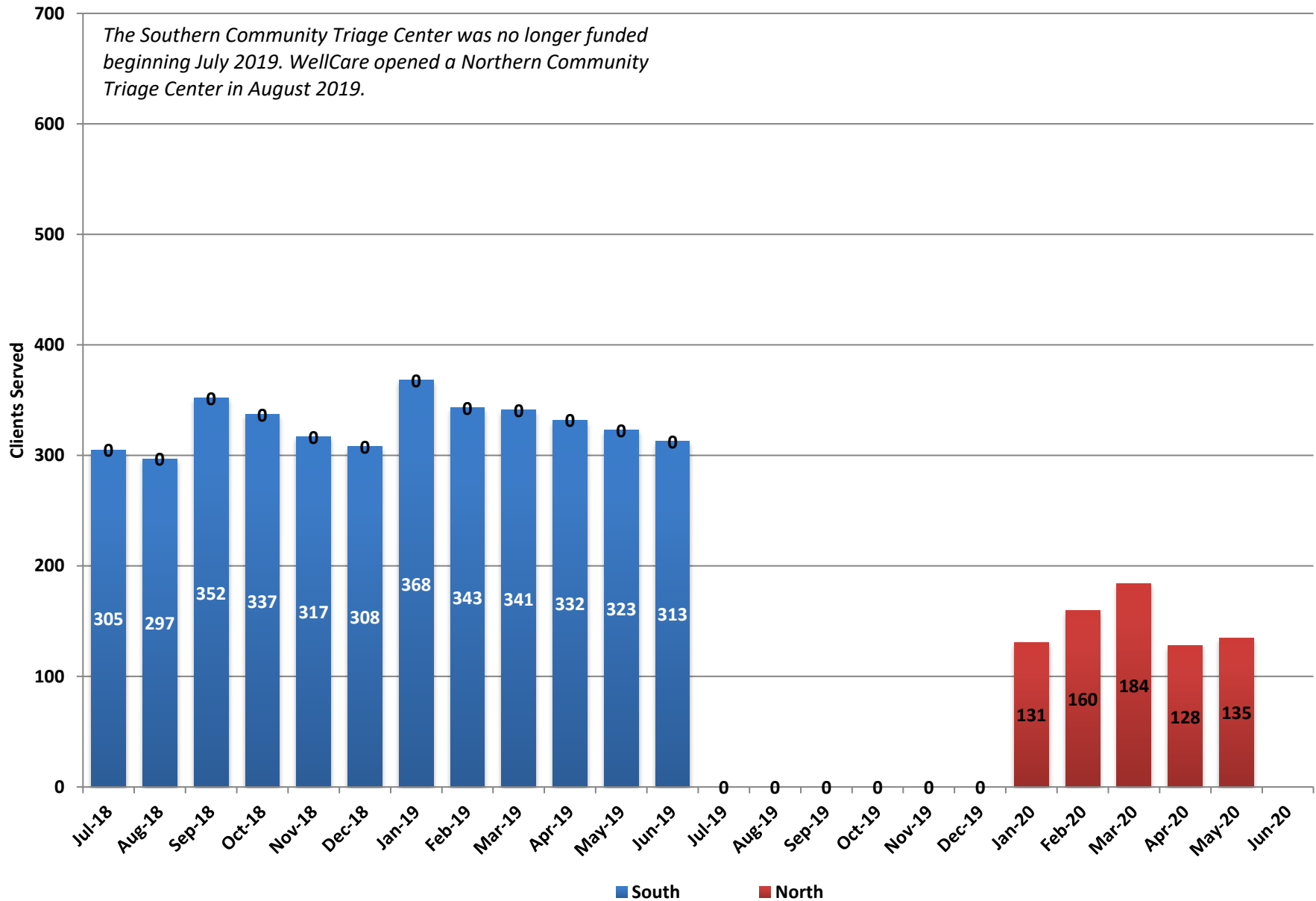
* FY16&17 The Supreme Courts funded the Specialty Courts to increase the Mental Health Court caseload to 125.

Mojave is directly contracted with the Specialty Courts so their caseload will increase from 25 to 125.

Statewide by Type of Service - SFY20 YTD



Adult Community Triage Centers



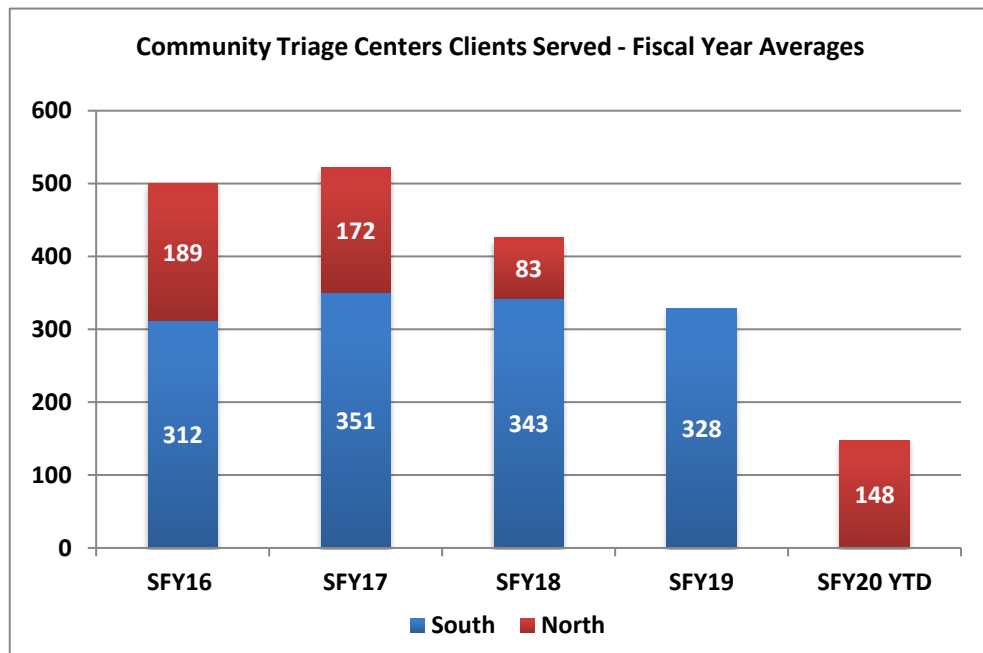
Adult Community Triage Centers

Clients Served (Unduplicated)

	South	North	Total
Jul-18	305		305
Aug-18	297		297
Sep-18	352		352
Oct-18	337		337
Nov-18	317		317
Dec-18	308		308
Jan-19	368		368
Feb-19	343		343
Mar-19	341		341
Apr-19	332		332
May-19	323		323
Jun-19	313		313
Jul-19			
Aug-19			
Sep-19			
Oct-19			
Nov-19			
Dec-19			
Jan-20		131	131
Feb-20		160	160
Mar-20		184	184
Apr-20		128	128
May-20		135	135
Jun-20			

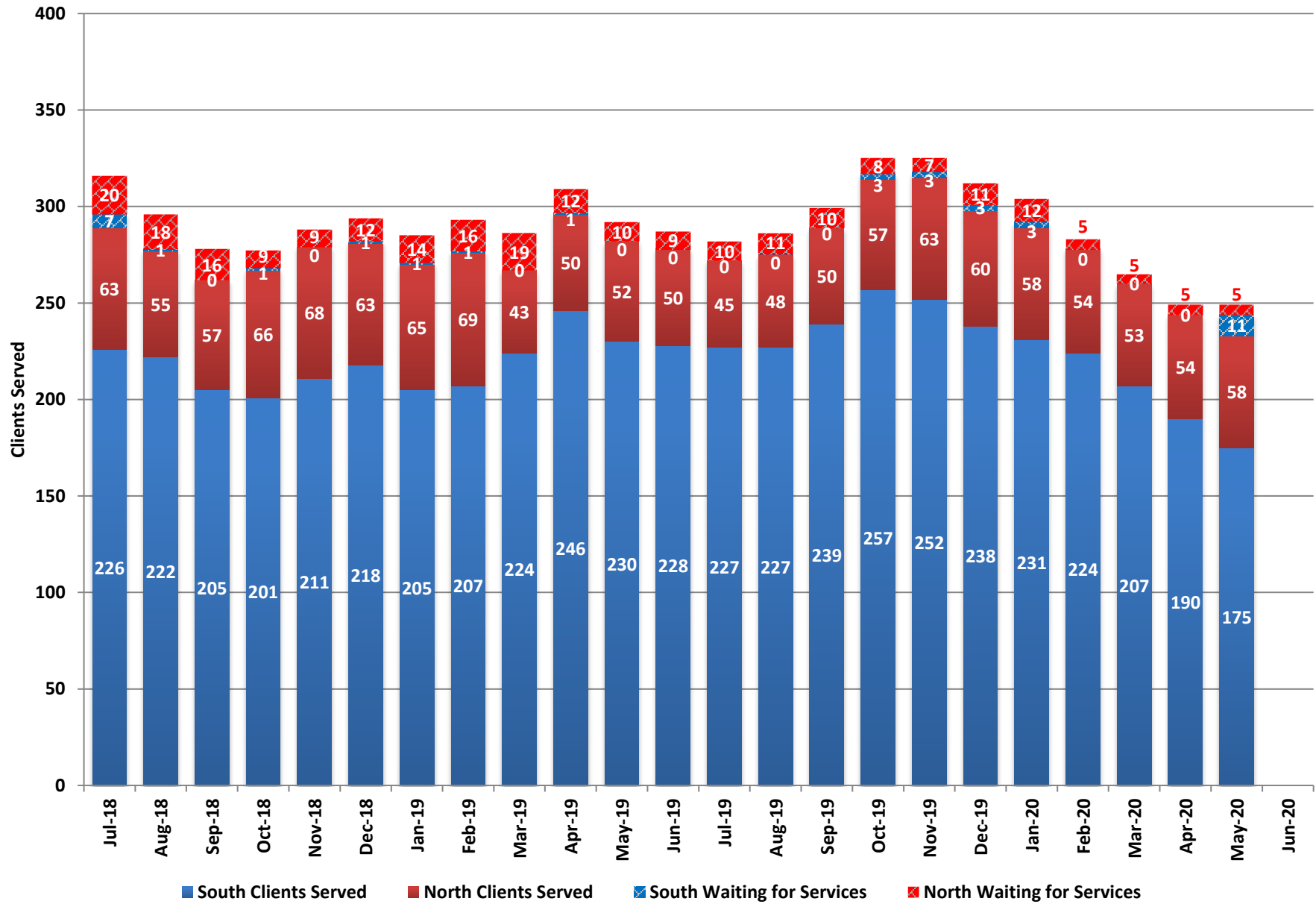
Fiscal Year Averages

	South	North	Total
SFY16	312	189	501
SFY17	351	172	523
SFY18	343	83	425
SFY19	328		328
SFY20 YTD		148	148



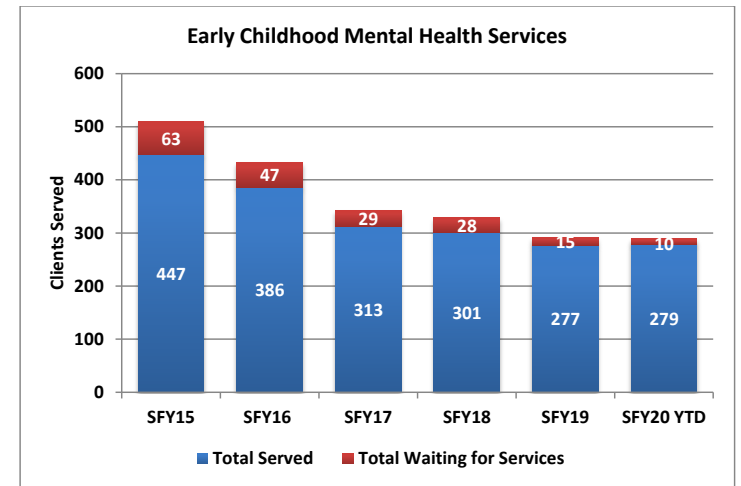
Note: The Southern Community Triage Center was no longer funded beginning July 2019. WellCare opened a Northern Community Triage Center in August 2019.

Early Childhood Mental Health Services



Early Childhood Mental Health Services

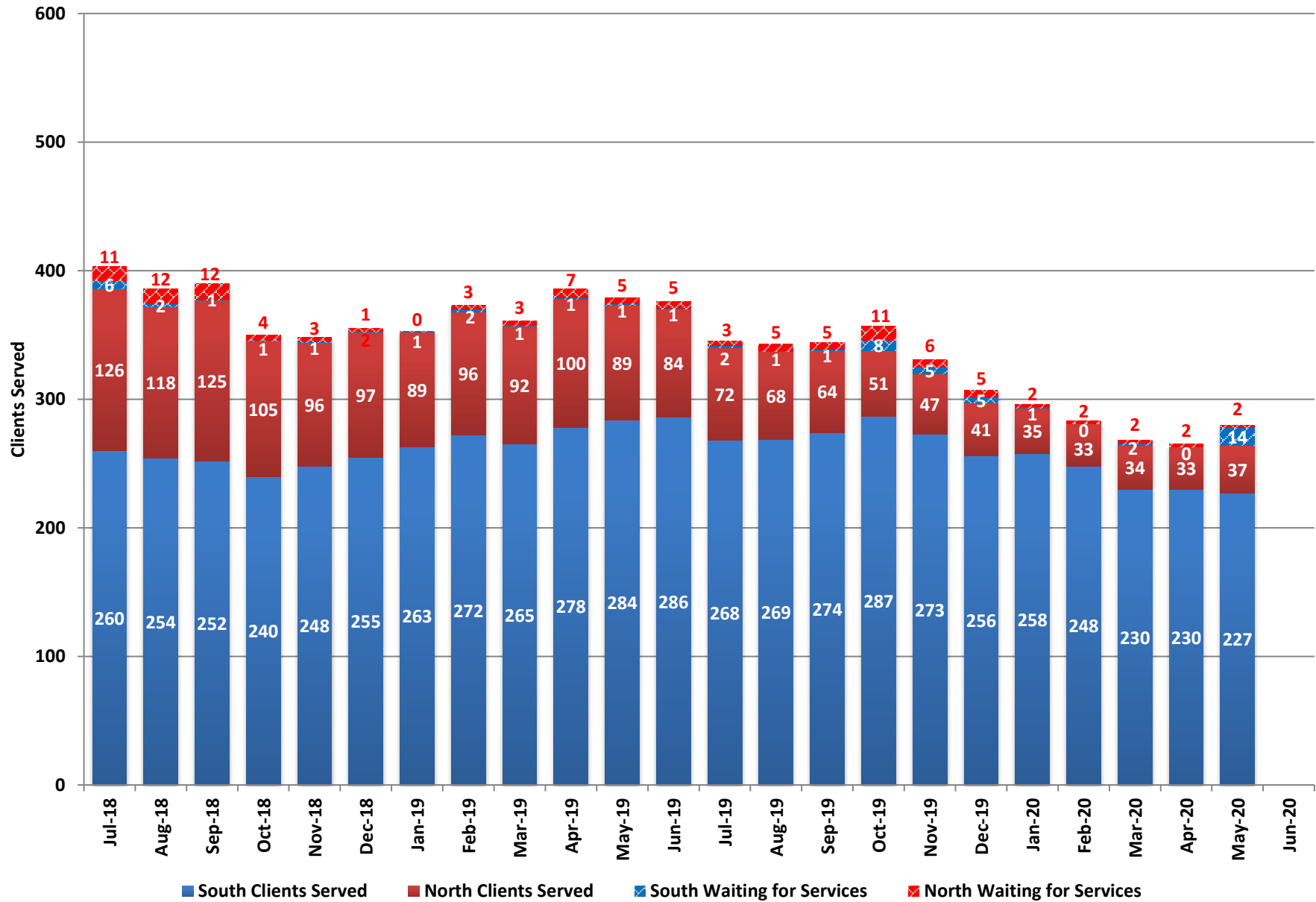
	South		North		Total	
	South Clients Served	South Waiting for Services	North Clients Served	North Waiting for Services	Total Served	Total Waiting for Services
Jul-18	226	7	63	20	289	27
Aug-18	222	1	55	18	277	19
Sep-18	205	0	57	16	262	16
Oct-18	201	1	66	9	267	10
Nov-18	211	0	68	9	279	9
Dec-18	218	1	63	12	281	13
Jan-19	205	1	65	14	270	15
Feb-19	207	1	69	16	276	17
Mar-19	224	0	43	19	267	19
Apr-19	246	1	50	12	296	13
May-19	230	0	52	10	282	10
Jun-19	228	0	50	9	278	9
Jul-19	227	0	45	10	272	10
Aug-19	227	0	48	11	275	11
Sep-19	239	0	50	10	289	10
Oct-19	257	3	57	8	314	11
Nov-19	252	3	63	7	315	10
Dec-19	238	3	60	11	298	14
Jan-20	231	3	58	12	289	15
Feb-20	224	0	54	5	278	5
Mar-20	207	0	53	5	260	5
Apr-20	190	0	54	5	244	5
May-20	175	11	58	5	233	16
Jun-20						



Fiscal Year Averages

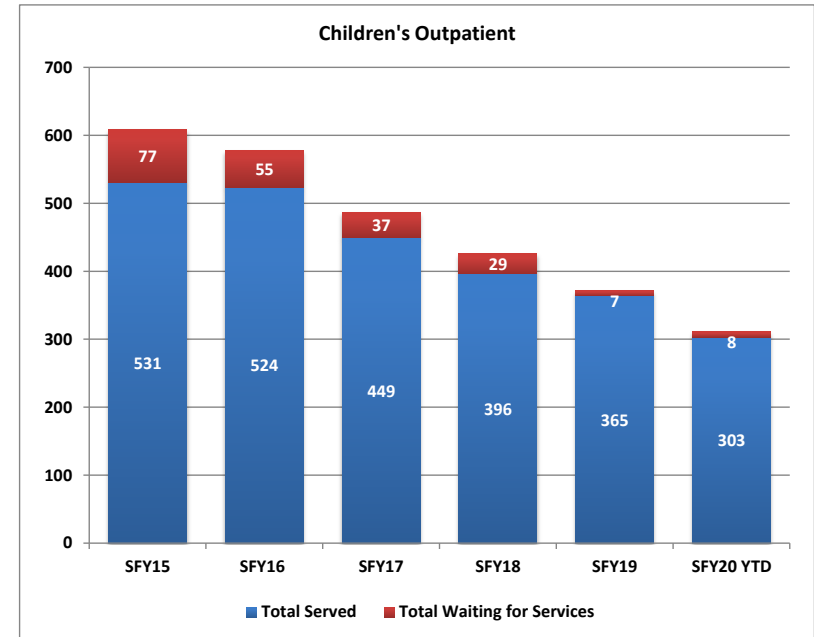
Fiscal Year	South Clients Served	South Waiting for Services	North Clients Served	North Waiting for Services	Total Served	Total Waiting for Services
SFY15	298	37	149	27	447	63
SFY16	234	17	152	30	386	47
SFY17	217	16	96	13	313	29
SFY18	231	16	70	12	301	28
SFY19	219	1	58	14	277	15
SFY20 YTD	224	2	55	8	279	10

Children's Clinical Services/Outpatient



Children's Clinical Services/Outpatient

	South Clients Served	South Waiting for Services	North Clients Served	North Waiting for Services	Total Served	Total Waiting for Services
Jul-18	260	6	126	11	386	17
Aug-18	254	2	118	12	372	14
Sep-18	252	1	125	12	377	13
Oct-18	240	1	105	4	345	5
Nov-18	248	1	96	3	344	4
Dec-18	255	1	97	2	352	3
Jan-19	263	1	89	0	352	1
Feb-19	272	2	96	3	368	5
Mar-19	265	1	92	3	357	4
Apr-19	278	1	100	7	378	8
May-19	284	1	89	5	373	6
Jun-19	286	1	84	5	370	6
Jul-19	268	2	72	3	340	5
Aug-19	269	1	68	5	337	6
Sep-19	274	1	64	5	338	6
Oct-19	287	8	51	11	338	19
Nov-19	273	5	47	6	320	11
Dec-19	256	5	41	5	297	10
Jan-20	258	1	35	2	293	3
Feb-20	248	0	33	2	281	2
Mar-20	230	2	34	2	264	4
Apr-20	230	0	33	2	263	2
May-20	227	14	37	2	264	16
Jun-20						

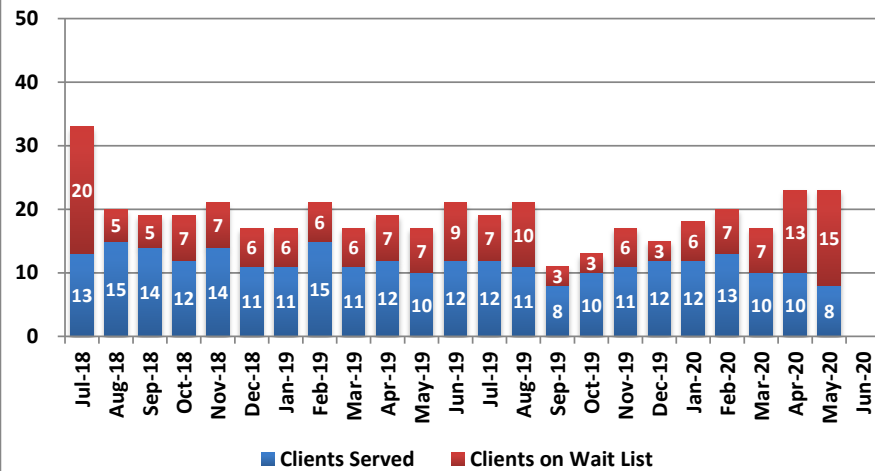


Fiscal Year Averages

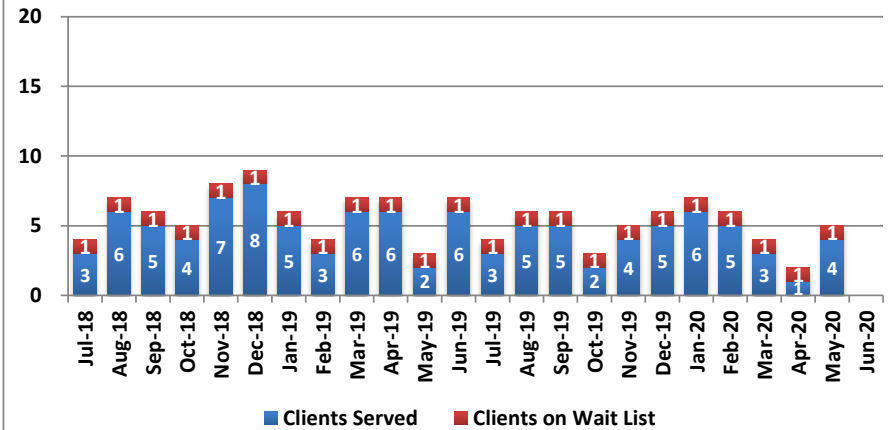
Fiscal Year	South Clients Served	South Waiting for Services	North Clients Served	North Waiting for Services	Total Served	Total Waiting for Services
SFY15	341	38	189	39	531	77
SFY16	335	25	189	30	524	55
SFY17	297	27	152	11	449	37
SFY18	278	19	118	11	396	29
SFY19	263	2	101	6	365	7
SFY20 YTD	256	4	47	4	303	8

Children's Mental Health - South

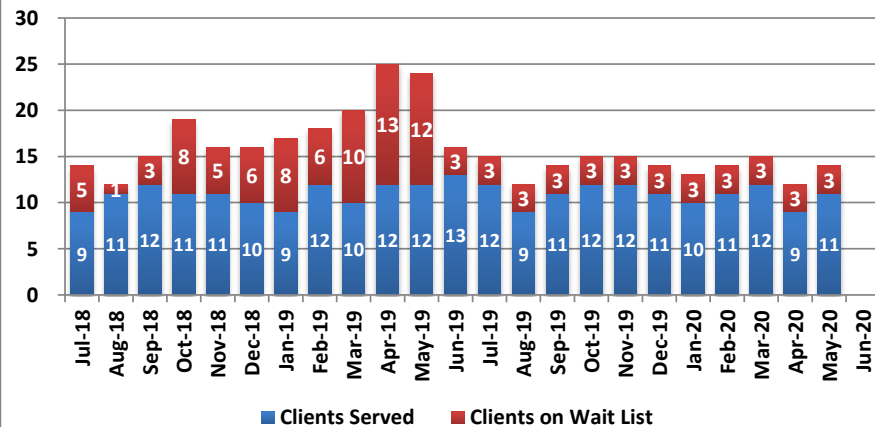
Oasis On Campus Homes



Desert Willow Treatment Center - Acute Services



Desert Willow Treatment Center - Residential Services



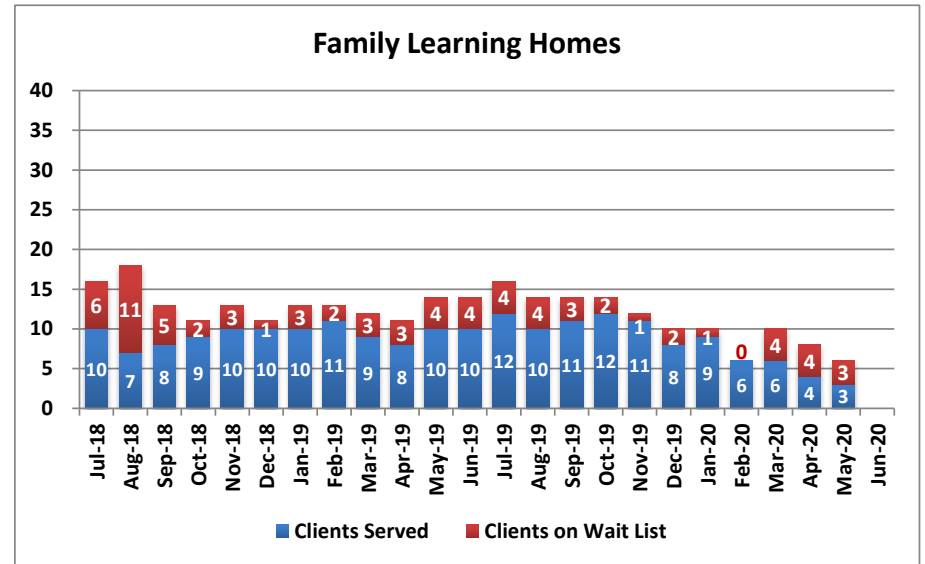
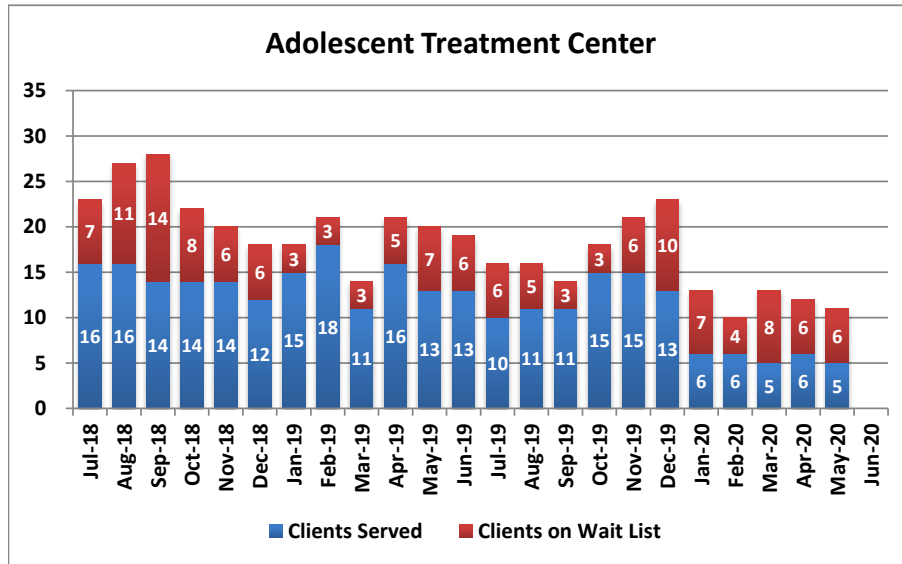
Children's Mental Health - South

	Oasis On Campus Homes			Desert Willow Treatment Center - Acute Services			Desert Willow Treatment Center - Residential Services		
	Clients Served	Clients on Wait List	Average Length of Stay	Clients Served	Clients on Wait List	Average Length of Stay	Clients Served	Clients on Wait List	Average Length of Stay
Jul-18	13	20	107	3	1	5	9	5	89
Aug-18	15	5	112	6	1	14	11	1	65
Sep-18	14	5	135	5	1	19	12	3	88
Oct-18	12	7	158	4	1	40	11	8	107
Nov-18	14	7	164	7	1	9	11	5	107
Dec-18	11	6	159	8	1	10	10	6	113
Jan-19	11	6	139	5	1	16	9	8	100
Feb-19	15	6	126	3	1	8	12	6	65
Mar-19	11	6	131	6	1	10	10	10	88
Apr-19	12	7	105	6	1	6	12	13	89
May-19	10	7	112	2	1	15	12	12	70
Jun-19	12	9	121	6	1	13	13	3	72
Jul-19	12	7	71	3	1	5	12	3	84
Aug-19	11	10	64	5	1	13	9	3	81
Sep-19	8	3	72	5	1	21	11	3	80
Oct-19	10	3	75	2	1	23	12	3	75
Nov-19	11	6	95	4	1	7	12	3	93
Dec-19	12	3	95	5	1	6	11	3	84
Jan-20	12	6	108	6	1	18	10	3	87
Feb-20	13	7	110	5	1	31	11	3	86
Mar-20	10	7	113	3	1	42	12	3	84
Apr-20	10	13	143	1	1	6	9	3	98
May-20	8	15	169	4	1	3	11	3	88
Jun-20									

Fiscal Year Averages

	Oasis On Campus Homes			Desert Willow Treatment Center - Acute Services			Desert Willow Treatment Center - Residential Services		
Fiscal Year	Clients Served	Clients on Wait List	Average Length of Stay	Clients Served	Clients on Wait List	Average Length of Stay	Clients Served	Clients on Wait List	Average Length of Stay
SFY15	15	16	107	23	0	99	22	0	90
SFY16	19	32	128	12	0	137	16	2	109
SFY17	17	16	143	8	1	73	9	7	70
SFY18	16	21	127	4	0	17	11	6	91
SFY19	13	8	131	5	1	14	11	7	88
SFY20 YTD	11	7	101	4	1	16	11	3	86

Children's Mental Health - North



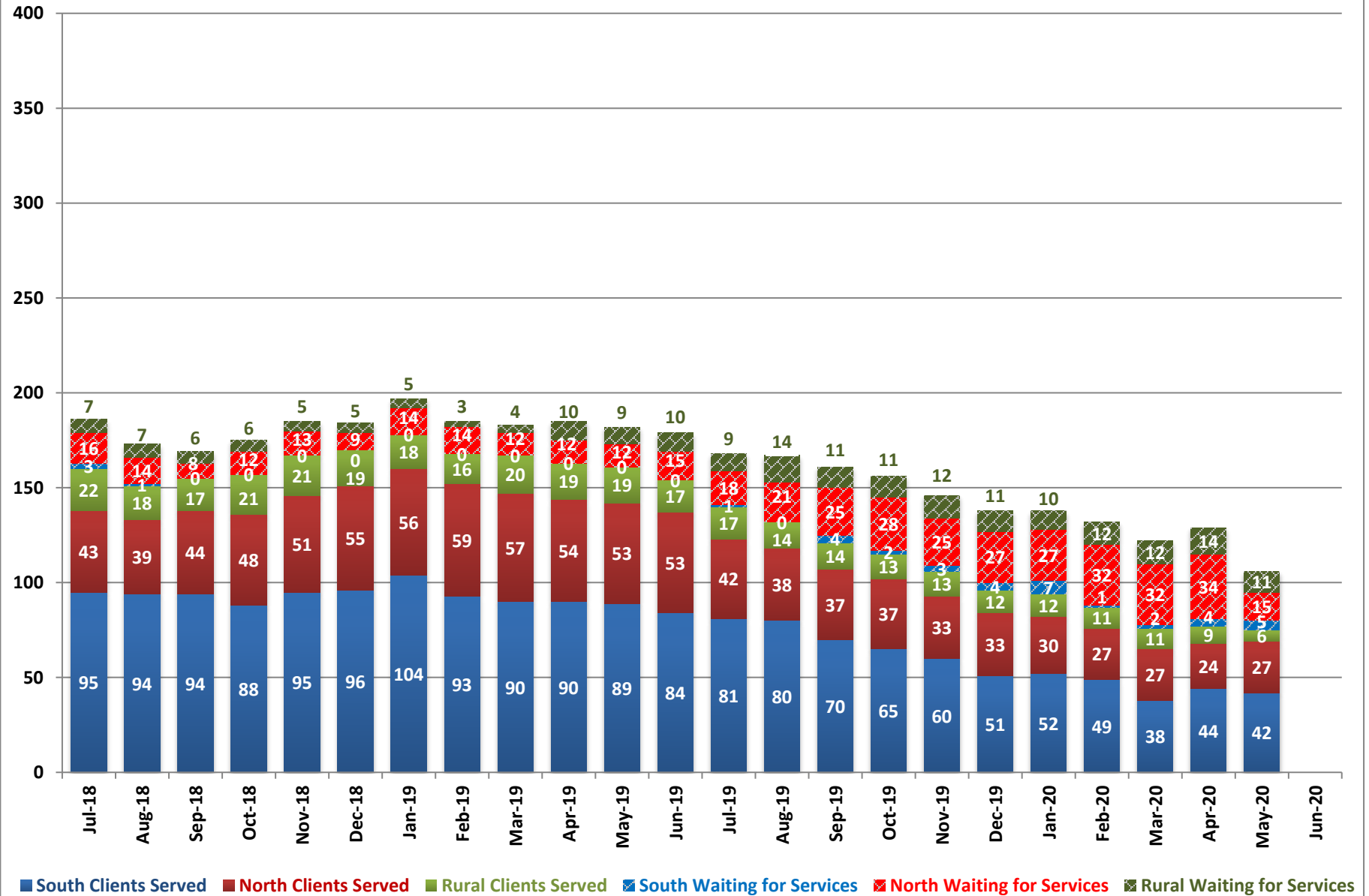
Children's Mental Health - North

	Adolescent Treatment Center			Family Learning Homes		
	Clients Served	Clients on Wait List	Average Length of Stay	Clients Served	Clients on Wait List	Average Length of Stay
Jul-18	16	7	69	10	6	94
Aug-18	16	11	76	7	11	69
Sep-18	14	14	98	8	5	43
Oct-18	14	8	90	9	2	58
Nov-18	14	6	92	10	3	67
Dec-18	12	6	75	10	1	80
Jan-19	15	3	73	10	3	79
Feb-19	18	3	86	11	2	80
Mar-19	11	3	83	9	3	66
Apr-19	16	5	83	8	3	64
May-19	13	7	68	10	4	71
Jun-19	13	6	73	10	4	68
Jul-19	10	6	75	12	4	84
Aug-19	11	5	48	10	4	68
Sep-19	11	3	40	11	3	65
Oct-19	15	3	51	12	2	63
Nov-19	15	6	71	11	1	71
Dec-19	13	10	101	8	2	95
Jan-20	6	7	107	9	1	85
Feb-20	6	4	88	6	0	95
Mar-20	5	8	82	6	4	126
Apr-20	6	6	98	4	4	94
May-20	5	6	114	3	3	62
Jun-20						

Fiscal Year Averages

Fiscal Year	Adolescent Treatment Center			Family Learning Homes		
	Clients Served	Clients on Wait List	Average Length of Stay	Clients Served	Clients on Wait List	Average Length of Stay
SFY15	15	14	93	16	14	87
SFY16	14	14	93	19	19	103
SFY17	14	13	72	18	12	87
SFY18	13	14	88	15	5	91
SFY19	14	7	81	9	4	70
SFY20 YTD	9	6	80	8	3	82

Children's Wraparound in Nevada (WIN)



Children's Wraparound in Nevada (WIN)

	South Clients Served	South Waiting for Services	North Clients Served	North Waiting for Services	Rural Clients Served	Rural Waiting for Services	Total Served	Total Waiting for Services
Jul-18	95	3	43	16	22	7	160	26
Aug-18	94	1	39	14	18	7	151	22
Sep-18	94	0	44	8	17	6	155	14
Oct-18	88	0	48	12	21	6	157	18
Nov-18	95	0	51	13	21	5	167	18
Dec-18	96	0	55	9	19	5	170	14
Jan-19	104	0	56	14	18	5	178	19
Feb-19	93	0	59	14	16	3	168	17
Mar-19	90	0	57	12	20	4	167	16
Apr-19	90	0	54	12	19	10	163	22
May-19	89	0	53	12	19	9	161	21
Jun-19	84	0	53	15	17	10	154	25
Jul-19	81	1	42	18	17	9	140	28
Aug-19	80	0	38	21	14	14	132	35
Sep-19	70	4	37	25	14	11	121	40
Oct-19	65	2	37	28	13	11	115	41
Nov-19	60	3	33	25	13	12	106	40
Dec-19	51	4	33	27	12	11	96	42
Jan-20	52	7	30	27	12	10	94	44
Feb-20	49	1	27	32	11	12	87	45
Mar-20	38	2	27	32	11	12	76	46
Apr-20	44	4	24	34	9	14	77	52
May-20	42	5	27	15	6	11	75	31
Jun-20								

Fiscal Year Averages

Fiscal Year	South Clients Served	South Waiting for Services	North Clients Served	North Waiting for Services	Rural Clients Served	Rural Waiting for Services	Total Served	Total Waiting for Services
SFY15	159	25	92	20	48	7	299	52
SFY16	182	20	102	34	53	12	337	65
SFY17	152	13	98	28	57	16	307	56
SFY18	98	15	57	18	32	9	187	41
SFY19	93	0	51	13	19	6	163	19
SFY20 YTD	57	3	32	26	12	12	102	40