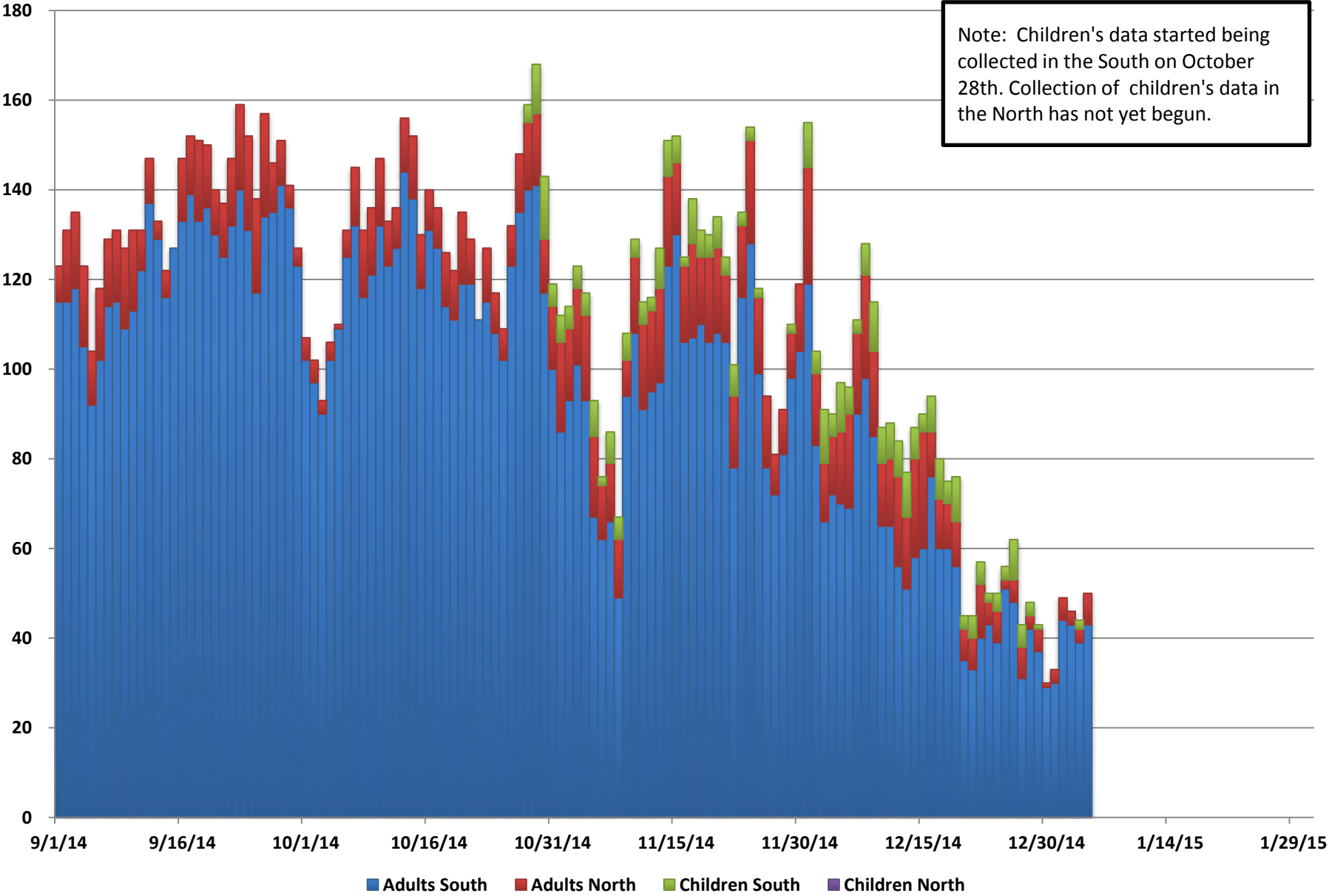


Behavioral Health Chart Pack

January 2015

Individuals Waiting in Emergency Rooms for Behavioral Health Services

Note: Children's data started being collected in the South on October 28th. Collection of children's data in the North has not yet begun.

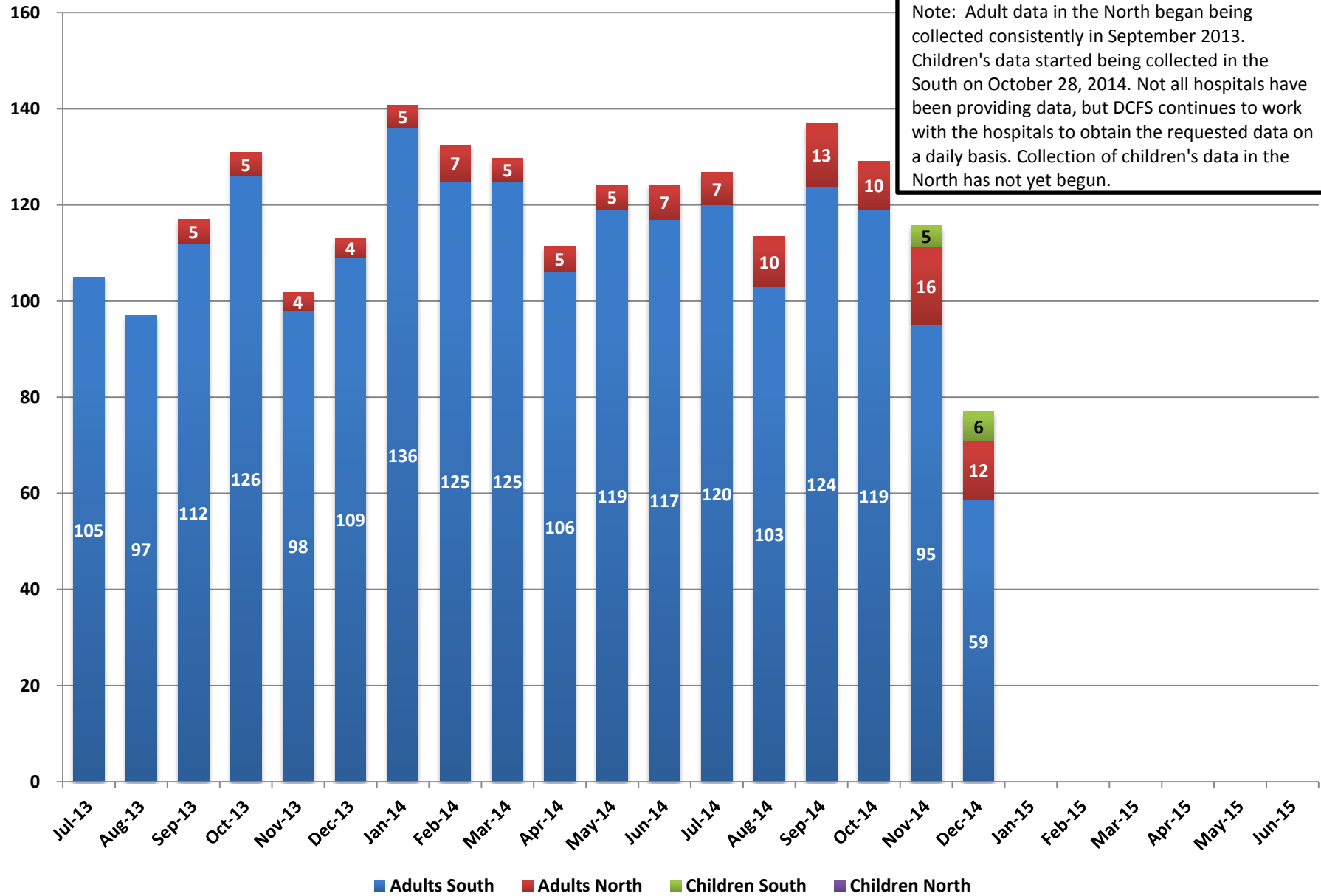


Individuals Waiting in Emergency Rooms for Behavioral Health Services

	Adults South	Adults North	Children South	Children North	Total
12/1/2014	119	26	10		155
12/2/2014	83	16	5		104
12/3/2014	66	13	12		91
12/4/2014	72	13	5		90
12/5/2014	70	16	11		97
12/6/2014	69	21	6		96
12/7/2014	90	18	3		111
12/8/2014	98	23	7		128
12/9/2014	85	19	11		115
12/10/2014	65	14	8		87
12/11/2014	65	15	8		88
12/12/2014	56	20	8		84
12/13/2014	51	16	10		77
12/14/2014	58	22	7		87
12/15/2014	60	26	4		90
12/16/2014	76	10	8		94
12/17/2014	60	11	9		80
12/18/2014	60	10	5		75
12/19/2014	56	10	10		76
12/20/2014	35	7	3		45
12/21/2014	33	7	5		45
12/22/2014	40	12	5		57
12/23/2014	43	5	2		50
12/24/2014	39	7	4		50
12/25/2014	51	2	3		56
12/26/2014	48	5	9		62
12/27/2014	31	7	5		43
12/28/2014	42	3	3		48
12/29/2014	37	5	1		43
12/30/2014	29	1	0		30
12/31/2014	30	3	0		33
1/1/2015	44	5	0		49
1/2/2015	43	3	0		46
1/3/2015	39	3	2		44
1/4/2015	43	7	0		50
1/5/2015					
1/6/2015					
1/7/2015					
1/8/2015					
1/9/2015					
1/10/2015					

Individuals Waiting in Emergency Rooms for Behavioral Health Services - Monthly Average

Note: Adult data in the North began being collected consistently in September 2013. Children's data started being collected in the South on October 28, 2014. Not all hospitals have been providing data, but DCFS continues to work with the hospitals to obtain the requested data on a daily basis. Collection of children's data in the North has not yet begun.



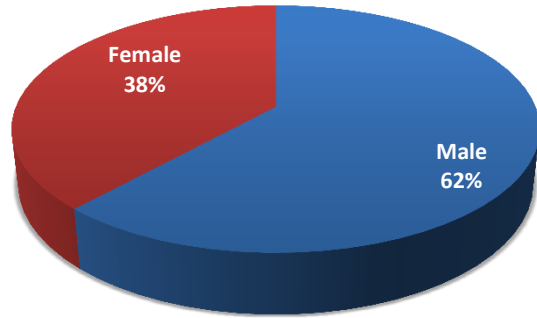
Individuals Waiting in Emergency Rooms for Behavioral Health Services - Monthly Average

	Adults South	Adults North	Children South	Children North	Total
Jul-13	105				105
Aug-13	97				97
Sep-13	112	5			117
Oct-13	126	5			131
Nov-13	98	4			102
Dec-13	109	4			113
Jan-14	136	5			141
Feb-14	125	7			132
Mar-14	125	5			130
Apr-14	106	5			111
May-14	119	5			124
Jun-14	117	7			124
Jul-14	120	7			127
Aug-14	103	10			113
Sep-14	124	13			137
Oct-14	119	10			129
Nov-14	95	16	5		116
Dec-14	59	12	6		77
Jan-15					
Feb-15					
Mar-15					
Apr-15					
May-15					
Jun-15					

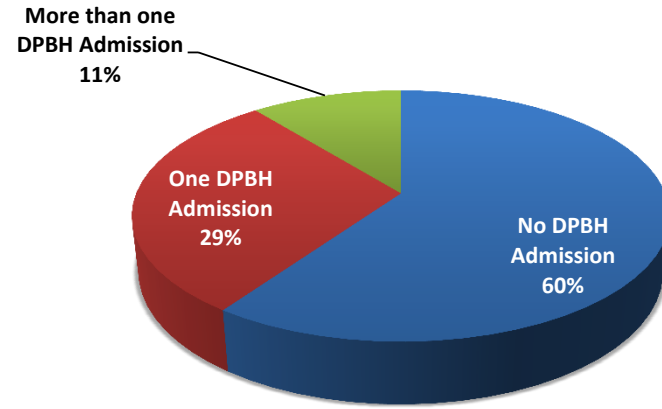
Note: Adult data in the North began being collected consistently in September 2013. Children's data started being collected in the South on October 28th. Not all hospitals have been providing data, but DCFS continues to work with the hospitals to obtain the requested data on a daily basis. Collection of children's data in the North has not yet begun.

Characteristics of Adults Waiting in Emergency Rooms for Behavioral Health Services

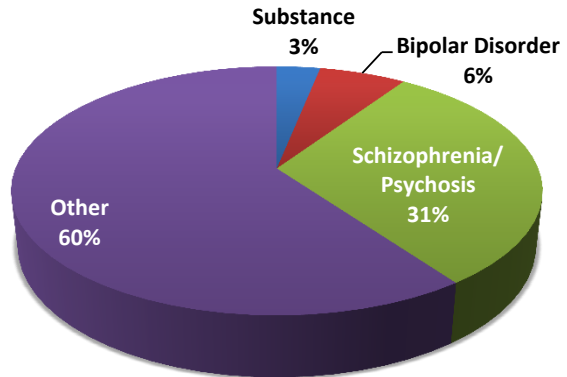
Sex



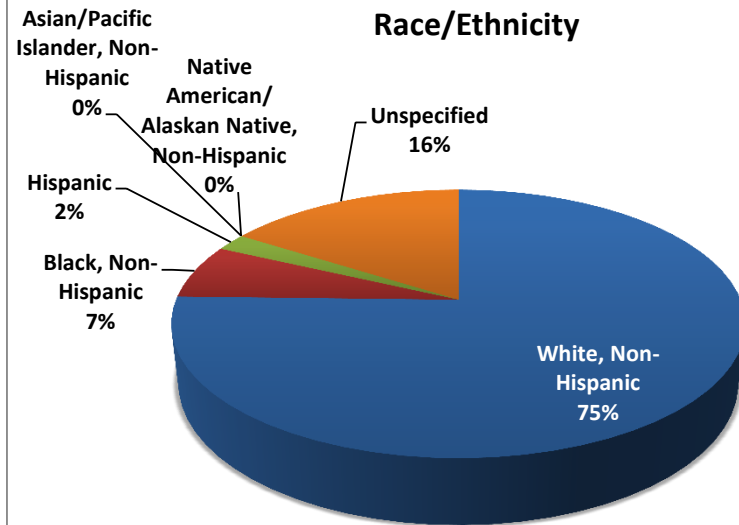
Previous Admissions to DPBH



Primary Diagnosis



Race/Ethnicity



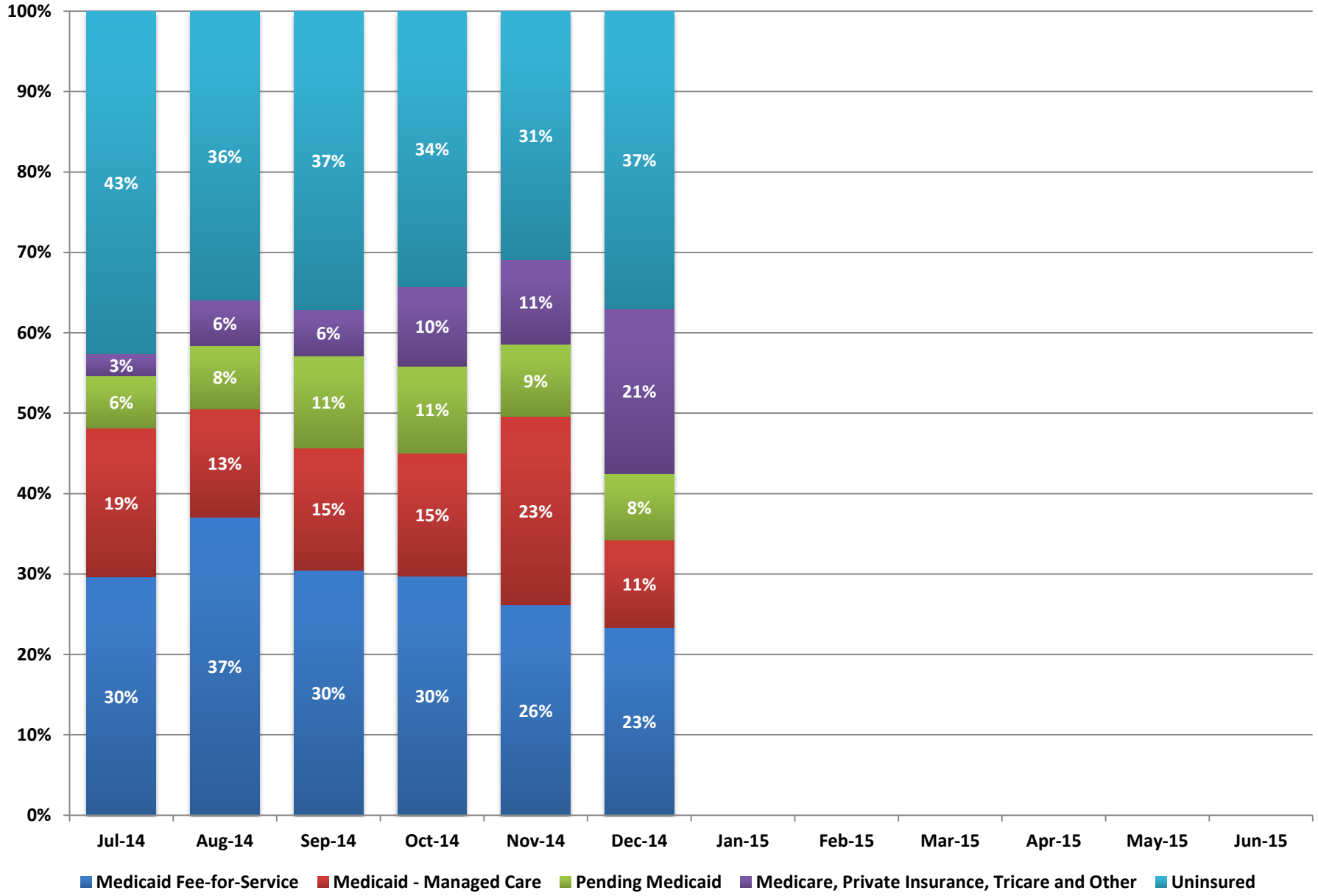
Characteristics of Adults Waiting in Emergency Rooms for Behavioral Health Services

	Sex		Admissions to DPBH within last 30 Days			Primary Diagnosis			
	Male	Female	No DPBH Admission	One DPBH Admission	More than one DPBH Admission	Substance	Bipolar Disorder	Schizophrenia/ Psychosis	Other
Nov-14	65%	35%	60%	29%	11%	6%	6%	29%	58%
Dec-14	62%	38%	N/A	N/A	N/A	3%	6%	31%	60%
Jan-15									
Feb-15									
Mar-15									
Apr-15									
May-15									
Jun-15									

	Race/Ethnicity					
	White, Non-Hispanic	Black, Non-Hispanic	Hispanic	Asian/Pacific Islander, Non-Hispanic	Native American/ Alaskan Native, Non-Hispanic	Unspecified
Nov-14	81%	4%	4%	0%	1%	10%
Dec-14	75%	7%	2%	0%	0%	16%
Jan-15						
Feb-15						
Mar-15						
Apr-15						
May-15						
Jun-15						

Note: The Admission to DPBH within the Last 30 Days, Primary Diagnosis, and Race/Ethnicity data for November is for the North only.

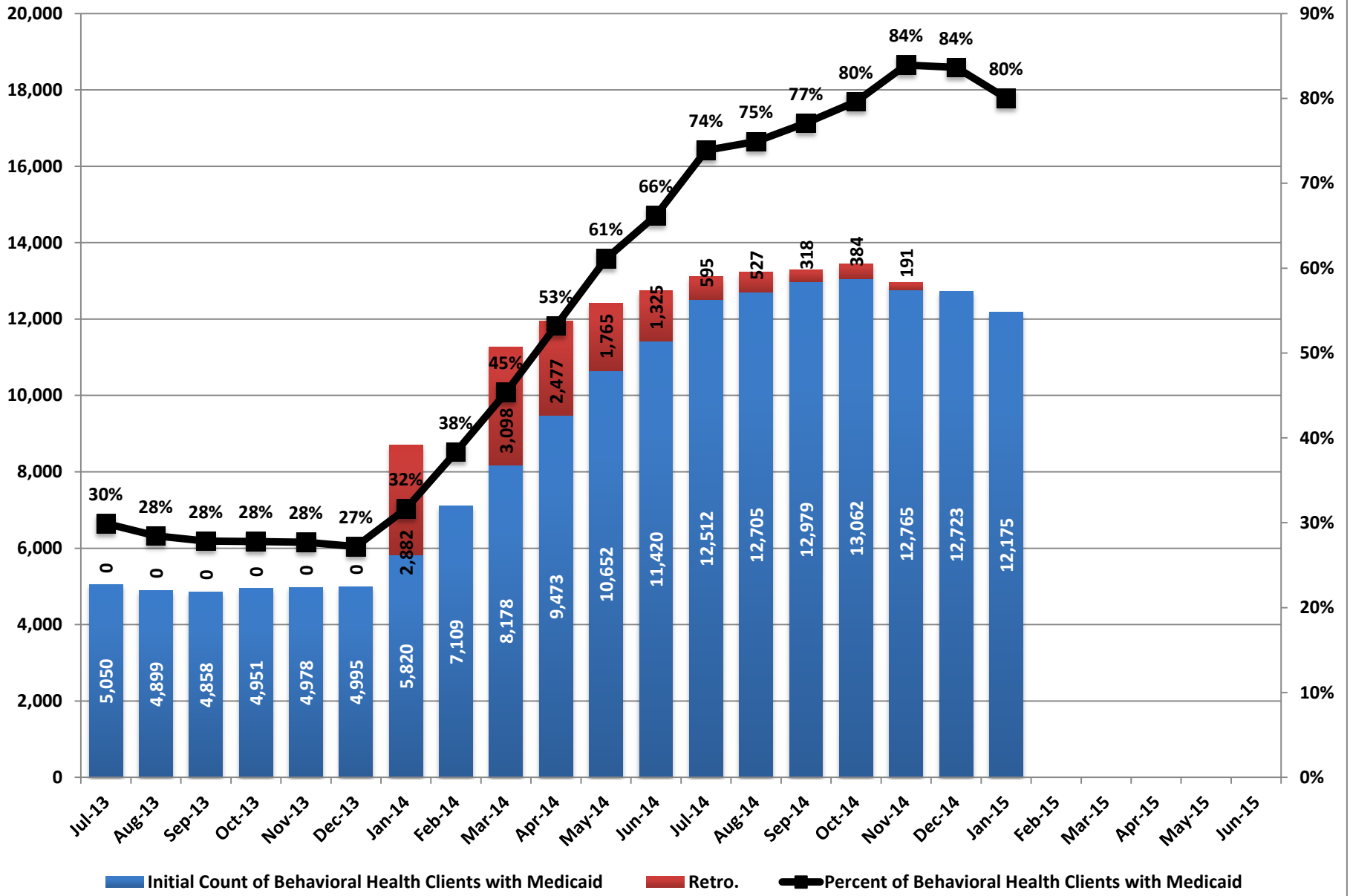
Insurance Status of Adults Waiting in Emergency Rooms for Behavioral Health Services



Insurance Status of Adults Waiting in Emergency Rooms for Behavioral Health Services (Monthly Average)

	Medicaid Fee-for-Service		Medicaid - Managed Care		Pending Medicaid		Medicare		Private Insurance		Tricare (Military)		Other		Uninsured	
	Number	Percent	Number	Percent	Number	Percent	Number	Percent	Number	Percent	Number	Percent	Number	Percent	Number	Percent
Jul-14	32	30%	20	19%	7	6%	2	2%	1	1%	0	0%	0	0%	46	43%
Aug-14	33	37%	12	13%	7	8%	3	3%	1	1%	1	1%	0	0%	32	36%
Sep-14	32	30%	16	15%	12	11%	5	5%	1	1%	0	0%	0	0%	39	37%
Oct-14	33	30%	17	15%	12	11%	6	5%	4	4%	1	1%	0	0%	38	34%
Nov-14	29	26%	26	23%	10	9%	8	7%	1	1%	0	0%	3	3%	34	31%
Dec-14	17	23%	8	11%	6	8%	7	10%	2	3%	0	0%	6	8%	27	37%
Jan-15																
Feb-15																
Mar-15																
Apr-15																
May-15																
Jun-15																

Behavioral Health Clients with Medicaid



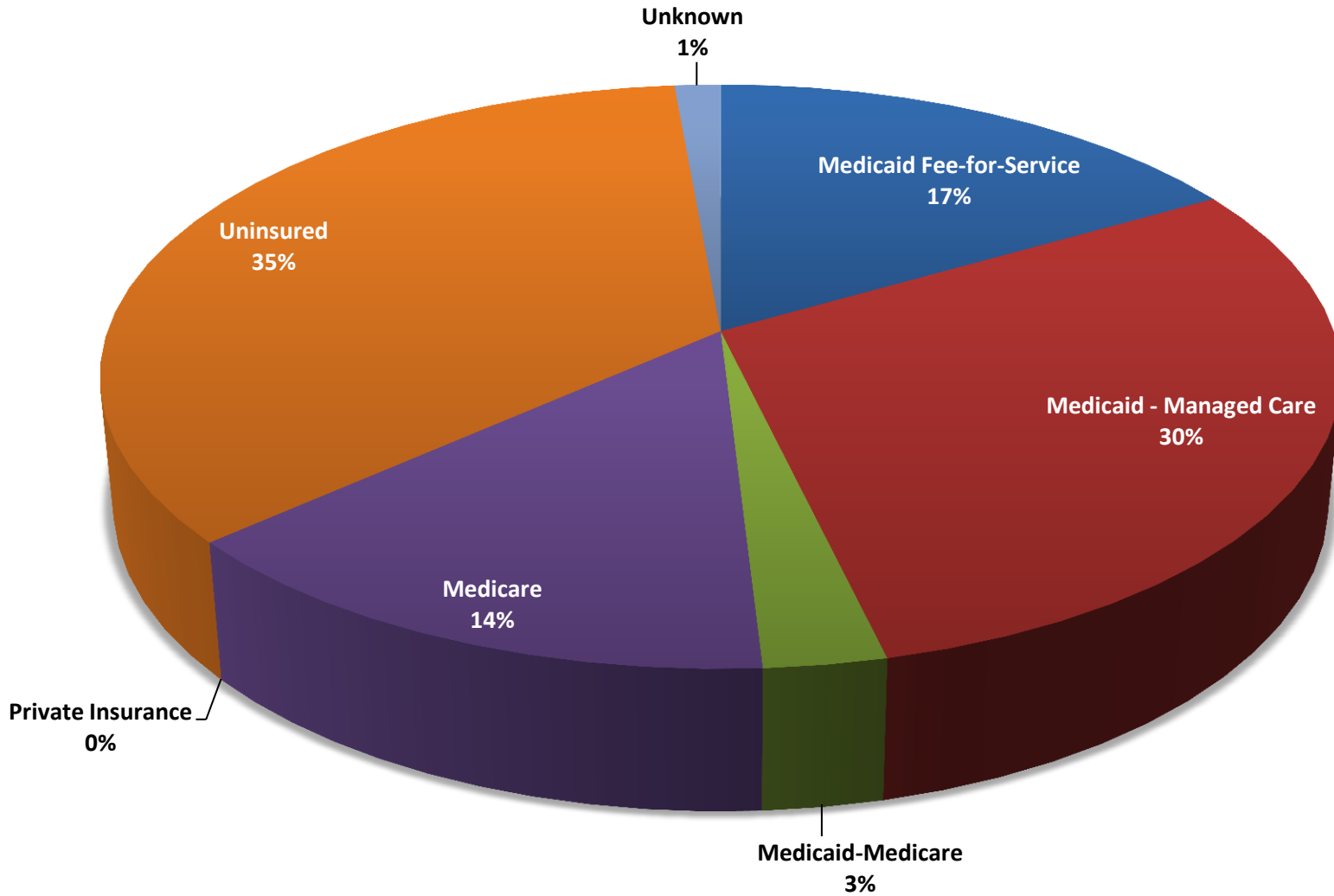
Behavioral Health Clients with Medicaid

Month	Initial Count of Behavioral Health Clients with Medicaid	Retro.	Count with Retro. Of Behavioral Health Clients with Medicaid	Percent Retro.	Total Behavioral Health Clients	Percent of Behavioral Health Clients with Medicaid
Jul-13	5,050	0	5,050	0%	16,881	30%
Aug-13	4,899	0	4,899	0%	17,212	28%
Sep-13	4,858	0	4,858	0%	17,451	28%
Oct-13	4,951	0	4,951	0%	17,820	28%
Nov-13	4,978	0	4,978	0%	17,975	28%
Dec-13	4,995	0	4,995	0%	18,371	27%
Jan-14	5,820	2,882	8,702	50%	18,395	32%
Feb-14	7,109	N/A	7,109	0%	18,543	38%
Mar-14	8,178	3,098	11,276	38%	18,023	45%
Apr-14	9,473	2,477	11,950	26%	17,806	53%
May-14	10,652	1,765	12,417	17%	17,428	61%
Jun-14	11,420	1,325	12,745	12%	17,248	66%
Jul-14	12,512	595	13,107	5%	16,938	74%
Aug-14	12,705	527	13,232	4%	16,959	75%
Sep-14	12,979	318	13,297	2%	16,836	77%
Oct-14	13,062	384	13,446	3%	16,405	80%
Nov-14	12,765	191	12,956	1%	15,210	84%
Dec-14	12,723				15,210	84%
Jan-15	12,175				15,210	80%
Feb-15						
Mar-15						
Apr-15						
May-15						
Jun-15						

Note: December 2014 and January 2015 Total Behavioral Health Clients and Percent of Behavioral Health Clients with Medicaid are estimates.

Newly eligible client enrollment appears to have stabilized. Many of those who are newly eligible will present the first month as Fee-for-Service (FFS) then move to Managed Care Medicaid the following month. It is expected that the number of Managed Care Medicaid clients will decline as we transition them to the managed care network and their community providers.

Insurance Status of Inpatient Clients



Insurance Status of Adult Inpatient Clients (Monthly Average)

DINI-TOWNSEND (NORTH)

	Insurance Status of Inpatient Clients							Breakdown of Uninsured Clients								
	Medicaid Fee-for-Service	Medicaid - Managed Care	Medicaid-Medicare	Medicare	Private Insurance	Uninsured	Unknown	Undocumented	Will assist to apply	Out-of-state Resident	Lost Benefits - will assist	Pending	Client states already applied	Client states will apply	Client refuses to apply	Unable to interview client
Oct-14	8%	23%	15%	8%	0%	42%	4%									
Nov-14	36%	25%	8%	9%	1%	21%	0%	10%	30%	0%	21%	10%	0%	0%	0%	30%
Dec-14	18%	24%	16%	14%	0%	27%	1%	0%	45%	15%	6%	7%	0%	0%	3%	25%

RAWSON-NEAL (SOUTH)

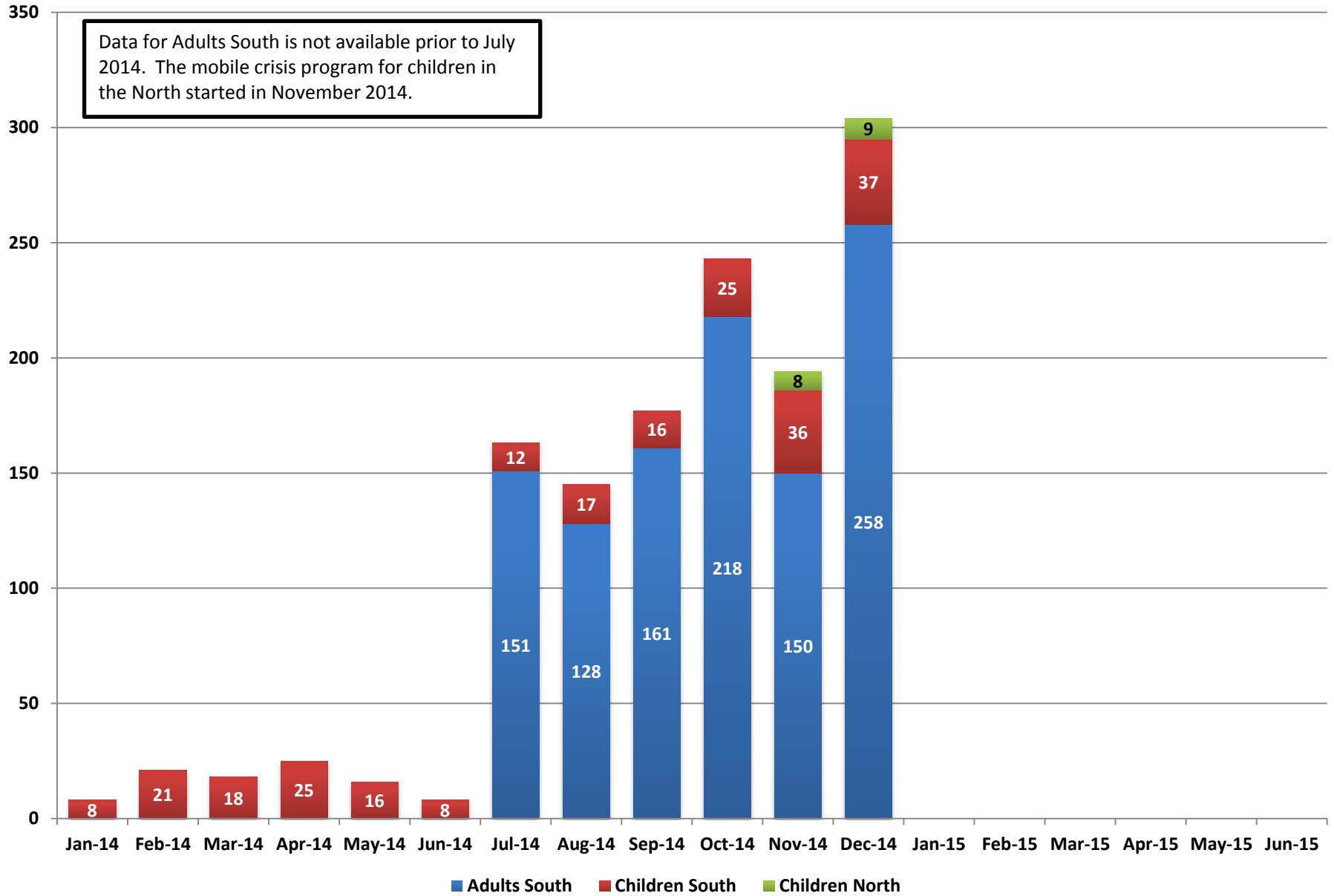
	Insurance Status of Inpatient Clients							Breakdown of Uninsured Clients								
	Medicaid Fee-for-Service	Medicaid - Managed Care	Medicaid-Medicare	Medicare	Private Insurance	Uninsured	Unknown	Undocumented	Will assist to apply	Out-of-state Resident	Lost Benefits - will assist	Pending	Client states already applied	Client states will apply	Client refuses to apply	Unable to interview client
Oct-14	19%	29%	5%	11%	1%	32%	4%									
Nov-14	21%	31%	6%	8%	0%	30%	4%	10%	7%	23%	16%	0%	16%	10%	7%	10%
Dec-14	13%	20%	23%	4%	1%	37%	3%	12%	11%	16%	10%	4%	17%	15%	7%	7%

STATEWIDE

	Insurance Status of Inpatient Clients							Breakdown of Uninsured Clients								
	Medicaid Fee-for-Service	Medicaid - Managed Care	Medicaid-Medicare	Medicare	Private Insurance	Uninsured	Unknown	Undocumented	Will assist to apply	Out-of-state Resident	Lost Benefits - will assist	Pending	Client states already applied	Client states will apply	Client refuses to apply	Unable to interview client
Oct-14	17%	28%	6%	11%	0%	33%	4%									
Nov-14	22%	30%	7%	8%	0%	29%	3%	10%	9%	21%	16%	1%	15%	9%	6%	12%
Dec-14	17%	30%	3%	14%	0%	35%	1%	11%	11%	24%	9%	5%	17%	12%	7%	5%

Mobile Crisis Clients Served

Data for Adults South is not available prior to July 2014. The mobile crisis program for children in the North started in November 2014.



Mobile Crisis

	Total Clients Served			
	Adults South	Children South	Children North	Total
Jan-14		8		8
Feb-14		21		21
Mar-14		18		18
Apr-14		25		25
May-14		16		16
Jun-14		8		8
Jul-14	151	12		163
Aug-14	128	17		145
Sep-14	161	16		177
Oct-14	218	25		243
Nov-14	150	36	8	194
Dec-14	258	37	9	304
Jan-15				
Feb-15				
Mar-15				
Apr-15				
May-15				
Jun-15				

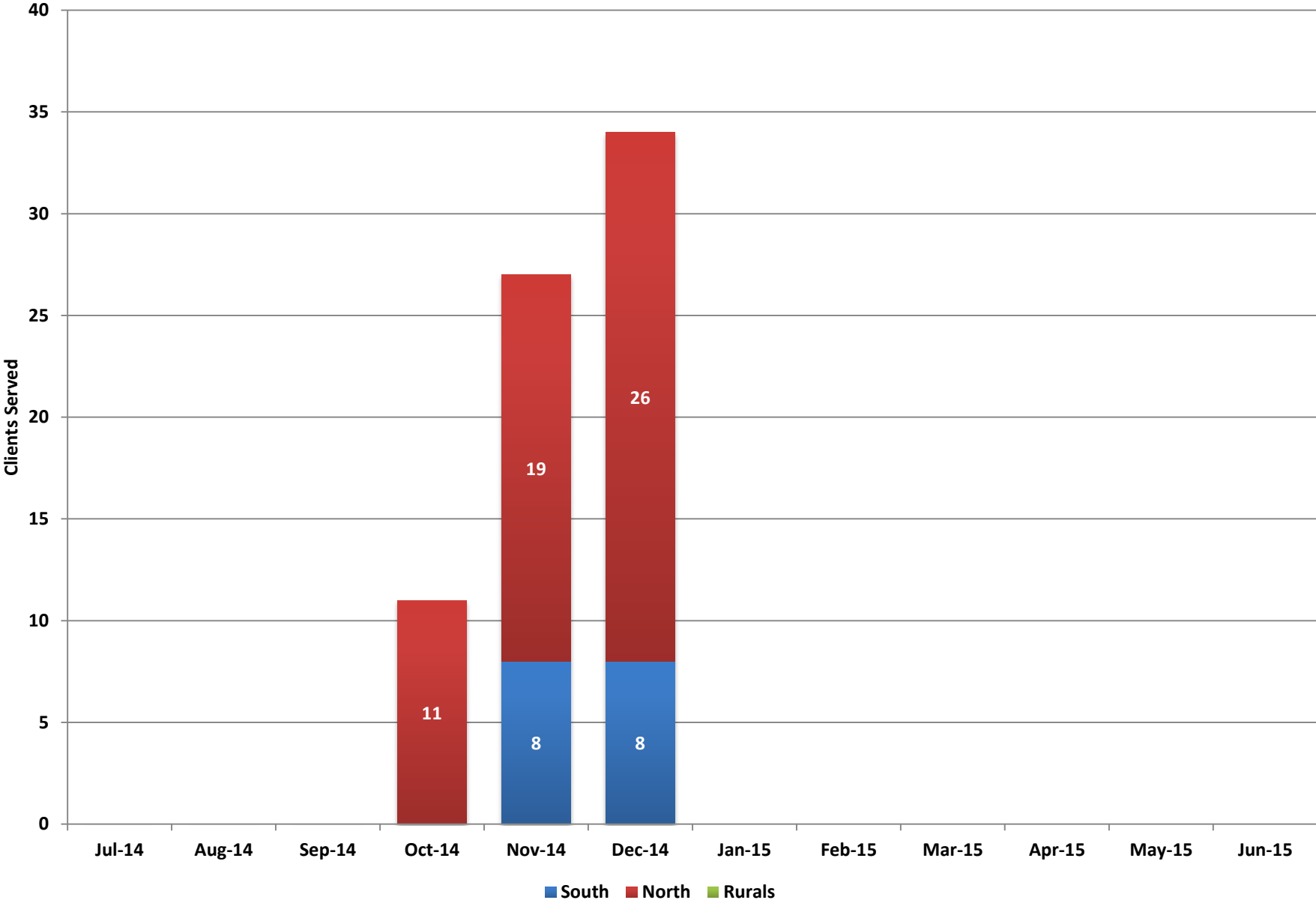
	Adults South			
	Clients Served	Hospitalization	Hospital Diversion	Hospital Diversion Rate
Jan-14				
Feb-14				
Mar-14				
Apr-14				
May-14				
Jun-14				
Jul-14	151	50	101	67%
Aug-14	128	58	70	55%
Sep-14	161	79	82	51%
Oct-14	218	113	105	48%
Nov-14	150	85	65	43%
Dec-14	258	169	89	34%
Jan-15				
Feb-15				
Mar-15				
Apr-15				
May-15				
Jun-15				

Note: Adult South data is not available prior to July 2014.

Note: Children's Mobile Crisis Response Teams began in January 2014 in the South and November 2014 in the North.

	Children South						Children North					
	Total Calls	Clients Served	Hospitalization	Hospital Diversion	Stabilization Recommended	Hospital Diversion Rate	Total Calls	Clients Served	Hospitalization	Hospital Diversion	Stabilization Recommended	Hospital Diversion Rate
Jan-14	19	8	0	8	7	100%						
Feb-14	32	21	4	17	11	81%						
Mar-14	41	18	1	17	12	94%						
Apr-14	37	25	2	23	16	92%						
May-14	22	16	2	14	9	88%						
Jun-14	12	8	1	7	5	88%						
Jul-14	15	12	3	9	9	75%						
Aug-14	20	17	1	16	9	94%						
Sep-14	32	16	0	16	9	100%						
Oct-14	37	25	0	25	23	100%						
Nov-14	50	36	3	33	28	92%	18	8	1	7	6	88%
Dec-14	57	37	4	33	27	89%	21	9	2	7	6	78%
Jan-15												
Feb-15												
Mar-15												
Apr-15												
May-15												
Jun-15												

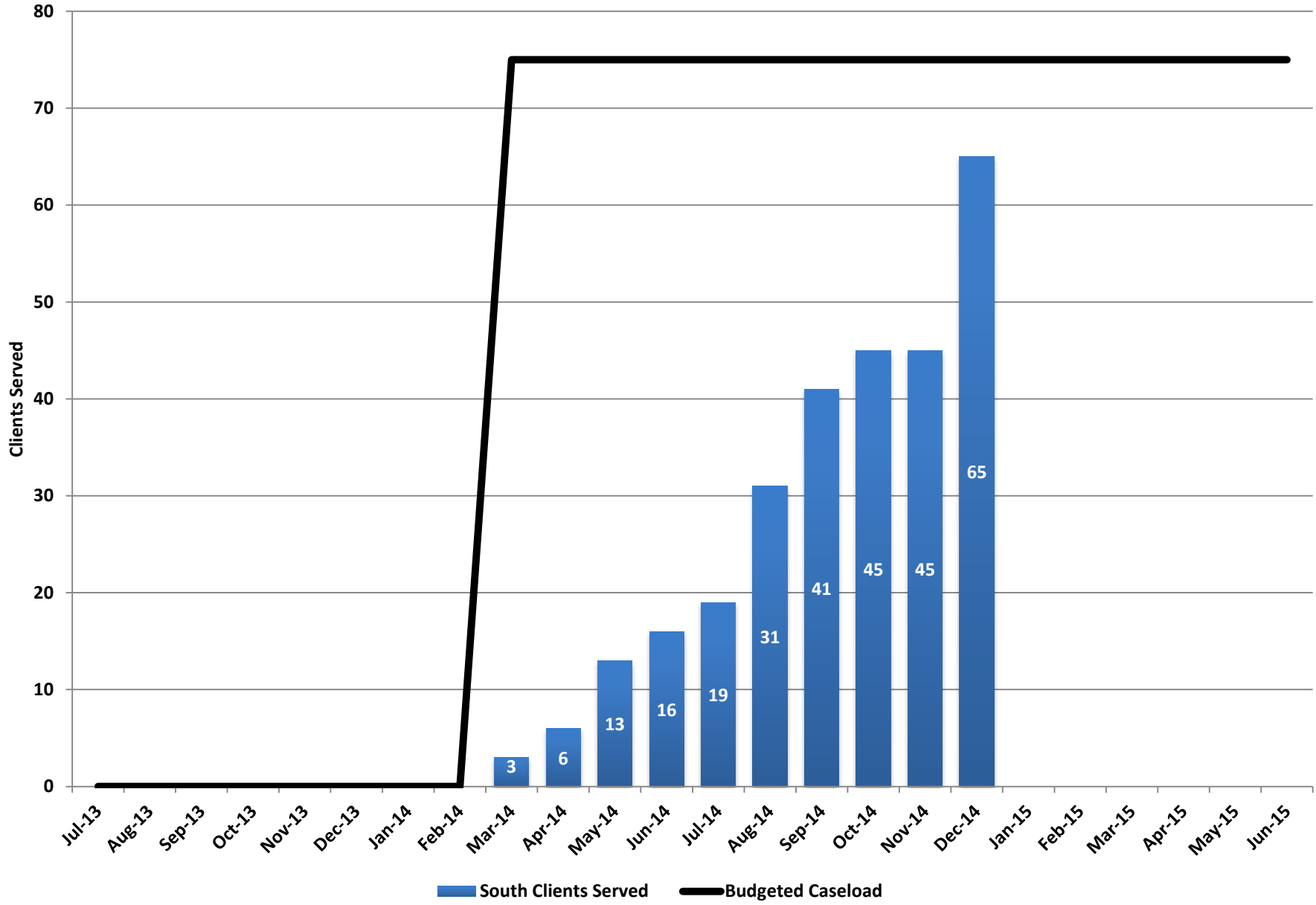
Adult Home Visiting Program



Adult Home Visiting Program

	South	North	Rurals	Total Served
Jul-14	0	0	0	0
Aug-14	0	0	0	0
Sep-14	0	0	0	0
Oct-14	0	11	0	11
Nov-14	8	19	0	27
Dec-14	8	26	0	34
Jan-15				
Feb-15				
Mar-15				
Apr-15				
May-15				
Jun-15				

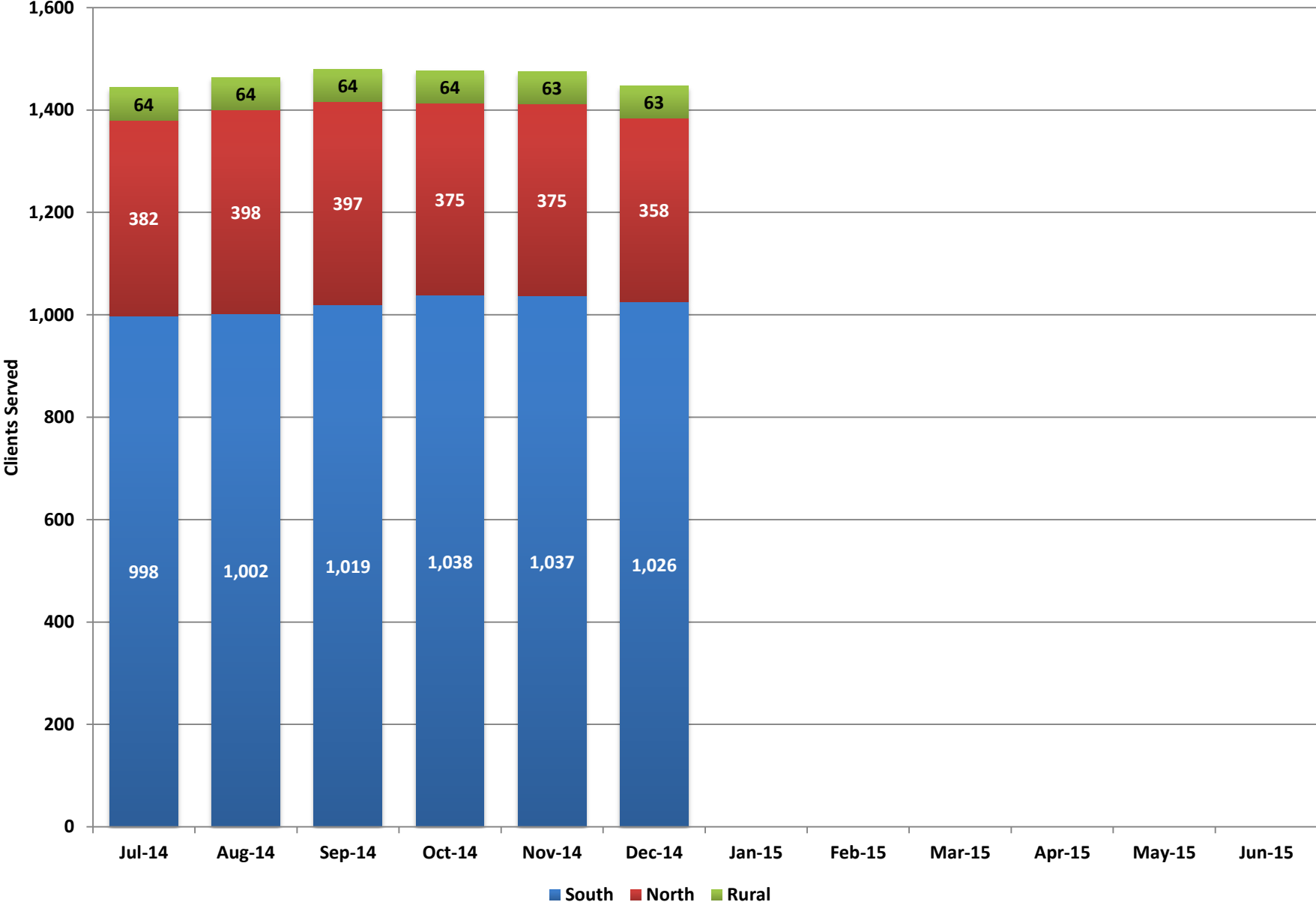
Adult Assisted Outpatient Treatment (AOT)



Adult Assisted Outpatient Treatment (AOT)

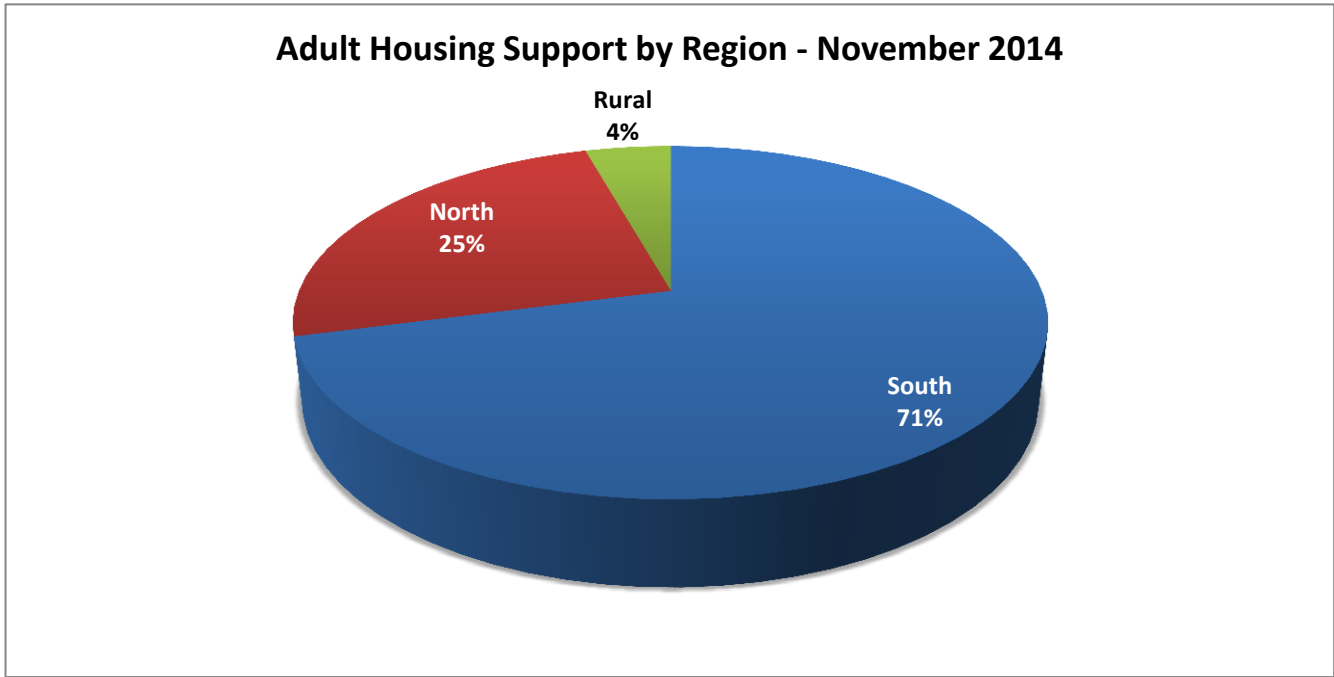
	South Clients Served	Budgeted Caseload
Jul-13	0	0
Aug-13	0	0
Sep-13	0	0
Oct-13	0	0
Nov-13	0	0
Dec-13	0	0
Jan-14	0	0
Feb-14	0	0
Mar-14	3	75
Apr-14	6	75
May-14	13	75
Jun-14	16	75
Jul-14	19	75
Aug-14	31	75
Sep-14	41	75
Oct-14	45	75
Nov-14	45	75
Dec-14	65	75
Jan-15		75
Feb-15		75
Mar-15		75
Apr-15		75
May-15		75
Jun-15		75

Adult Housing Support by Region

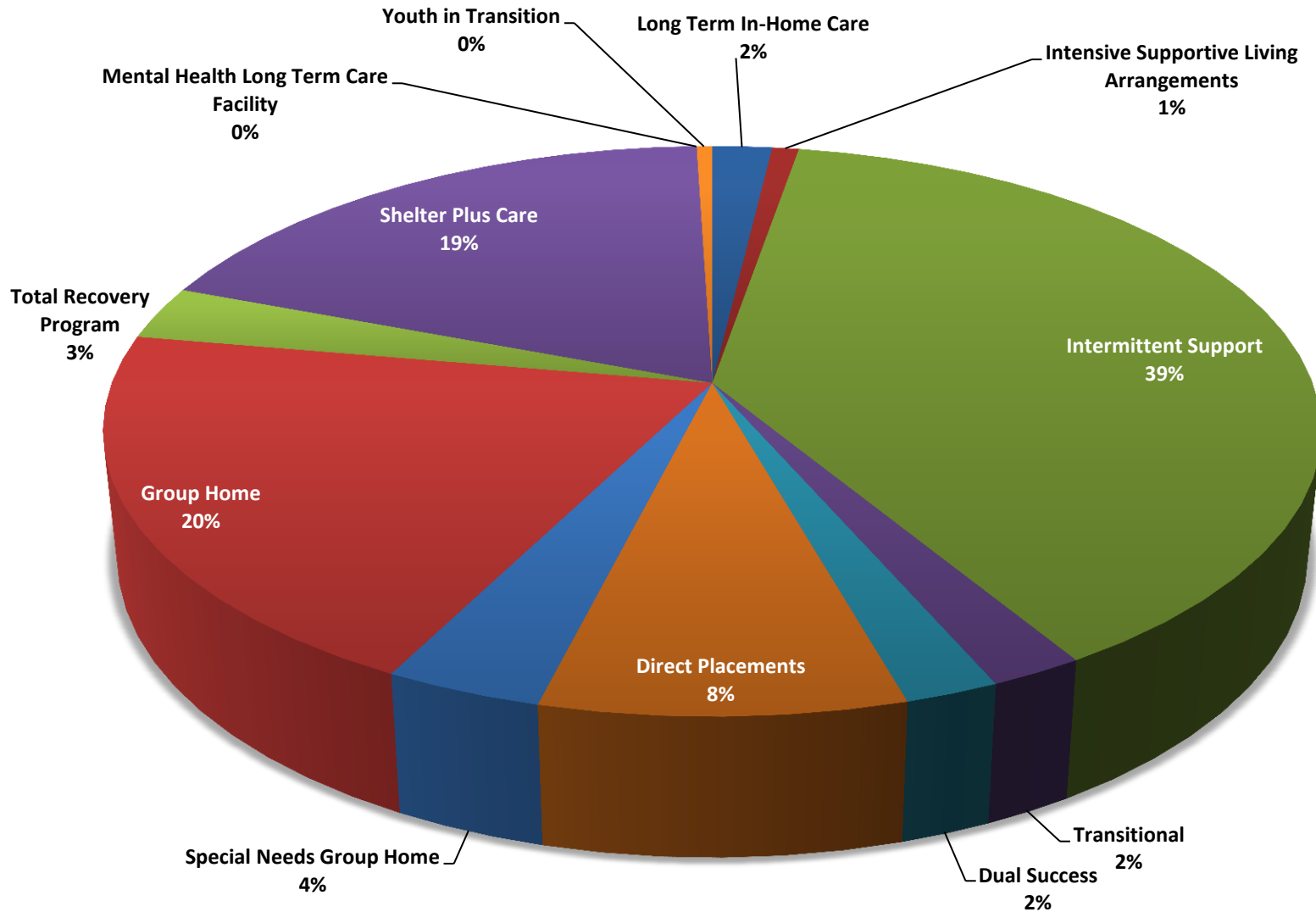


Adult Housing Support by Region

	South	North	Rural	Total Served
Jul-14	998	382	64	1,444
Aug-14	1,002	398	64	1,464
Sep-14	1,019	397	64	1,480
Oct-14	1,038	375	64	1,477
Nov-14	1,037	375	63	1,475
Dec-14	1,026	358	63	1,447
Jan-15				
Feb-15				
Mar-15				
Apr-15				
May-15				
Jun-15				



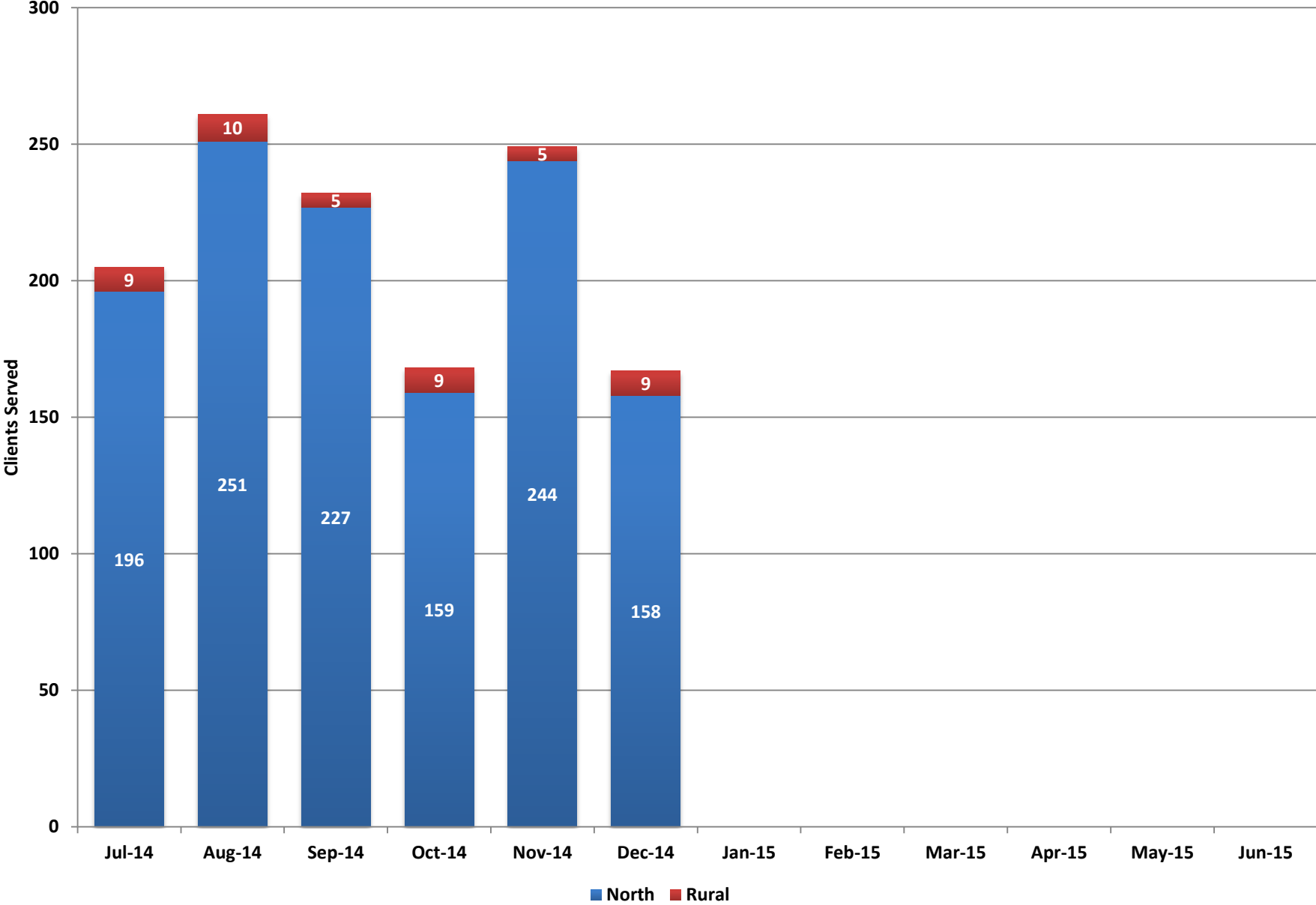
Adult Housing Support by Type



Housing Support by Type

	Long Term In-Home Care	Intensive Supportive Living Arrangements	Intermittent Support	Transitional	Dual Success	Direct Placements	Special Needs Group Home	Group Home	Total Recovery Program	Shelter Plus Care	Mental Health Long Term Care Facility	Youth in Transition
Jul-14	0	13	552	40	30	128	52	305	44	276	0	4
Aug-14	0	13	569	42	30	124	52	304	41	284	0	5
Sep-14	0	15	578	45	33	119	52	309	40	283	0	6
Oct-14	28	16	567	36	37	122	53	291	40	280	0	7
Nov-14	28	13	574	34	37	119	52	294	45	272	0	7
Dec-14	27	12	559	31	31	120	52	293	44	271	0	7
Jan-15												
Feb-15												
Mar-15												
Apr-15												
May-15												
Jun-15												

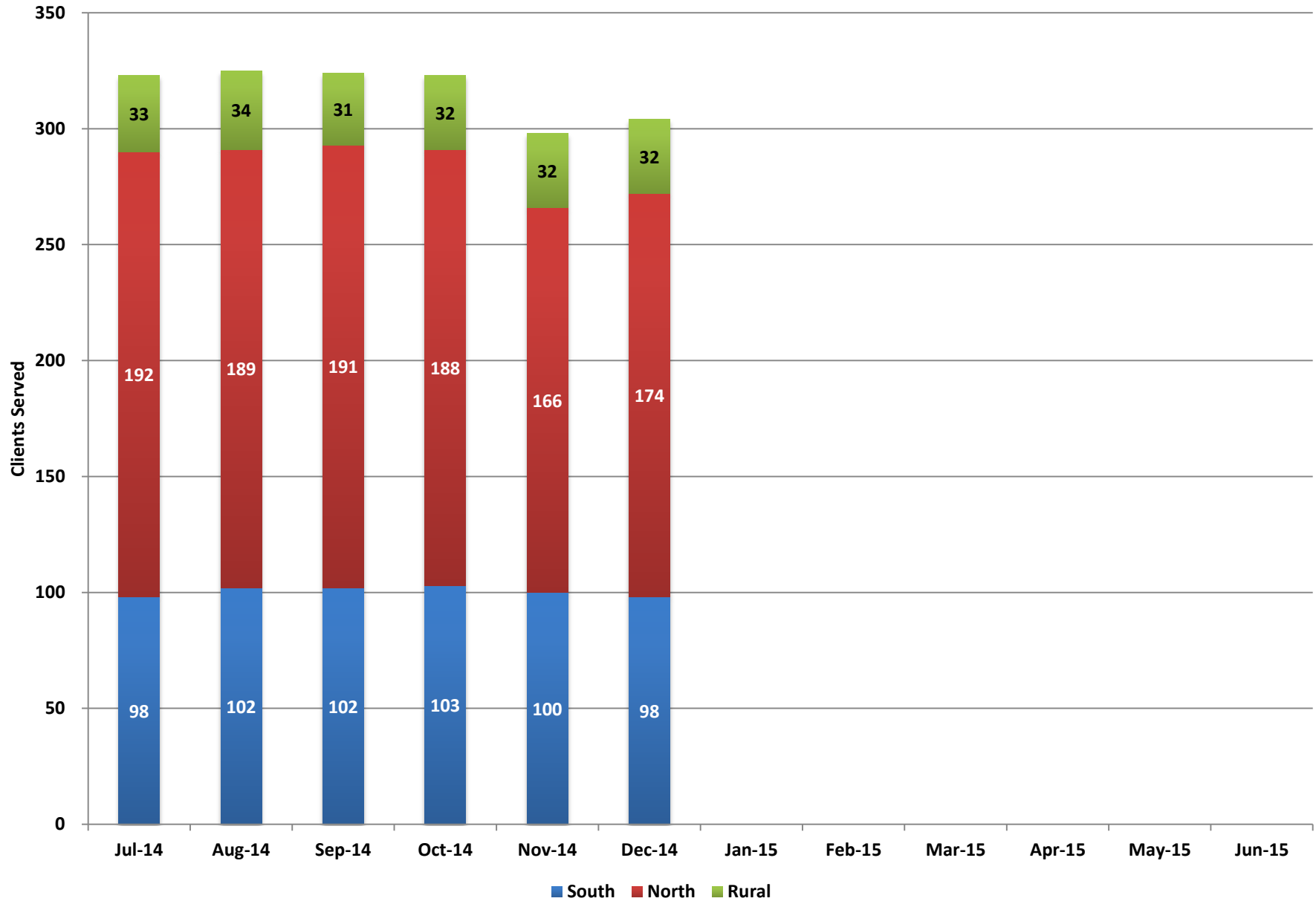
MOST



MOST

	Clients Served		
	North	Rural	Total Served
Jul-14	196	9	205
Aug-14	251	10	261
Sep-14	227	5	232
Oct-14	159	9	168
Nov-14	244	5	249
Dec-14	158	9	167
Jan-15			
Feb-15			
Mar-15			
Apr-15			
May-15			
Jun-15			

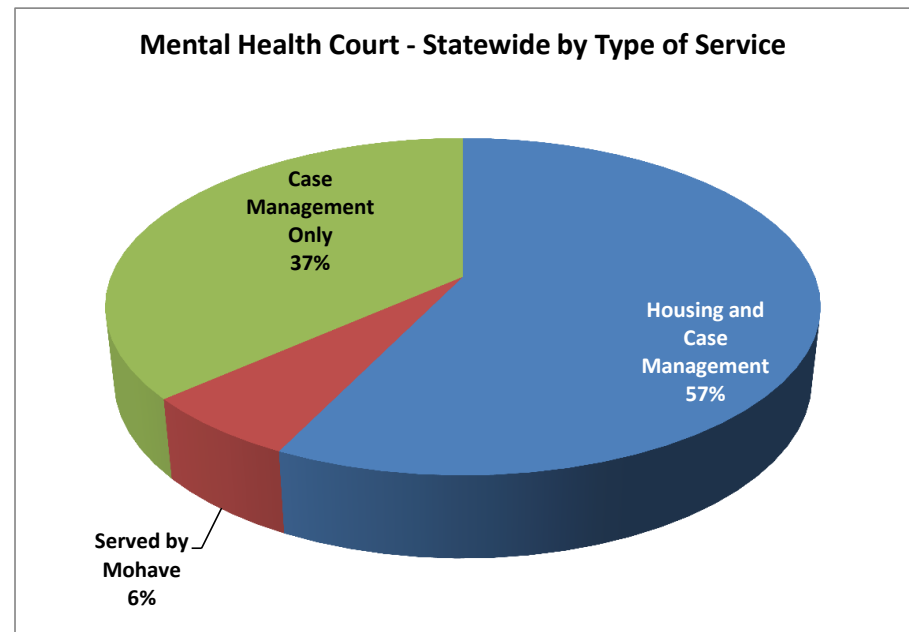
Mental Health Court



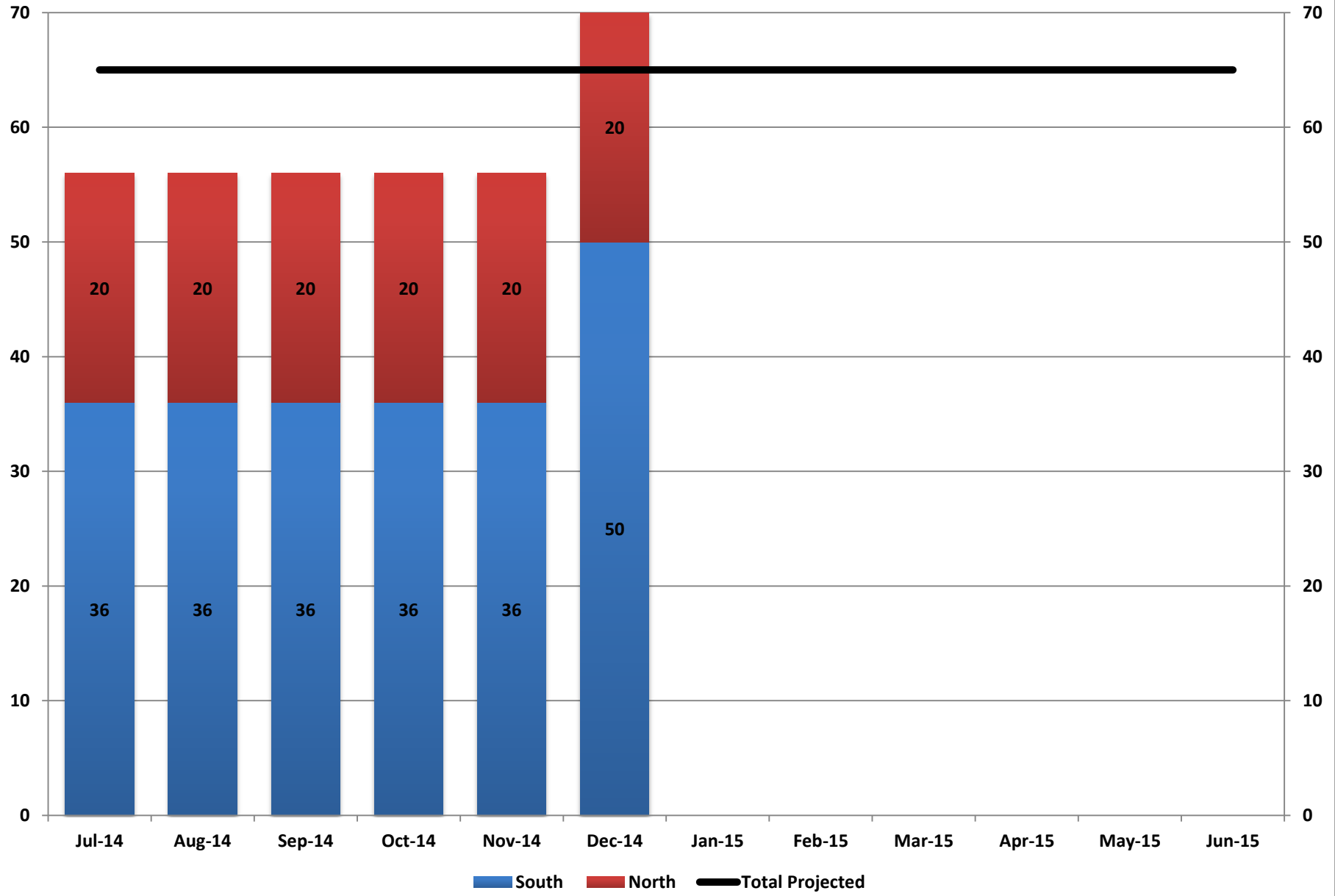
Adult Mental Health Court

	South				North				Rural			
	Housing and Case Management	Served by Mojave	Case Management Only	Total	Housing and Case Management	Served by Mojave	Case Management Only	Total	Housing and Case Management	Served by Mojave	Case Management Only	Total
Jul-14	72	25	1	98	80	1	111	192	33	0	0	33
Aug-14	74	25	3	102	85	1	103	189	34	0	0	34
Sep-14	74	25	3	102	81	1	109	191	31	0	0	31
Oct-14	78	20	5	103	83	1	104	188	32	0	0	32
Nov-14	79	12	9	100	64	1	101	166	32	0	0	32
Dec-14	75	18	5	98	67	1	106	174	32	0	0	32
Jan-15												
Feb-15												
Mar-15												
Apr-15												
May-15												
Jun-15												

Statewide				
	Housing and Case Management	Served by Mohave	Case Management Only	Total Clients Served
Jul-14	185	26	112	323
Aug-14	193	26	106	325
Sep-14	186	26	112	324
Oct-14	193	21	109	323
Nov-14	175	13	110	298
Dec-14	174	19	111	304
Jan-15				
Feb-15				
Mar-15				
Apr-15				
May-15				
Jun-15				



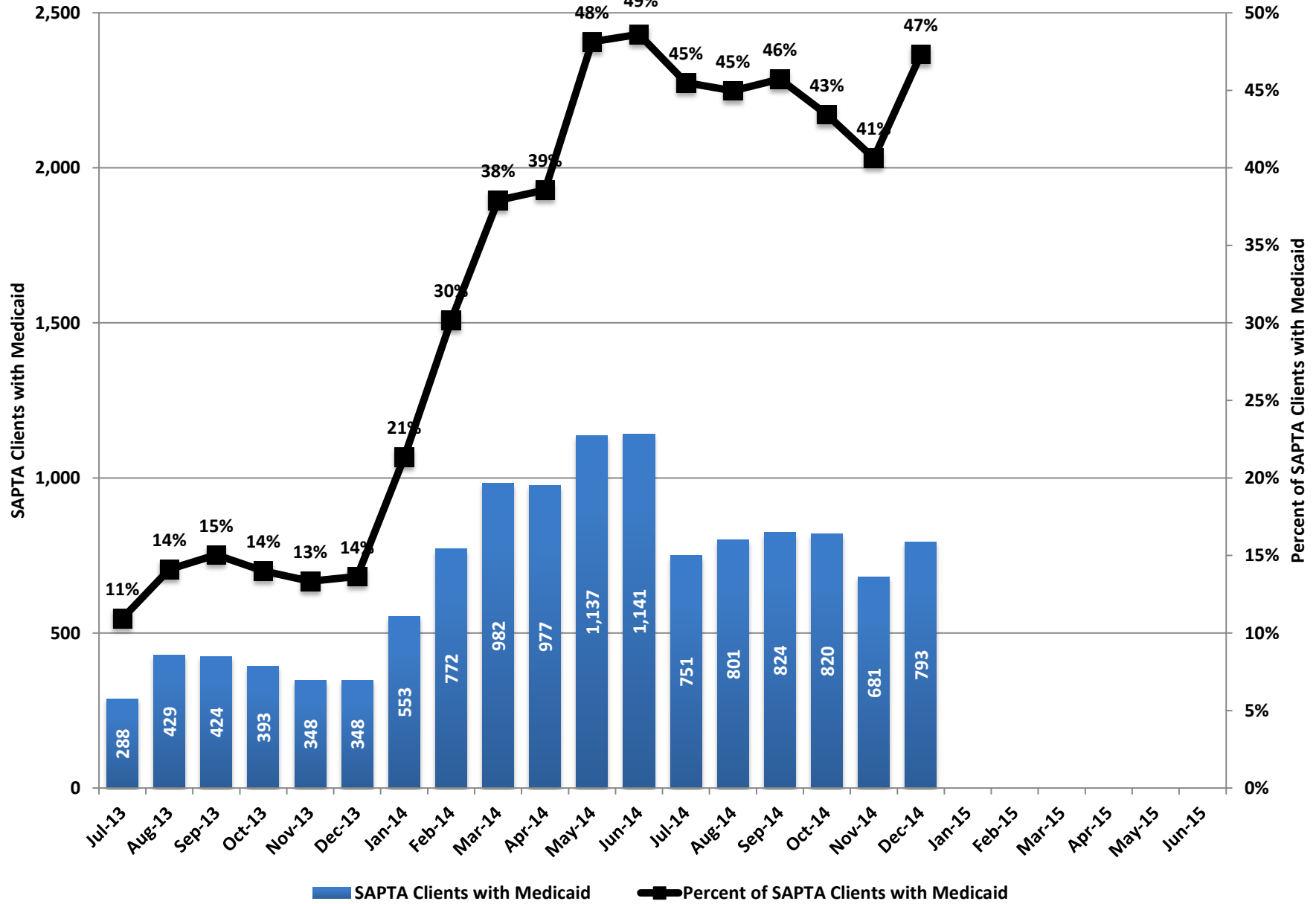
Community Triage Centers - Average Monthly Bed Capacity



Adult Community Triage Centers - Average Monthly Bed Capacity

	South	South Projected	North	North Projected	Total Served	Total Projected
Jul-14	36	50	20	15	56	65
Aug-14	36	50	20	15	56	65
Sep-14	36	50	20	15	56	65
Oct-14	36	50	20	15	56	65
Nov-14	36	50	20	15	56	65
Dec-14	50	50	20	15	70	65
Jan-15		50		15		65
Feb-15		50		15		65
Mar-15		50		15		65
Apr-15		50		15		65
May-15		50		15		65
Jun-15		50		15		65

SAPTA Clients with Medicaid

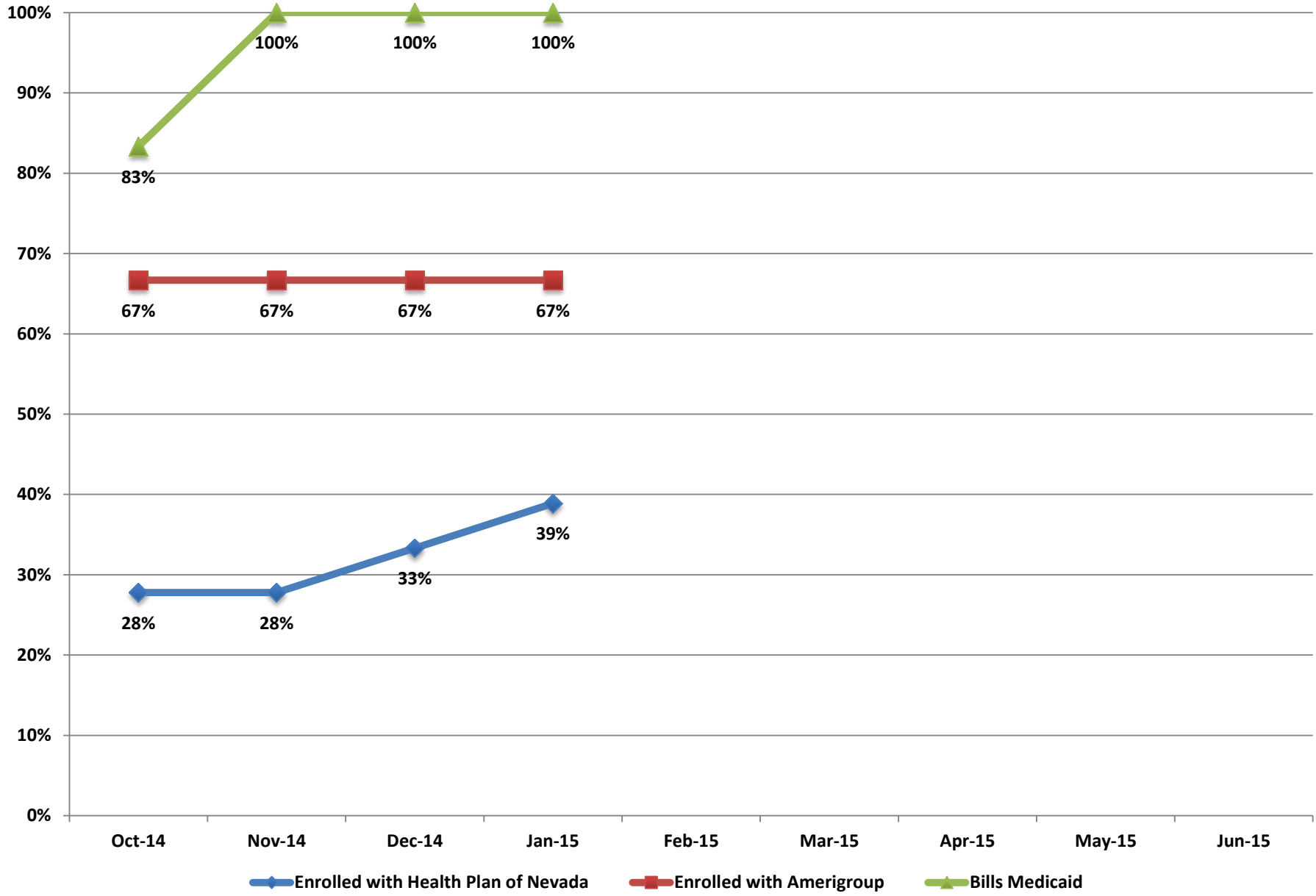


Substance Abuse Prevention and Treatment Agency (SAPTA) Clients with Medicaid

Month	SAPTA Clients with Medicaid	Total SAPTA Clients	Percent of SAPTA Clients with Medicaid
Jul-13	288	2,633	11%
Aug-13	429	3,042	14%
Sep-13	424	2,818	15%
Oct-13	393	2,807	14%
Nov-13	348	2,608	13%
Dec-13	348	2,549	14%
Jan-14	553	2,592	21%
Feb-14	772	2,558	30%
Mar-14	982	2,591	38%
Apr-14	977	2,533	39%
May-14	1,137	2,362	48%
Jun-14	1,141	2,347	49%
Jul-14	751	1,651	45%
Aug-14	801	1,781	45%
Sep-14	824	1,802	46%
Oct-14	820	1,888	43%
Nov-14	681	1,676	41%
Dec-14	793	1,676	47%
Jan-15			
Feb-15			
Mar-15			
Apr-15			
May-15			
Jun-15			

This information represents those Medicaid eligible clients for whom SAPTA received a request for reimbursement from a SAPTA funded provider. A decline in identified Medicaid eligible clients indicates fewer requests for reimbursement from SAPTA funded providers for clients who are Medicaid eligible, which is the ultimate goal.

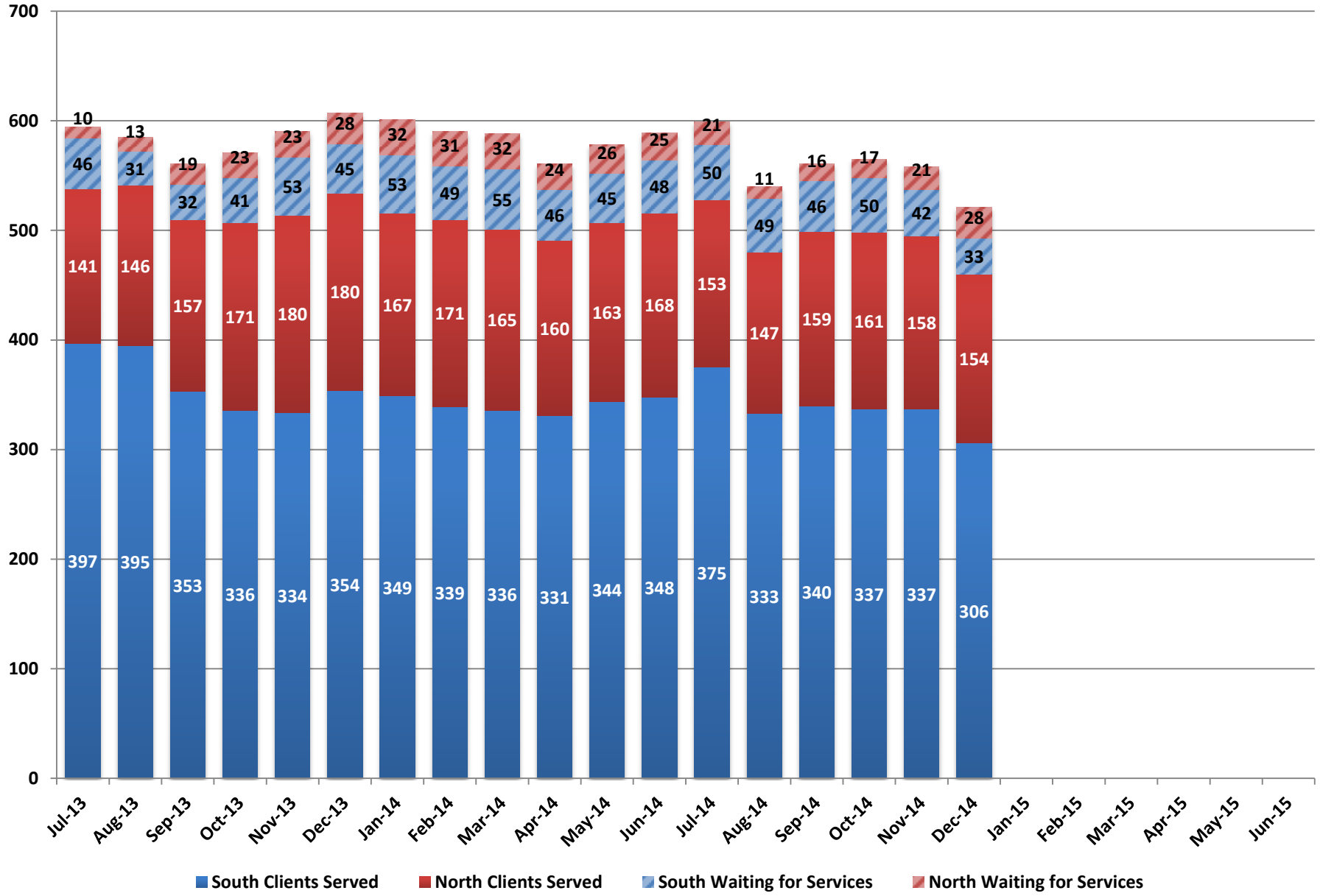
SAPTA Provider Medicaid and Managed Care Participation



SAPTA Provider Medicaid and Managed Care Participation

	Number of SAPTA Providers	Enrolled as a Fee-For-Service Medicaid Provider	% of SAPTA Providers	Enrolled with Health Plan of Nevada	% of SAPTA Providers	Enrolled with Amerigroup	% of SAPTA Providers	Process in Place to Bill Medicaid	% of SAPTA Providers	Bills Medicaid	% of SAPTA Providers
Oct-14	18	18	100%	5	28%	12	67%	18	100%	15	83%
Nov-14	18	18	100%	5	28%	12	67%	18	100%	18	100%
Dec-14	18	18	100%	6	33%	12	67%	18	100%	18	100%
Jan-15	18	18	100%	7	39%	12	67%	18	100%	18	100%
Feb-15											
Mar-15											
Apr-15											
May-15											
Jun-15											

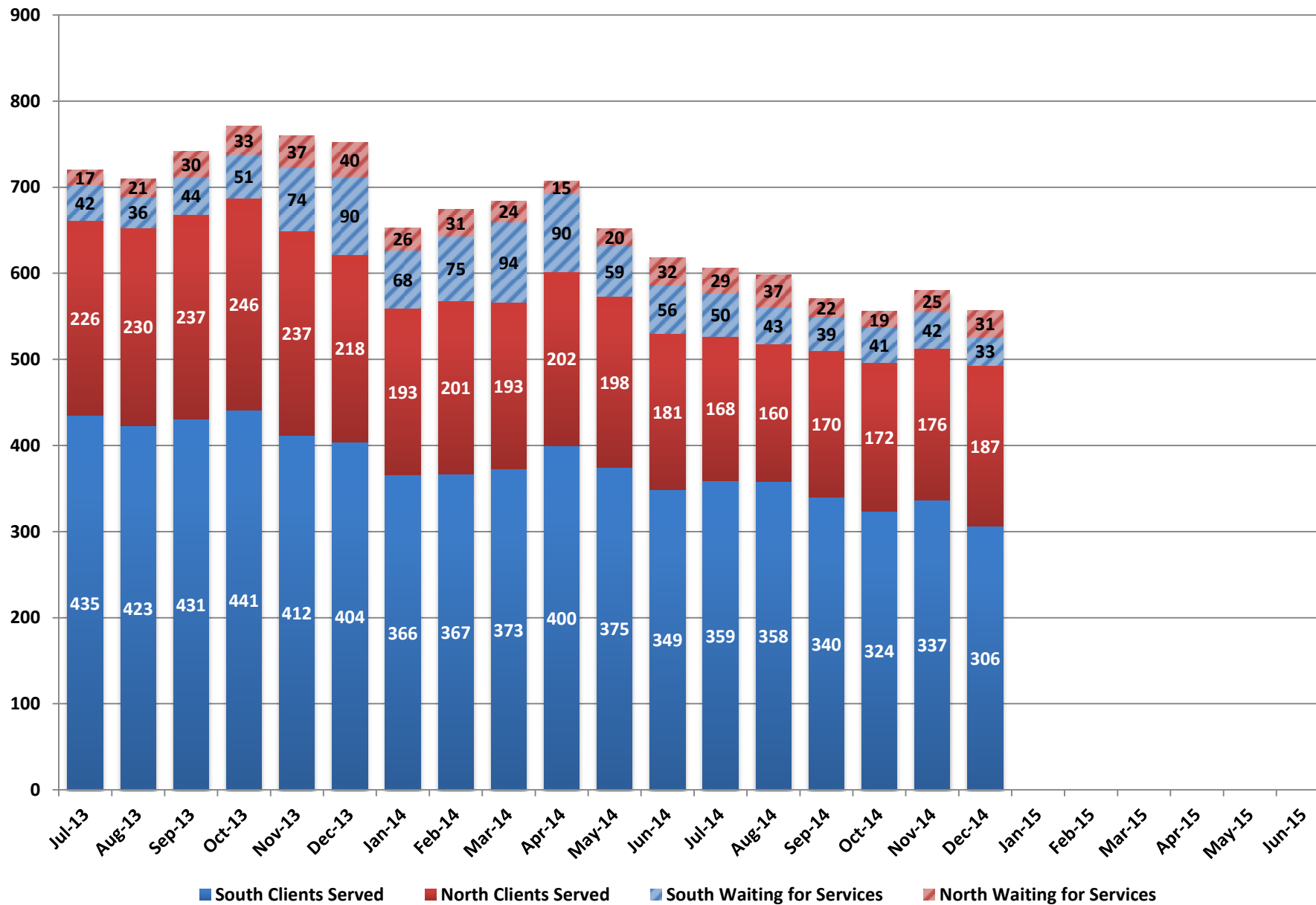
Early Childhood Mental Health Services



Early Childhood Mental Health Services

	South Clients Served	South Waiting for Services	North Clients Served	North Waiting for Services	Total Served	Total Waiting for Services
Jul-13	397	46	141	10	538	56
Aug-13	395	31	146	13	541	44
Sep-13	353	32	157	19	510	51
Oct-13	336	41	171	23	507	64
Nov-13	334	53	180	23	514	76
Dec-13	354	45	180	28	534	73
Jan-14	349	53	167	32	516	85
Feb-14	339	49	171	31	510	80
Mar-14	336	55	165	32	501	87
Apr-14	331	46	160	24	491	70
May-14	344	45	163	26	507	71
Jun-14	348	48	168	25	516	73
Jul-14	375	50	153	21	528	71
Aug-14	333	49	147	11	480	60
Sep-14	340	46	159	16	499	62
Oct-14	337	50	161	17	498	67
Nov-14	337	42	158	21	495	63
Dec-14	306	33	154	28	460	61
Jan-15						
Feb-15						
Mar-15						
Apr-15						
May-15						
Jun-15						

Children's Clinical Services/Outpatient

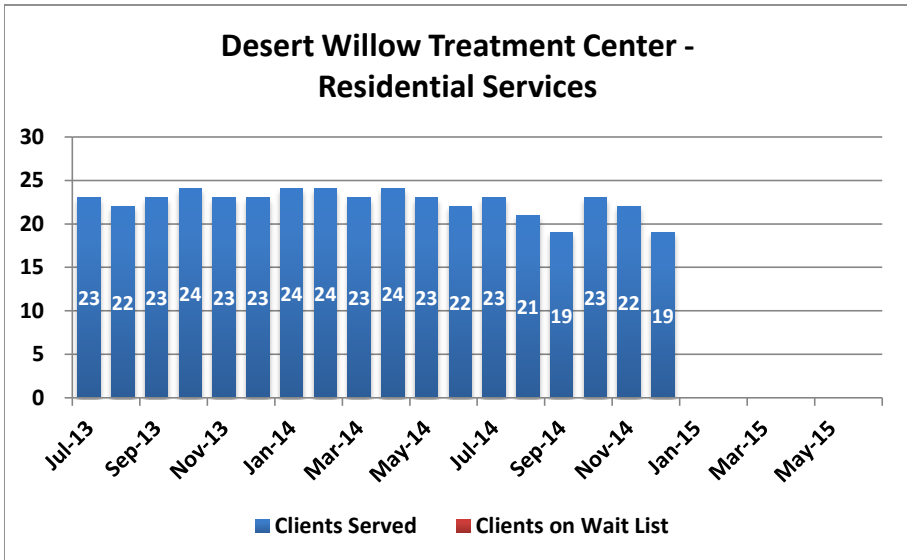
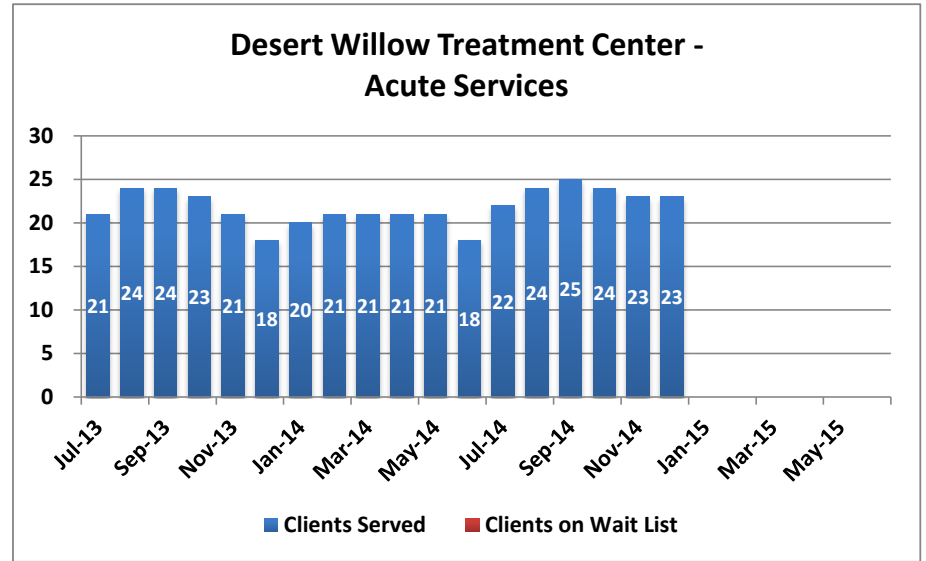
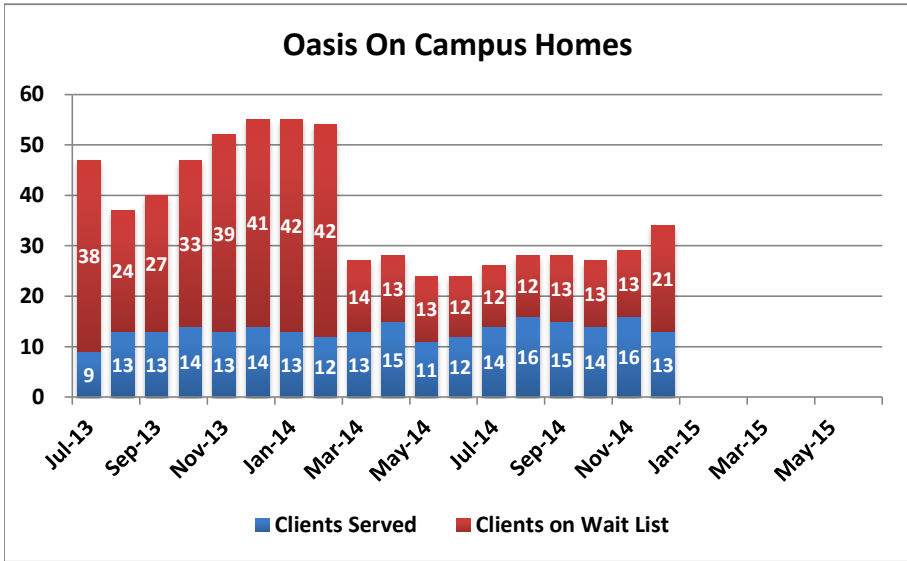


Children's Clinical Services/Outpatient

	South Clients Served	South Waiting for Services	North Clients Served	North Waiting for Services	Total Served	Total Waiting for Services
Jul-13	435	42	226	17	661	59
Aug-13	423	36	230	21	653	57
Sep-13	431	44	237	30	668	74
Oct-13	441	51	246	33	687	84
Nov-13	412	74	237	37	649	111
Dec-13	404	90	218	40	622	130
Jan-14	366	68	193	26	559	94
Feb-14	367	75	201	31	568	106
Mar-14	373	94	193	24	566	118
Apr-14	400	90	202	15	602	105
May-14	375	59	198	20	573	79
Jun-14	349	56	181	32	530	88
Jul-14	359	50	168	29	527	79
Aug-14	358	43	160	37	518	80
Sep-14	340	39	170	22	510	61
Oct-14	324	41	172	19	496	60
Nov-14	337	42	176	25	513	67
Dec-14	306	33	187	31	493	64
Jan-15						
Feb-15						
Mar-15						
Apr-15						
May-15						
Jun-15						

Note: Client's served is declining due to the number of children "rolling over" from FFS to HMO.

Children's Mental Health - South

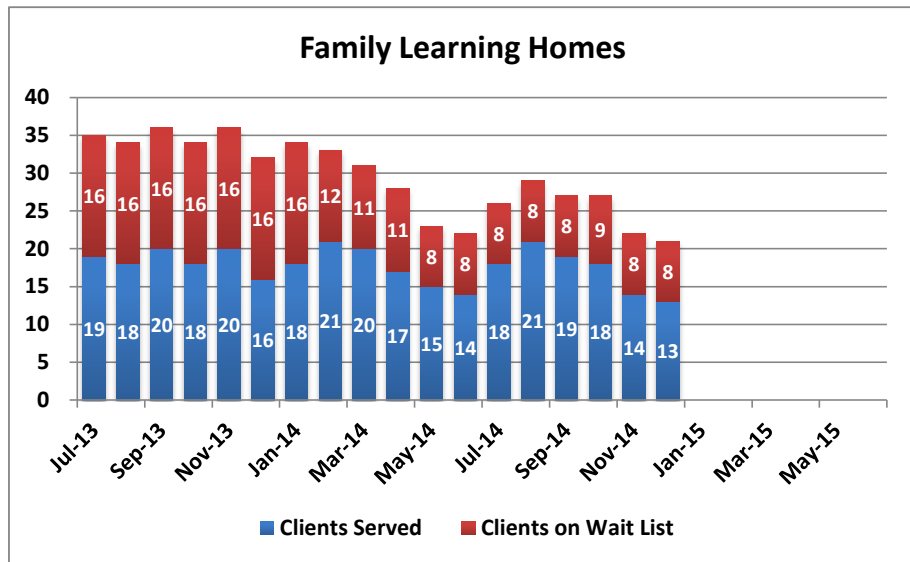
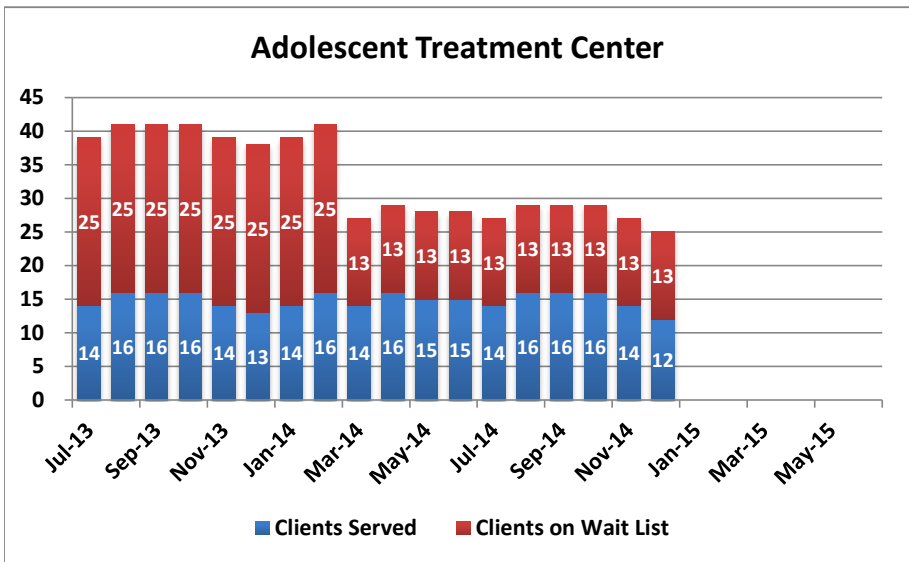


Children's Mental Health - South

	Oasis On Campus Homes			Desert Willow Treatment Center - Acute Services			Desert Willow Treatment Center - Residential Services		
	Clients Served	Clients on Wait List	Average Length of Stay	Clients Served	Clients on Wait List	Average Length of Stay	Clients Served	Clients on Wait List	Average Length of Stay
Jul-13	9	38	160	21	0	76	23	0	94
Aug-13	13	24	109	24	0	63	22	0	55
Sep-13	13	27	139	24	0	61	23	0	66
Oct-13	14	33	160	23	0	60	24	0	82
Nov-13	13	39	175	21	0	71	23	0	66
Dec-13	14	41	179	18	0	98	23	0	87
Jan-14	13	42	135	20	0	59	24	0	82
Feb-14	12	42	165	21	0	60	24	0	103
Mar-14	13	14	162	21	0	70	23	0	99
Apr-14	15	13	169	21	0	70	24	0	91
May-14	11	13	156	21	0	81	23	0	81
Jun-14	12	12	161	18	0	82	22	0	68
Jul-14	14	12	160	22	0	76	23	0	81
Aug-14	16	12	118	24	0	85	21	0	103
Sep-14	15	13	83	25	0	66	19	0	91
Oct-14	14	13	79	24	0	86	23	0	75
Nov-14	16	13	97	23	0	94	22	0	70
Dec-14	13	21	99	23	0	98	19	0	87
Jan-15									
Feb-15									
Mar-15									
Apr-15									
May-15									
Jun-15									

Note: A clean-up of the waitlist occurred in March 2014.

Children's Mental Health - North

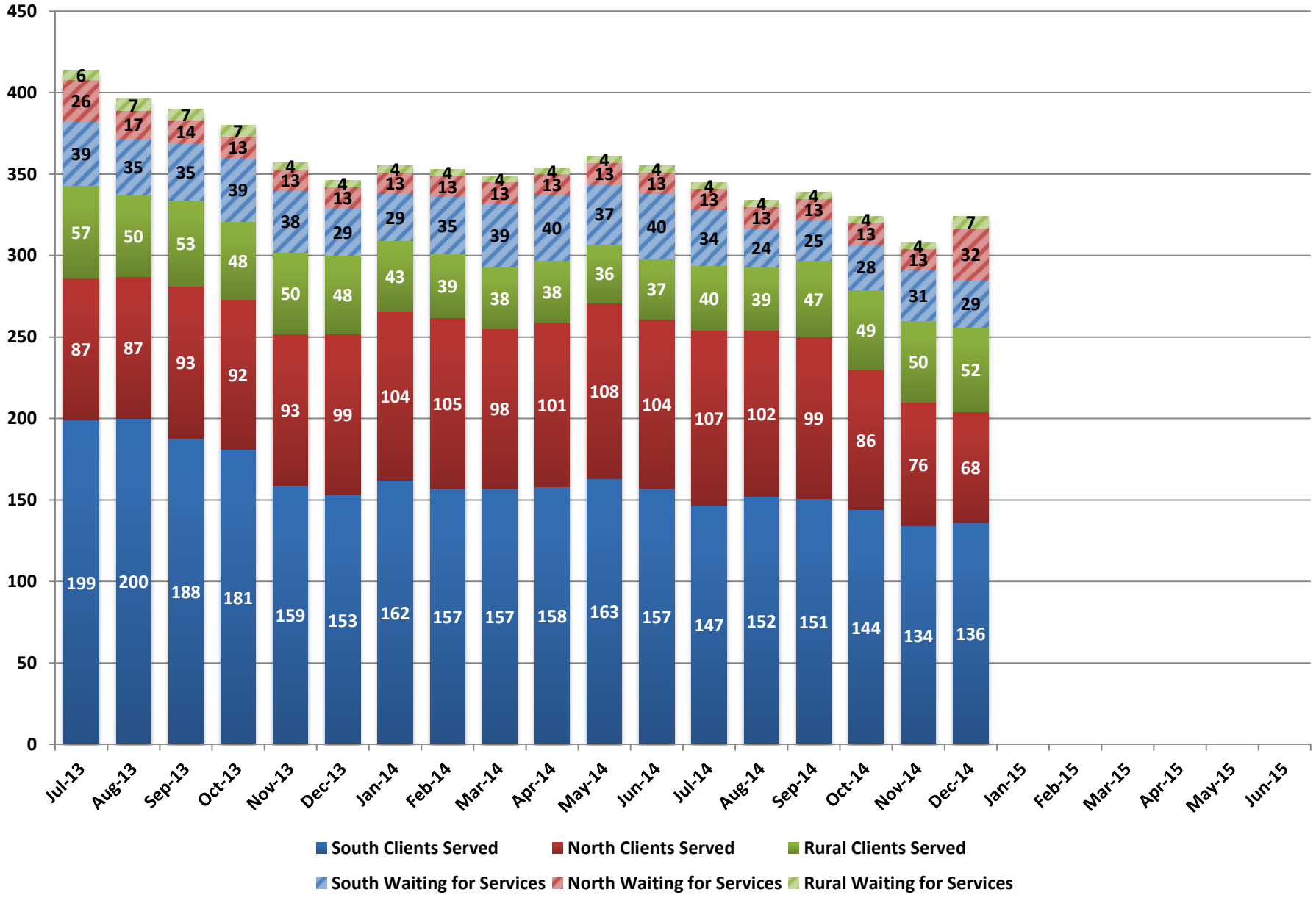


Children's Mental Health - North

	Adolescent Treatment Center			Family Learning Homes		
	Clients Served	Clients on Wait List	Average Length of Stay	Clients Served	Clients on Wait List	Average Length of Stay
Jul-13	14	25	67	19	16	85
Aug-13	16	25	62	18	16	68
Sep-13	16	25	88	20	16	88
Oct-13	16	25	86	18	16	97
Nov-13	14	25	91	20	16	99
Dec-13	13	25	98	16	16	86
Jan-14	14	25	82	18	16	68
Feb-14	16	25	98	21	12	82
Mar-14	14	13	100	20	11	107
Apr-14	16	13	83	17	11	123
May-14	15	13	97	15	8	130
Jun-14	15	13	91	14	8	106
Jul-14	14	13	88	18	8	61
Aug-14	16	13	74	21	8	61
Sep-14	16	13	104	19	8	76
Oct-14	16	13	102	18	9	105
Nov-14	14	13	122	14	8	122
Dec-14	12	13	104	13	8	104
Jan-15						
Feb-15						
Mar-15						
Apr-15						
May-15						
Jun-15						

Note: A clean-up of the waitlist occurred in March 2014.

Children's Wraparound in Nevada (WIN)



Children's Wraparound in Nevada (WIN)

	South Clients Served	South Waiting for Services	North Clients Served	North Waiting for Services	Rural Clients Served	Rural Waiting for Services	Total Served	Total Waiting for Services
Jul-13	199	39	87	26	57	6	343	71
Aug-13	200	35	87	17	50	7	337	59
Sep-13	188	35	93	14	53	7	334	56
Oct-13	181	39	92	13	48	7	321	59
Nov-13	159	38	93	13	50	4	302	55
Dec-13	153	29	99	13	48	4	300	46
Jan-14	162	29	104	13	43	4	309	46
Feb-14	157	35	105	13	39	4	301	52
Mar-14	157	39	98	13	38	4	293	56
Apr-14	158	40	101	13	38	4	297	57
May-14	163	37	108	13	36	4	307	54
Jun-14	157	40	104	13	37	4	298	57
Jul-14	147	34	107	13	40	4	294	51
Aug-14	152	24	102	13	39	4	293	41
Sep-14	151	25	99	13	47	4	297	42
Oct-14	144	28	86	13	49	4	279	45
Nov-14	134	31	76	13	50	4	260	48
Dec-14	136	29	68	32	52	7	256	68
Jan-15								
Feb-15								
Mar-15								
Apr-15								
May-15								
Jun-15								

Note: Client's served is declining due to the number of children "rolling over" from FFS to HMO.