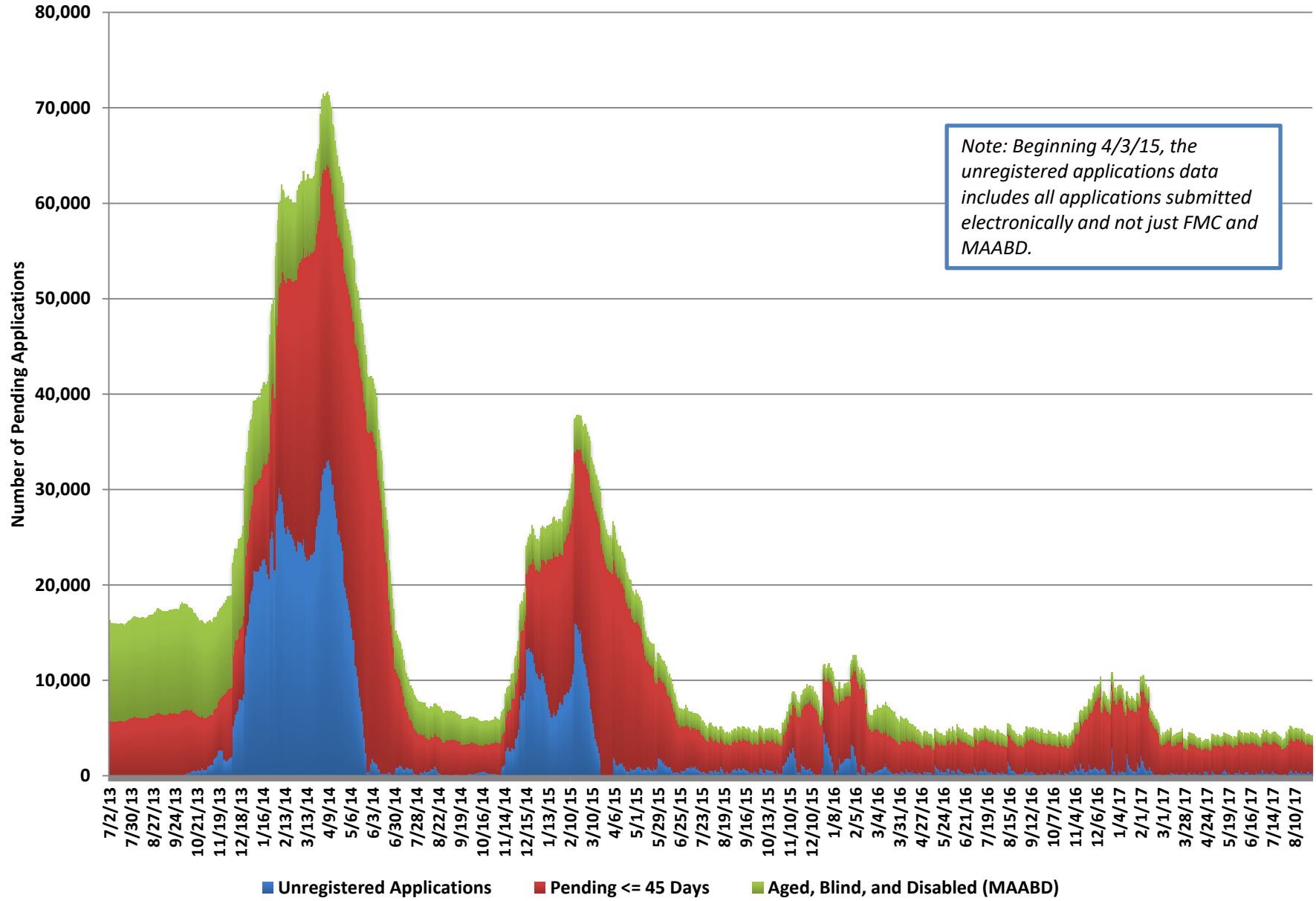


Medicaid Chart Pack

September 2017

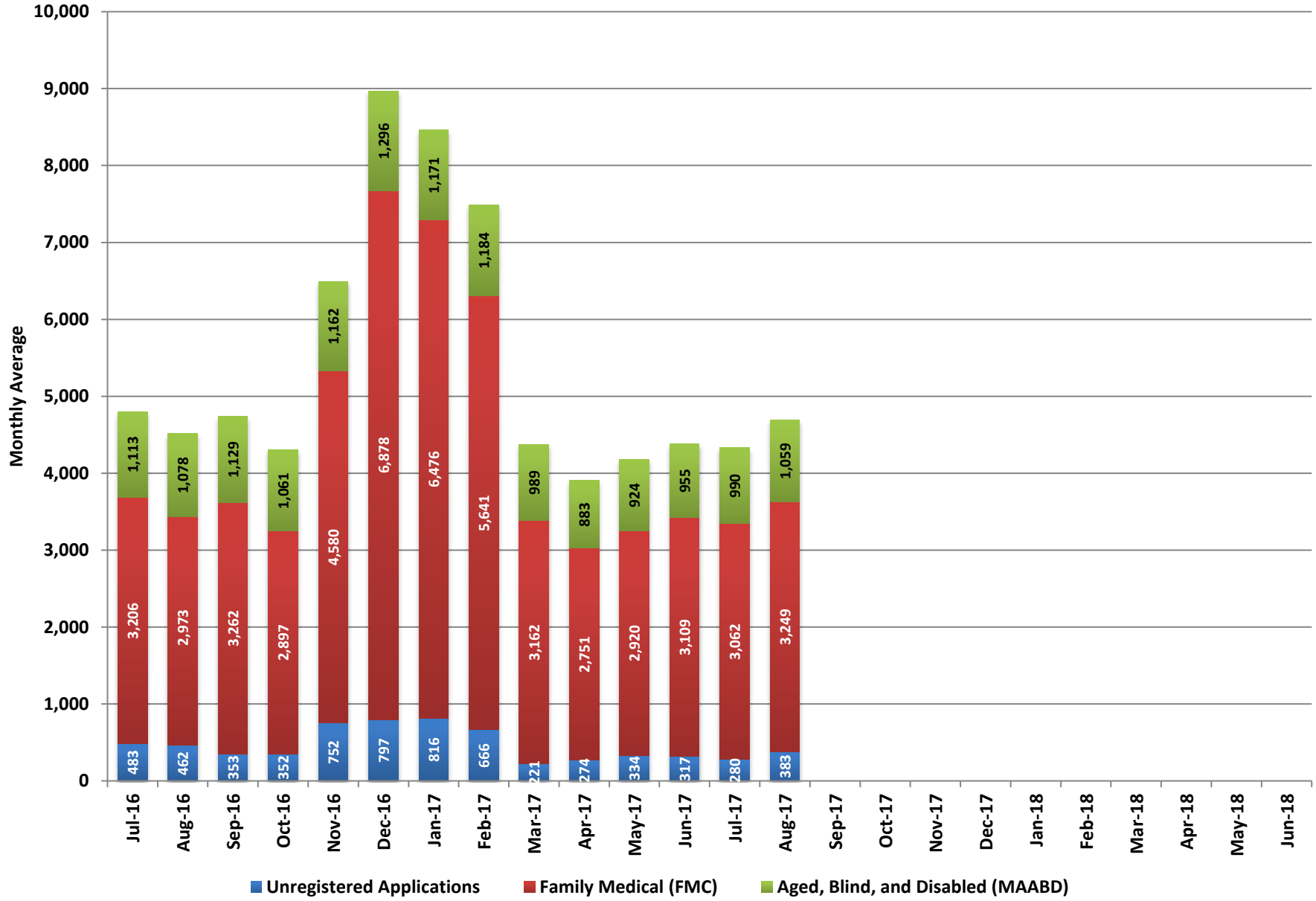
Pending Applications



Pending Applications

Date	Unregistered Applications	Family Medical (FMC)			Aged, Blind, and Disabled (MAABD)				Total Medicaid Pending Applications
		Pending <= 45 Days	Pending > 45 Days	Total Applications	Pending <= 45 Days	Pending 46-90 Days	Pending > 90 Days	Total Applications	
8/1/17	372	3,009	29	3,038	1,074	79	59	1,212	4,622
8/2/17	93	3,043	28	3,071	1,044	66	55	1,165	4,329
8/3/17	390	3,213	31	3,244	1,047	62	55	1,164	4,798
8/4/17	719	3,316	31	3,347	1,046	65	54	1,165	5,231
8/7/17	640	3,345	31	3,376	1,029	71	54	1,154	5,170
8/8/17	444	3,343	33	3,376	1,065	66	52	1,183	5,003
8/9/17	348	3,317	35	3,352	1,027	59	54	1,140	4,840
8/10/17	240	3,355	30	3,385	1,017	59	52	1,128	4,753
8/11/17	551	3,296	30	3,326	1,003	58	53	1,114	4,991
8/14/17	603	3,282	29	3,311	973	71	53	1,097	5,011
8/15/17	341	3,447	26	3,473	972	72	55	1,099	4,913
8/16/17	350	3,388	59	3,447	945	78	56	1,079	4,876
8/17/17	256	3,308	58	3,366	953	76	55	1,084	4,706
8/18/17	516	3,325	58	3,383	913	69	52	1,034	4,933
8/21/17	328	3,409	54	3,463	893	72	49	1,014	4,805
8/22/17	229	3,313	58	3,371	877	63	49	989	4,589
8/23/17	252	3,207	60	3,267	858	59	50	967	4,486
8/24/17	220	3,006	58	3,064	826	56	51	933	4,217
8/25/17	522	2,892	59	2,951	811	55	51	917	4,390
8/28/17	469	2,933	62	2,995	824	56	49	929	4,393
8/29/17	379	3,025	66	3,091	815	58	50	923	4,393
8/30/17	241	2,981	61	3,042	838	55	52	945	4,228
8/31/17	295	2,921	63	2,984	811	53	52	916	4,195

Pending Applications (Monthly Average)



**Pending Applications
(Monthly Averages)**

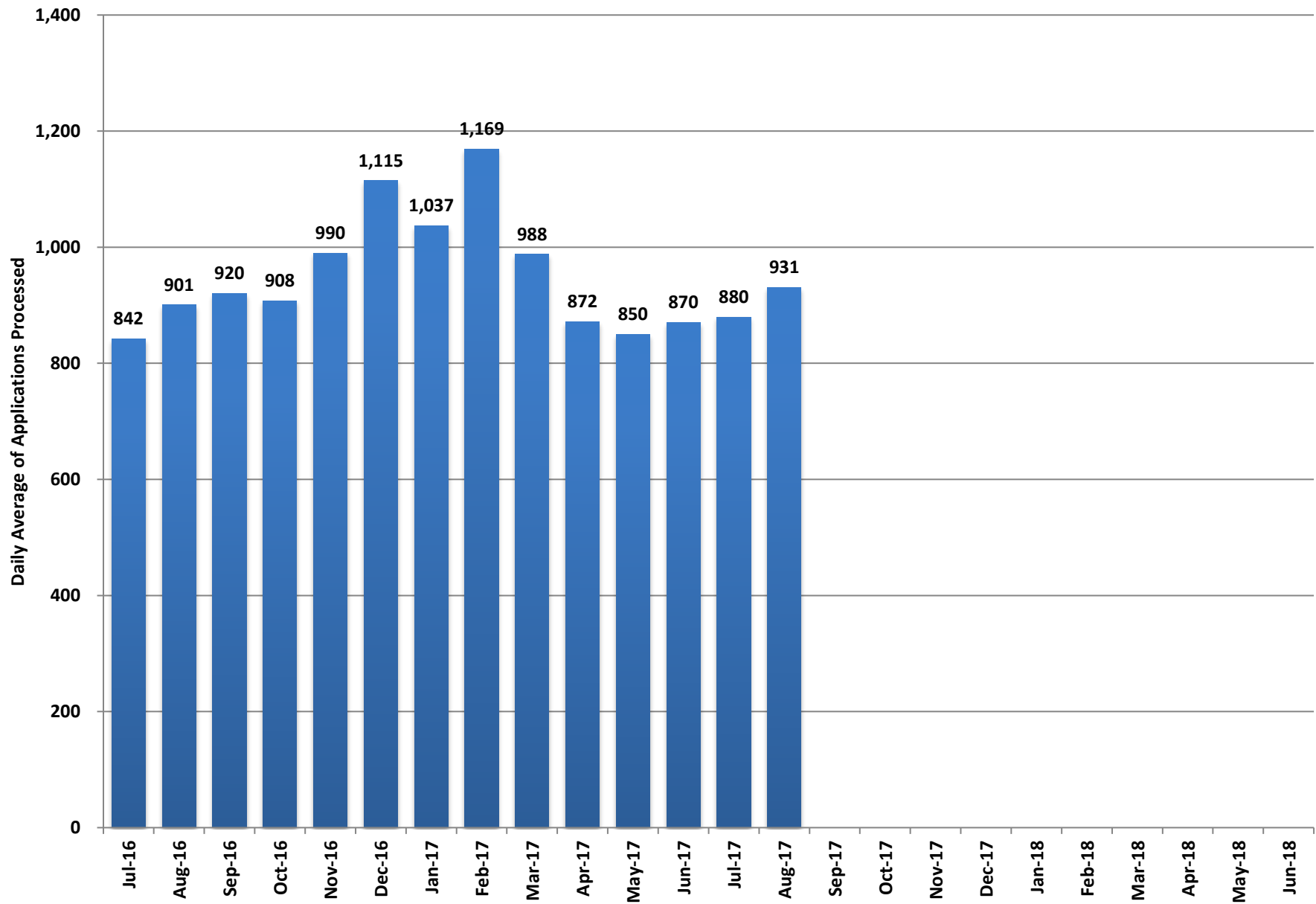
Month	Unregistered Applications	Family Medical (FMC)			Aged, Blind, and Disabled (MAABD)				Total Medicaid Pending Applications
		Pending <= 45 Days	Pending > 45 Days	Total Applications	Pending <= 45 Days	Pending 46-90 Days	Pending > 90 Days	Total Applications	
Jul-16	483	3,184	22	3,206	934	95	83	1,113	4,802
Aug-16	462	2,956	18	2,973	913	99	67	1,078	4,514
Sep-16	353	3,245	17	3,262	960	104	65	1,129	4,743
Oct-16	352	2,877	21	2,897	908	92	61	1,061	4,309
Nov-16	752	4,555	24	4,580	1,007	95	60	1,162	6,493
Dec-16	797	6,850	28	6,878	1,136	92	67	1,296	8,971
Jan-17	816	6,433	43	6,476	1,002	105	64	1,171	8,463
Feb-17	666	5,604	37	5,641	1,052	78	54	1,184	7,491
Mar-17	221	3,132	30	3,162	876	69	44	989	4,372
Apr-17	274	2,729	21	2,751	794	54	34	883	3,907
May-17	334	2,900	21	2,920	828	61	35	924	4,178
Jun-17	317	3,069	41	3,109	849	69	37	955	4,382
Jul-17	280	3,013	49	3,062	865	81	44	990	4,333
Aug-17	383	3,203	46	3,249	942	64	53	1,059	4,690
Sep-17									
Oct-17									
Nov-17									
Dec-17									
Jan-18									
Feb-18									
Mar-18									
Apr-18									
May-18									
Jun-18									

Fiscal Year Averages

Fiscal Year	Unregistered Applications	Family Medical (FMC)			Aged, Blind, and Disabled (MAABD)				Total Medicaid Pending Applications
		Pending <= 45 Days	Pending > 45 Days	Total Applications	Pending <= 45 Days	Pending 46-90 Days	Pending > 90 Days	Total Applications	
FY14	13,681	7,925	8,462	16,387	2,094	1,197	5,355	8,646	35,324
FY15	3,376	6,810	3,357	10,167	1,369	498	1,129	2,997	16,405
FY16	797	4,150	28	4,178	974	162	271	1,407	6,382
FY17	486	3,961	27	3,988	938	84	56	1,079	5,552
FY18 YTD	331	3,108	47	3,156	903	73	48	1,024	4,511

Note: Beginning 4/3/15, the unregistered applications data includes all applications submitted electronically and not just FMC and MAABD.

Medicaid Applications Processed per Working Day

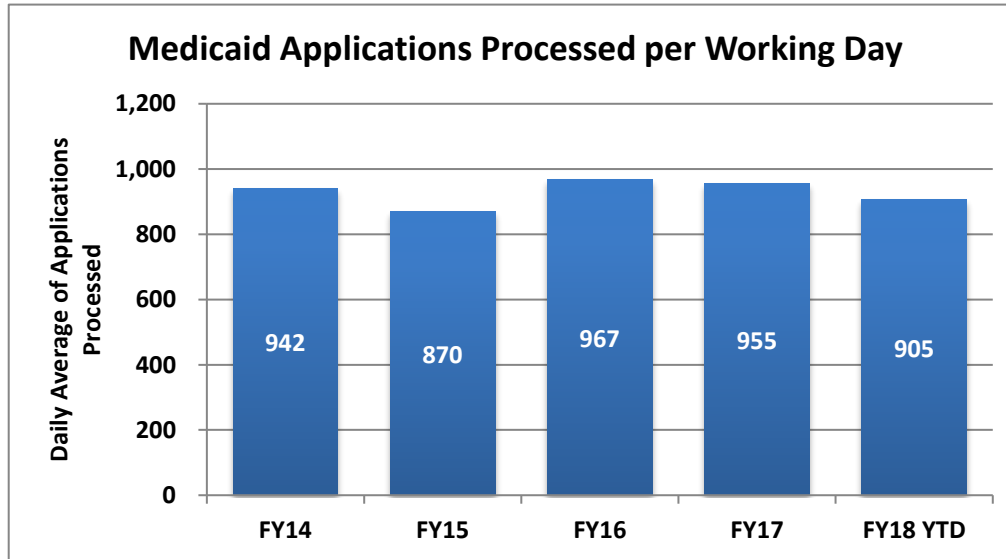


Pending Applications Processed per Day

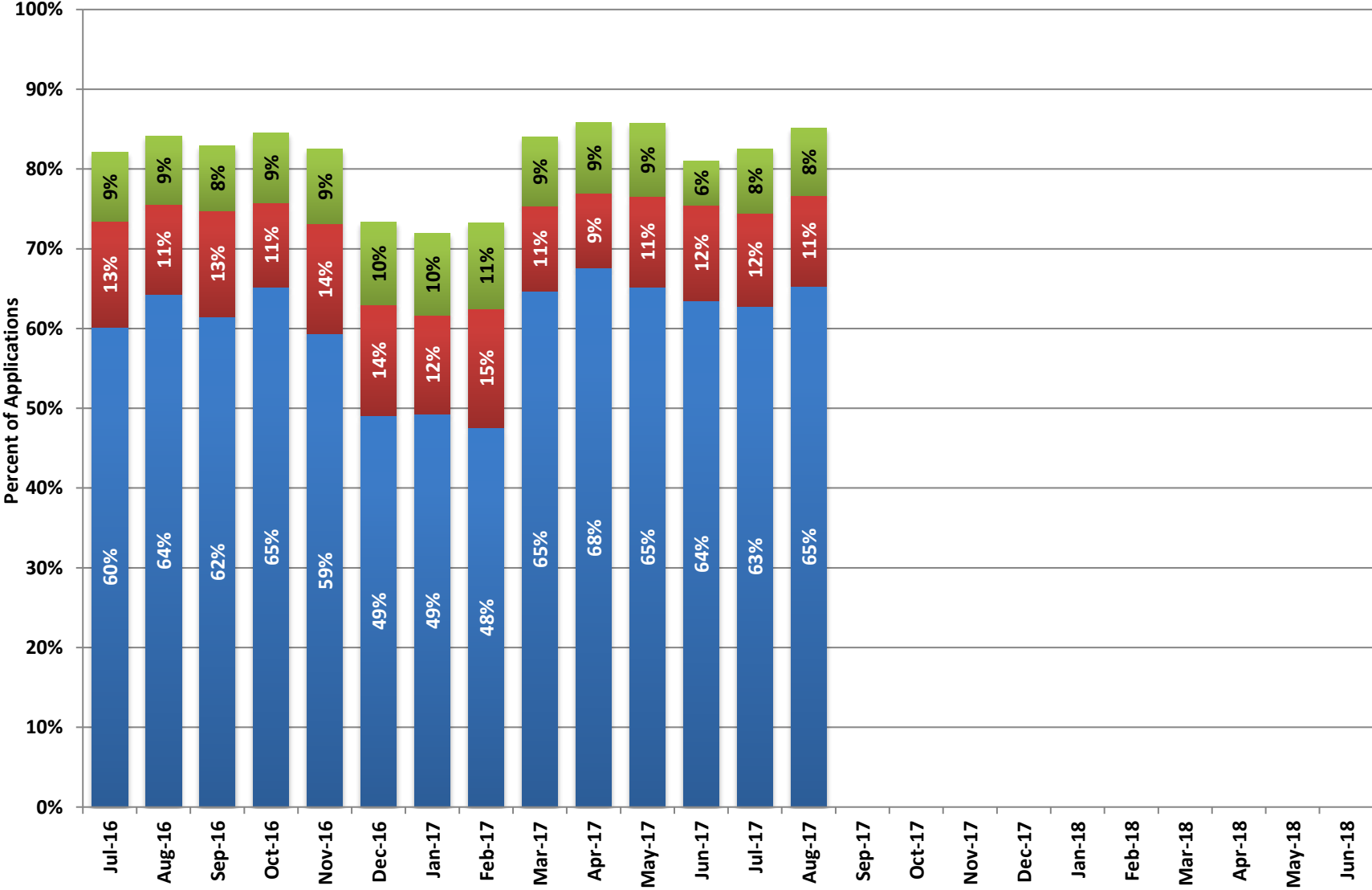
Month	Medicaid Applications Processed per Working Day
Jul-16	842
Aug-16	901
Sep-16	920
Oct-16	908
Nov-16	990
Dec-16	1,115
Jan-17	1,037
Feb-17	1,169
Mar-17	988
Apr-17	872
May-17	850
Jun-17	870
Jul-17	880
Aug-17	931
Sep-17	
Oct-17	
Nov-17	
Dec-17	
Jan-18	
Feb-18	
Mar-18	
Apr-18	
May-18	
Jun-18	

Fiscal Year Averages

Fiscal Year	Medicaid Applications Processed per Working Day
FY14	942
FY15	870
FY16	967
FY17	955
FY18 YTD	905



Applications Processed within 15 Days



■ Percent of Applications Processed within 5 Days ■ Percent of Applications Processed in 6 - 10 Days ■ Percent of Applications Processed in 11 - 15 Days

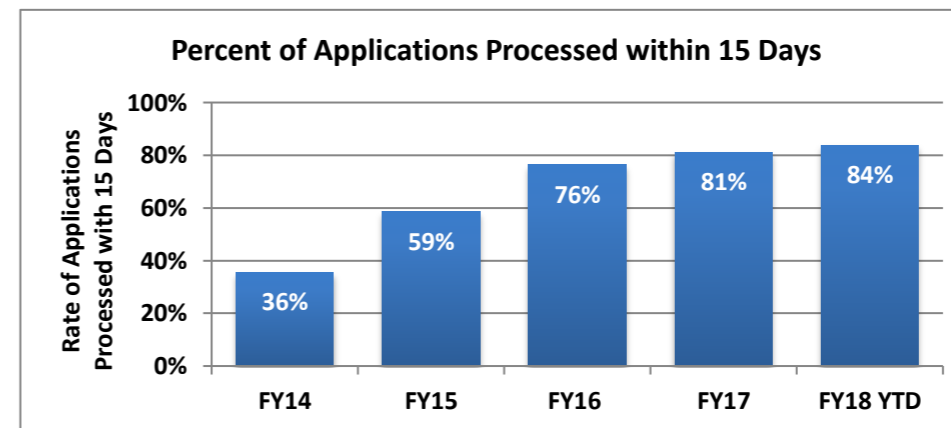
Applications Processed within 15 Days

Month	Applications Processed within 5 Days	Percent of Applications Processed within 5 Days	Applications Processed in 6 - 10 Days	Percent of Applications Processed in 6 - 10 Days	Applications Processed in 11 - 15 Days	Percent of Applications Processed in 11 - 15 Days	Applications Processed within 15 Days	Total Applications Processed	Percent of Applications Processed within 15 Days
Jul-16	10,137	60%	2,220	13%	1,470	9%	13,827	16,838	82%
Aug-16	13,313	64%	2,349	11%	1,761	9%	17,423	20,715	84%
Sep-16	11,873	62%	2,562	13%	1,572	8%	16,007	19,319	83%
Oct-16	11,838	65%	1,925	11%	1,579	9%	15,342	18,162	84%
Nov-16	11,164	59%	2,590	14%	1,771	9%	15,525	18,819	82%
Dec-16	11,488	49%	3,241	14%	2,401	10%	17,130	23,379	73%
Jan-17	11,960	49%	3,016	12%	2,479	10%	17,455	24,268	72%
Feb-17	10,580	48%	3,309	15%	2,384	11%	16,273	22,212	73%
Mar-17	12,781	65%	2,108	11%	1,706	9%	16,595	19,745	84%
Apr-17	11,790	68%	1,639	9%	1,534	9%	14,963	17,436	86%
May-17	12,188	65%	2,124	11%	1,710	9%	16,022	18,689	86%
Jun-17	12,161	64%	2,301	12%	1,628	6%	16,090	19,147	84%
Jul-17	11,055	63%	2,065	12%	1,407	8%	14,527	17,594	83%
Aug-17	13,970	65%	2,438	11%	1,800	8%	18,208	21,403	85%
Sep-17									
Oct-17									
Nov-17									
Dec-17									
Jan-18									
Feb-18									
Mar-18									
Apr-18									
May-18									
Jun-18									

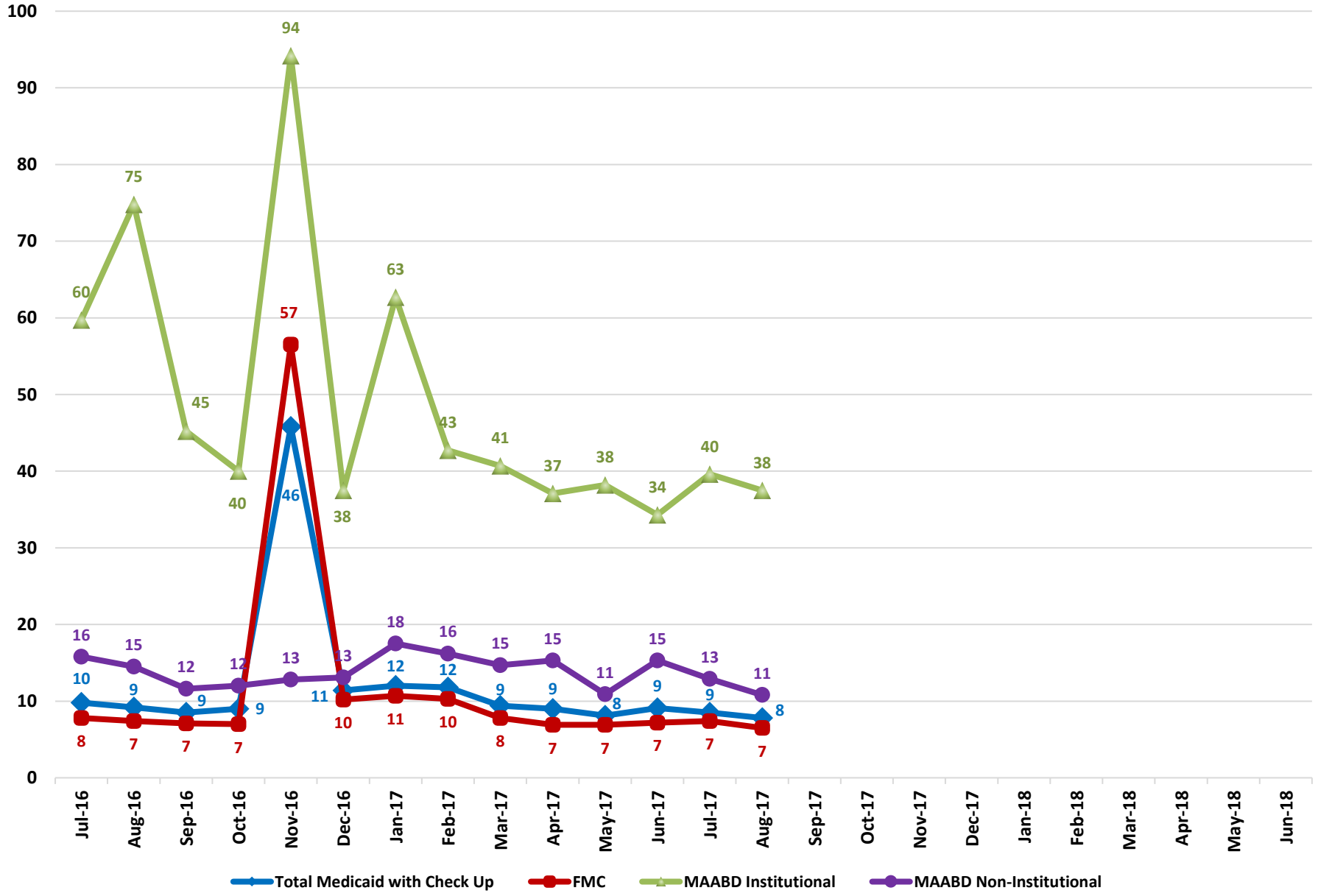
Note: This data reflects Family Medical (FMC), Newly Eligible Adults, Aged, Blind and Disabled (MAABD), and Nevada Check Up applications.

Percent of Applications Processed within 15 Days - Fiscal Year Averages

Fiscal Year	% within 15 Days
FY14	36%
FY15	59%
FY16	76%
FY17	81%
FY18 YTD	84%



Average Processing Time (Days)



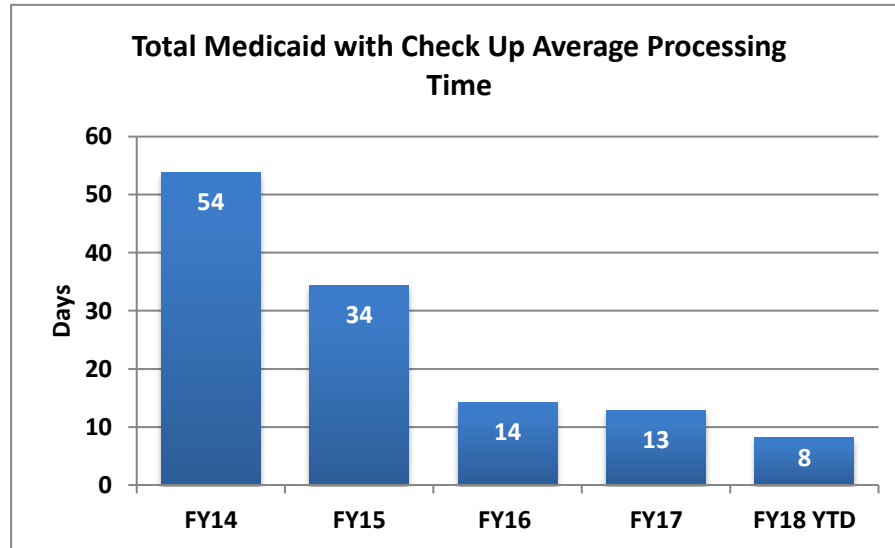
Average Processing Time (Days)

Month	Total Medicaid with Check Up	FMC	MAABD Institutional	MAABD Non-Institutional
Jul-16	10	8	60	16
Aug-16	9	7	75	15
Sep-16	9	7	45	12
Oct-16	9	7	40	12
Nov-16	46	57	94	13
Dec-16	11	10	38	13
Jan-17	12	11	63	18
Feb-17	12	10	43	16
Mar-17	9	8	41	15
Apr-17	9	7	37	15
May-17	8	7	38	11
Jun-17	9	7	34	15
Jul-17	9	7	40	13
Aug-17	8	7	38	11
Sep-17				
Oct-17				
Nov-17				
Dec-17				
Jan-18				
Feb-18				
Mar-18				
Apr-18				
May-18				
Jun-18				

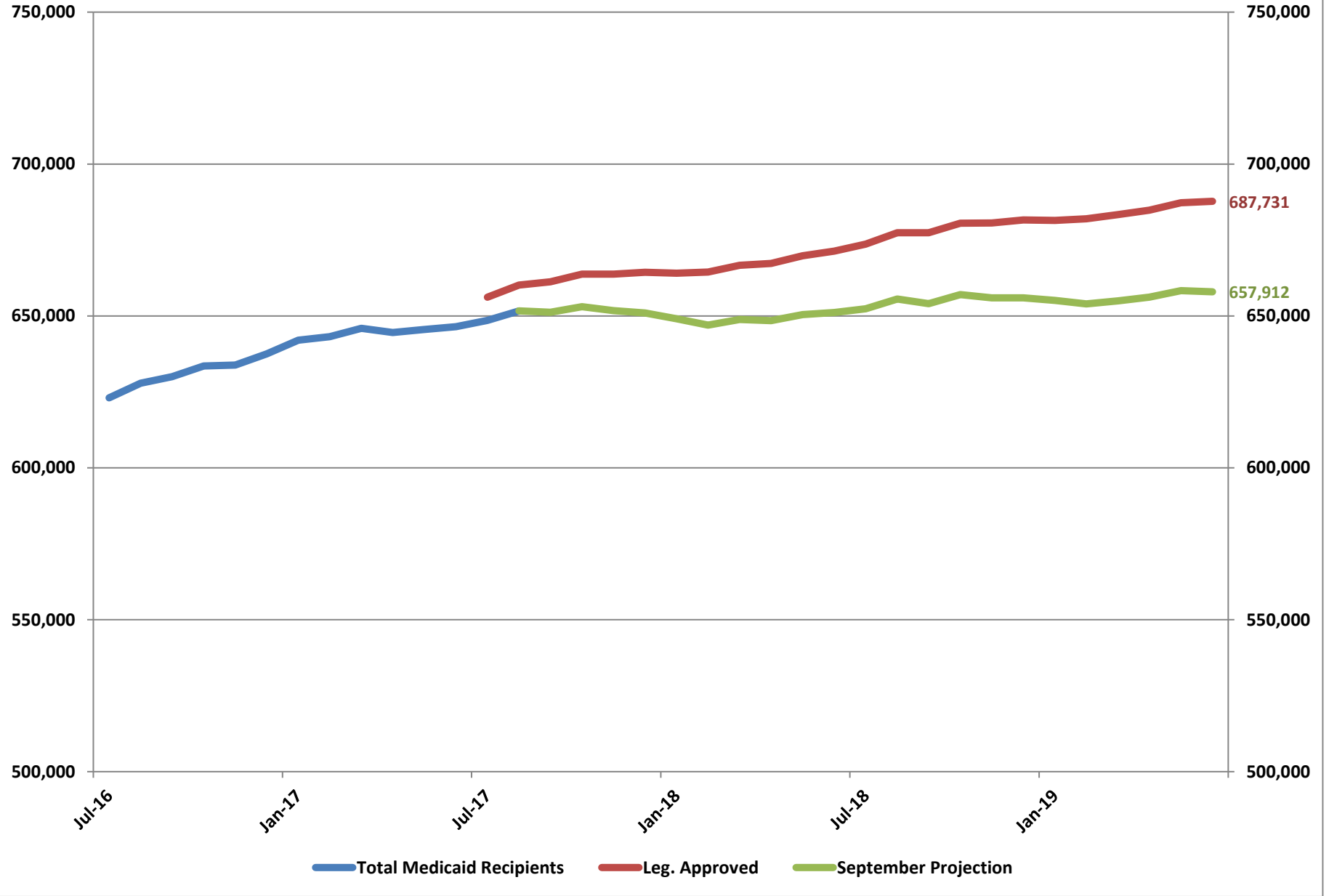
Note: Processing times are higher in November due to a technical error.

Fiscal Year Averages

Fiscal Year	Total Medicaid with Check Up	FMC	MAABD Institutional	MAABD Non-Institutional
FY14	54			
FY15	34	22	69	45
FY16	14	10	63	30
FY17	13	12	51	14
FY18 YTD	8	7	39	12



Total Medicaid Recipients



Total Medicaid Recipients

FY16 & FY17 Biennium

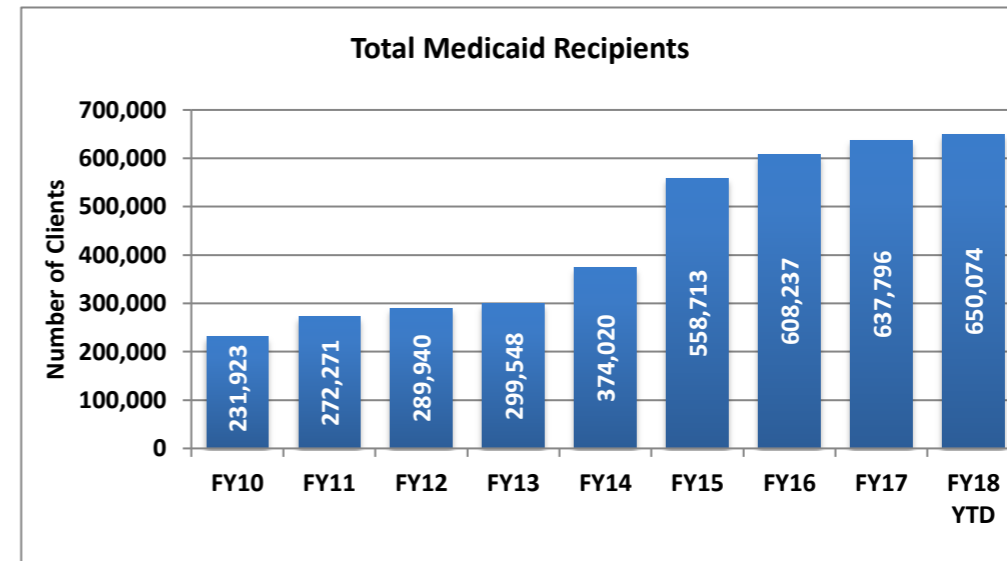
Month	Total Medicaid Recipients
Jul-15	582,531
Aug-15	586,654
Sep-15	594,359
Oct-15	599,701
Nov-15	602,421
Dec-15	608,812
Jan-16	614,216
Feb-16	620,541
Mar-16	623,109
Apr-16	621,250
May-16	622,259
Jun-16	622,986
Jul-16	623,002
Aug-16	627,802
Sep-16	629,956
Oct-16	633,535
Nov-16	634,037
Dec-16	637,501
Jan-17	642,028
Feb-17	643,194
Mar-17	645,963
Apr-17	644,535
May-17	645,540
Jun-17	646,464

FY18 & FY19 Biennium

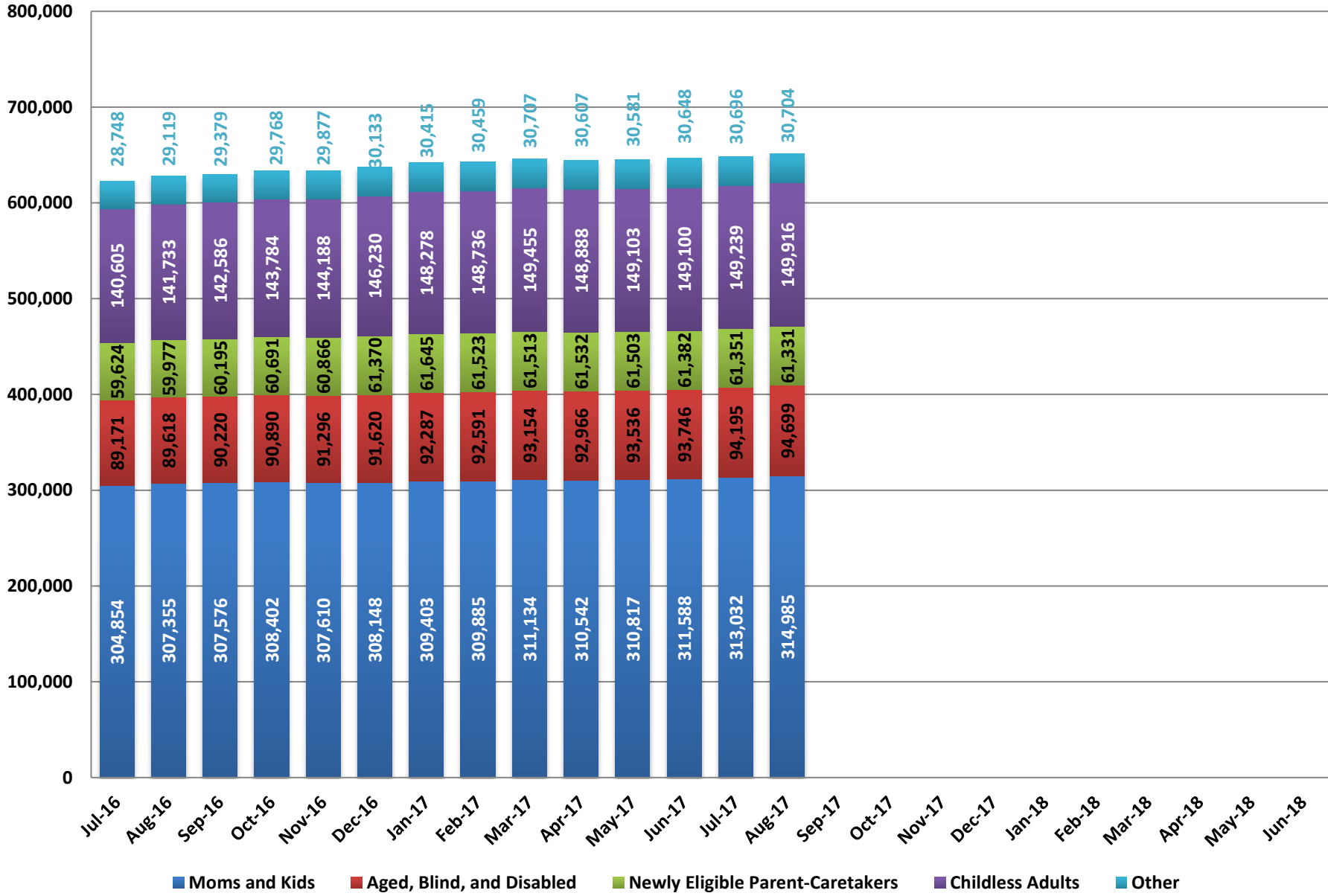
Month	Total Medicaid Recipients	Leg. Approved	September Projection
Jul-17	648,513	656,163	
Aug-17	651,635	660,148	651,635
Sep-17		661,255	651,243
Oct-17		663,747	653,036
Nov-17		663,722	651,778
Dec-17		664,345	650,987
Jan-18		664,076	649,081
Feb-18		664,436	646,977
Mar-18		666,637	648,825
Apr-18		667,258	648,432
May-18		669,834	650,410
Jun-18		671,362	651,135
Jul-18		673,606	652,392
Aug-18		677,370	655,581
Sep-18		677,385	654,015
Oct-18		680,535	657,034
Nov-18		680,603	655,978
Dec-18		681,627	655,928
Jan-19		681,422	655,092
Feb-19		681,965	653,993
Mar-19		683,378	654,966
Apr-19		684,779	656,213
May-19		687,226	658,328
Jun-19		687,731	657,912

Fiscal Year Averages

Fiscal Year	Total Medicaid Recipients	Percent Change
FY10	231,923	
FY11	272,271	17.4%
FY12	289,940	6.5%
FY13	299,548	3.3%
FY14	374,020	24.9%
FY15	558,713	49.4%
FY16	608,237	8.9%
FY17	637,796	4.9%
FY18 YTD	650,074	1.9%



Medicaid Caseloads by Category



Medicaid Caseloads

Caseload by Month

Month	Moms and Kids	Aged, Blind, and Disabled	Newly Eligible Parent-Caretakers	Childless Adults	Other	Total
Jul-15	291,099	83,257	55,059	126,879	26,176	582,470
Aug-15	293,055	83,555	55,654	127,784	26,553	586,601
Sep-15	296,649	83,977	56,697	130,095	26,888	594,306
Oct-15	298,503	84,523	57,336	131,980	27,308	599,650
Nov-15	298,363	84,610	57,757	134,198	27,442	602,370
Dec-15	299,645	85,227	58,416	137,715	27,742	608,745
Jan-16	300,374	85,728	59,057	140,180	28,819	614,158
Feb-16	302,078	86,430	59,618	143,357	29,008	620,491
Mar-16	303,352	87,368	59,960	143,635	28,764	623,079
Apr-16	302,604	87,976	59,766	142,348	28,493	621,187
May-16	303,235	88,510	59,971	141,952	28,523	622,191
Jun-16	304,307	88,660	60,114	141,128	28,731	622,940
Jul-16	304,854	89,171	59,624	140,605	28,748	623,002
Aug-16	307,355	89,618	59,977	141,733	29,119	627,802
Sep-16	307,576	90,220	60,195	142,586	29,379	629,956
Oct-16	308,402	90,890	60,691	143,784	29,768	633,535
Nov-16	307,610	91,296	60,866	144,188	29,877	633,837
Dec-16	308,148	91,620	61,370	146,230	30,133	637,501
Jan-17	309,403	92,287	61,645	148,278	30,415	642,028
Feb-17	309,885	92,591	61,523	148,736	30,459	643,194
Mar-17	311,134	93,154	61,513	149,455	30,707	645,963
Apr-17	310,542	92,966	61,532	148,888	30,607	644,535
May-17	310,817	93,536	61,503	149,103	30,581	645,540
Jun-17	311,588	93,746	61,382	149,100	30,648	646,464
Jul-17	313,032	94,195	61,351	149,239	30,696	648,513
Aug-17	314,985	94,699	61,331	149,916	30,704	651,635
Sep-17						
Oct-17						
Nov-17						
Dec-17						
Jan-18						
Feb-18						
Mar-18						
Apr-18						
May-18						
Jun-18						

Month over Month Change in Caseload

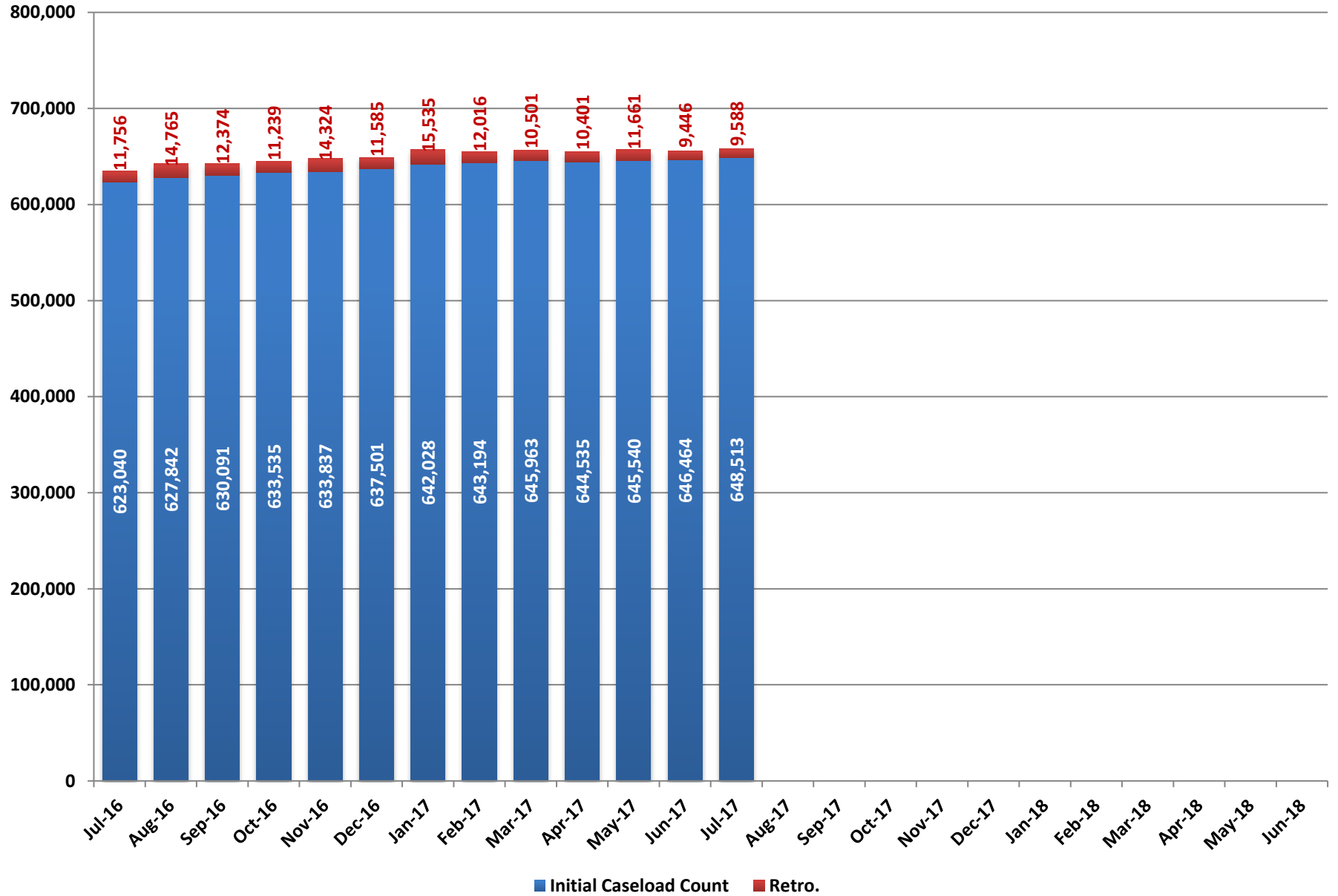
Month	Moms and Kids	Aged, Blind, and Disabled	Newly Eligible Parent-Caretakers	Childless Adults	Other	Total
Jul-15	4,082	265	639	710	354	6,050
Aug-15	1,956	298	595	905	377	4,131
Sep-15	3,594	422	1,043	2,311	335	7,705
Oct-15	1,854	546	639	1,885	420	5,344
Nov-15	(140)	87	421	2,218	134	2,720
Dec-15	1,282	617	659	3,517	300	6,375
Jan-16	729	501	641	2,465	1,077	5,413
Feb-16	1,704	702	561	3,177	189	6,333
Mar-16	1,274	938	342	278	(244)	2,588
Apr-16	(748)	608	(194)	(1,287)	(271)	(1,892)
May-16	631	534	205	(396)	30	1,004
Jun-16	1,072	150	143	(824)	208	749
Jul-16	547	511	(490)	(523)	17	62
Aug-16	2,501	447	353	1,128	371	4,800
Sep-16	221	602	218	853	260	2,154
Oct-16	826	670	496	1,198	389	3,579
Nov-16	(792)	406	175	404	109	302
Dec-16	538	324	504	2,042	256	3,664
Jan-17	1,255	667	275	2,048	282	4,527
Feb-17	482	304	(122)	458	44	1,166
Mar-17	1,249	563	(10)	719	248	2,769
Apr-17	(592)	(188)	19	(567)	(100)	(1,428)
May-17	275	570	(29)	215	(26)	1,005
Jun-17	771	210	(121)	(3)	67	924
Jul-17	1,444	449	(31)	139	48	2,049
Aug-17	1,953	504	(20)	677	8	3,122
Sep-17						
Oct-17						
Nov-17						
Dec-17						
Jan-18						
Feb-18						
Mar-18						
Apr-18						
May-18						
Jun-18						

Fiscal Year Average Caseload

Fiscal Year	Moms and Kids	Aged, Blind, and Disabled	Newly Eligible Parent-Caretakers	Childless Adults	Other	Total
FY13	218,262	67,854			13,312	299,428
FY14	247,913	72,442	11,353	25,852	16,470	374,031
FY15	291,013	79,931	47,528	116,729	23,526	558,726
FY16	299,439	85,818	58,284	136,771	27,871	608,182
FY17	308,943	91,758	60,985	146,057	30,036	637,779
FY18 YTD	314,009	94,447	61,341	149,578	30,700	650,074

Note: Other includes Child Welfare, County Match, Waivers, CHIP to Medicaid, and other minor caseloads.

Total Medicaid - Initial and Retroactive Caseload Counts



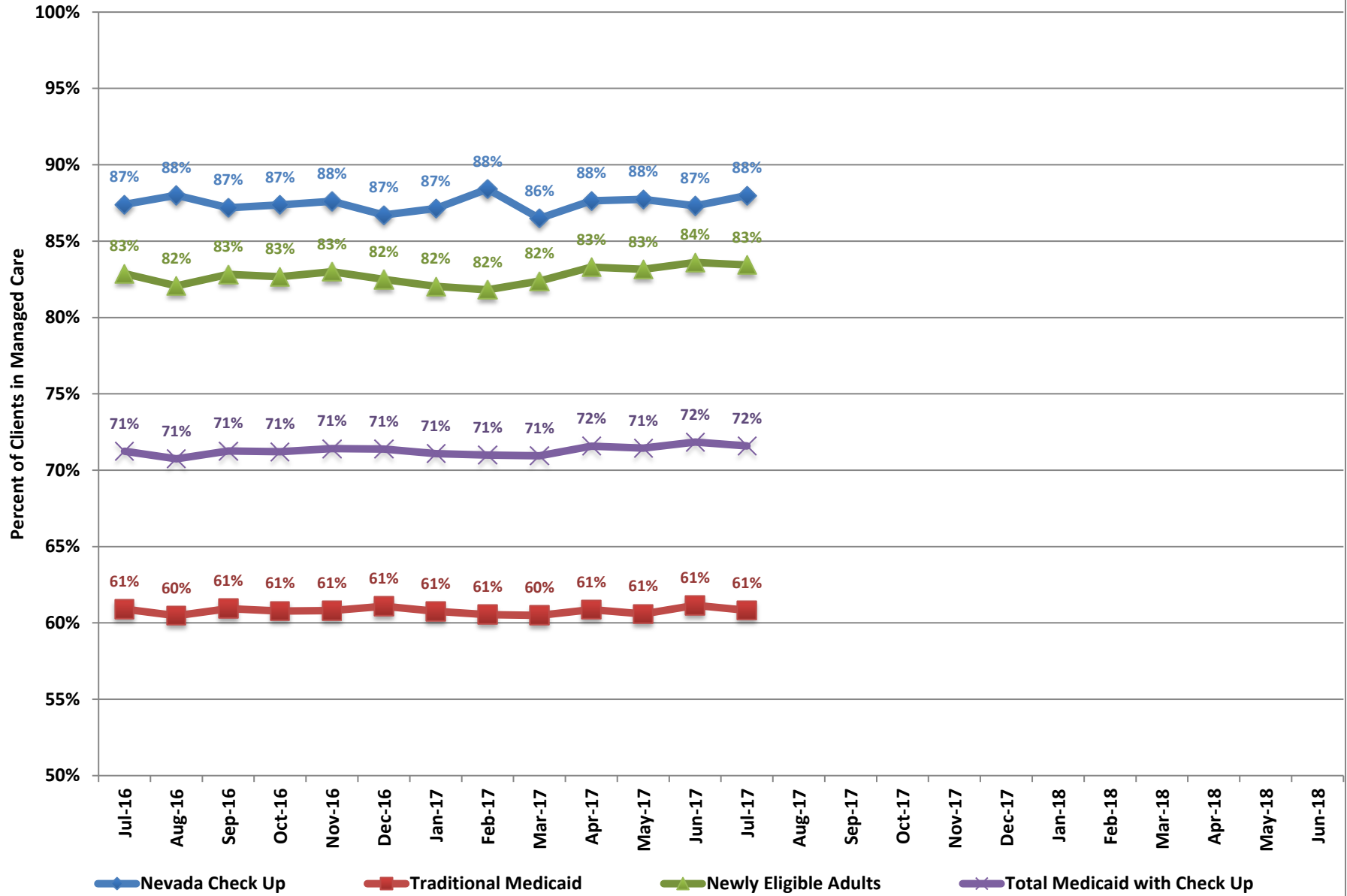
Total Medicaid - Initial and Retroactive Caseload Counts

	FMC				Aged				Blind and Disabled				Total MAABD				Total Medicaid			
	Initial Caseload Count	Retro.	Caseload with Retro.	% Retro.	Initial Caseload Count	Retro.	Caseload with Retro.	% Retro.	Initial Caseload Count	Retro.	Caseload with Retro.	% Retro.	Initial Caseload Count	Retro.	Caseload with Retro.	% Retro.	Initial Caseload Count	Retro.	Caseload with Retro.	% Retro.
Jul-16	517,610	10,559	528,169	2.0%	12,473	226	12,699	1.8%	40,831	332	41,163	0.8%	95,194	1,108	96,302	1.2%	623,040	11,756	634,796	1.9%
Aug-16	521,356	13,371	534,727	2.6%	12,618	227	12,845	1.8%	40,852	441	41,293	1.1%	95,688	1,277	96,965	1.3%	627,842	14,765	642,607	2.4%
Sep-16	522,819	11,249	534,068	2.2%	12,645	187	12,832	1.5%	41,085	334	41,419	0.8%	96,306	1,012	97,318	1.1%	630,091	12,374	642,465	2.0%
Oct-16	525,674	10,021	535,695	1.9%	12,682	196	12,878	1.5%	41,292	346	41,638	0.8%	97,092	1,104	98,196	1.1%	633,535	11,239	644,774	1.8%
Nov-16	525,596	13,189	538,785	2.5%	12,692	144	12,836	1.1%	41,471	371	41,842	0.9%	97,365	1,028	98,393	1.1%	633,837	14,324	648,161	2.3%
Dec-16	528,849	10,720	539,569	2.0%	12,648	136	12,784	1.1%	41,606	259	41,865	0.6%	97,921	748	98,669	0.8%	637,501	11,585	649,086	1.8%
Jan-17	532,720	14,399	547,119	2.7%	12,701	219	12,920	1.7%	41,822	346	42,168	0.8%	98,424	1,022	99,446	1.0%	642,028	15,535	657,563	2.4%
Feb-17	533,538	10,990	544,528	2.1%	12,728	137	12,865	1.1%	41,922	310	42,232	0.7%	98,711	903	99,614	0.9%	643,194	12,016	655,210	1.9%
Mar-17	535,617	9,461	545,078	1.8%	12,722	155	12,877	1.2%	42,126	311	42,437	0.7%	99,364	947	100,311	1.0%	645,963	10,501	656,464	1.6%
Apr-17	534,449	9,320	543,769	1.7%	12,794	116	12,910	0.9%	41,882	259	42,141	0.6%	99,200	974	100,174	1.0%	644,535	10,401	654,936	1.6%
May-17	534,800	10,793	545,593	2.0%	12,846	103	12,949	0.8%	41,974	262	42,236	0.6%	99,826	781	100,607	0.8%	645,540	11,661	657,201	1.8%
Jun-17	535,449	8,664	544,113	1.6%	12,834	104	12,938	0.8%	41,882	231	42,113	0.6%	100,021	695	100,716	0.7%	646,464	9,446	655,910	1.5%
Jul-17	537,079	8,878	545,957	1.7%	12,834	69	12,903	0.5%	41,969	222	42,191	0.5%	100,584	-96	100,488	0.6%	648,513	9,588	658,101	1.5%
Aug-17	539,698				12,893				42,177				101,125				651,635			
Sep-17																				
Oct-17																				
Nov-17																				
Dec-17																				
Jan-18																				
Feb-18																				
Mar-18																				
Apr-18																				
May-18																				
Jun-18																				
Jul-18																				

Fiscal Year Averages

Fiscal Year	FMC				Aged				Blind and Disabled				Total MAABD				Total Medicaid			
	Initial Caseload Count	Retro.	Caseload with Retro.	% Retro.	Initial Caseload Count	Retro.	Caseload with Retro.	% Retro.	Initial Caseload Count	Retro.	Caseload with Retro.	% Retro.	Initial Caseload Count	Retro.	Caseload with Retro.	% Retro.	Initial Caseload Count	Retro.	Caseload with Retro.	% Retro.
FY14	287,197	33,884	321,081	11.1%	10,974	298	11,272	2.7%	34,629	1,380	36,009	4.0%	77,858	2,402	80,260	3.1%	374,043	36,454	410,497	9.3%
FY15	463,507	20,609	484,116	4.5%	11,623	243	11,866	2.1%	37,622	537	38,159	1.4%	85,646	1,523	87,169	1.8%	558,774	22,319	581,092	4.0%
FY16	505,872	12,322	518,194	2.4%	12,181	173	12,355	1.4%	39,686	352	40,037	0.9%	91,761	1,159	92,920	1.3%	608,237	13,600	621,837	2.2%
FY17	529,040	11,061	540,101	2.1%	12,699	162	12,861	1.3%	41,562	317	41,879	0.8%	97,926	967	98,893	1.0%	637,798	12,134	649,931	1.9%

Percent in Managed Care by Client Type

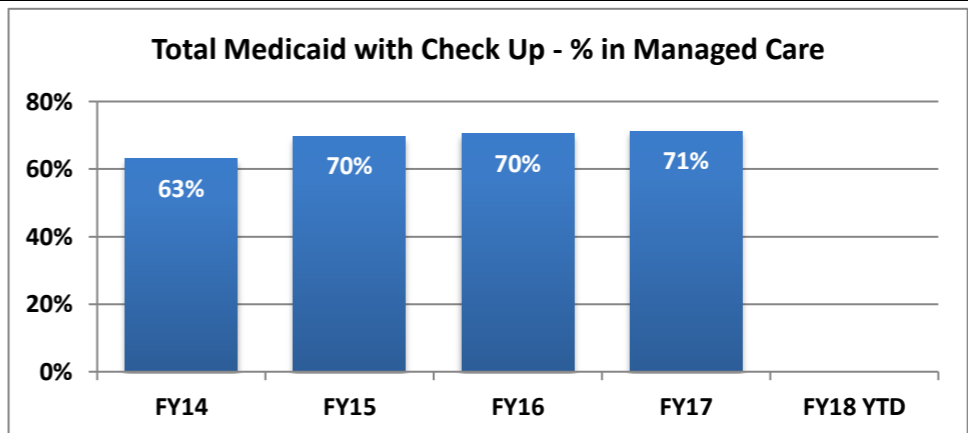


Percent of Medicaid Clients in Managed Care

Month	Nevada Check Up			Traditional Medicaid			Newly Eligible Adults			Total Medicaid with Check Up		
	Managed Care Enrollment	Total Caseload	% in Managed Care	Managed Care Enrollment	Total Caseload net of SLMB	% in Managed Care	Managed Care Enrollment	Total Caseload	% in Managed Care	Managed Care Enrollment	Total Caseload net of SLMB	% in Managed Care
Jul-16	21,252	24,315	87%	262,901	431,653	61%	166,231	200,583	83%	450,384	632,236	71%
Aug-16	21,825	24,801	88%	263,202	435,243	60%	165,885	202,122	82%	450,912	637,365	71%
Sep-16	21,572	24,741	87%	265,827	436,233	61%	168,266	203,163	83%	455,665	639,396	71%
Oct-16	22,332	25,558	87%	266,694	438,785	61%	169,373	204,878	83%	458,399	643,663	71%
Nov-16	22,812	26,036	88%	266,940	438,999	61%	170,471	205,406	83%	460,223	644,405	71%
Dec-16	22,105	25,492	87%	268,465	439,461	61%	171,552	207,966	82%	462,122	647,427	71%
Jan-17	22,565	25,896	87%	268,498	441,908	61%	172,528	210,296	82%	463,591	652,204	71%
Feb-17	23,474	26,551	88%	268,400	443,300	61%	172,358	210,670	82%	464,232	653,970	71%
Mar-17	22,310	25,795	86%	268,807	444,413	60%	174,164	211,414	82%	465,281	655,827	71%
Apr-17	22,829	26,050	88%	270,207	443,888	61%	175,639	210,861	83%	468,675	654,749	72%
May-17	23,681	26,989	88%	269,956	445,548	61%	175,495	211,053	83%	469,132	656,601	71%
Jun-17	22,844	26,165	87%	272,566	445,722	61%	176,373	210,960	84%	471,783	656,682	72%
Jul-17	23,202	26,369	88%	272,394	447,823	61%	176,119	211,060	83%	471,715	658,883	72%
Aug-17	23,581			271,098			175,004			469,477		
Sep-17												
Oct-17												
Nov-17												
Dec-17												
Jan-18												
Feb-18												
Mar-18												
Apr-18												
May-18												
Jun-18												

Fiscal Year Averages

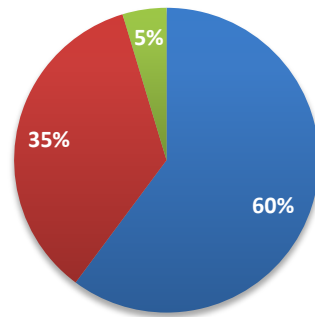
	Managed Care Enrollment	% in Managed Care
FY14	243,142	63%
FY15	395,743	70%
FY16	437,740	70%
FY17	461,700	71%
FY18 YTD	23,392	



Note: Traditional Medicaid totals include both cat 11 (CHIP Expansion), and cat 12 (TANF/CHAP) populations.

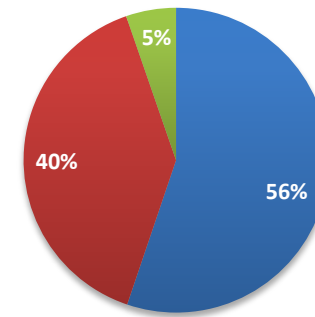
Managed Care by Client Type

Amerigroup



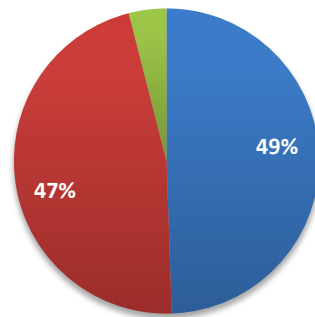
■ Traditional Medicaid ■ Newly Eligible Adults ■ Nevada Check Up

Nevada Health Plan



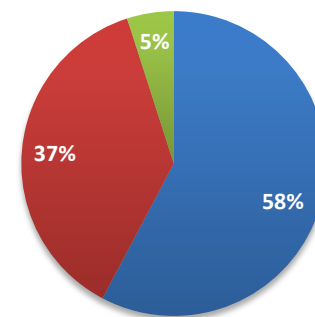
■ Traditional Medicaid ■ Newly Eligible Adults ■ Nevada Check Up

Silver Summit



■ Traditional Medicaid ■ Newly Eligible Adults ■ Nevada Check Up

Managed Care by Client Type - Totals



■ Traditional Medicaid ■ Newly Eligible Adults ■ Nevada Check Up

Managed Care Providers

Month	Amerigrou								Health Plan								Total Managed Care Enrollment
	Traditional Medicaid	% of Traditional Medicaid	Newly Eligible Adults	% of Newly Eligible	Nevada Check Up	% of Nevada Check Up	Total for Plan	% of Total	Traditional Medicaid	% of Traditional Medicaid	Newly Eligible Adults	% of Newly Eligible	Nevada Check Up	% of Nevada Check Up	Total for Plan	% of Total	
Jul-16	114,584	44%	65,662	40%	8,222	39%	188,468	42%	148,317	56%	100,569	60%	13,030	61%	261,916	58%	450,384
Aug-16	114,442	43%	65,605	40%	8,465	39%	188,512	42%	148,760	57%	100,280	60%	13,360	61%	262,400	58%	450,912
Sep-16	115,824	44%	66,527	40%	8,318	39%	190,669	42%	150,003	56%	101,739	60%	13,254	61%	264,996	58%	455,665
Oct-16	114,255	43%	65,991	39%	8,425	38%	188,671	41%	152,439	57%	103,382	61%	13,907	62%	269,728	59%	458,399
Nov-16	114,359	43%	66,291	39%	8,679	38%	189,329	41%	152,581	57%	104,180	61%	14,133	62%	270,894	59%	460,223
Dec-16	114,887	43%	66,667	39%	8,421	38%	189,975	41%	153,578	57%	104,885	61%	13,684	62%	272,147	59%	462,122
Jan-17	114,881	43%	67,000	39%	8,574	38%	190,455	41%	153,617	57%	105,528	61%	13,991	62%	273,136	59%	463,591
Feb-17	114,723	43%	67,171	39%	8,917	38%	190,811	41%	153,677	57%	105,187	61%	14,557	62%	273,421	59%	464,232
Mar-17	114,921	43%	67,961	39%	8,479	38%	191,361	41%	153,886	57%	106,203	61%	13,831	62%	273,920	59%	465,281
Apr-17	115,275	43%	68,420	39%	8,773	38%	192,468	41%	154,932	57%	107,219	61%	14,056	62%	276,207	59%	468,675
May-17	115,094	43%	68,370	39%	9,163	39%	192,627	41%	154,862	57%	107,125	61%	14,518	61%	276,505	59%	469,132
Jun-17	116,511	43%	68,632	39%	8,799	39%	193,942	41%	156,055	57%	107,741	61%	14,045	61%	277,841	59%	471,783
Jul-17	115,164	42%	67,586	38%	8,791	38%	191,541	41%	156,073	57%	107,381	61%	14,270	62%	277,724	59%	471,715
Aug-17	113,592	42%	66,248	38%	8,858	38%	188,698	40%	154,678	57%	105,971	61%	14,258	61%	274,907	59%	469,477
Sep-17	112,905	41%	65,821	37%	8,844	38%	187,570	40%	155,089	57%	105,810	60%	14,337	61%	275,236	58%	474,187
Oct-17																	
Nov-17																	
Dec-17																	
Jan-18																	
Feb-18																	
Mar-18																	
Apr-18																	
May-18																	
Jun-18																	

Note:

Fiscal Year Averages

Fiscal Year	Amerigrou								Health Plan							
	Traditional Medicaid	% of Traditional Medicaid	Newly Eligible Adults	% of Newly Eligible	Nevada Check Up	% of Nevada Check Up	Total for Plan	% of Total	Traditional Medicaid	% of Traditional Medicaid	Newly Eligible Adults	% of Newly Eligible	Nevada Check Up	% of Nevada Check Up	Total for Plan	% of Total
FY14	110,819	45%	54,962	42%	7,744	39%	173,525	44%	133,741	55%	76,332	58%	12,146	61%	222,218	56%
FY15	112,119	44%	63,560	40%	7,655	39%	183,334	42%	143,176	56%	95,741	60%	12,020	61%	250,936	58%
FY16	114,584	44%	65,662	40%	8,222	39%	188,468	42%	148,317	56%	100,569	60%	13,030	61%	261,916	58%
FY17	114,840	43%	66,879	39%	8,585	38%	190,304	41%	152,423	57%	104,209	61%	13,847	62%	270,479	59%
FY18 YTD	113,887	42%	66,552	38%	8,831	38%	189,270	40%	155,280	57%	106,387	60%	14,288	61%	275,956	58%

Managed Care Providers - Continued

Month	Silver Summit								Aetna								Total Managed Care Enrollment
	Traditional Medicaid	% of Traditional Medicaid	Newly Eligible Adults	% of Newly Eligible	Nevada Check Up	% of Nevada Check Up	Total for Plan	% of Total	Traditional Medicaid	% of Traditional Medicaid	Newly Eligible Adults	% of Newly Eligible	Nevada Check Up	% of Nevada Check Up	Total for Plan	% of Total	
Jul-16																	450,384
Aug-16																	450,912
Sep-16																	455,665
Oct-16																	458,399
Nov-16																	460,223
Dec-16																	462,122
Jan-17																	463,591
Feb-17																	464,232
Mar-17																	465,281
Apr-17																	468,675
May-17																	469,132
Jun-17																	471,783
Jul-17	386	0.1%	405	0.2%	51	0.2%	842	0.2%	771	0.3%	747	0.4%	90	0.4%	1,608	0.3%	471,715
Aug-17	1,618	0.6%	1,547	0.9%	169	0.7%	3,334	0.7%	1,210	0.4%	1,238	0.7%	90	0.4%	2,538	0.5%	469,477
Sep-17	5,691	2.1%	5,290	3.0%	400	1.7%	11,381	2.4%									474,187
Oct-17																	
Nov-17																	
Dec-17																	
Jan-18																	
Feb-18																	
Mar-18																	
Apr-18																	
May-18																	
Jun-18																	

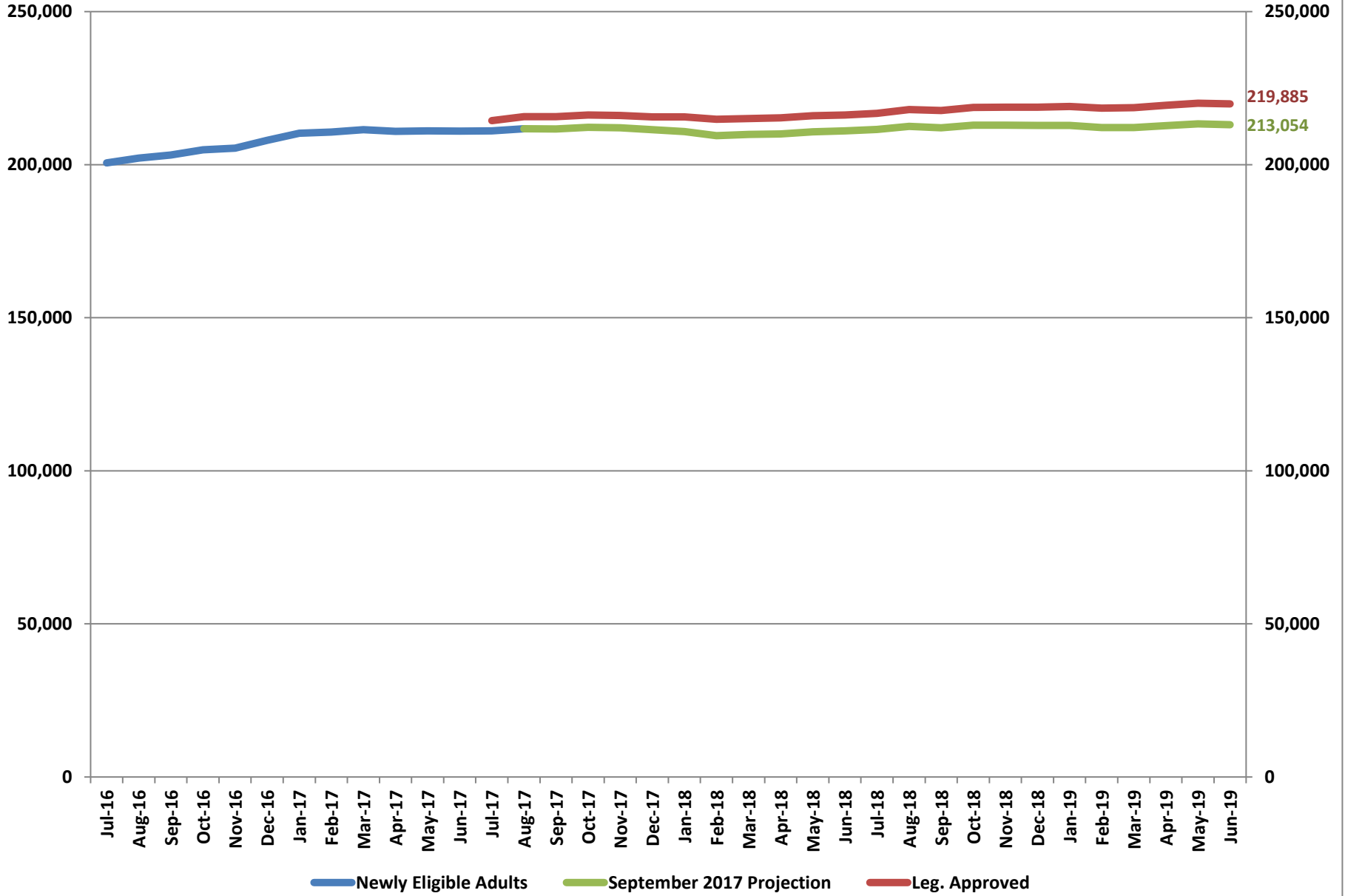
Note: Traditional Medicaid totals include both cat 11 (CHIP Expansion), and cat 12 (TANF/CHAP) populations.

Fiscal Year Averages

Fiscal Year	Silver Summit								Aetna								
	Traditional Medicaid	% of Traditional Medicaid	Newly Eligible Adults	% of Newly Eligible	Nevada Check Up	% of Nevada Check Up	Total for Plan	% of Total	Traditional Medicaid	% of Traditional Medicaid	Newly Eligible Adults	% of Newly Eligible	Nevada Check Up	% of Nevada Check Up	Total for Plan	% of Total	
FY14																	
FY15																	
FY16																	
FY17																	
FY18 YTD	2,565	0.9%	2,414	1.4%	207	0.9%	5,186	1.1%	991	0.4%	993	0.6%	90	0.4%	2,073	0.4%	

Note: Aetna Better Health only participated in the Managed Care program for two months. Their case loads for the two months are included in Totals

Newly Eligible Adults



Newly Eligible Adults

FY16 & FY17 Biennium

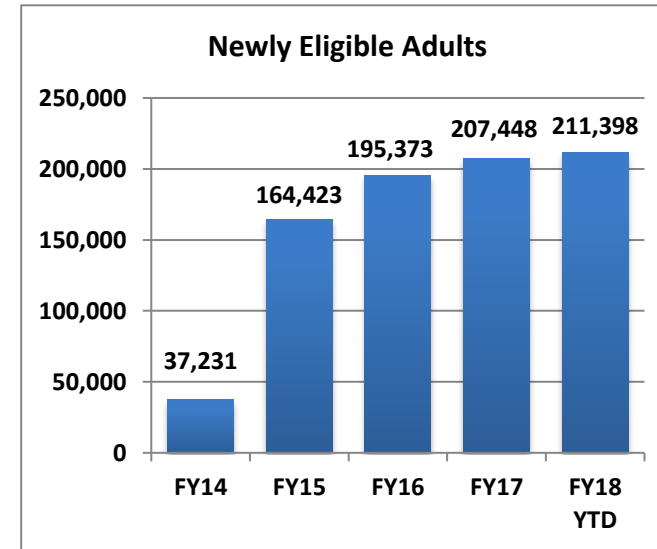
Month	Newly Eligible Adults
Jul-15	182,223
Aug-15	183,742
Sep-15	187,110
Oct-15	189,623
Nov-15	192,224
Dec-15	196,446
Jan-16	199,534
Feb-16	203,292
Mar-16	203,939
Apr-16	202,469
May-16	202,255
Jun-16	201,613
Jul-16	200,583
Aug-16	202,122
Sep-16	203,163
Oct-16	204,878
Nov-16	205,406
Dec-16	207,966
Jan-17	210,296
Feb-17	210,670
Mar-17	211,414
Apr-17	210,861
May-17	211,053
Jun-17	210,960

FY18 & FY19 Biennium

Month	Newly Eligible Adults	Leg. Approved	September 2017 Projection
Jul-17	211,060	214,390	
Aug-17	211,736	215,672	211,736
Sep-17		215,691	211,698
Oct-17		216,251	212,179
Nov-17		216,105	212,085
Dec-17		215,596	211,430
Jan-18		215,576	210,782
Feb-18		214,810	209,478
Mar-18		215,051	209,897
Apr-18		215,296	210,065
May-18		216,011	210,767
Jun-18		216,215	211,072
Jul-18		216,778	211,509
Aug-18		218,009	212,541
Sep-18		217,673	212,027
Oct-18		218,687	212,900
Nov-18		218,810	212,920
Dec-18		218,802	212,802
Jan-19		218,980	212,843
Feb-19		218,499	212,166
Mar-19		218,614	212,150
Apr-19		219,372	212,759
May-19		220,076	213,331
Jun-19		219,885	213,054

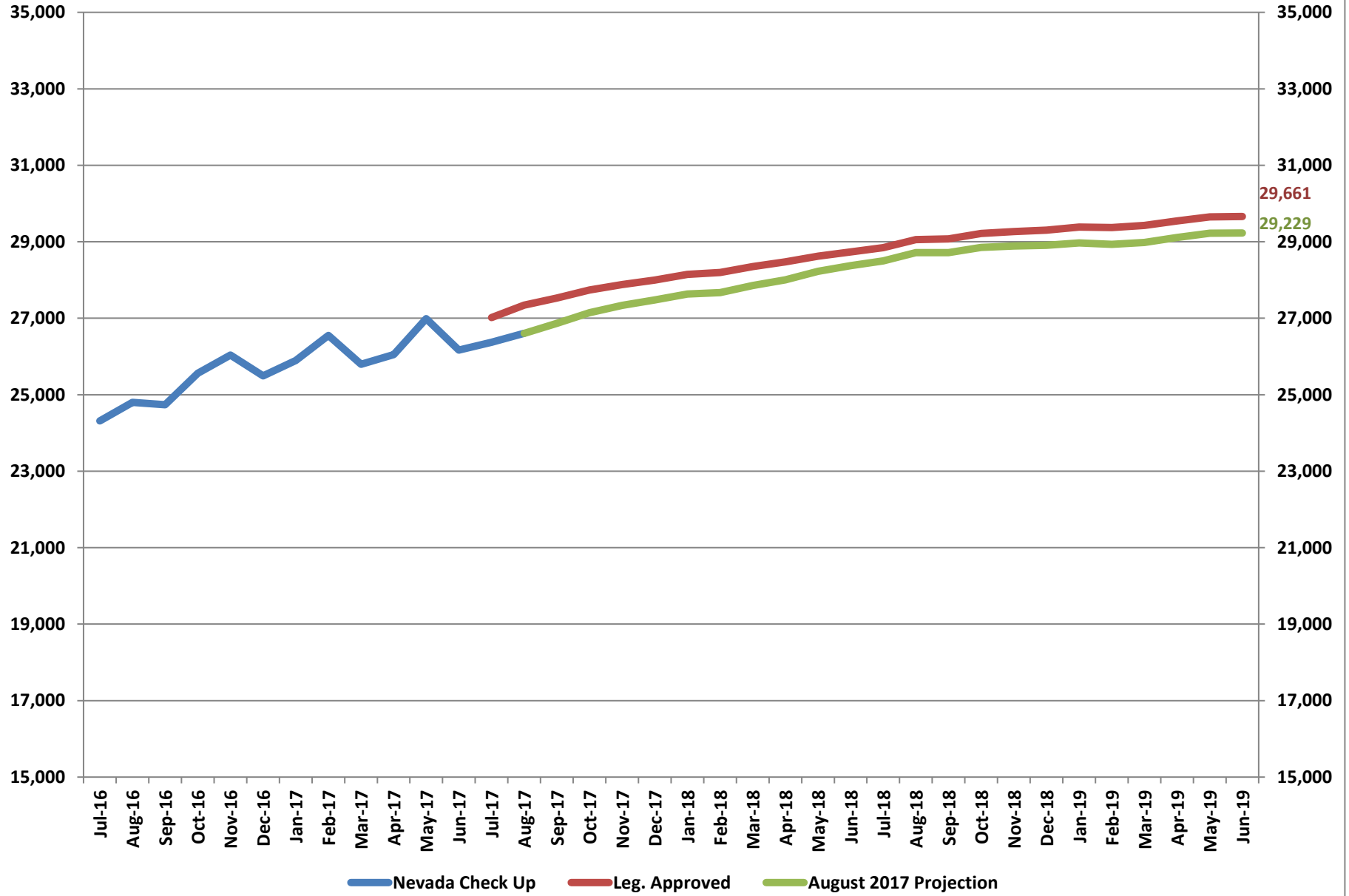
Fiscal Year Averages

Fiscal Year	Newly Eligible Adults	Percent Change
FY14	37,231	
FY15	164,423	341.6%
FY16	195,373	18.8%
FY17	207,448	6.2%
FY18 YTD	211,398	1.9%



Note: This caseload includes childless adults age 19-64 between 0%-138% FPL and parents age 19-64 between 23%-138% FPL.

Nevada Check Up



Nevada Check Up

FY16 & FY17 Biennium

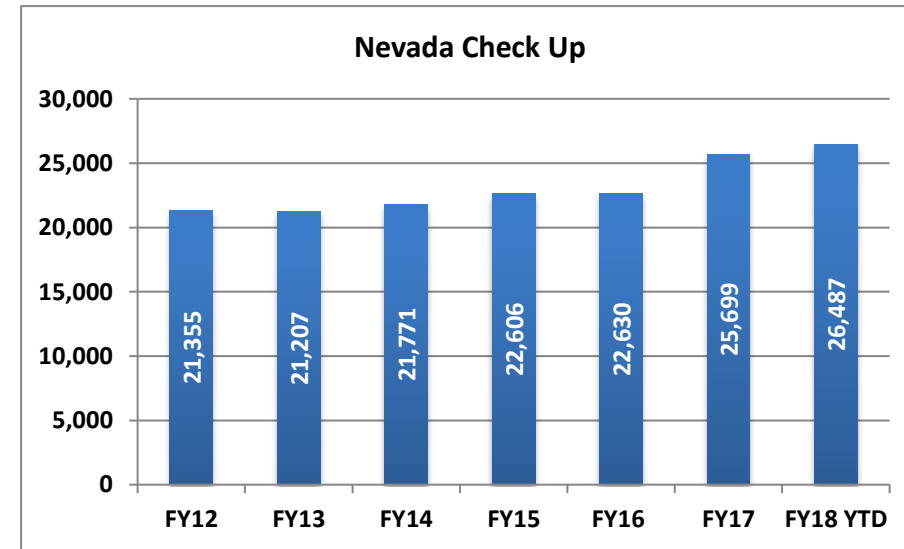
Month	Nevada Check Up
Jul-15	20,995
Aug-15	21,373
Sep-15	21,154
Oct-15	22,419
Nov-15	22,742
Dec-15	22,922
Jan-16	22,211
Feb-16	23,276
Mar-16	22,471
Apr-16	23,837
May-16	24,431
Jun-16	23,728
Jul-16	24,315
Aug-16	24,801
Sep-16	24,741
Oct-16	25,558
Nov-16	26,036
Dec-16	25,492
Jan-17	25,896
Feb-17	26,551
Mar-17	25,795
Apr-17	26,050
May-17	26,989
Jun-17	26,165

FY18 & FY19 Biennium

Month	Nevada Check Up	Leg. Approved	August 2017 Projection
Jul-17	26,369	27,018	
Aug-17	26,604	27,342	26,604
Sep-17		27,531	26,869
Oct-17		27,739	27,142
Nov-17		27,880	27,339
Dec-17		27,997	27,480
Jan-18		28,146	27,635
Feb-18		28,194	27,673
Mar-18		28,354	27,853
Apr-18		28,476	28,006
May-18		28,625	28,225
Jun-18		28,736	28,376
Jul-18		28,848	28,502
Aug-18		29,054	28,715
Sep-18		29,076	28,717
Oct-18		29,215	28,855
Nov-18		29,268	28,891
Dec-18		29,306	28,906
Jan-19		29,387	28,972
Feb-19		29,370	28,930
Mar-19		29,431	28,984
Apr-19		29,545	29,112
May-19		29,648	29,225
Jun-19		29,661	29,229

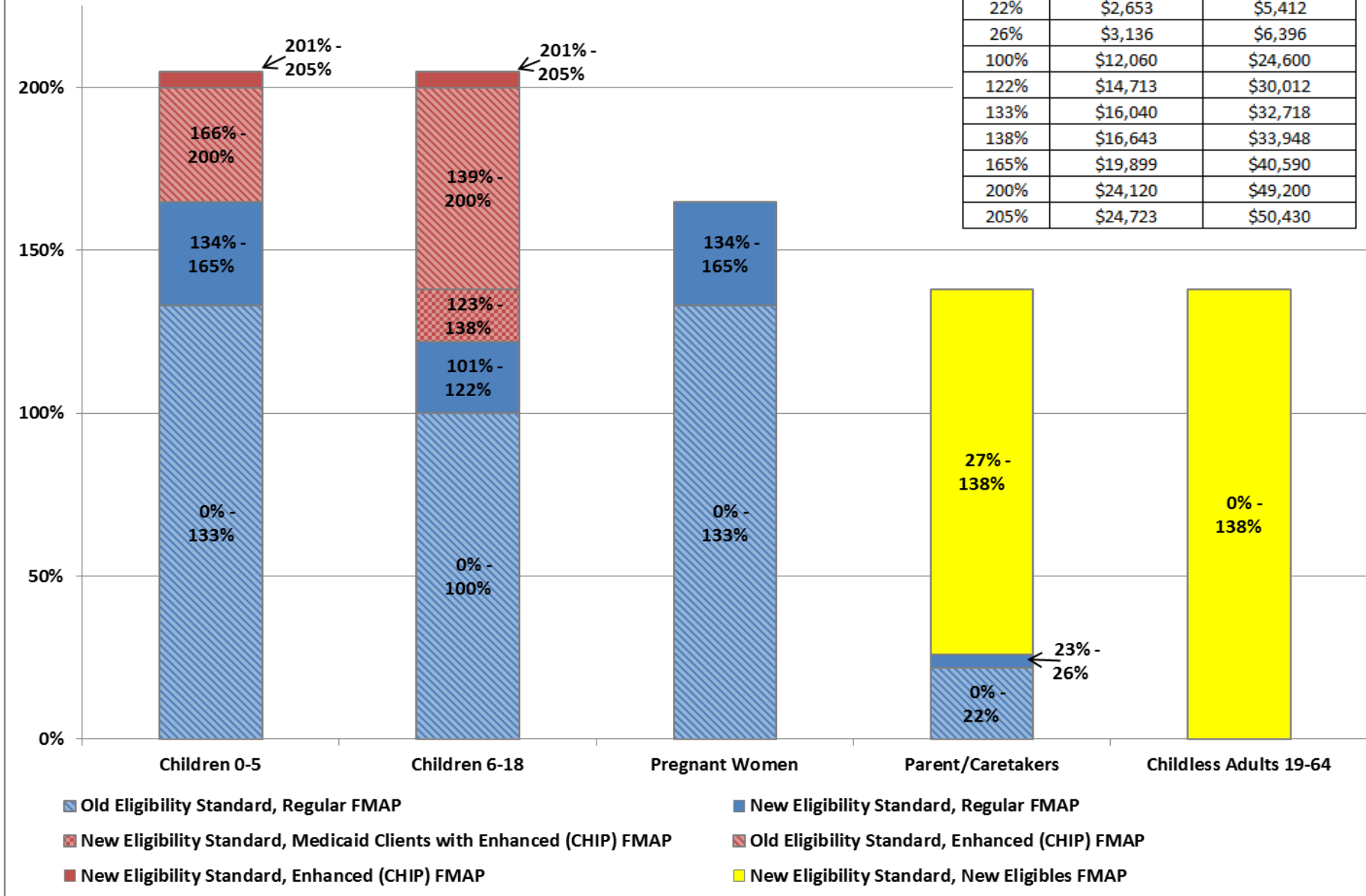
Fiscal Year Averages

Fiscal Year	Nevada Check Up	Percent Change
FY12	21,355	
FY13	21,207	-0.7%
FY14	21,771	2.7%
FY15	22,606	3.8%
FY16	22,630	0.1%
FY17	25,699	13.6%
FY18 YTD	26,487	3.1%



Medicaid Eligibility and FMAP

2017 Federal Poverty Guidelines		
FPL	Household Size 1	Household Size 4
22%	\$2,653	\$5,412
26%	\$3,136	\$6,396
100%	\$12,060	\$24,600
122%	\$14,713	\$30,012
133%	\$16,040	\$32,718
138%	\$16,643	\$33,948
165%	\$19,899	\$40,590
200%	\$24,120	\$49,200
205%	\$24,723	\$50,430



Federal Medical Assistance Percentages (FMAP)

State Fiscal Year	FMAP	Enhanced (CHIP) FMAP	ACA Enhanced (CHIP) FMAP	New Eligibles FMAP
FY03	51.79%	66.25%		
	52.53%	66.77%		
FY04	54.30%	68.01%		
	55.34%	68.74%		
FY05	55.66%	68.96%		
FY06	55.05%	68.53%		
FY07	54.14%	67.90%		
FY08	52.96%	67.07%		
FY09	50.66%	65.46%		
	61.11%	72.78%		
FY10	50.12%	65.08%		
	63.93%	74.75%		
FY11	51.25%	65.87%		
	62.05%	70.44%		
FY12	55.05%	68.54%		
FY13	58.86%	71.20%		
FY14	62.26%	73.58%		100.00%
FY15	64.04%	74.83%		100.00%
FY16	64.79%	75.35%	92.60%	100.00%
FY17	64.74%	75.32%	98.32%	97.50%
FY18	65.48%	75.84%	98.84%	94.50%
FY19	65.56%	75.90%	98.90%	93.50%
FY20	64.98%	75.48%	81.23%	91.50%

Note: The green cells reflect a 2.95% increase for the period April 2003 through June 2004. The blue cells reflect the ARRA stimulus adjusted FMAP for October 2008 through December 2010. The FMAP values for FY19 through FY20 are projections.