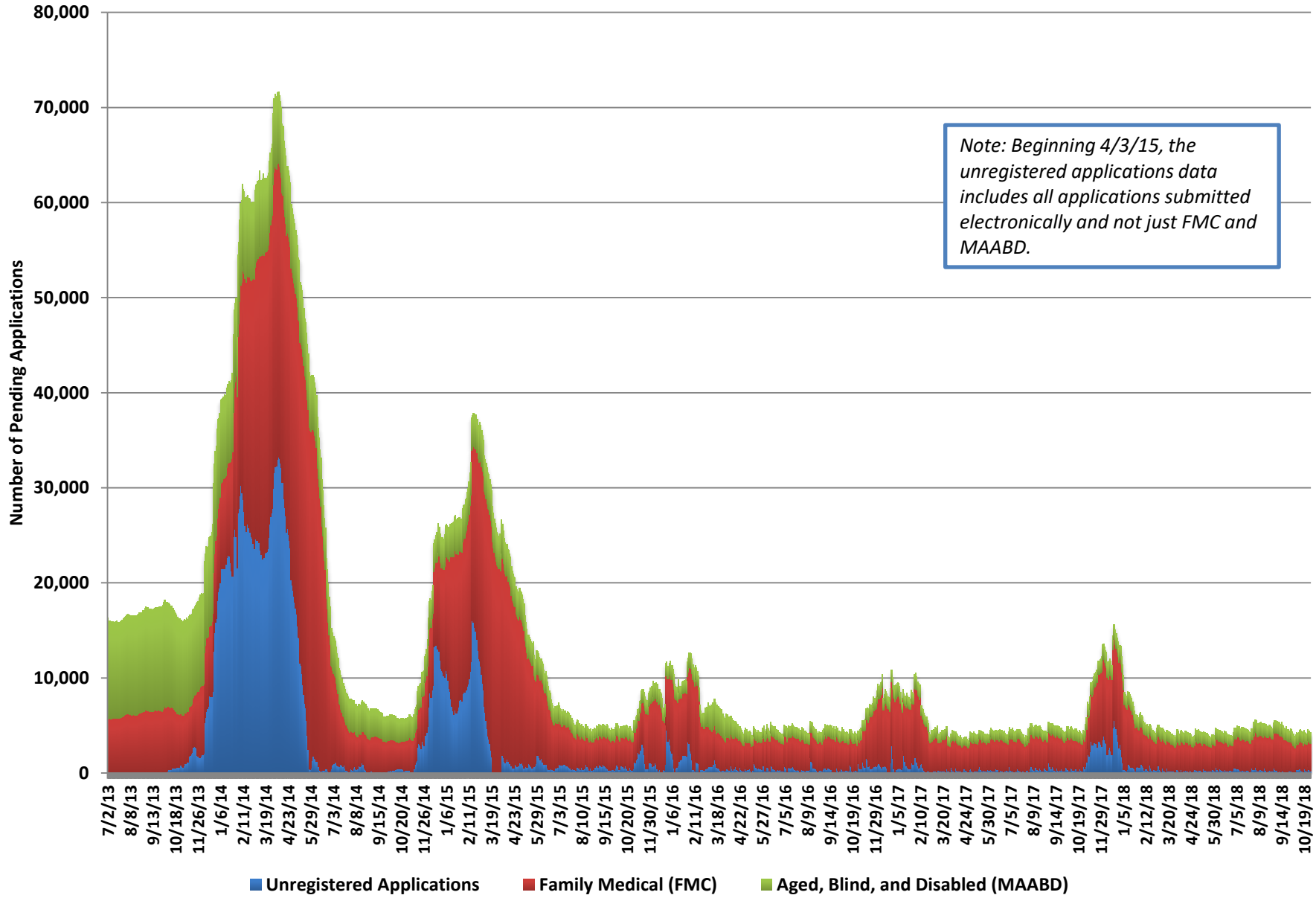


# Medicaid Chart Pack

---

November 2018

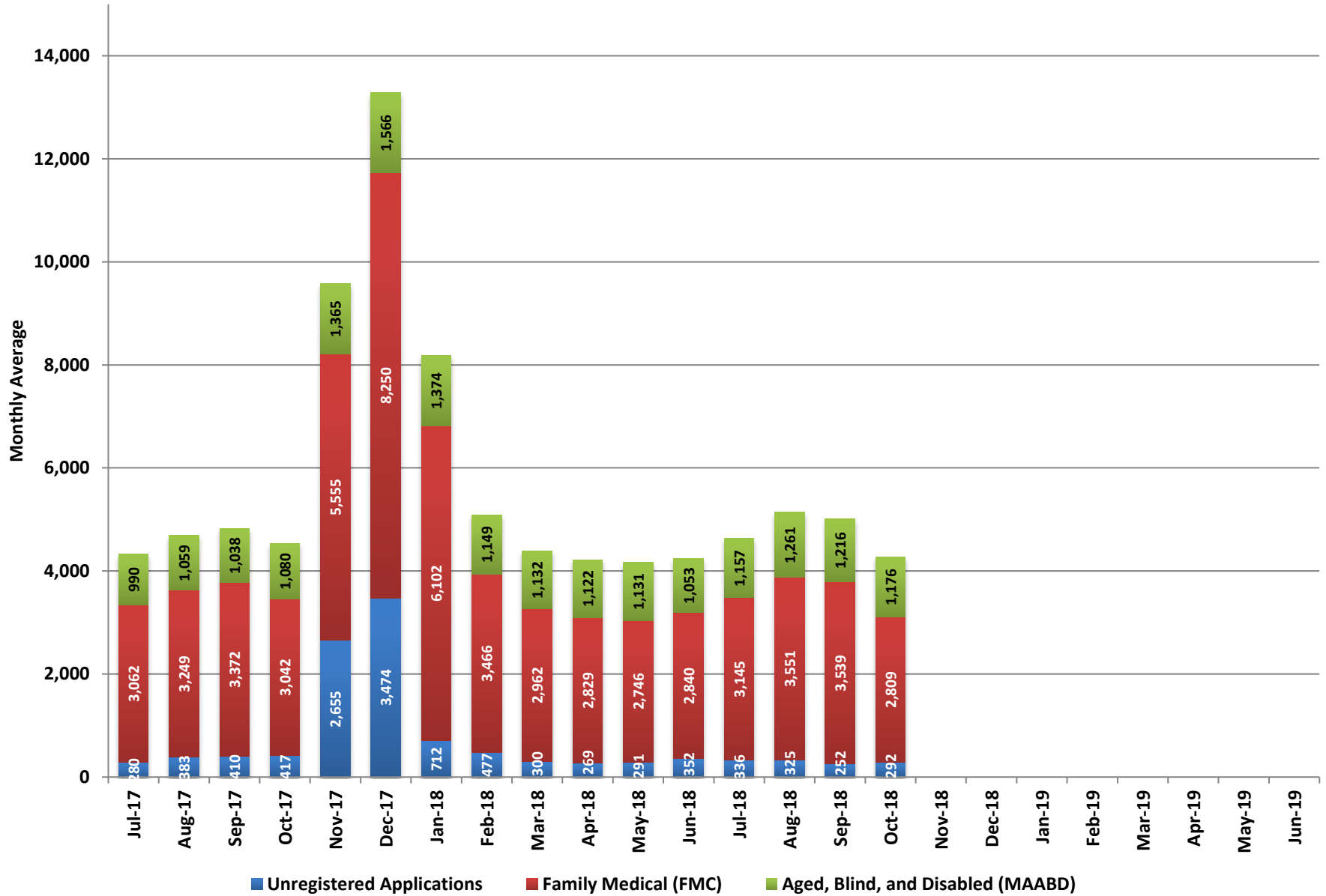
# Pending Applications



## Pending Applications

Date	Unregistered Applications	Family Medical (FMC)			Aged, Blind, and Disabled (MAABD)				Total Medicaid Pending Applications
		Pending <= 45 Days	Pending > 45 Days	Total Applications	Pending <= 45 Days	Pending 46-90 Days	Pending > 90 Days	Total Applications	
10/1/18	154	3,065	43	3,108	1,078	147	71	1,296	4,558
10/2/18	4	3,008	44	3,052	1,053	140	67	1,260	4,316
10/3/18	0	2,832	34	2,866	1,050	127	65	1,242	4,108
10/4/18	0	2,637	29	2,666	1,041	110	64	1,215	3,881
10/5/18	100	2,514	30	2,544	1,038	107	67	1,212	3,856
10/8/18	332	2,456	29	2,485	1,014	124	67	1,205	4,022
10/9/18	526	2,566	28	2,594	980	118	65	1,163	4,283
10/10/18	367	2,610	25	2,635	969	112	63	1,144	4,146
10/11/18	409	2,716	24	2,740	960	107	61	1,128	4,277
10/12/18	459	2,855	26	2,881	966	106	61	1,133	4,473
10/15/18	581	2,831	29	2,860	957	125	62	1,144	4,585
10/16/18	302	2,916	31	2,947	955	125	59	1,139	4,388
10/17/18	200	2,935	35	2,970	945	134	58	1,137	4,307
10/18/18	25	2,820	32	2,852	995	127	57	1,179	4,056
10/19/18	543	2,714	32	2,746	1,035	118	61	1,214	4,503
10/22/18	414	2,654	33	2,687	984	135	59	1,178	4,279
10/23/18	294	2,713	34	2,747	960	127	56	1,143	4,184
10/24/18	186	2,770	37	2,807	970	125	55	1,150	4,143
10/25/18	663	2,742	34	2,776	954	121	56	1,131	4,570
10/29/18	351	2,866	39	2,905	971	133	61	1,165	4,421
10/30/18	324	2,946	36	2,982	950	132	65	1,147	4,453
10/31/18	182	2,907	37	2,944	947	126	69	1,142	4,268

## Pending Applications (Monthly Average)



**Pending Applications  
(Monthly Averages)**

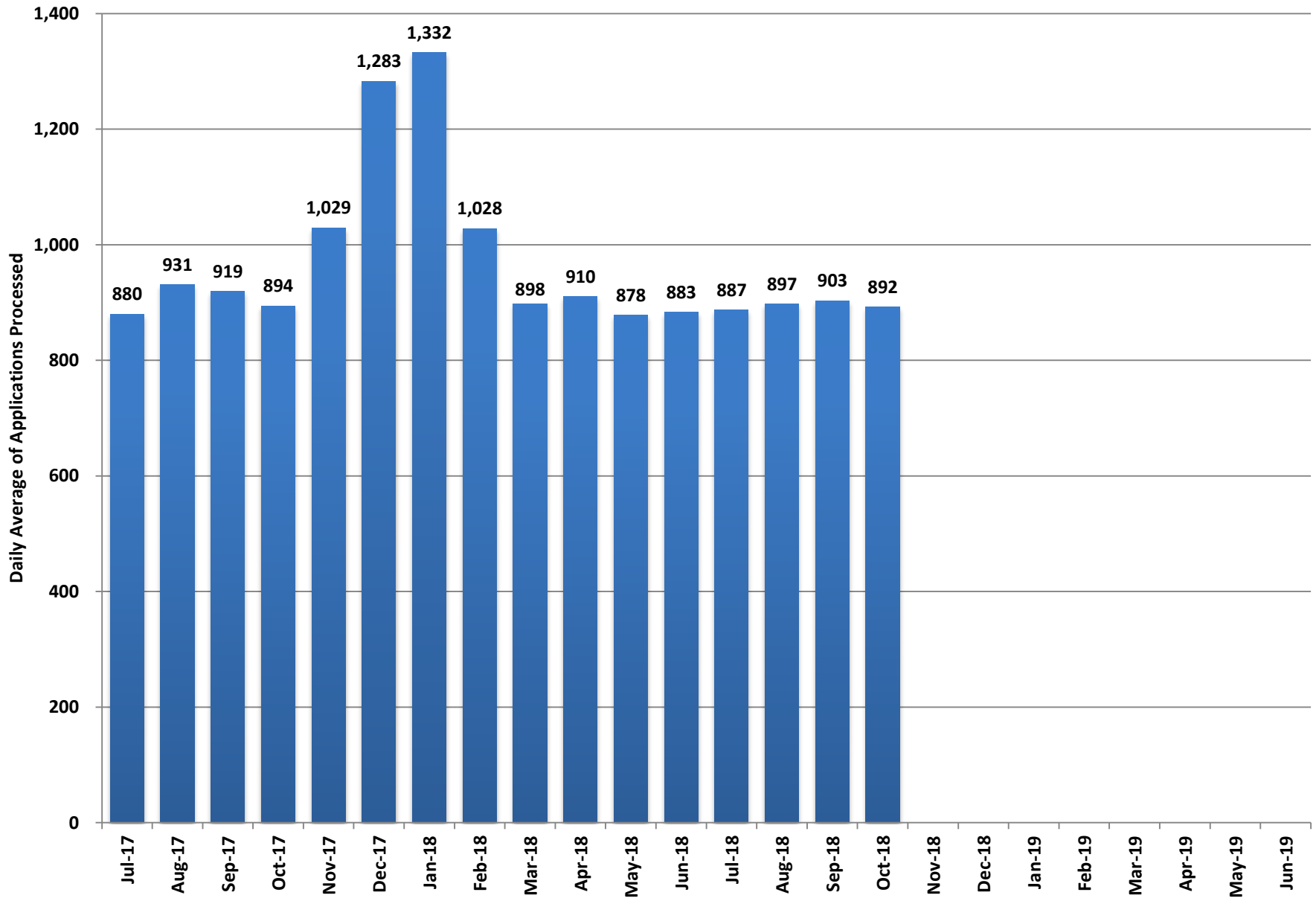
Month	Unregistered Applications	Family Medical (FMC)			Aged, Blind, and Disabled (MAABD)				Total Medicaid Pending Applications
		Pending <= 45 Days	Pending > 45 Days	Total Applications	Pending <= 45 Days	Pending 46-90 Days	Pending > 90 Days	Total Applications	
Jul-17	280	3,013	49	3,062	865	81	44	990	4,333
Aug-17	383	3,203	46	3,249	942	64	53	1,059	4,690
Sep-17	410	3,304	67	3,372	908	77	54	1,038	4,819
Oct-17	417	2,967	75	3,042	939	91	51	1,080	4,539
Nov-17	2,655	5,516	39	5,555	1,211	105	48	1,365	9,575
Dec-17	3,474	8,189	61	8,250	1,419	96	51	1,566	13,290
Jan-18	712	6,027	75	6,102	1,215	108	50	1,374	8,188
Feb-18	477	3,422	44	3,466	1,020	85	44	1,149	5,093
Mar-18	300	2,926	35	2,962	999	86	47	1,132	4,394
Apr-18	269	2,803	26	2,829	985	88	48	1,122	4,219
May-18	291	2,724	22	2,746	981	95	55	1,131	4,168
Jun-18	352	2,815	25	2,840	881	118	53	1,053	4,246
Jul-18	336	3,116	29	3,145	987	112	58	1,157	4,639
Aug-18	325	3,521	30	3,551	1,097	110	55	1,261	5,137
Sep-18	252	3,505	34	3,539	1,029	127	60	1,216	5,008
Oct-18	292	2,776	33	2,809	990	124	62	1,176	4,276
Nov-18									
Dec-18									
Jan-19									
Feb-19									
Mar-19									
Apr-19									
May-19									
Jun-19									

**Fiscal Year Averages**

Fiscal Year	Unregistered Applications	Family Medical (FMC)			Aged, Blind, and Disabled (MAABD)				Total Medicaid Pending Applications
		Pending <= 45 Days	Pending > 45 Days	Total Applications	Pending <= 45 Days	Pending 46-90 Days	Pending > 90 Days	Total Applications	
FY14	13,681	7,925	8,462	16,387	2,094	1,197	5,355	8,646	35,324
FY15	3,376	6,810	3,357	10,167	1,369	498	1,129	2,997	16,405
FY16	797	4,150	28	4,178	974	162	271	1,407	6,382
FY17	486	3,961	27	3,988	938	84	56	1,079	5,552
FY18	835	3,909	47	3,956	1,030	91	50	1,172	5,963
FY19 YTD	301	3,230	32	3,261	1,025	118	59	1,203	4,765

Note: Beginning 4/3/15, the unregistered applications data includes all applications submitted electronically and not just FMC and MAABD.

# Medicaid Applications Processed per Working Day

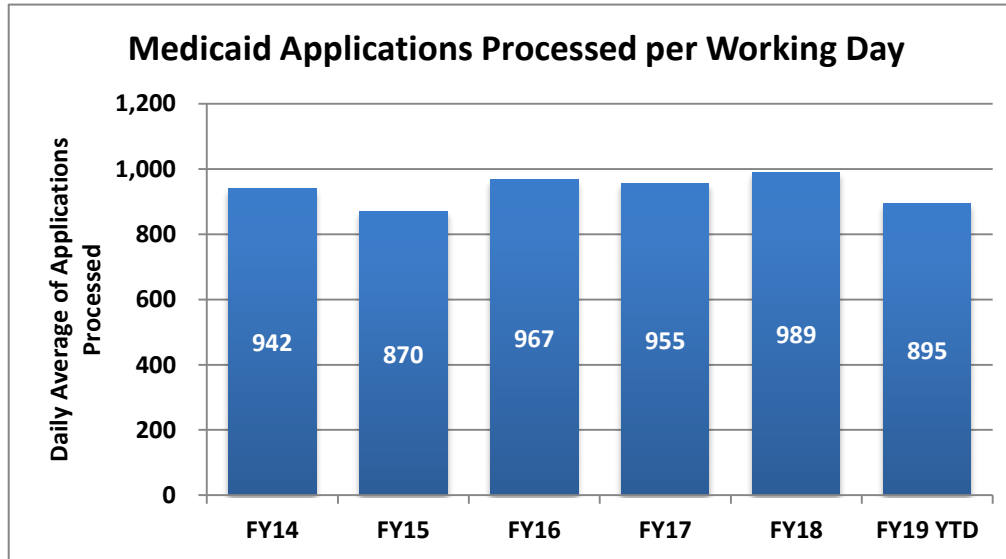


## Pending Applications Processed per Day

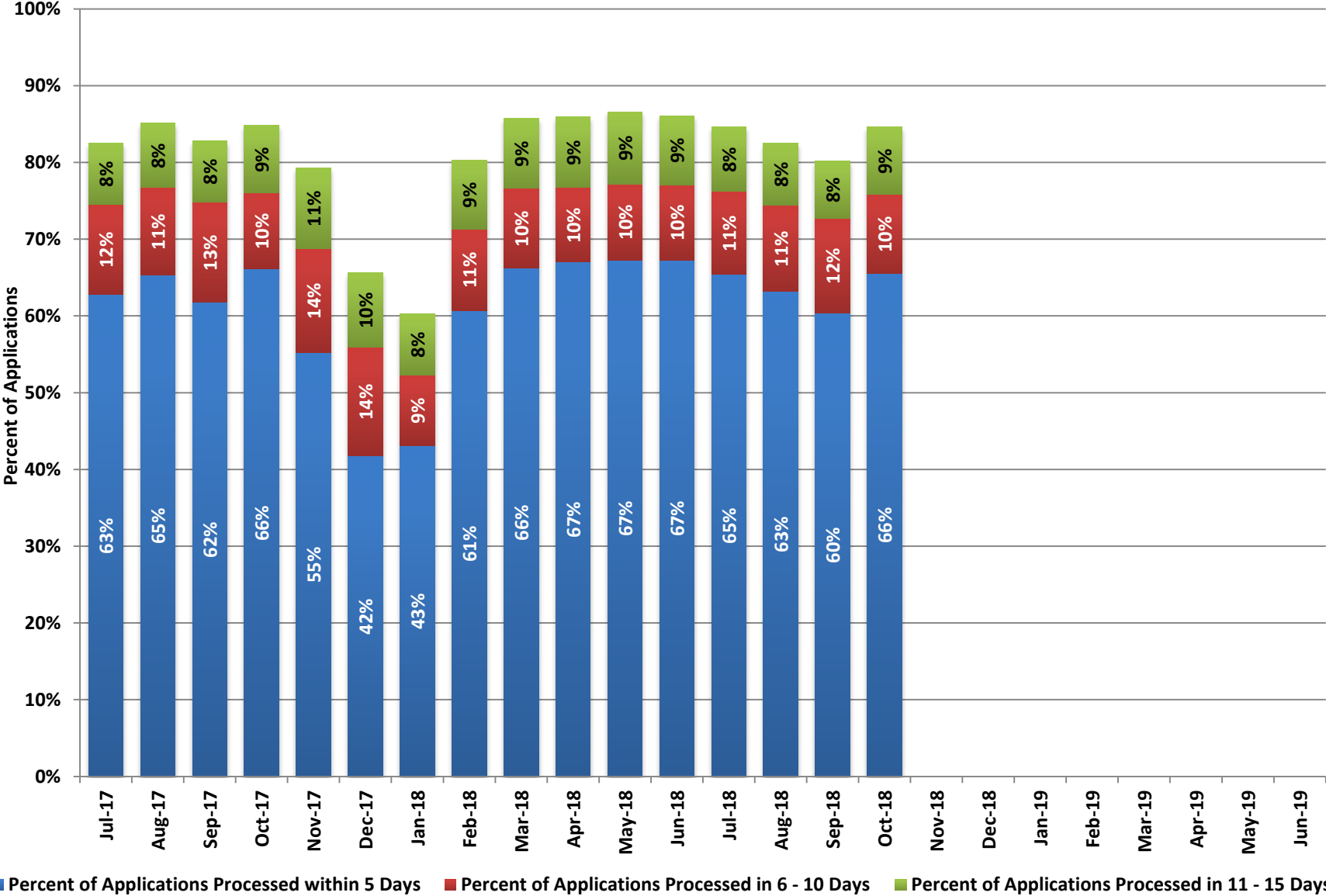
Month	Medicaid Applications Processed per Working Day
Jul-17	880
Aug-17	931
Sep-17	919
Oct-17	894
Nov-17	1,029
Dec-17	1,283
Jan-18	1,332
Feb-18	1,028
Mar-18	898
Apr-18	910
May-18	878
Jun-18	883
Jul-18	887
Aug-18	897
Sep-18	903
Oct-18	892
Nov-18	
Dec-18	
Jan-19	
Feb-19	
Mar-19	
Apr-19	
May-19	
Jun-19	

### *Fiscal Year Averages*

Fiscal Year	Medicaid Applications Processed per Working Day
<b>FY14</b>	942
<b>FY15</b>	870
<b>FY16</b>	967
<b>FY17</b>	955
<b>FY18</b>	989
<b>FY19 YTD</b>	895



# Applications Processed within 15 Days





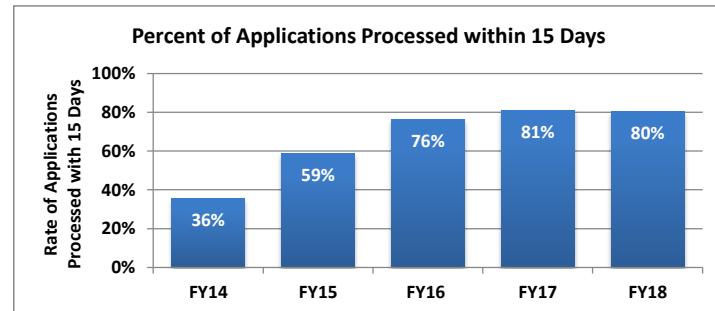
### Applications Processed within 15 Days

Month	Applications Processed within 5 Days	Percent of Applications Processed within 5 Days	Applications Processed in 6 - 10 Days	Percent of Applications Processed in 6 - 10 Days	Applications Processed in 11 - 15 Days	Percent of Applications Processed in 11 - 15 Days	Applications Processed within 15 Days	Total Applications Processed	Percent of Applications Processed within 15 Days
Jul-17	11,055	63%	2,065	12%	1,407	8%	14,527	17,594	83%
Aug-17	13,970	65%	2,438	11%	1,800	8%	18,208	21,403	85%
Sep-17	11,351	62%	2,386	13%	1,474	8%	15,211	18,376	83%
Oct-17	12,397	66%	1,849	10%	1,644	9%	15,890	18,765	85%
Nov-17	10,782	55%	2,663	14%	2,050	11%	15,495	19,544	79%
Dec-17	10,728	42%	3,615	14%	2,498	10%	16,841	25,651	66%
Jan-18	12,064	43%	2,565	9%	2,226	8%	16,855	27,969	60%
Feb-18	11,850	61%	2,068	11%	1,762	9%	15,680	19,523	80%
Mar-18	13,085	66%	2,053	10%	1,804	9%	16,942	19,757	86%
Apr-18	12,796	67%	1,851	10%	1,765	9%	16,412	19,104	86%
May-18	12,992	67%	1,912	10%	1,809	9%	16,713	19,306	87%
Jun-18	12,472	67%	1,823	10%	1,660	9%	15,955	18,544	86%
Jul-18	12,174	65%	2,019	11%	1,558	8%	15,751	18,619	85%
Aug-18	13,040	63%	2,303	11%	1,667	8%	17,010	20,634	82%
Sep-18	10,360	60%	2,115	12%	1,284	8%	13,759	17,158	80%
Oct-18	12,842	66%	2,030	10%	1,731	9%	16,603	19,615	85%
Nov-18									
Dec-18									
Jan-19									
Feb-19									
Mar-19									
Apr-19									
May-19									
Jun-19									

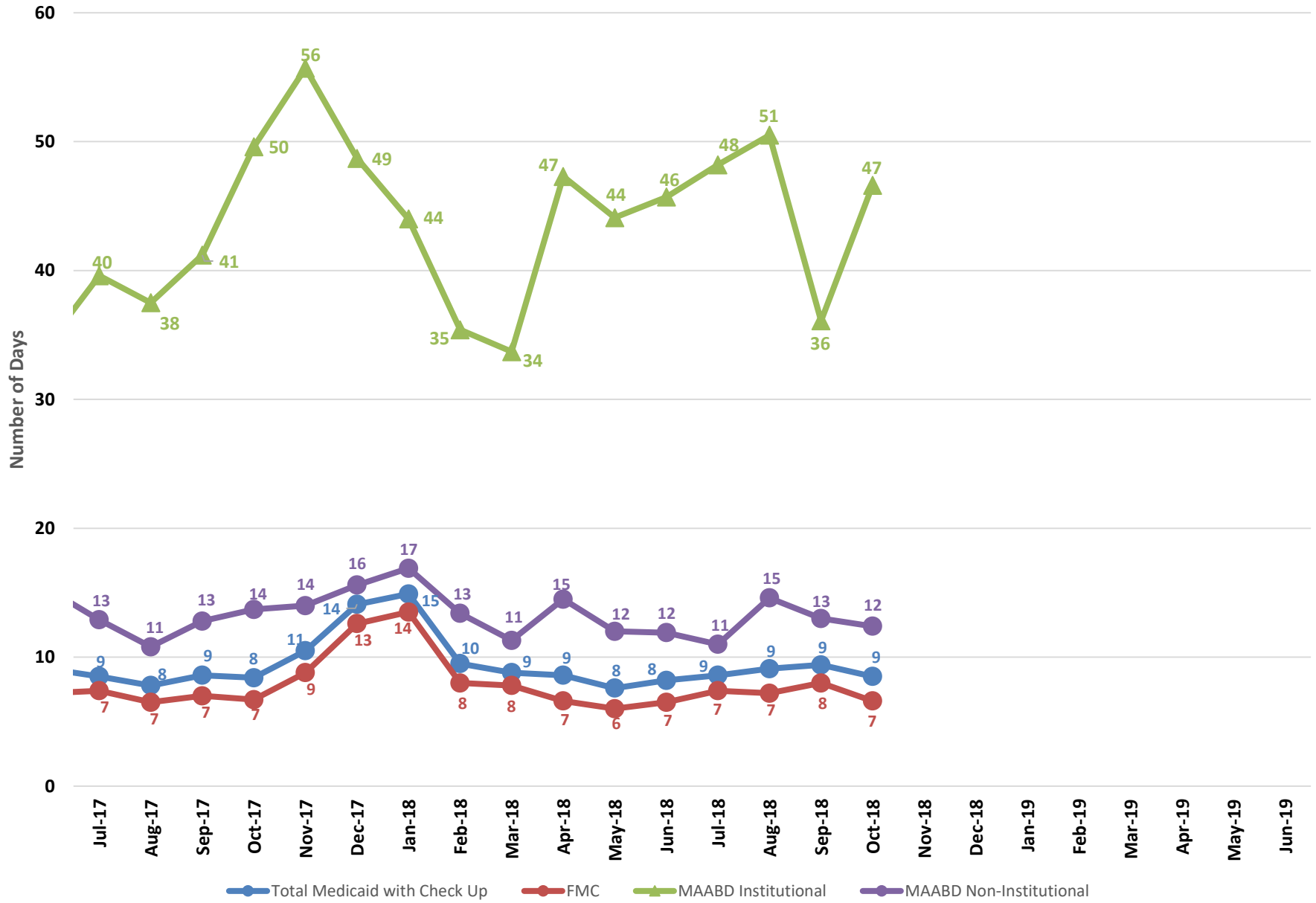
**Note:** This data reflects Family Medical (FMC), Newly Eligible Adults, Aged, Blind and Disabled (MAABD), and Nevada Check Up applications.

**Percent of Applications Processed within 15 Days - Fiscal Year Averages**

Fiscal Year	% within 15 Days
FY14	36%
FY15	59%
FY16	76%
FY17	81%
FY18	80%
FY19 YTD	83%



### Average Processing Time (Days)

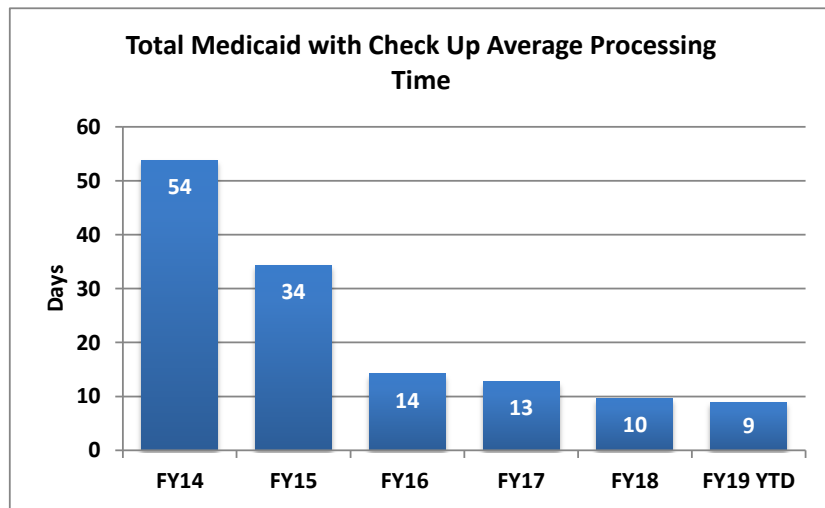


## Average Processing Time (Days)

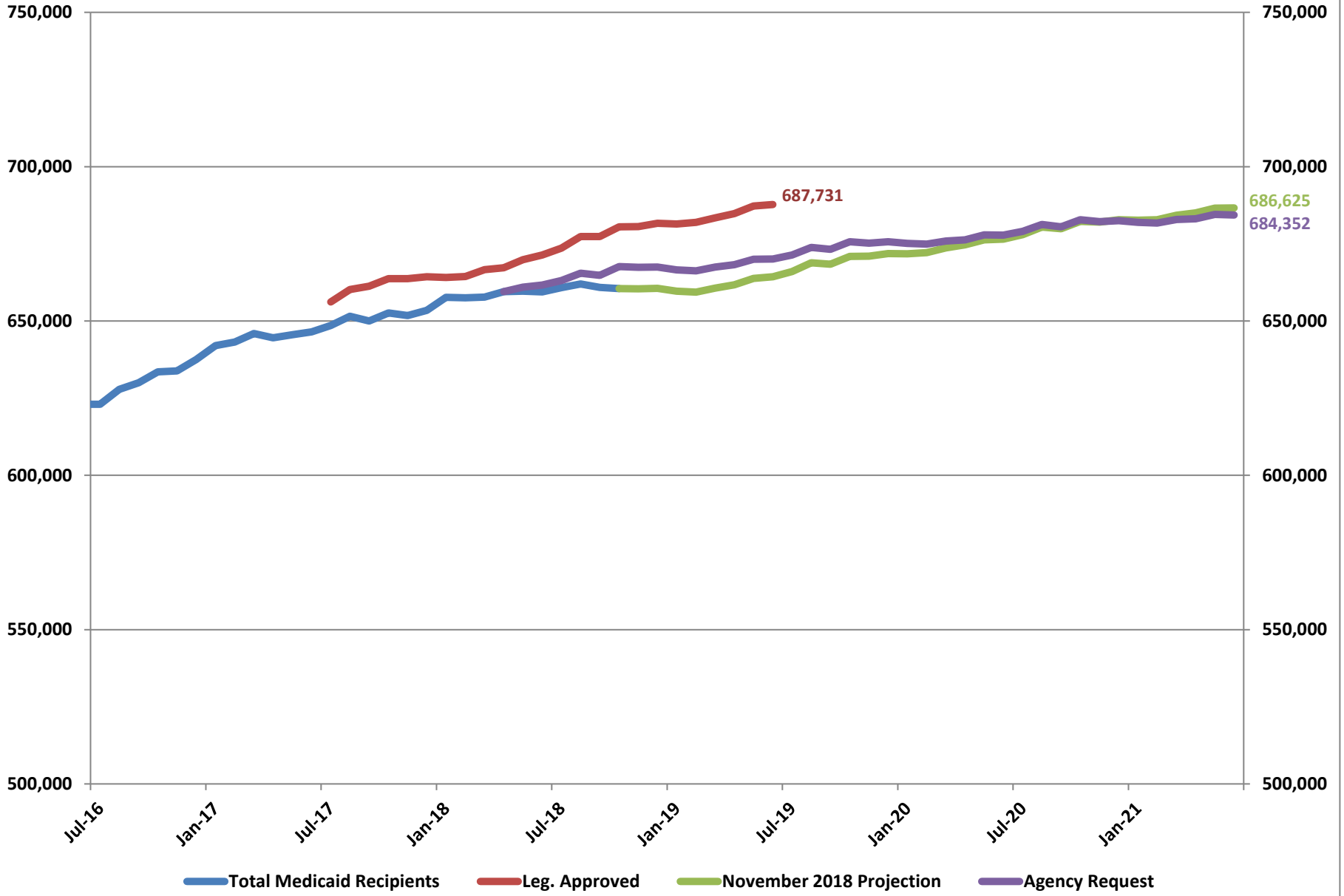
Month	Total Medicaid with Check Up	FMC	MAABD Institutional	MAABD Non-Institutional
Jul-17	9	7	40	13
Aug-17	8	7	38	11
Sep-17	9	7	41	13
Oct-17	8	7	50	14
Nov-17	11	9	56	14
Dec-17	14	13	49	16
Jan-18	15	14	44	17
Feb-18	10	8	35	13
Mar-18	9	8	34	11
Apr-18	9	7	47	15
May-18	8	6	44	12
Jun-18	8	7	46	12
Jul-18	9	7	48	11
Aug-18	9	7	51	15
Sep-18	9	8	36	13
Oct-18	9	7	47	12
Nov-18				
Dec-18				
Jan-19				
Feb-19				
Mar-19				
Apr-19				
May-19				
Jun-19				

### Fiscal Year Averages

Fiscal Year	Total Medicaid with Check Up	FMC	MAABD Institutional	MAABD Non-Institutional
<b>FY14</b>	54			
<b>FY15</b>	34	22	69	45
<b>FY16</b>	14	10	63	30
<b>FY17</b>	13	12	51	14
<b>FY18</b>	10	8	44	13
<b>FY19 YTD</b>	9	7	45	13



# Total Medicaid Recipients



## Total Medicaid Recipients

**FY16 & FY17 Biennium**

Month	Total Medicaid Recipients
Jul-15	582,531
Aug-15	586,654
Sep-15	594,359
Oct-15	599,701
Nov-15	602,421
Dec-15	608,812
Jan-16	614,216
Feb-16	620,541
Mar-16	623,109
Apr-16	621,250
May-16	622,259
Jun-16	622,986
Jul-16	623,002
Aug-16	627,802
Sep-16	629,956
Oct-16	633,535
Nov-16	634,037
Dec-16	637,501
Jan-17	642,028
Feb-17	643,194
Mar-17	645,963
Apr-17	644,535
May-17	645,540
Jun-17	646,464

**FY18 & FY19 Biennium**

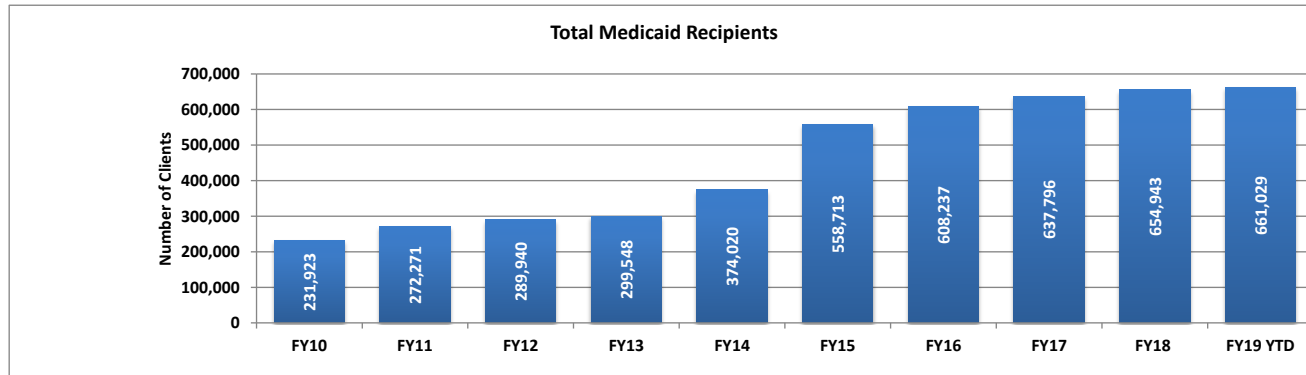
Month	Total Medicaid Recipients	Leg. Approved	Agency Request	November 2018 Projection
Jul-17	648,513	656,163		
Aug-17	651,526	660,148		
Sep-17	650,002	661,255		
Oct-17	652,613	663,747		
Nov-17	651,756	663,722		
Dec-17	653,456	664,345		
Jan-18	657,620	664,076		
Feb-18	657,515	664,436		
Mar-18	657,751	666,637		
Apr-18	659,505	667,258	659,500	
May-18	659,677	669,834	660,977	
Jun-18	659,387	671,362	661,657	
Jul-18	660,791	673,606	663,103	
Aug-18	661,988	677,370	665,488	
Sep-18	660,881	677,385	664,766	
Oct-18	660,456	680,535	667,651	660,456
Nov-18		680,603	667,408	660,434
Dec-18		681,627	667,497	660,539
Jan-19		681,422	666,513	659,636
Feb-19		681,965	666,272	659,343
Mar-19		683,378	667,486	660,620
Apr-19		684,779	668,252	661,689
May-19		687,226	670,034	663,795
Jun-19		687,731	670,040	664,337

**FY20 & FY21 Biennium**

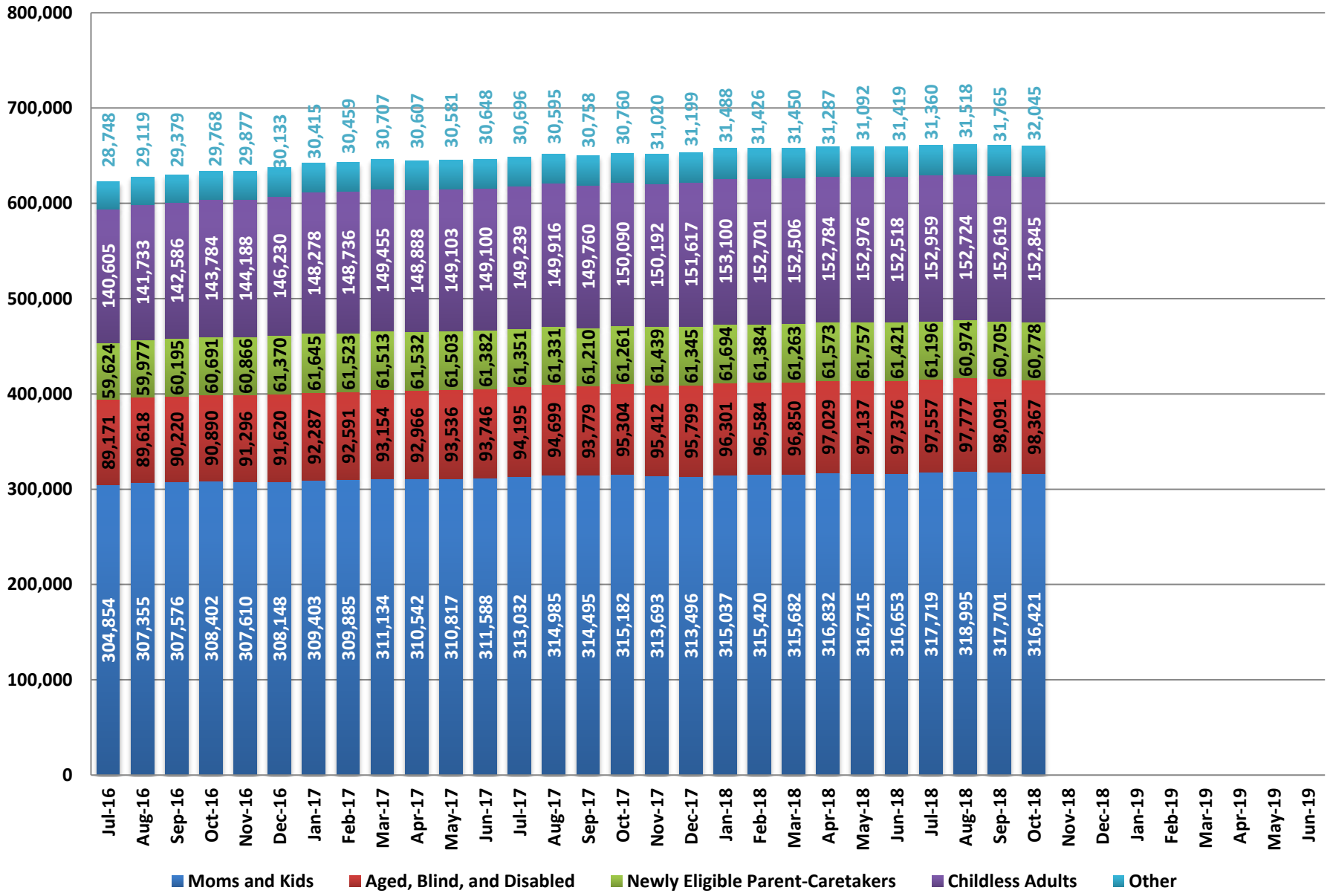
Month	Agency Request	November 2018 Projection
Jul-19	671,408	666,029
Aug-19	673,863	668,822
Sep-19	673,225	668,417
Oct-19	675,670	670,945
Nov-19	675,231	670,994
Dec-19	675,649	671,822
Jan-20	675,137	671,775
Feb-20	674,865	672,129
Mar-20	675,914	673,641
Apr-20	676,299	674,636
May-20	677,870	676,310
Jun-20	677,819	676,534
Jul-20	679,014	678,003
Aug-20	681,295	680,417
Sep-20	680,492	679,879
Oct-20	682,781	682,244
Nov-20	682,147	682,068
Dec-20	682,504	682,766
Jan-21	681,966	682,609
Feb-21	681,723	682,823
Mar-21	682,854	684,222
Apr-21	683,127	685,023
May-21	684,525	686,537
Jun-21	684,352	686,625

**Fiscal Year Averages**

Fiscal Year	Total Medicaid Recipients	Percent Change
<b>FY10</b>	231,923	
<b>FY11</b>	272,271	17.4%
<b>FY12</b>	289,940	6.5%
<b>FY13</b>	299,548	3.3%
<b>FY14</b>	374,020	24.9%
<b>FY15</b>	558,713	49.4%
<b>FY16</b>	608,237	8.9%
<b>FY17</b>	637,796	4.9%
<b>FY18</b>	654,943	2.7%
<b>FY19 YTD</b>	661,029	0.9%



# Medicaid Caseloads by Category



## Medicaid Caseloads

**Caseload by Month**

Month	Moms and Kids	Aged, Blind, and Disabled	Newly Eligible Parent-Caretakers	Childless Adults	Other	Total
Jul-16	304,854	89,171	59,624	140,605	28,748	623,002
Aug-16	307,355	89,618	59,977	141,733	29,119	627,802
Sep-16	307,576	90,220	60,195	142,586	29,379	629,956
Oct-16	308,402	90,890	60,691	143,784	29,768	633,535
Nov-16	307,610	91,296	60,866	144,188	29,877	633,837
Dec-16	308,148	91,620	61,370	146,230	30,133	637,501
Jan-17	309,403	92,287	61,645	148,278	30,415	642,028
Feb-17	309,885	92,591	61,523	148,736	30,459	643,194
Mar-17	311,134	93,154	61,513	149,455	30,707	645,963
Apr-17	310,542	92,966	61,532	148,888	30,607	644,535
May-17	310,817	93,536	61,503	149,103	30,581	645,540
Jun-17	311,588	93,746	61,382	149,100	30,648	646,464
Jul-17	313,032	94,195	61,351	149,239	30,696	648,513
Aug-17	314,985	94,699	61,331	149,916	30,595	651,526
Sep-17	314,495	93,779	61,210	149,760	30,758	650,002
Oct-17	315,182	95,304	61,261	150,090	30,760	652,597
Nov-17	313,693	95,412	61,439	150,192	31,020	651,756
Dec-17	313,496	95,799	61,345	151,617	31,199	653,456
Jan-18	315,037	96,301	61,694	153,100	31,488	657,620
Feb-18	315,420	96,584	61,384	152,701	31,426	657,515
Mar-18	315,682	96,850	61,263	152,506	31,450	657,751
Apr-18	316,832	97,029	61,573	152,784	31,287	659,505
May-18	316,715	97,137	61,757	152,976	31,092	659,677
Jun-18	316,653	97,376	61,421	152,518	31,419	659,387
Jul-18	317,719	97,557	61,196	152,959	31,360	660,791
Aug-18	318,995	97,777	60,974	152,724	31,518	661,988
Sep-18	317,701	98,091	60,705	152,619	31,765	660,881
Oct-18	316,421	98,367	60,778	152,845	32,045	660,456
Nov-18						
Dec-18						
Jan-19						
Feb-19						
Mar-19						
Apr-19						
May-19						
Jun-19						

**Month over Month Change in Caseload**

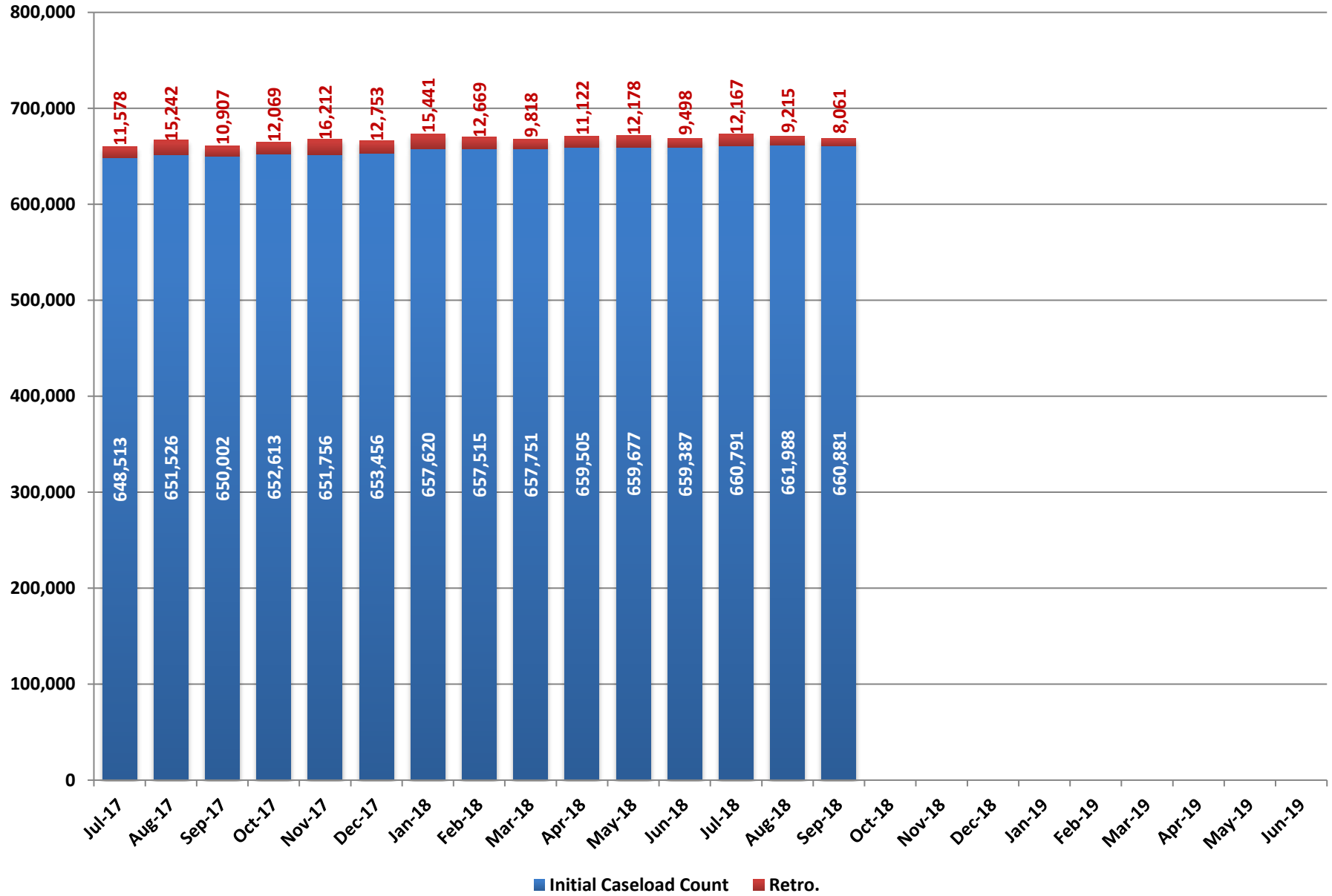
Month	Moms and Kids	Aged, Blind, and Disabled	Newly Eligible Parent-Caretakers	Childless Adults	Other	Total
Jul-16	547	511	(490)	(523)	17	62
Aug-16	2,501	447	353	1,128	371	4,800
Sep-16	221	602	218	853	260	2,154
Oct-16	826	670	496	1,198	389	3,579
Nov-16	(792)	406	175	404	109	302
Dec-16	538	324	504	2,042	256	3,664
Jan-17	1,255	667	275	2,048	282	4,527
Feb-17	482	304	(122)	458	44	1,166
Mar-17	1,249	563	(10)	719	248	2,769
Apr-17	(592)	(188)	19	(567)	(100)	(1,428)
May-17	275	570	(29)	215	(26)	1,005
Jun-17	771	210	(121)	(3)	67	924
Jul-17	1,444	449	(31)	139	48	2,049
Aug-17	1,953	504	(20)	677	(101)	3,013
Sep-17	(490)	(920)	(121)	(156)	163	(1,524)
Oct-17	687	1,525	51	330	2	2,595
Nov-17	(1,489)	108	178	102	260	(841)
Dec-17	(197)	387	(94)	1,425	179	1,700
Jan-18	1,541	502	349	1,483	289	4,164
Feb-18	383	283	(310)	(399)	(62)	(105)
Mar-18	262	266	(121)	(195)	24	236
Apr-18	1,150	179	310	278	(163)	1,754
May-18	(117)	108	184	192	(195)	172
Jun-18	(62)	239	(336)	(458)	327	(290)
Jul-18	1,066	181	(225)	441	(59)	1,404
Aug-18	1,276	220	(222)	(235)	158	1,197
Sep-18	(1,294)	314	(269)	(105)	247	(1,107)
Oct-18	(1,280)	276	73	226	280	(425)
Nov-18						
Dec-18						
Jan-19						
Feb-19						
Mar-19						
Apr-19						
May-19						
Jun-19						

Note: Other includes Child Welfare, County Match, Waivers, CHIP to Medicaid, and other minor caseloads.

**Fiscal Year Average Caseload**

Fiscal Year	Moms and Kids	Aged, Blind, and Disabled	Newly Eligible Parent-Caretakers	Childless Adults	Other	Total
FY14	247,913	72,442	11,353	25,852	16,470	374,031
FY15	291,013	79,931	47,528	116,729	23,526	558,726
FY16	299,439	85,818	58,284	136,771	27,871	608,182
FY17	308,943	91,758	60,985	146,057	30,036	637,779
FY18	315,102	95,872	61,419	151,450	31,099	654,942
FY19 YTD	317,709	97,948	60,913	152,787	31,672	661,029

## Total Medicaid - Initial and Retroactive Caseload Counts





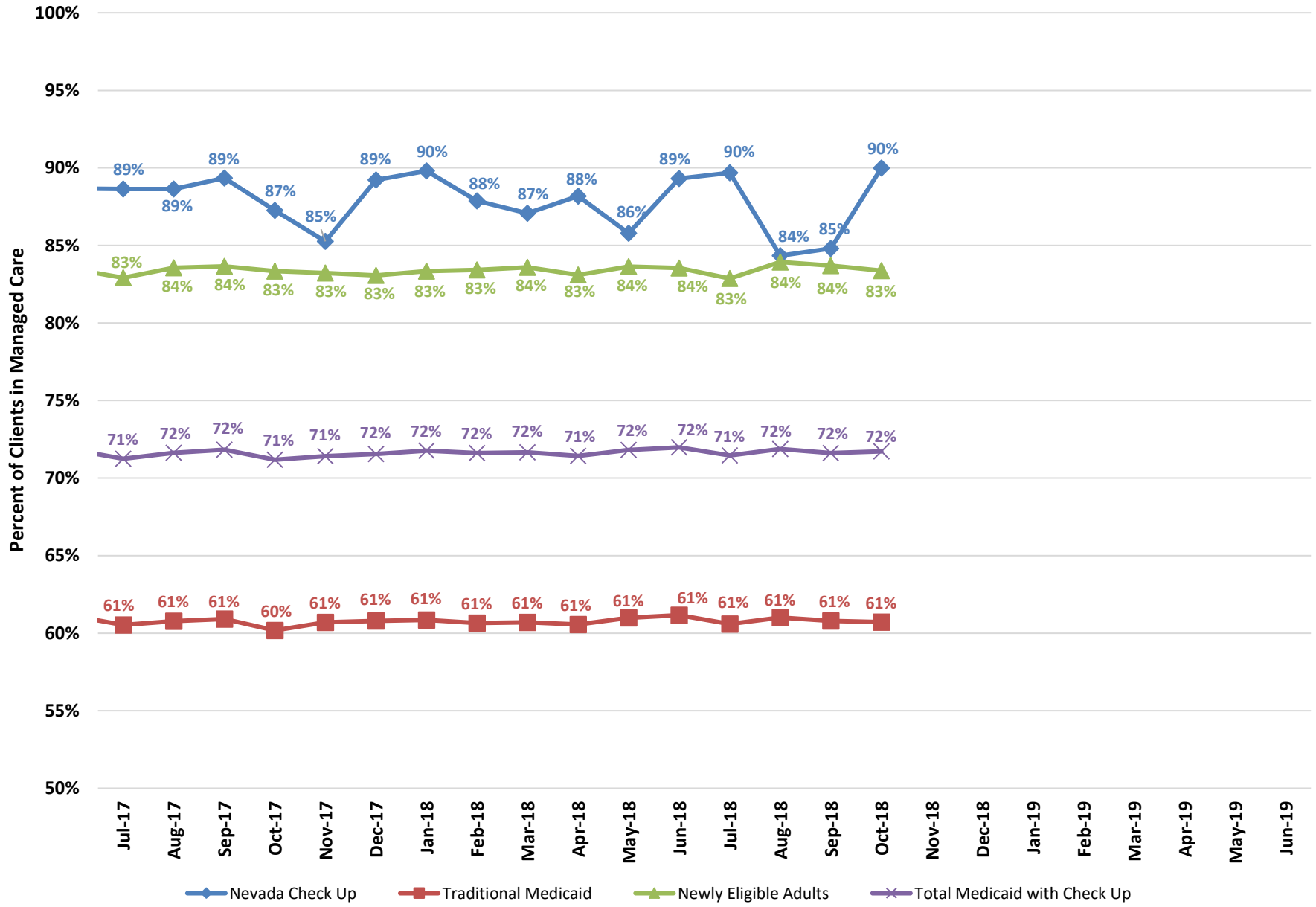
**Total Medicaid - Initial and Retroactive Caseload Counts**

	FMC				Aged				Blind and Disabled				Total MAABD				Total Medicaid			
	Initial Caseload Count	Retro.	Caseload with Retro.	% Retro.	Initial Caseload Count	Retro.	Caseload with Retro.	% Retro	Initial Caseload Count	Retro.	Caseload with Retro.	% Retro	Initial Caseload Count	Retro.	Caseload with Retro.	% Retro	Initial Caseload Count	Retro.	Caseload with Retro.	% Retro
Jul-17	537,079	10,465	547,544	1.9%	12,834	145	12,979	1.1%	41,969	360	42,329	0.9%	100,584	1,008	101,592	1.0%	648,513	11,578	660,091	1.8%
Aug-17	539,698	14,017	553,715	2.6%	12,893	136	13,029	1.1%	42,177	440	42,617	1.0%	101,116	1,094	102,210	1.1%	651,526	15,242	666,768	2.3%
Sep-17	538,976	9,786	548,762	1.8%	12,674	165	12,839	1.3%	41,364	331	41,695	0.8%	100,124	989	101,113	1.0%	650,002	10,907	660,909	1.7%
Oct-17	540,063	10,505	550,568	1.9%	12,966	263	13,229	2.0%	42,260	570	42,830	1.3%	101,672	1,438	103,110	1.4%	652,613	12,069	664,682	1.8%
Nov-17	538,882	14,982	553,864	2.8%	12,972	176	13,148	1.4%	42,221	374	42,595	0.9%	101,787	1,126	102,913	1.1%	651,756	16,212	667,968	2.5%
Dec-17	540,244	11,687	551,931	2.2%	13,066	166	13,232	1.3%	42,252	309	42,561	0.7%	102,164	950	103,114	0.9%	653,456	12,753	666,209	2.0%
Jan-18	543,745	14,159	557,904	2.6%	13,128	178	13,306	1.4%	42,322	415	42,737	1.0%	102,652	1,132	103,784	1.1%	657,620	15,441	673,061	2.3%
Feb-18	543,323	11,585	554,908	2.1%	13,159	130	13,289	1.0%	42,297	370	42,667	0.9%	103,000	963	103,963	0.9%	657,515	12,669	670,184	1.9%
Mar-18	543,242	8,771	552,013	1.6%	13,225	178	13,403	1.3%	42,370	317	42,687	0.7%	103,256	922	104,178	0.9%	657,751	9,818	667,569	1.5%
Apr-18	544,962	10,007	554,969	1.8%	13,220	148	13,368	1.1%	42,429	328	42,757	0.8%	103,481	967	104,448	0.9%	659,505	11,122	670,627	1.7%
May-18	544,915	11,102	556,017	2.0%	13,275	111	13,386	0.8%	42,361	304	42,665	0.7%	103,627	911	104,538	0.9%	659,677	12,178	671,855	1.8%
Jun-18	544,170	8,525	552,695	1.6%	13,335	107	13,442	0.8%	42,340	272	42,612	0.6%	103,911	839	104,750	0.8%	659,387	9,498	668,885	1.4%
Jul-18	545,367	11,236	556,603	2.1%	13,373	70	13,443	0.5%	42,289	281	42,570	0.7%	104,109	790	104,899	0.8%	660,791	12,167	672,958	1.8%
Aug-18	546,202	8,519	554,721	1.6%	13,458	59	13,517	0.4%	42,318	187	42,505	0.4%	104,400	570	104,970	0.5%	661,988	9,215	671,203	1.4%
Sep-18	544,785	7,544	552,329	1.4%	13,509	8	13,517	0.1%	42,338	147	42,485	0.3%	104,719	422	105,141	0.4%	660,881	8,061	668,942	1.2%
Oct-18	543,977				13,612				42,607				105,050				660,456			
Nov-18																				
Dec-18																				
Jan-19																				
Feb-19																				
Mar-19																				
Apr-19																				
May-19																				
Jun-19																				
Jul-19																				

**Fiscal Year Averages**

Fiscal Year	FMC				Aged				Blind and Disabled				Total MAABD				Total Medicaid			
	Initial Caseload Count	Retro.	Caseload with Retro.	% Retro.	Initial Caseload Count	Retro.	Caseload with Retro.	% Retro	Initial Caseload Count	Retro.	Caseload with Retro.	% Retro	Initial Caseload Count	Retro.	Caseload with Retro.	% Retro	Initial Caseload Count	Retro.	Caseload with Retro.	% Retro
FY14	287,197	33,884	321,081	11.1%	10,974	298	11,272	2.7%	34,629	1,380	36,009	4.0%	77,858	2,402	80,260	3.1%	374,043	36,454	410,497	9.3%
FY15	463,507	20,609	484,116	4.5%	11,623	243	11,866	2.1%	37,622	537	38,159	1.4%	85,646	1,523	87,169	1.8%	558,774	22,319	581,092	4.0%
FY16	505,872	12,322	518,194	2.4%	12,181	173	12,355	1.4%	39,686	352	40,037	0.9%	91,761	1,159	92,920	1.3%	608,237	13,600	621,837	2.2%
FY17	529,040	11,158	540,198	2.1%	12,699	172	12,870	1.4%	41,562	329	41,891	0.8%	97,926	993	98,919	1.0%	637,798	12,258	650,056	1.9%
FY18	541,608	11,299	552,908	2.1%	13,062	159	13,221	1.2%	42,197	366	42,563	0.9%	102,281	1,028	103,310	1.0%	654,943	12,457	667,401	1.9%
FY19 TYD	545,083	9,100	554,551	1.7%	13,488	46	13,492	0.3%	42,388	205	42,520	0.5%	104,570	594	105,003	0.6%	661,029	9,814	671,034	1.5%

### Percent in Managed Care by Client Type

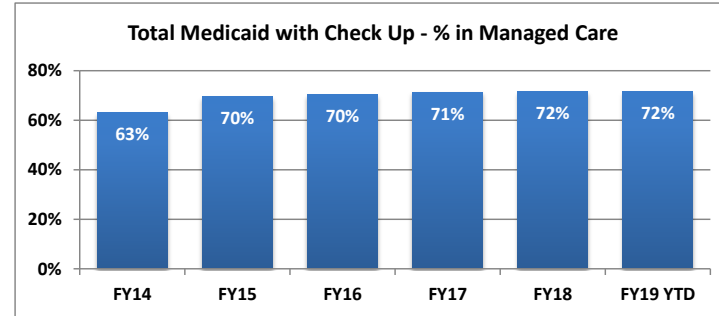


### Percent of Medicaid Clients in Managed Care

Month	Nevada Check Up			Traditional Medicaid			Newly Eligible Adults			Total Medicaid with Check Up		
	Managed Care Enrollment	Total Caseload	% in Managed Care	Managed Care Enrollment	Total Caseload net of SLMB	% in Managed Care	Managed Care Enrollment	Total Caseload	% in Managed Care	Managed Care Enrollment	Total Caseload net of SLMB	% in Managed Care
Jul-17	23,375	26,369	89%	271,098	447,823	61%	175,004	211,060	83%	469,477	658,883	71%
Aug-17	23,581	26,604	89%	273,685	450,312	61%	176,921	211,736	84%	474,187	662,048	72%
Sep-17	24,067	26,935	89%	273,748	449,444	61%	176,858	211,428	84%	474,673	660,872	72%
Oct-17	24,008	27,515	87%	272,130	452,179	60%	176,515	211,805	83%	472,653	663,984	71%
Nov-17	23,338	27,372	85%	273,716	450,947	61%	176,442	212,028	83%	473,496	662,975	71%
Dec-17	23,950	26,842	89%	273,938	450,648	61%	177,263	213,384	83%	475,151	664,032	72%
Jan-18	24,531	27,314	90%	275,856	453,285	61%	179,385	215,236	83%	479,772	668,521	72%
Feb-18	24,452	27,825	88%	275,591	454,337	61%	178,985	214,570	83%	479,028	668,907	72%
Mar-18	24,289	27,893	87%	276,151	454,917	61%	179,117	214,266	84%	479,557	669,183	72%
Apr-18	24,435	27,713	88%	276,052	455,809	61%	178,554	214,869	83%	479,041	670,678	71%
May-18	23,861	27,813	86%	277,963	455,730	61%	179,883	215,101	84%	481,707	670,831	72%
Jun-18	24,479	27,406	89%	278,584	455,512	61%	179,198	214,489	84%	482,261	670,001	72%
Jul-18	25,170	28,066	90%	277,091	457,264	61%	177,917	214,714	83%	480,178	671,978	71%
Aug-18	24,129	28,608	84%	280,235	459,334	61%	179,828	214,260	84%	484,192	673,594	72%
Sep-18	23,769	28,027	85%	278,434	457,989	61%	178,996	213,869	84%	481,199	671,858	72%
Oct-18	25,328	28,144	90%	277,632	457,263	61%	178,585	214,196	83%	481,545	671,459	72%
Nov-18												
Dec-18												
Jan-19												
Feb-19												
Mar-19												
Apr-19												
May-19												
Jun-19												

**Fiscal Year Averages**

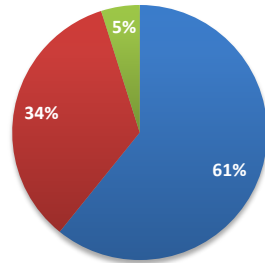
	Managed Care Enrollment	% in Managed Care
FY14	243,142	63%
FY15	395,743	70%
FY16	437,740	70%
FY17	462,312	71%
FY18	476,750	72%
FY19 YTD	481,779	72%



Note: Traditional Medicaid totals include both cat 11 (CHIP Expansion), and cat 12 (TANF/CHAP) populations.

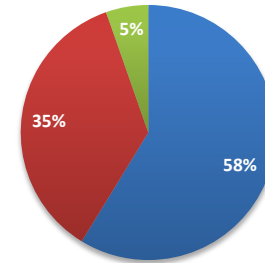
## Managed Care by Client Type

### Amerigroup



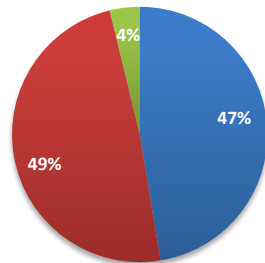
■ Traditional Medicaid ■ Newly Eligible Adults ■ Nevada Check Up

### Nevada Health Plan



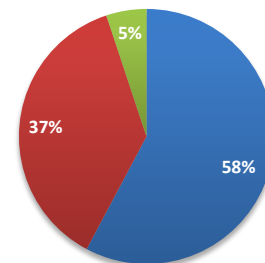
■ Traditional Medicaid ■ Newly Eligible Adults ■ Nevada Check Up

### Silver Summit



■ Traditional Medicaid ■ Newly Eligible Adults ■ Nevada Check Up

### Managed Care by Client Type - Totals



■ Traditional Medicaid ■ Newly Eligible Adults ■ Nevada Check Up

**Managed Care Providers**

Month	Amerigroup								Health Plan of Nevada								Total Managed Care Enrollment
	Traditional Medicaid	% of Traditional Medicaid	Newly Eligible Adults	% of Newly Eligible	Nevada Check Up	% of Nevada Check Up	Total for Plan	% of Total	Traditional Medicaid	% of Traditional Medicaid	Newly Eligible Adults	% of Newly Eligible	Nevada Check Up	% of Nevada Check Up	Total for Plan	% of Total	
Jul-17	113,592	42%	66,248	38%	8,858	38%	188,698	41%	154,678	57%	105,971	61%	14,258	62%	274,907	59%	469,477
Aug-17	112,905	42%	65,821	38%	8,844	38%	187,570	40%	155,089	57%	105,810	61%	14,337	61%	275,236	59%	474,187
Sep-17	111,249	41%	64,672	37%	8,932	38%	184,853	40%	154,443	57%	104,698	60%	14,533	61%	273,674	58%	474,673
Oct-17	109,094	41%	63,422	37%	8,739	37%	181,255	39%	152,097	56%	103,233	59%	14,390	60%	269,720	58%	472,653
Nov-17	108,354	40%	62,040	36%	8,250	36%	178,644	38%	151,418	56%	101,623	58%	13,889	60%	266,930	57%	473,496
Dec-17	107,376	40%	60,953	35%	8,312	35%	176,641	38%	150,716	55%	100,444	58%	14,168	60%	265,328	56%	475,151
Jan-18	106,979	39%	60,277	34%	8,464	35%	175,720	37%	150,836	55%	99,870	57%	14,298	59%	265,004	56%	479,772
Feb-18	106,008	39%	59,139	34%	8,414	35%	173,561	37%	150,030	55%	98,782	56%	14,178	58%	262,990	55%	479,028
Mar-18	105,352	38%	58,666	33%	8,394	35%	172,412	36%	149,617	54%	97,834	55%	13,992	58%	261,443	55%	479,557
Apr-18	104,847	38%	57,914	32%	8,355	34%	171,116	36%	148,539	54%	96,400	54%	14,006	57%	258,945	54%	479,041
May-18	104,899	38%	57,883	32%	8,186	34%	170,968	35%	148,936	54%	95,954	53%	13,710	57%	258,600	54%	481,707
Jun-18	106,415	38%	59,104	33%	8,493	35%	174,012	36%	147,915	53%	94,493	53%	14,059	57%	256,467	53%	482,261
Jul-18	106,130	38%	59,233	33%	8,784	35%	174,147	36%	146,720	53%	93,425	53%	14,373	57%	254,518	53%	480,178
Aug-18	107,663	38%	60,459	34%	8,409	35%	176,531	36%	147,917	53%	94,012	52%	13,794	57%	255,723	53%	484,192
Sep-18	107,725	39%	60,882	34%	8,360	35%	176,967	37%	146,575	53%	93,260	52%	13,546	57%	253,381	53%	481,199
Oct-18	108,023	39%	61,760	35%	9,043	36%	178,826	37%	145,598	52%	92,311	52%	14,331	57%	252,240	52%	481,545
Nov-18																	
Dec-18																	
Jan-19																	
Feb-19																	
Mar-19																	
Apr-19																	
May-19																	
Jun-19																	

*Note:*

**Fiscal Year Averages**

Fiscal Year	Amerigroup								Health Plan of Nevada							
	Traditional Medicaid	% of Traditional Medicaid	Newly Eligible Adults	% of Newly Eligible	Nevada Check Up	% of Nevada Check Up	Total for Plan	% of Total	Traditional Medicaid	% of Traditional Medicaid	Newly Eligible Adults	% of Newly Eligible	Nevada Check Up	% of Nevada Check Up	Total for Plan	% of Total
FY14	110,819	45%	54,962	42%	7,744	39%	173,525	44%	133,741	55%	76,332	58%	12,146	61%	222,218	56%
FY15	112,119	44%	63,560	40%	7,655	39%	183,334	42%	143,176	56%	95,741	60%	12,020	61%	250,936	58%
FY16	114,584	44%	65,662	40%	8,222	39%	188,468	42%	148,317	56%	100,569	60%	13,030	61%	261,916	58%
FY17	115,016	43%	67,149	39%	8,638	38%	190,802	41%	151,854	57%	104,861	61%	13,940	62%	270,655	59%
FY18	108,089	40%	61,345	35%	8,520	36%	177,954	38%	151,193	55%	100,426	57%	14,152	59%	265,770	56%
FY19 YTD	107,385	39%	60,584	34%	8,649	35%	176,618	37%	146,703	53%	93,252	52%	14,011	57%	253,966	53%

Managed Care Providers - Continued

Month	Silver Summit								Aetna								Total Managed Care Enrollment
	Traditional Medicaid	% of Traditional Medicaid	Newly Eligible Adults	% of Newly Eligible	Nevada Check Up	% of Nevada Check Up	Total for Plan	% of Total	Traditional Medicaid	% of Traditional Medicaid	Newly Eligible Adults	% of Newly Eligible	Nevada Check Up	% of Nevada Check Up	Total for Plan	% of Total	
Jul-17	1,618	0.1%	1,547	0.2%	169	0.2%	3,334	0.2%	1,210	0.4%	1,238	0.7%	90	0.4%	2,538	0.5%	469,477
Aug-17	5,691	0.6%	5,290	0.9%	400	0.7%	11,381	0.7%									474,187
Sep-17	8,056	2.1%	7,488	3.0%	602	1.7%	16,146	2.4%									474,673
Oct-17	10,939	2.9%	9,860	4.2%	879	2.5%	21,678	3.4%									472,653
Nov-17	13,944	4.0%	12,779	5.6%	1,199	3.7%	27,922	4.6%									473,496
Dec-17	15,846	5.1%	15,866	7.2%	1,470	5.1%	33,182	5.9%									475,151
Jan-18	18,041	5.8%	19,238	9.0%	1,769	6.1%	39,048	7.0%									479,772
Feb-18	19,553	6.5%	21,064	10.7%	1,860	7.2%	42,477	8.1%									479,028
Mar-18	21,182	7.7%	22,617	12.6%	1,903	7.8%	45,702	9.5%									479,557
Apr-18	22,666	8.2%	24,240	13.6%	2,074	8.5%	48,980	10.2%									479,041
May-18	24,128	8.7%	26,046	14.5%	1,965	8.2%	52,139	10.8%									481,707
Jun-18	24,254	8.7%	25,601	14.3%	1,927	7.9%	51,782	10.7%									482,261
Jul-18	24,241	9.0%	25,259	14.0%	2,013	8.0%	51,513	11.0%									480,178
Aug-18	24,655	8.8%	25,357	14.1%	1,926	8.0%	51,938	10.7%									484,192
Sep-18	24,134	8.7%	24,854	13.9%	1,863	7.8%	50,851	10.6%									481,199
Oct-18	24,011	8.6%	24,514	13.7%	1,954	7.7%	50,479	10.5%									481,545
Nov-18																	
Dec-18																	
Jan-19																	
Feb-19																	
Mar-19																	
Apr-19																	
May-19																	
Jun-19																	

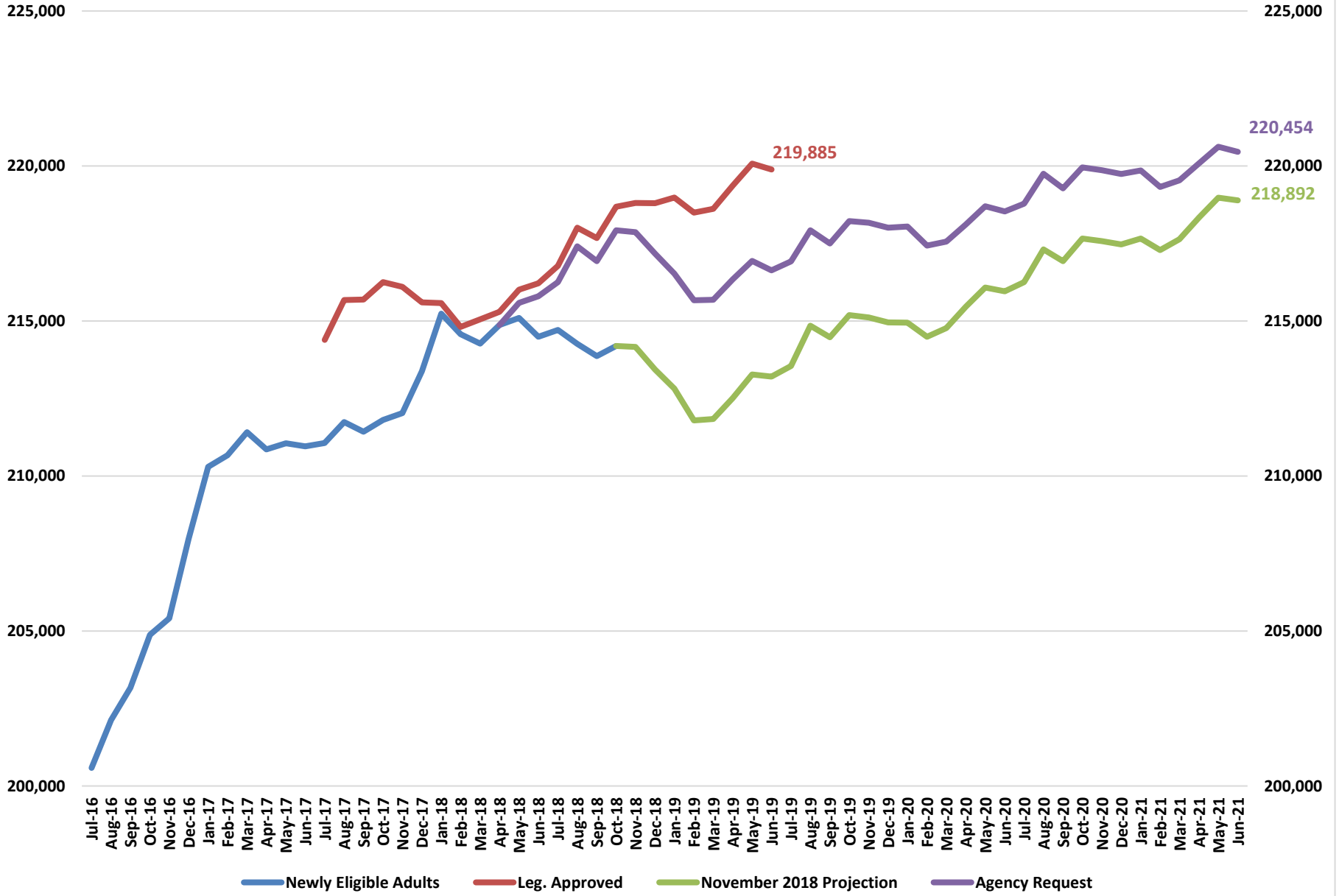
Note: Traditional Medicaid totals include both cat 11 (CHIP Expansion), and cat 12 (TANF/CHAP) populations.

Fiscal Year Averages

Fiscal Year	Silver Summit								Aetna							
	Traditional Medicaid	% of Traditional Medicaid	Newly Eligible Adults	% of Newly Eligible	Nevada Check Up	% of Nevada Check Up	Total for Plan	% of Total	Traditional Medicaid	% of Traditional Medicaid	Newly Eligible Adults	% of Newly Eligible	Nevada Check Up	% of Nevada Check Up	Total for Plan	% of Total
FY14																
FY15																
FY16																
FY17																
FY18	15,493	5.0%	15,970	8.0%	1,351	5.0%	32,814	6.1%	1,210	0.4%	1,238	0.7%	90	0.4%	2,538	0.5%
FY19	24,260	8.8%	24,996	13.9%	1,939	7.9%	51,195	10.7%	0	-	0	-	0	-	0	-

Note: Aetna Better Health only participated in the Managed Care program for two months. Their case loads for the two months are included in Totals

# Newly Eligible Adults



## Newly Eligible Adults

**FY16 & FY17 Biennium**

Month	Newly Eligible Adults
Jul-15	182,223
Aug-15	183,742
Sep-15	187,110
Oct-15	189,623
Nov-15	192,224
Dec-15	196,446
Jan-16	199,534
Feb-16	203,292
Mar-16	203,939
Apr-16	202,469
May-16	202,255
Jun-16	201,613
Jul-16	200,583
Aug-16	202,122
Sep-16	203,163
Oct-16	204,878
Nov-16	205,406
Dec-16	207,966
Jan-17	210,296
Feb-17	210,670
Mar-17	211,414
Apr-17	210,861
May-17	211,053
Jun-17	210,960

**FY18 & FY19 Biennium**

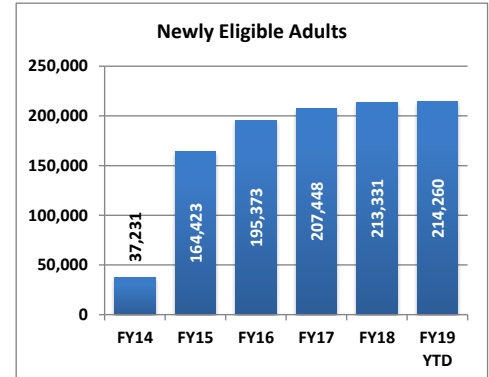
Month	Newly Eligible Adults	Leg. Approved	Agency Request	November 2018 Projection
Jul-17	211,060	214,390		
Aug-17	211,736	215,672		
Sep-17	211,428	215,691		
Oct-17	211,805	216,251		
Nov-17	212,028	216,105		
Dec-17	213,384	215,596		
Jan-18	215,236	215,576		
Feb-18	214,570	214,810		
Mar-18	214,266	215,051		
Apr-18	214,869	215,296	214,869	
May-18	215,101	216,011	215,586	
Jun-18	214,489	216,215	215,800	
Jul-18	214,714	216,778	216,253	
Aug-18	214,260	218,009	217,408	
Sep-18	213,869	217,673	216,931	
Oct-18	214,196	218,687	217,928	214,196
Nov-18		218,810	217,861	214,163
Dec-18		218,802	217,172	213,434
Jan-19		218,980	216,526	212,821
Feb-19		218,499	215,669	211,792
Mar-19		218,614	215,681	211,841
Apr-19		219,372	216,343	212,515
May-19		220,076	216,936	213,271
Jun-19		219,885	216,634	213,207

**FY20 & FY21 Biennium**

Month	Agency Request	Newly Eligible Adults
Jul-19	216,921	213,548
Aug-19	217,929	214,844
Sep-19	217,499	214,473
Oct-19	218,218	215,186
Nov-19	218,169	215,116
Dec-19	218,010	214,953
Jan-20	218,048	214,949
Feb-20	217,434	214,489
Mar-20	217,559	214,770
Apr-20	218,112	215,462
May-20	218,700	216,075
Jun-20	218,531	215,955
Jul-20	218,784	216,251
Aug-20	219,751	217,308
Sep-20	219,280	216,930
Oct-20	219,955	217,657
Nov-20	219,863	217,573
Dec-20	219,745	217,468
Jan-21	219,857	217,660
Feb-21	219,323	217,290
Mar-21	219,533	217,640
Apr-21	220,083	218,334
May-21	220,620	218,977
Jun-21	220,454	218,892

**Fiscal Year Averages**

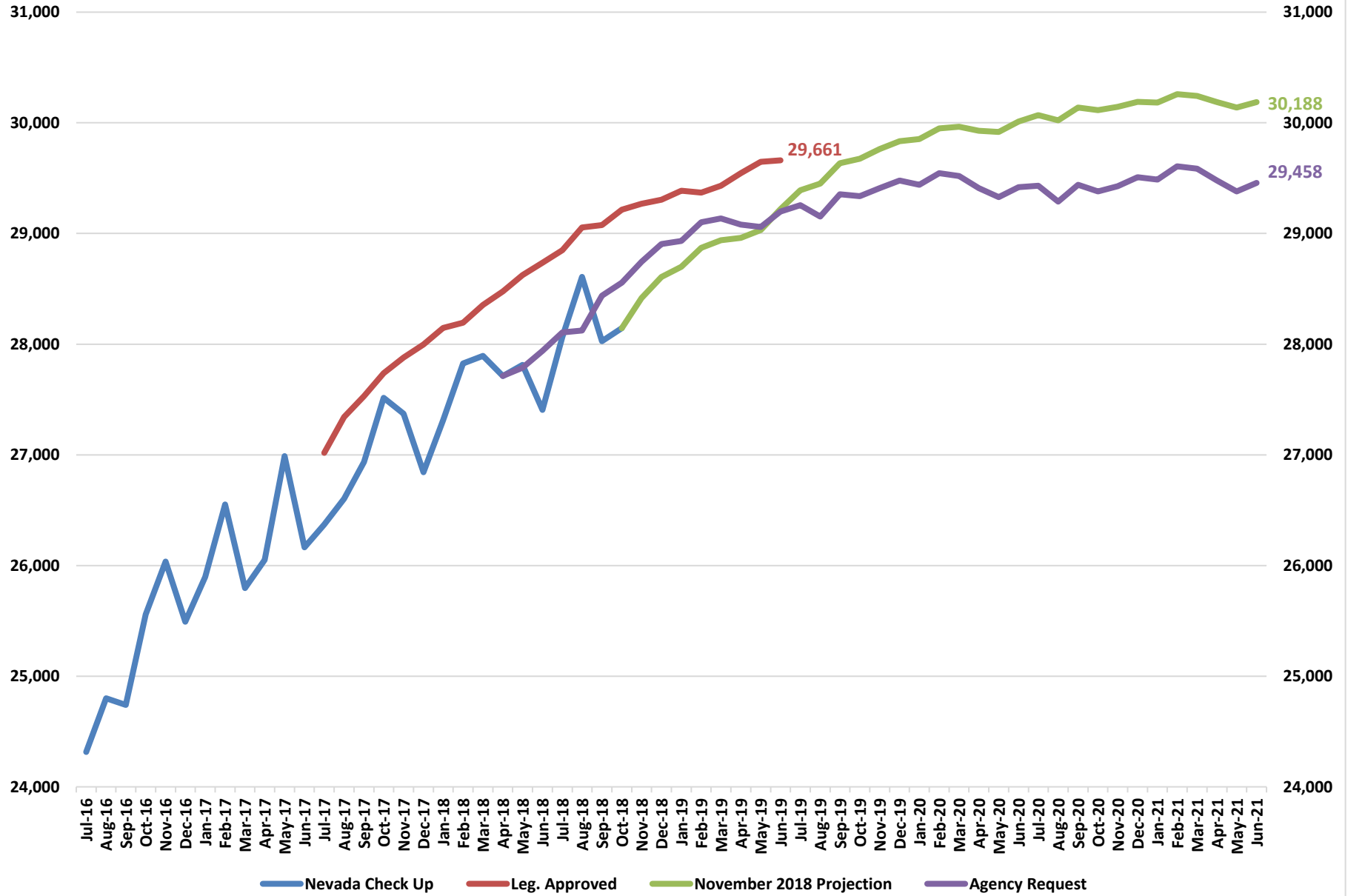
Fiscal Year	Newly Eligible Adults	Percent Change
<b>FY14</b>	37,231	
<b>FY15</b>	164,423	341.6%
<b>FY16</b>	195,373	18.8%
<b>FY17</b>	207,448	6.2%
<b>FY18</b>	213,331	2.8%
<b>FY19 YTD</b>	214,260	0.4%



**Note:** This caseload includes childless adults age 19-64 between 0%-138% FPL and parents age 19-64 between 23%-138% FPL.



# Nevada Check Up



## Nevada Check Up

**FY16 & FY17 Biennium**

Month	Nevada Check Up
Jul-15	20,995
Aug-15	21,373
Sep-15	21,154
Oct-15	22,419
Nov-15	22,742
Dec-15	22,922
Jan-16	22,211
Feb-16	23,276
Mar-16	22,471
Apr-16	23,837
May-16	24,431
Jun-16	23,728
Jul-16	24,315
Aug-16	24,801
Sep-16	24,741
Oct-16	25,558
Nov-16	26,036
Dec-16	25,492
Jan-17	25,896
Feb-17	26,551
Mar-17	25,795
Apr-17	26,050
May-17	26,989
Jun-17	26,165

**FY18 & FY19 Biennium**

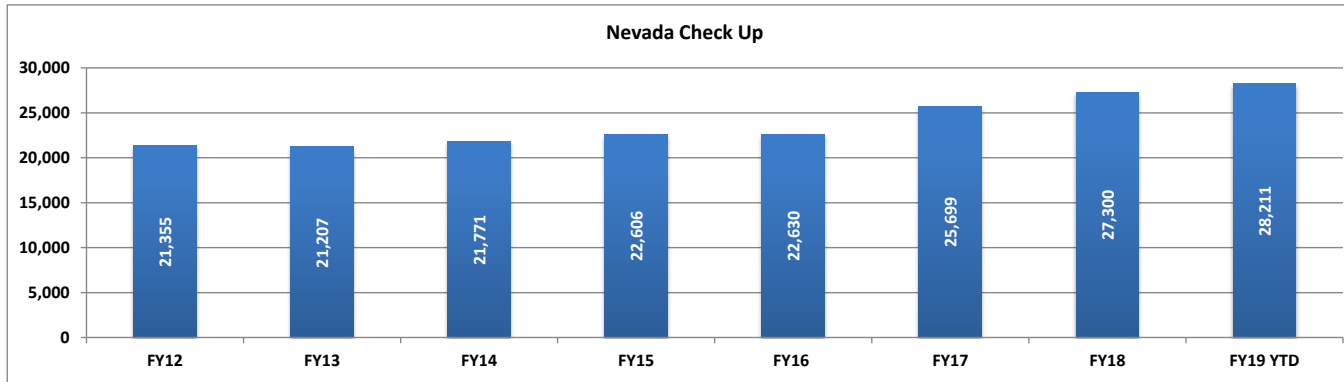
Month	Nevada Check Up	Leg. Approved	Agency Request	November 2018 Projection
Jul-17	26,369	27,018		
Aug-17	26,604	27,342		
Sep-17	26,935	27,531		
Oct-17	27,515	27,739		
Nov-17	27,372	27,880		
Dec-17	26,842	27,997		
Jan-18	27,314	28,146		
Feb-18	27,825	28,194		
Mar-18	27,893	28,354		
Apr-18	27,713	28,476	27,713	
May-18	27,813	28,625	27,786	
Jun-18	27,406	28,736	27,939	
Jul-18	28,066	28,848	28,106	
Aug-18	28,608	29,054	28,123	
Sep-18	28,027	29,076	28,438	
Oct-18	28,144	29,215	28,555	28,144
Nov-18		29,268	28,745	28,416
Dec-18		29,306	28,905	28,607
Jan-19		29,387	28,933	28,699
Feb-19		29,370	29,102	28,871
Mar-19		29,431	29,135	28,940
Apr-19		29,545	29,081	28,961
May-19		29,648	29,058	29,030
Jun-19		29,661	29,199	29,219

**FY20 & FY21 Biennium**

Month	Agency Request	Nevada Check Up
Jul-19	29,256	29,390
Aug-19	29,152	29,450
Sep-19	29,355	29,635
Oct-19	29,337	29,676
Nov-19	29,409	29,764
Dec-19	29,478	29,835
Jan-20	29,441	29,854
Feb-20	29,545	29,950
Mar-20	29,520	29,965
Apr-20	29,411	29,928
May-20	29,328	29,917
Jun-20	29,418	30,012
Jul-20	29,432	30,070
Aug-20	29,288	30,022
Sep-20	29,440	30,139
Oct-20	29,379	30,114
Nov-20	29,427	30,145
Dec-20	29,508	30,189
Jan-21	29,488	30,182
Feb-21	29,607	30,259
Mar-21	29,585	30,242
Apr-21	29,479	30,187
May-21	29,381	30,139
Jun-21	29,458	30,188

**Fiscal Year Averages**

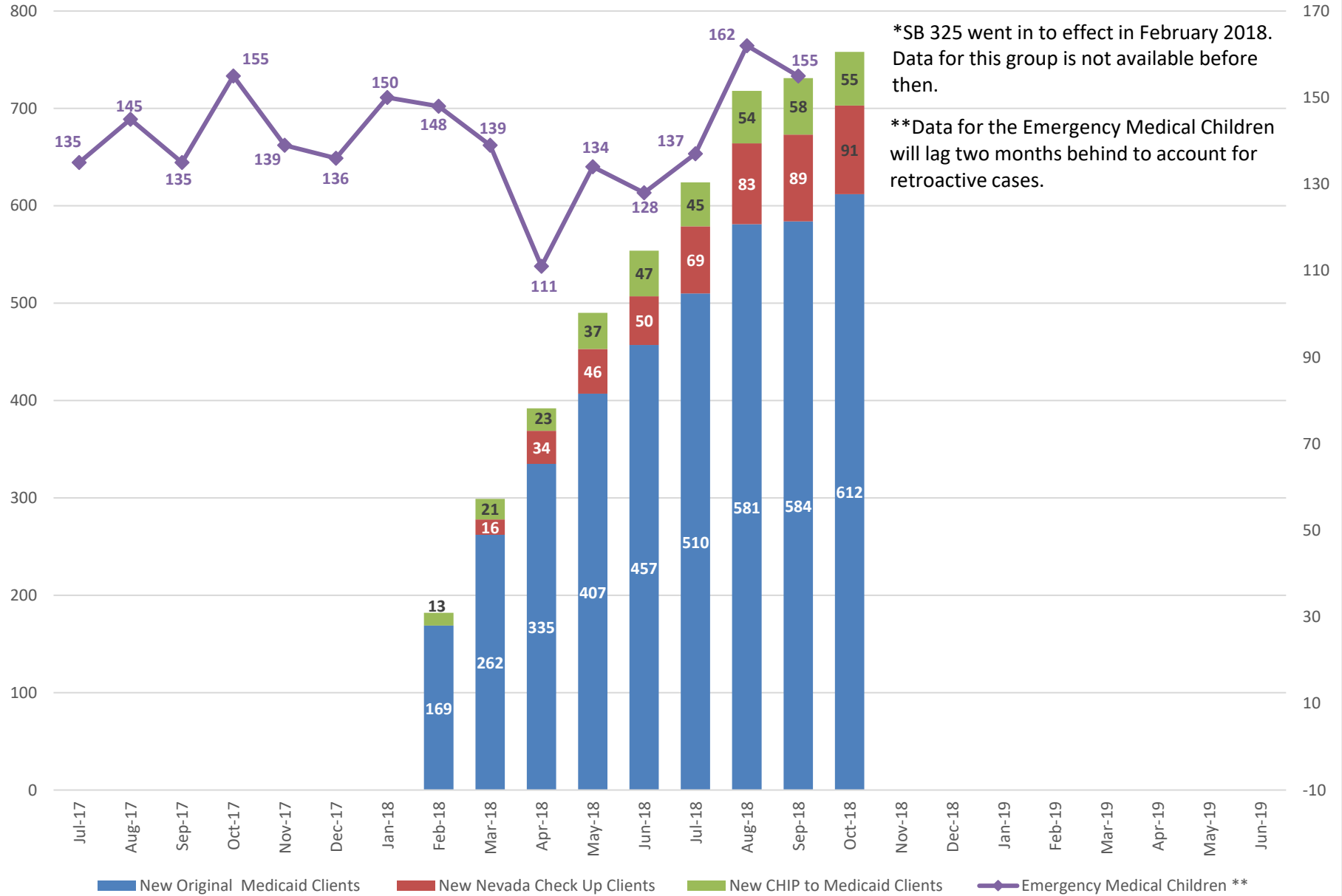
Fiscal Year	Nevada Check Up	Percent Change
<b>FY12</b>	21,355	
<b>FY13</b>	21,207	-0.7%
<b>FY14</b>	21,771	2.7%
<b>FY15</b>	22,606	3.8%
<b>FY16</b>	22,630	0.1%
<b>FY17</b>	25,699	13.6%
<b>FY18</b>	27,300	6.2%
<b>FY19 YTD</b>	28,211	3.3%



### New Clients Added Under SB 325\*

\*SB 325 went in to effect in February 2018. Data for this group is not available before then.

\*\*Data for the Emergency Medical Children will lag two months behind to account for retroactive cases.



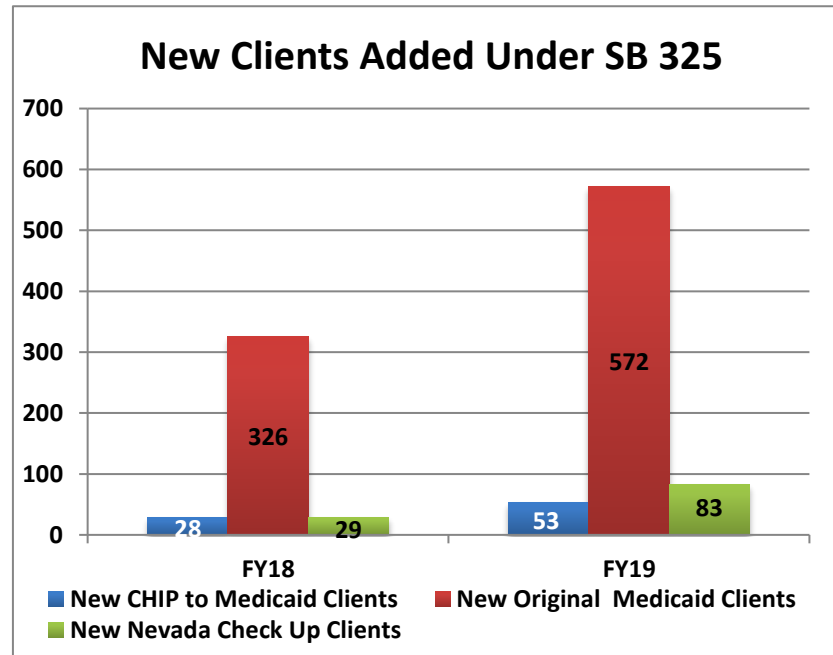
## SB 325

Month	New CHIP to Medicaid Clients	New Original Medicaid Clients	New Nevada Check Up Clients	Total New Clients
Feb-18	13	169	0	182
Mar-18	21	262	16	299
Apr-18	23	335	34	392
May-18	37	407	46	490
Jun-18	47	457	50	554
Jul-18	45	510	69	624
Aug-18	54	581	83	718
Sep-18	58	584	89	731
Oct-18	55	612	91	758
Nov-18				
Dec-18				
Jan-19				
Feb-19				
Mar-19				
Apr-19				
May-19				
Jun-19				

Note: Numbers are updated monthly to reflect the caseload with retroactive clients

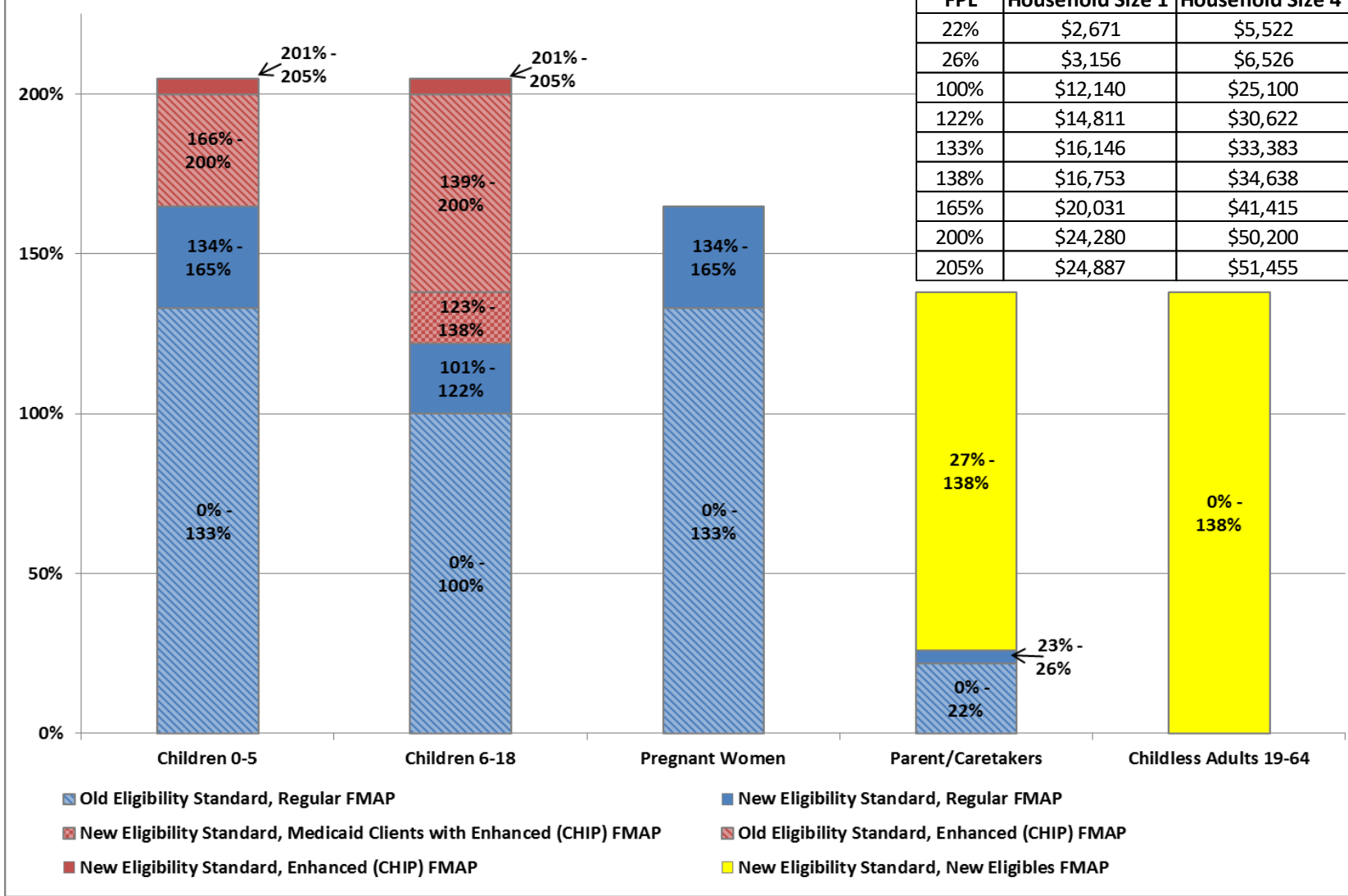
### Fiscal Year Averages

Fiscal Year	New CHIP to Medicaid Clients	New Original Medicaid Clients	New Nevada Check Up Clients	Total New Clients
FY18	28	326	29	383
FY19	53	572	83	708



SB 325 allowed alien children who are younger than 18 to enroll in Medicaid programs or Nevada Check Up without the 5-year waitout period.

## Medicaid Eligibility and FMAP



## Federal Medical Assistance Percentages (FMAP)

State Fiscal Year	FMAP	Enhanced (CHIP) FMAP	ACA Enhanced (CHIP) FMAP	New Eligibles FMAP
FY03	51.79%	66.25%		
	52.53%	66.77%		
FY04	54.30%	68.01%		
	55.34%	68.74%		
FY05	55.66%	68.96%		
FY06	55.05%	68.53%		
FY07	54.14%	67.90%		
FY08	52.96%	67.07%		
FY09	50.66%	65.46%		
	61.11%	72.78%		
FY10	50.12%	65.08%		
	63.93%	74.75%		
FY11	51.25%	65.87%		
	62.05%	70.44%		
FY12	55.05%	68.54%		
FY13	58.86%	71.20%		
FY14	62.26%	73.58%		100.00%
FY15	64.04%	74.83%		100.00%
FY16	64.79%	75.35%	92.60%	100.00%
FY17	64.74%	75.32%	98.32%	97.50%
FY18	65.48%	75.84%	98.84%	94.50%
FY19	65.09%	75.57%	98.57%	93.50%
FY20	64.17%	74.92%	89.29%	91.50%
FY21	64.63%	75.24%	78.11%	90.00%
FY22	65.24%	75.66%		90.00%
FY23	65.99%	76.19%		90.00%

*Note: The green cells reflect a 2.95% increase for the period April 2003 through June 2004. The blue cells reflect the ARRA stimulus adjusted FMAP for October 2008 through December 2010. The FMAP values for FY21 through FY23 are projections. The ACA Enhanced (CHIP) FMAP ends in September 2020.*