

Nevada State Health Needs Assessment



Photo credit: Michael Lindberg



Nevada Department of
Health and Human Services

2019

State & County Profiles



STATE & COUNTY PROFILES: ICON LEGEND

Behavioral Health: Mental Health & Substance Use*



Employment, Jobs, & Job Training



Access to Health Care



Individuals with Disabilities



Income, Poverty, & Housing*



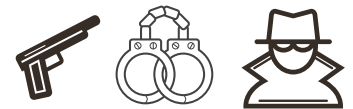
Environment & Built Environment



Chronic Disease



Crime & Violence



Education



Family Dynamics & Maternal Child Health*



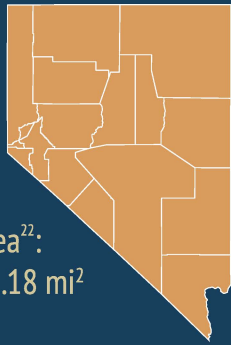
Preventive Behaviors



Communicable & Infectious Diseases



*These category icons may be separated and represented as individual icons within the report if they do not apply to that specific county. Individual icons are separated above by the following mark: ⋮



Land Area²²:
109,781.18 mi²

NEVADA STATE PROFILE

2019 Population¹: 3,053,928 people
Population Density: 27.8 people per square mile (mi²)
Capital: Carson City
Sixteen counties and one consolidated municipality (Carson City)

TOP PRIORITIES

Behavioral Health



Access to Health Care

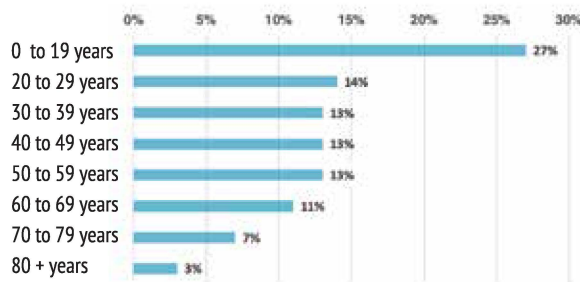


Poverty



DEMOGRAPHICS

AGE¹

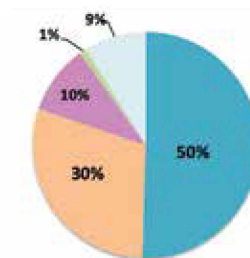


MEDIAN
AGE⁴
38.7

17 & UNDER³ 23.5%

OVER 65 +³ 15.1%

RACE/ETHNICITY¹



- White, non-Hispanic
- Hispanic
- Asian/Pacific Islander
- American Indian/Alaska Native
- African American/Black

CHILDREN AND ADOLESCENTS

HIGH SCHOOL STUDENTS²



% who seriously considered attempting suicide²

16.6%

US 17.2%

% that have lived with someone who was depressed, mentally ill, and/or suicidal²

30.3%



% who used tobacco one or more times in the last 30 days²

12%

US 19.5%



% who drank alcohol one or more times in the last 30 days²

26.5%

US 29.8%



% who played video or computer games for 3 or more hours per day²

54.9%



% who are overweight or obese²

28.9%

US 30.4%



% who texted or emailed while driving a car or other vehicle²

31.5%

US 39.2%

US 77.3%



71.6%

% of women who received prenatal care in the first trimester⁵

US 70.7%



69%

% of children, 19 to 35 months old, who are appropriately vaccinated⁶



6.8%

% of population, 18 and younger, without health insurance⁷



27,159

of children enrolled in Nevada Children's Health Insurance Program⁸

7.3%

US 7.4%

% of high school students who have ever been physically forced to have sexual intercourse²

8.7%

US 6.7%

% of high school students who did not go to school because they felt unsafe²

If there is national data available for indicators, it will be presented in the following format. All data represent most recent year available.

US %



NEVADA STATE PROFILE

ACCESS TO HEALTH CARE



% of total population with no health insurance⁷

11.2%

% of adults unable to seek a doctor's care due to costs in the last 12 months⁹

14.5%

US 12.4%

% of total population enrolled in Medicaid¹⁰

28%

LEADING CAUSE OF DEATH
per 100,000 people¹¹ | #1 | Diseases of the Heart (208.7)

HEALTH BEHAVIORS AND HEALTH OUTCOMES



% of adults who currently smoke⁹

15.7%

US 17.1%



% of adults who are overweight or obese (combined statistic)⁹

67.7%

US 66.6%



Rate of emergency room visits due to opioid overdose per 100,000 people¹²

24.2



% of adults who are binge drinkers⁹

15%

US 17.4%

Rate of emergency room visits due to alcohol poisoning/overdose per 100,000 people¹³

998.4



Suicide mortality rate per 100,000 people¹⁴

20.5

US 14.5

INCOME, EDUCATION, POVERTY, AND INDIVIDUALS WITH DISABILITIES



\$58,003
MEDIAN ANNUAL HOUSEHOLD INCOME⁷

US \$60,336



% of population that is food insecure¹⁵

12.2%

US 12.5%



Median Annual Income by Gender⁷

MALE \$45,439

FEMALE \$37,880

Difference in annual earnings between male and female workers (full-time, year round)⁷

\$7,559

US \$9,831

Unemployment Rate¹⁸

3.7%

US 3.9%

Household income was below poverty level in past 12 months⁷

TOTAL

13%

US 13.4%

18 & UNDER

18.5%

US 18.4%

OVER 65 +

8.5%

US 9.3%

SINGLE FEMALE HOUSEHOLD WITH CHILDREN OR DEPENDENTS

31%

US 35.7%

Four-year high school graduation rate¹⁶

US 85%



83.2%

Bachelor's degree or higher¹⁷



23.7%

US 30.9%



MALE 23.6%

US 30.6%

FEMALE 23.8%

US 31.2%

47.9%
Total renter households unaffordable¹⁹

US 49.5%

40.6%
Total owner households unaffordable¹⁹

US 40%



Individuals with Disabilities

% of total population that has a disability²⁰

13%

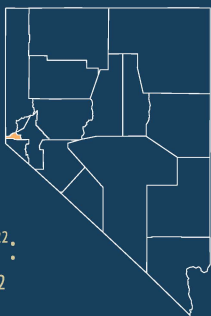
US 12.6%



Rate per 1,000 children with a disability²¹

122.6





Land Area²²:
144.66 mi²

CARSON CITY PROFILE

2019 Population¹: 54,102 people, 1.8% of Nevada's Population
Population Density: 374 people per square mile (mi²)
Consolidated Municipality | Capital of Nevada
Designation: Urban

TOP PRIORITIES

Behavioral Health



Chronic & Communicable Diseases

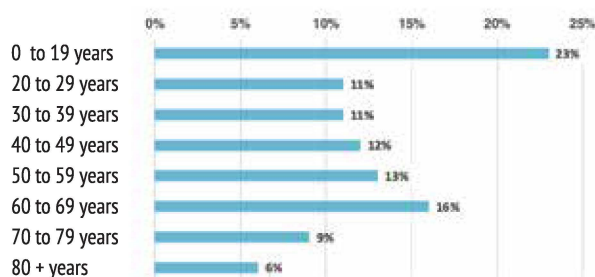


Income, Poverty, & Housing



DEMOGRAPHICS

AGE¹



MEDIAN
AGE⁴
43

NV 38.7

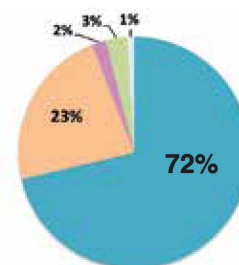
17 & UNDER³ 20.4%

NV 23.5%

OVER 65 +³ 22.5%

NV 15.1%

RACE/ETHNICITY¹



- White, non-Hispanic
- Hispanic
- Asian/Pacific Islander
- American Indian/Alaska Native
- African American/Black

CHILDREN AND ADOLESCENTS

HIGH SCHOOL STUDENTS²



% who seriously considered attempting suicide²

NV 16.6%
US 17.2%

16.6%

% that have lived with someone who was depressed, mentally ill, and/or suicidal²

NV 30.3%

26.2%



% who used tobacco one or more times in the last 30 days²

NV 12%
US 19.5%

15.4%



% who drank alcohol one or more times in the last 30 days²

NV 26.5%
US 29.8%

31.3%



% who played video or computer games for 3 or more hours per day²

NV 54.9%

46.7%



% who are overweight or obese²

NV 28.9%
US 30.4%

35.1%



% who texted or emailed while driving a car or other vehicle²

NV 31.5%
US 39.2%

32.3%

NV 71.6%
US 77.3%



% of women who received prenatal care in the first trimester⁵

59.6%

NV 69%
US 70.7%



% of children, 19 to 35 months old, who are appropriately vaccinated⁶

67%

NV 6.8%



% of population, 19 and younger, without health insurance⁷

8.8%

NV 27,159



of children enrolled in Nevada Children's Health Insurance Program⁸

704

14.2%

NV 7.3%
US 7.4%

% of high school students who have ever been physically forced to have sexual intercourse²

10.1%

NV 8.7%
US 6.7%

% of high school students who did not go to school because they felt unsafe²

If there is statewide or national data available for indicators, it will be presented in the following format. All data represent most recent year available.

NV %

US %



CARSON CITY PROFILE

ACCESS TO HEALTH CARE



% of total population with no health insurance⁷

NV 11.2%

11.6%

% of adults unable to seek a doctor's care due to costs in the last 12 months⁹

18.6%

NV 14.5%

US 12.4%

% of total population enrolled in Medicaid¹⁰

29%

NV 28%

LEADING CAUSE OF DEATH per 100,000 people¹¹

| #1 | Diseases of the Heart (268.1)

HEALTH BEHAVIORS AND HEALTH OUTCOMES



% of adults who currently smoke⁹

NV 15.7% US 17.1%

17.7%



% of adults who are overweight or obese (combined statistic)⁹

NV 67.7% US 66.6%

73.3%



Rate of emergency room visits due to opioid overdose per 100,000 people¹²

NV 24.2

30.4



% of adults who are binge drinkers⁹

NV 15% US 17.4%

11.9%

Rate of emergency room visits due to alcohol poisoning/overdose per 100,000 people¹³

NV 998.4

1,324.5



Suicide mortality rate per 100,000 people¹⁴

NV 20.5 US 14.5

30.4

INCOME, EDUCATION, POVERTY, AND INDIVIDUALS WITH DISABILITIES



\$49,341

MEDIAN ANNUAL HOUSEHOLD INCOME⁷

NV \$58,003

US \$60,336



% of population that is food insecure¹⁵

NV 12.2% US 12.5%

12.4%



VS

Median Annual Income by Gender⁷

MALE \$41,609

FEMALE \$36,685

Difference in annual earnings between male and female workers (full-time, year round)⁷

\$4,924

NV \$7,559

US \$9,831

Unemployment Rate¹⁸

4.3%

NV 3.7%

US 3.9%

Household income was below poverty level in past 12 months⁷

TOTAL

14.7%

NV 13%

US 13.4%

18 & UNDER

22.8%

NV 18.5%

US 18.4%

OVER 65 +

8.9%

NV 8.5%

US 9.3%

SINGLE FEMALE HOUSEHOLD WITH CHILDREN OR DEPENDENTS

36.0%

NV 31%

US 35.7%

Four-year high school graduation rate¹⁶

NV 83.2%

US 85%

86.0%

Bachelor's degree or higher¹⁷



21.6%

NV 23.7% US 30.9%

MALE 23.3%

NV 23.6% US 30.6%

FEMALE 19.8%

NV 23.8% US 31.2%

44.2%

Total renter households unaffordable¹⁹

NV 47.9% US 49.5%

48.8%

Total owner households unaffordable¹⁹

NV 40.6% US 40%

Individuals with Disabilities

% of total population that has a disability²⁰

23.3%

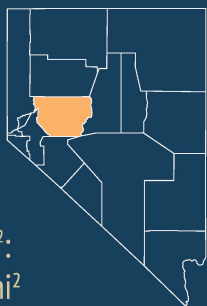
NV 13%

US 12.6%

Rate per 1,000 children with a disability²¹

142.2

NV 122.6



Land Area²²:
4,930.46 mi²

CHURCHILL COUNTY PROFILE

2019 Population¹: 26,257 people, 0.9% of Nevada's Population

Population Density: 5 people per square mile (mi²)

County Seat: Fallon

Designation: Frontier

TOP PRIORITIES

Behavioral Health



Income, Poverty, & Housing

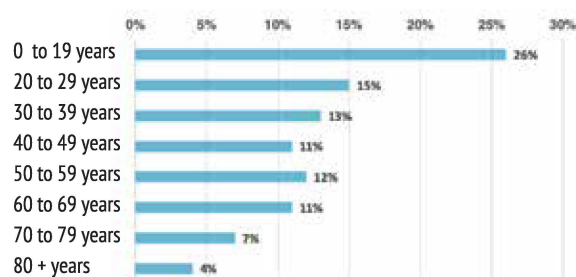


Access to Health Care



DEMOGRAPHICS

AGE¹



MEDIAN
AGE⁴
38.9

NV 38.7

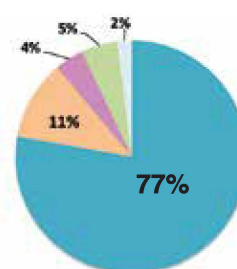
17 & UNDER³ 23.9%

NV 23.5%

OVER 65 +³ 18.3%

NV 15.1%

RACE/ETHNICITY¹



- White, non-Hispanic
- Hispanic
- Asian/Pacific Islander
- American Indian/Alaska Native
- African American/Black

CHILDREN AND ADOLESCENTS

HIGH SCHOOL STUDENTS²

*(Churchill, Humboldt, Pershing & Lander)



% who seriously considered attempting suicide²

NV 16.6%
US 17.2%

19.8%*

% that have lived with someone who was depressed, mentally ill, and/or suicidal²

NV 30.3%

32.9%*



% who used tobacco one or more times in the last 30 days²

NV 12%
US 19.5%

22.6%*



% who drank alcohol one or more times in the last 30 days²

NV 26.5%
US 29.8%

34.1%*



% who played video or computer games for 3 or more hours per day²

NV 54.9%

46.6%*



% who are overweight or obese²

NV 28.9%
US 30.4%

31.5%*



% who texted or emailed while driving a car or other vehicle²

NV 31.5%
US 39.2%

42.6%*

NV 71.6%
US 77.3%



% of women who received prenatal care in the first trimester⁵

65.6%

NV 69%
US 70.7%



% of children, 19 to 35 months old, who are appropriately vaccinated⁶

71%

NV 6.8%



% of population, 19 and younger, without health insurance⁷

10.7%

NV 27,159



of children enrolled in Nevada Children's Health Insurance Program⁸

288

10.3%*

NV 7.3%
US 7.4%

% of high school students who have ever been physically forced to have sexual intercourse²

8.2%*

NV 8.7%
US 6.7%

% of high school students who did not go to school because they felt unsafe²

If there is statewide or national data available for indicators, it will be presented in the following format. All data represent most recent year available.

*Data reported for these counties combined (Churchill, Humboldt, Pershing, and Lander)

NV %

US %



CHURCHILL COUNTY PROFILE

ACCESS TO HEALTH CARE



% of total population with no health insurance⁷

NV 11.2%

13.9%

% of adults unable to seek a doctor's care due to costs in the last 12 months⁹

15.5%

NV 14.5%

US 12.4%

% of total population enrolled in Medicaid¹⁰

27%

NV 28%

LEADING CAUSE OF DEATH per 100,000 people¹¹

| #1 | Diseases of the Heart (290.4)

HEALTH BEHAVIORS AND HEALTH OUTCOMES



% of adults who currently smoke⁹

NV 15.7% US 17.1%

20.9%



% of adults who are overweight or obese (combined statistic)⁹

NV 67.7% US 66.6%

68.4%



Rate of emergency room visits due to opioid overdose per 100,000 people¹²

NV 24.2

21.7



% of adults who are binge drinkers⁹

NV 15% US 17.4%

16%

Rate of emergency room visits due to alcohol poisoning/overdose per 100,000 people¹³

NV 998.4

1,198.0



Suicide mortality rate per 100,000 people¹⁴

NV 20.5 US 14.5

32.5

INCOME, EDUCATION, POVERTY, AND INDIVIDUALS WITH DISABILITIES



\$46,914

MEDIAN ANNUAL HOUSEHOLD INCOME⁷

NV \$58,003

US \$60,336



% of population that is food insecure¹⁵

NV 12.2% US 12.5%

12.7%



VS

Median Annual Income by Gender⁷

MALE \$46,265

FEMALE \$35,596

Difference in annual earnings between male and female workers (full-time, year round)⁷

\$10,669

NV \$7,559

US \$9,831

Four-year high school graduation rate¹⁶

NV 83.2%

US 85%

76.0%

Bachelor's degree or higher¹⁷



18.3%

NV 23.7% US 30.9%

MALE 16.3%

NV 23.6% US 30.6%

FEMALE 20.3%

NV 23.8% US 31.2%

Unemployment Rate¹⁸

4.0%

NV 3.7% US 3.9%

Household income was below poverty level in past 12 months⁷

TOTAL 13.8% NV 13% US 13.4%

18 & UNDER 15.3% NV 18.5% US 18.4%

OVER 65 + 12.1% NV 8.5% US 9.3%

SINGLE FEMALE HOUSEHOLD WITH CHILDREN OR DEPENDENTS 55.8% NV 31% US 35.7%

Individuals with Disabilities

% of total population that has a disability²⁰

14.9%

NV 13%

US 12.6%

Rate per 1,000 children with a disability²¹

146.4

NV 122.6

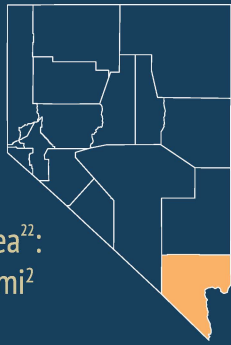
46.3%
Total renter households unaffordable¹⁹

NV 47.9% US 49.5%

42.0%
Total owner households unaffordable¹⁹

NV 40.6% US 40%





Land Area²²:
7,891.4 mi²

CLARK COUNTY PROFILE

2019 Population¹: 2,255,102 people, 73% of Nevada's Population
Population Density: 285 people per square mile (mi²)
County Seat: Las Vegas
Designation: Urban

TOP PRIORITIES

Access to Health Care



Behavioral Health

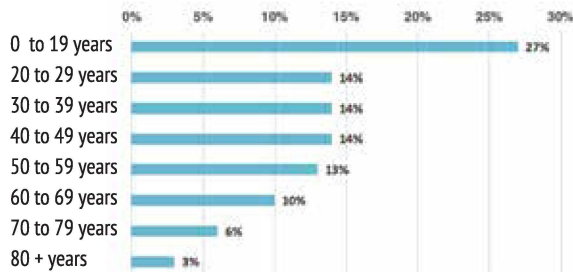


Housing & Poverty



DEMOGRAPHICS

AGE¹



MEDIAN
AGE⁴
36.9

NV 38.7

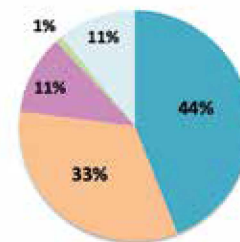
17 & UNDER³ 24%

NV 23.5%

OVER 65 +³ 14%

NV 15.1%

RACE/ETHNICITY¹



- White, non-Hispanic
- Hispanic
- Asian/Pacific Islander
- American Indian/Alaska Native
- African American/Black

CHILDREN AND ADOLESCENTS

HIGH SCHOOL STUDENTS²



% who seriously considered attempting suicide²

NV 16.6%
US 17.2%

15.9%

% that have lived with someone who was depressed, mentally ill, and/or suicidal²

NV 30.3%

29%



% who used tobacco one or more times in the last 30 days²

NV 12%
US 19.5%

10.5%



% who drank alcohol one or more times in the last 30 days²

NV 26.5%
US 29.8%

25.1%



% who played video or computer games for 3 or more hours per day²

NV 54.9%

57.9%



% who are overweight or obese²

NV 28.9%
US 30.4%

29.1%



% who texted or emailed while driving a car or other vehicle²

NV 31.5%
US 39.2%

29.6%

NV 71.6%
US 77.3%



% of women who received prenatal care in the first trimester⁵

75.3%

NV 69%
US 70.7%



% of children, 19 to 35 months old, who are appropriately vaccinated⁶

68%

NV 6.8%



% of population, 18 and younger, without health insurance⁷

6.8%

NV 27,159



of children enrolled in Nevada Children's Health Insurance Program⁸

19,930

6.8%

NV 7.3%
US 7.4%

% of high school students who have ever been physically forced to have sexual intercourse²

7.9%

NV 8.7%
US 6.7%

% of high school students who did not go to school because they felt unsafe²

If there is statewide or national data available for indicators, it will be presented in the following format. All data represent most recent year available.

NV %

US %



CLARK COUNTY PROFILE

ACCESS TO HEALTH CARE



% of total population with no health insurance⁷

NV 11.2%

11.8%

% of adults unable to seek a doctor's care due to costs in the last 12 months⁹

14.1%

NV 14.5%

US 12.4%

% of total population enrolled in Medicaid¹⁰

30%

NV 28%

LEADING CAUSE OF DEATH per 100,000 people¹¹

| #1 | Diseases of the Heart (194.2)

HEALTH BEHAVIORS AND HEALTH OUTCOMES



% of adults who currently smoke⁹

NV 15.7% US 17.1%

15%



% of adults who are overweight or obese (combined statistic)⁹

NV 67.7% US 66.6%

69.2%



Rate of emergency room visits due to opioid overdose per 100,000 people¹²

NV 24.2

24.3



% of adults who are binge drinkers⁹

NV 15% US 17.4%

13.9%

Rate of emergency room visits due to alcohol poisoning/overdose per 100,000 people¹³

NV 998.4

938.7



Suicide mortality rate per 100,000 people¹⁴

NV 20.5 US 14.5

19.0

INCOME, EDUCATION, POVERTY, AND INDIVIDUALS WITH DISABILITIES



\$57,189

MEDIAN ANNUAL HOUSEHOLD INCOME⁷

NV \$58,003

US \$60,336



% of population that is food insecure¹⁵

NV 12.2% US 12.5%

12.6%



VS

Median Annual Income by Gender⁷

MALE \$43,420

FEMALE \$37,407

Difference in annual earnings between male and female workers (full-time, year round)⁷

\$6,013

NV \$7,559

US \$9,831

Unemployment Rate¹⁸

4.7%

NV 3.7%

US 3.9%

Household income was below poverty level in past 12 months⁷

TOTAL

13.8%

NV 13%

US 13.4%

18 & UNDER

20.3%

NV 18.5%

US 18.4%

OVER 65 +

8.5%

NV 8.5%

US 9.3%

SINGLE FEMALE HOUSEHOLD WITH CHILDREN OR DEPENDENTS

33.4%

NV 31%

US 35.7%

Four-year high school graduation rate¹⁶

NV 83.2%

US 85%

85.2%

Bachelor's degree or higher¹⁷



23.3%

NV 23.7% US 30.9%

MALE 23.2%

NV 23.6% US 30.6%

FEMALE 23.4%

NV 23.8% US 31.2%

Total renter households unaffordable¹⁹

49.2%

NV 47.9% US 49.5%

Total owner households unaffordable¹⁹

42%

NV 40.6% US 40%

Individuals with Disabilities

% of total population that has a disability²⁰

12.4%

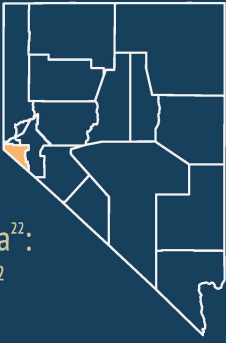
NV 13%

US 12.6%

Rate per 1,000 children with a disability²¹

122.4

NV 122.6



Land Area²²:
709.7 mi²

DOUGLAS COUNTY PROFILE

2019 Population¹: 49,463 people, 1.6% of Nevada's Population
Population Density: 70 people per square mile (mi²)
County Seat: Minden
Designation: Rural

TOP PRIORITIES

Behavioral Health



Access to Health Care

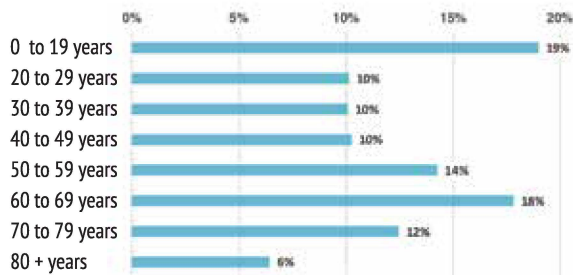


Chronic Diseases



DEMOGRAPHICS

AGE¹



MEDIAN
AGE⁴
50.8

NV 38.7

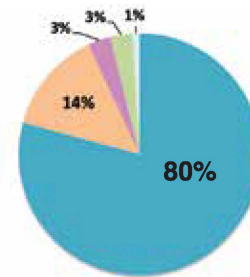
17 & UNDER³ 17.3%

NV 23.5%

OVER 65 +³ 27.8%

NV 15.1%

RACE/ETHNICITY¹



- White, non-Hispanic
- Hispanic
- Asian/Pacific Islander
- American Indian/Alaska Native
- African American/Black

CHILDREN AND ADOLESCENTS

HIGH SCHOOL STUDENTS²



% who seriously considered attempting suicide²

NV 16.6%
US 17.2%

18.2%

% that have lived with someone who was depressed, mentally ill, and/or suicidal²

NV 30.3%

40.5%



% who used tobacco one or more times in the last 30 days²

NV 12%
US 19.5%

22.9%



% who drank alcohol one or more times in the last 30 days²

NV 26.5%
US 29.8%

47.1%



% who played video or computer games for 3 or more hours per day²

NV 54.9%

47.3%



% who are overweight or obese²

NV 28.9%
US 30.4%

18.2%



% who texted or emailed while driving a car or other vehicle²

NV 31.5%
US 39.2%

47.8%

NV 71.6%
US 77.3%



% of women who received prenatal care in the first trimester⁵

64.2%

NV 69%
US 70.7%



% of children, 19 to 35 months old, who are appropriately vaccinated⁶

62%

NV 6.8%



% of population, 19 and younger, without health insurance⁷

11.9%

NV 27,159



of children enrolled in Nevada Children's Health Insurance Program⁸

322

7.5%

NV 7.3%
US 7.4%

% of high school students who have ever been physically forced to have sexual intercourse²

9.8%

NV 8.7%
US 6.7%

% of high school students who did not go to school because they felt unsafe²

If there is statewide or national data available for indicators, it will be presented in the following format. All data represent most recent year available.

NV %

US %



DOUGLAS COUNTY PROFILE

ACCESS TO HEALTH CARE



% of total population with no health insurance⁷

NV 11.2%

10.8%

% of adults unable to seek a doctor's care due to costs in the last 12 months⁹

9.9%

NV 14.5%

US 12.4%

% of total population enrolled in Medicaid¹⁰

16%

NV 28%

LEADING CAUSE OF DEATH
per 100,000 people¹¹ | #1 | Diseases of the Heart (225.6)

HEALTH BEHAVIORS AND HEALTH OUTCOMES



% of adults who currently smoke⁹

NV 15.7% US 17.1%

12.7%



% of adults who are overweight or obese (combined statistic)⁹

NV 67.7% US 66.6%

60%



Rate of emergency room visits due to opioid overdose per 100,000 people¹²

NV 24.2

15.0



% of adults who are binge drinkers⁹

NV 15% US 17.4%

12%

Rate of emergency room visits due to alcohol poisoning/overdose per 100,000 people¹³

NV 998.4

818.4



Suicide mortality rate per 100,000 people¹⁴

NV 20.5 US 14.5

24.3

INCOME, EDUCATION, POVERTY, AND INDIVIDUALS WITH DISABILITIES



\$61,176
MEDIAN ANNUAL HOUSEHOLD INCOME⁷

NV \$58,003

US \$60,336



% of population that is food insecure¹⁵

NV 12.2% US 12.5%

11%



Median Annual Income by Gender⁷

MALE \$52,080

FEMALE \$38,931

Difference in annual earnings between male and female workers (full-time, year round)⁷

\$13,149

NV \$7,559

US \$9,831

Four-year high school graduation rate¹⁶

NV 83.2%

US 85%

88.6%

Bachelor's degree or higher¹⁷



27.2%

NV 23.7% US 30.9%

MALE 28.5%

NV 23.6% US 30.6%

FEMALE 25.9%

NV 23.8% US 31.2%

Unemployment Rate¹⁸

3.9%

NV 3.7% US 3.9%

Household income was below poverty level in past 12 months⁷

TOTAL

9.8%

NV 13%

US 13.4%

18 & UNDER

13.5%

NV 18.5%

US 18.4%

OVER 65 +

5.3%

NV 8.5%

US 9.3%

SINGLE FEMALE HOUSEHOLD WITH CHILDREN OR DEPENDENTS

22.4%

NV 31%

US 35.7%

Individuals with Disabilities

% of total population that has a disability²⁰

15.4%

NV 13%

US 12.6%

Rate per 1,000 children with a disability²¹

136.4

NV 122.6

Total renter households unaffordable¹⁹

45.8%

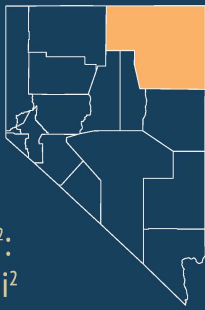
NV 47.9% US 49.5%

Total owner households unaffordable¹⁹

53.2%

NV 40.6% US 40%





ELKO COUNTY PROFILE

Land Area²²:
17,169.8 mi²

2019 Population¹: 53,852 people, 1.7% of Nevada's Population
Population Density: 3 people per square mile (mi²)
County Seat: Elko
Designation: Frontier

TOP PRIORITIES

Access to Health Care



Behavioral Health

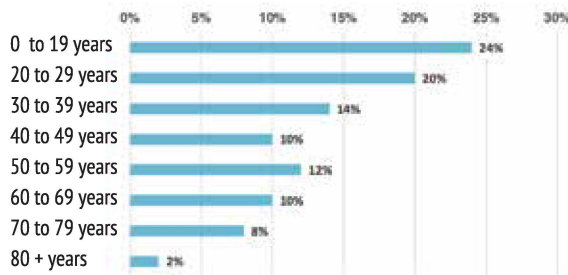


Health Behaviors & Preventive Care



DEMOGRAPHICS

AGE¹



MEDIAN AGE⁴
34.1

NV 38.7

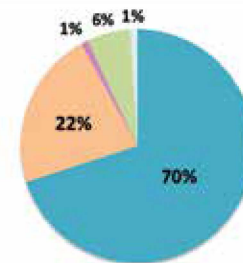
17 & UNDER³ 24.3%

NV 23.5%

OVER 65 +³ 13.4%

NV 15.1%

RACE/ETHNICITY¹



- White, non-Hispanic
- Hispanic
- Asian/Pacific Islander
- American Indian/Alaska Native
- African American/Black

CHILDREN AND ADOLESCENTS

HIGH SCHOOL STUDENTS²

*(Elko, White Pine, & Eureka)



% who seriously considered attempting suicide²

NV 16.6%
US 17.2%

22.2%*

% that have lived with someone who was depressed, mentally ill, and/or suicidal²

NV 30.3%

35.3%*



% who used tobacco one or more times in the last 30 days²

NV 12%
US 19.5%

19.6%*



% who drank alcohol one or more times in the last 30 days²

NV 26.5%
US 29.8%

36.6%*



% who played video or computer games for 3 or more hours per day²

NV 54.9%

38.5%*



% who are overweight or obese²

NV 28.9%
US 30.4%

28.5%*



% who texted or emailed while driving a car or other vehicle²

NV 31.5%
US 39.2%

40.6%*

NV 71.6%

US 77.3%



% of women who received prenatal care in the first trimester⁵

58.5%

NV 69%

US 70.7%



% of children, 19 to 35 months old, who are appropriately vaccinated⁶

75%

NV 6.8%



7.5%

% of population, 19 and younger, without health insurance⁷

NV 27,159



339

of children enrolled in Nevada Children's Health Insurance Program⁸

14.7%*

NV 7.3%
US 7.4%

% of high school students who have ever been physically forced to have sexual intercourse²

8.1%*

NV 8.7%
US 6.7%

% of high school students who did not go to school because they felt unsafe²

If there is statewide or national data available for indicators, it will be presented in the following format. All data represent most recent year available.

*Data reported for these counties combined (Elko, White Pine, and Eureka)

NV %

US %



ELKO COUNTY PROFILE

ACCESS TO HEALTH CARE



% of total population with no health insurance⁷

NV 11.2%

10.5%

% of adults unable to seek a doctor's care due to costs in the last 12 months⁹

16.6%

NV 14.5%

US 12.4%

% of total population enrolled in Medicaid¹⁰

20%

NV 28%

LEADING CAUSE OF DEATH per 100,000 people¹¹

| #1 | Diseases of the Heart (105.8)

HEALTH BEHAVIORS AND HEALTH OUTCOMES



% of adults who currently smoke⁹

NV 15.7% US 17.1%

22.9%



% of adults who are overweight or obese (combined statistic)⁹

NV 67.7% US 66.6%

67.6%



Rate of emergency room visits due to opioid overdose per 100,000 people¹²

NV 24.2

16.3



% of adults who are binge drinkers⁹

NV 15% US 17.4%

20.6%

Rate of emergency room visits due to alcohol poisoning/overdose per 100,000 people¹³

NV 998.4

1,288.7



Suicide mortality rate per 100,000 people¹⁴

NV 20.5 US 14.5

26.1

INCOME, EDUCATION, POVERTY, AND INDIVIDUALS WITH DISABILITIES



\$76,178

MEDIAN ANNUAL HOUSEHOLD INCOME⁷

NV \$58,003

US \$60,336



% of population that is food insecure¹⁵

NV 12.2% US 12.5%

8.7%



VS

Median Annual Income by Gender⁷

MALE \$68,019

FEMALE \$37,872

Difference in annual earnings between male and female workers (full-time, year round)⁷

\$30,147

NV \$7,559

US \$9,831

Unemployment Rate¹⁸

3.2%

NV 3.7%

US 3.9%

Household income was below poverty level in past 12 months⁷

TOTAL

11.5%

NV 13%

US 13.4%

18 & UNDER

16.2%

NV 18.5%

US 18.4%

OVER 65 +

10.0%

NV 8.5%

US 9.3%

SINGLE FEMALE HOUSEHOLD WITH CHILDREN OR DEPENDENTS

36.9%

NV 31%

US 35.7%

Four-year high school graduation rate¹⁶

NV 83.2%

US 85%

91.8%

Bachelor's degree or higher¹⁷



17.7%

NV 23.7% US 30.9%

MALE 17.2%

NV 23.6% US 30.6%

FEMALE 18.1%

NV 23.8% US 31.2%

Total renter households unaffordable¹⁹

32.0%

NV 47.9% US 49.5%

Total owner households unaffordable¹⁹

23.0%

NV 40.6% US 40%

Individuals with Disabilities

% of total population that has a disability²⁰

11.9%

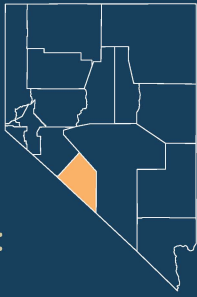
NV 13%

US 12.6%

Rate per 1,000 children with a disability²¹

116.8

NV 122.6



Land Area²²:
3,581.8 mi²

ESMERALDA COUNTY PROFILE

2019 Population¹: 964 people, 0.03% of Nevada's Population
Population Density: 0.3 people per square mile (mi²)
County Seat: Goldfield
Designation: Frontier

TOP PRIORITIES

Access to Health Care



Maternal Child Health

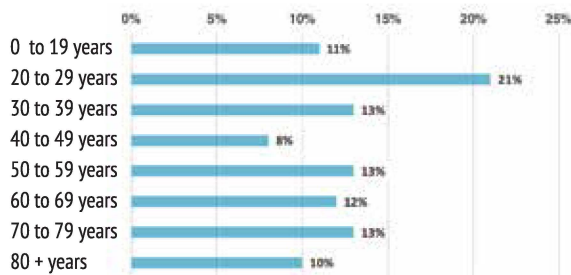


Income & Poverty



DEMOGRAPHICS

AGE¹



MEDIAN
AGE⁴
48.0

NV 38.7

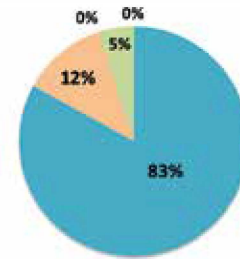
17 & UNDER³ 10.1%

NV 23.5%

OVER 65 +³ 26.6%

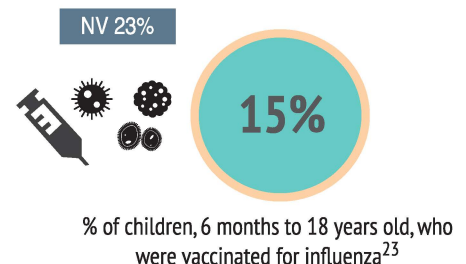
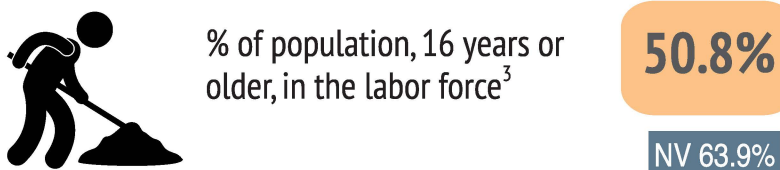
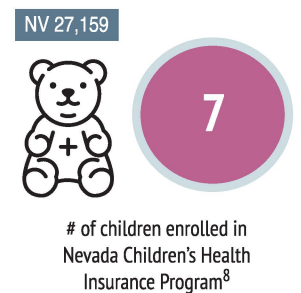
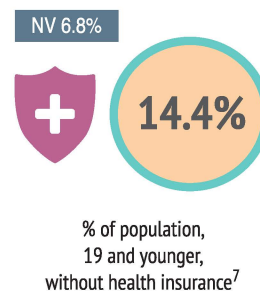
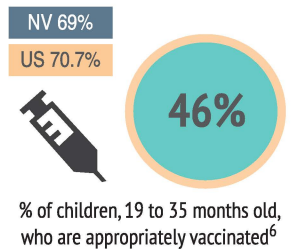
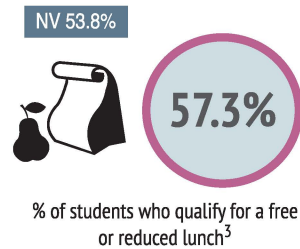
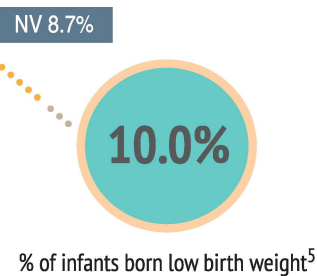
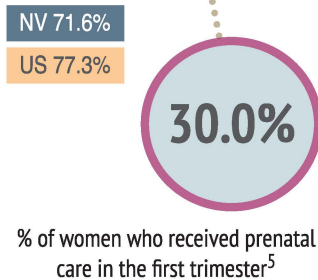
NV 15.1%

RACE/ETHNICITY¹



- White, non-Hispanic
- Hispanic
- Asian/Pacific Islander
- American Indian/Alaska Native
- African American/Black

CHILDREN AND MATERNAL CHILD HEALTH



If there is statewide or national data available for indicators, it will be presented in the following format. All data represent most recent year available.

*No high school data available due to no high school school being located within Esmeralda County School District.

NV %

US %



% of total population with
no health insurance⁷

NV 11.2%

20.2%

LEADING CAUSE
OF DEATH
per 100,000 people¹¹

| #1 | Diseases of the Heart (285.1)

% of adults unable to seek a doctor's care
due to costs in the last 12 months⁹

Data
Not Available

US 12.4%

% of total population
enrolled in Medicaid¹⁰

18%

HEALTH BEHAVIORS AND HEALTH OUTCOMES



% of adults who currently smoke⁹

NV 15.7% US 17.1%

Data
Not Available



% of adults who are overweight or
obese (combined statistic)⁹

NV 67.7% US 66.6%

Data
Not Available



Rate of emergency room visits
due to opioid overdose per
100,000 people¹²

n/a



% of adults who are binge drinkers⁹

NV 15% US 17.4%

Data
Not Available

Rate of emergency room visits due to
alcohol poisoning/overdose per
100,000 people¹³

NV 998.4

414.7



Suicide mortality rate per
100,000 people¹⁴

NV 20.5 US 14.5

INCOME, EDUCATION, POVERTY, AND INDIVIDUALS WITH DISABILITIES



\$39,405
MEDIAN ANNUAL HOUSEHOLD INCOME⁷

US \$60,336



Median Annual Income by Gender⁷

MALE \$38,500

FEMALE \$27,250

US \$9,831

Four-year high school
graduation rate¹⁶

NV 83.2%

US 85%

n/a

Bachelor's degree or higher¹⁷



16.7%

US 30.9%

MALE 21.0%

US 30.6%

US 31.2%



% of population that is food insecure¹⁵

NV 12.2% US 12.5%

11.1%

Unemployment Rate¹⁸

5.0%

US 3.9%

Household income was below poverty level in past 12 months⁷

TOTAL

6.8%

US 13.4%

18 & UNDER

8.9%

US 18.4%

US 9.3%

50.0%

US 35.7%

Individuals with Disabilities

% of total population that
has a disability²⁰

US 12.6%

Rate per 1,000 children
with a disability²¹

Data
Not Available

31.3%
Total renter households unaffordable¹⁹

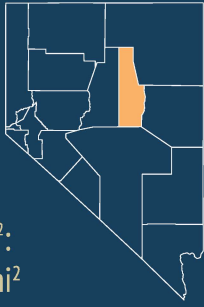
US 49.5%

17.2%

Total owner households unaffordable¹⁹

US 40%





Land Area²²:
4,175.68 mi²

EUREKA COUNTY PROFILE

2019 Population¹: 1,759 people, 0.06% of Nevada's Population
Population Density: 0.4 people per square mile (mi²)
County Seat: Eureka
Designation: Frontier

TOP PRIORITIES

Access to Health Care

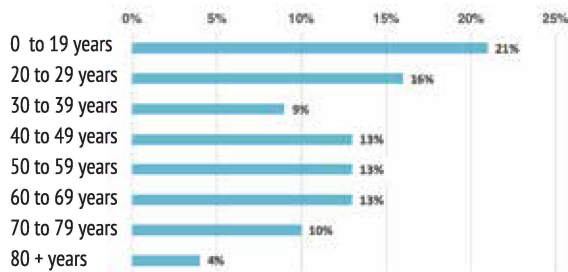


Behavioral Health



DEMOGRAPHICS

AGE¹



MEDIAN
AGE⁴
47.3

NV 38.7

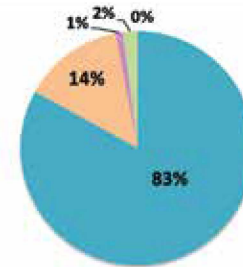
17 & UNDER³ 19.5%

NV 23.5%

OVER 65 +³ 18.3%

NV 15.1%

RACE/ETHNICITY¹



- White, non-Hispanic
- Hispanic
- Asian/Pacific Islander
- American Indian/Alaska Native
- African American/Black

CHILDREN AND ADOLESCENTS

HIGH SCHOOL STUDENTS²

*(Elko, White Pine, & Eureka)



% who seriously considered attempting suicide²

NV 16.6%
US 17.2%

22.2%*

% that have lived with someone who was depressed, mentally ill, and/or suicidal²

NV 30.3%

35.3%*



% who used tobacco one or more times in the last 30 days²

NV 12%
US 19.5%

19.6%*



% who drank alcohol one or more times in the last 30 days²

NV 26.5%
US 29.8%

36.6%*



% who played video or computer games for 3 or more hours per day²

NV 54.9%

38.5%*



% who are overweight or obese²

NV 28.9%
US 30.4%

28.5%*



% who texted or emailed while driving a car or other vehicle²

NV 31.5%
US 39.2%

40.6%*

NV 71.6%
US 77.3%



% of women who received prenatal care in the first trimester⁵

60.0%

NV 69%
US 70.7%



% of children, 19 to 35 months old, who are appropriately vaccinated⁶

83%

NV 6.8%



% of population, 19 and younger, without health insurance⁷

7.0%

NV 27,159



of children enrolled in Nevada Children's Health Insurance Program⁸

4

14.7%*

NV 7.3%
US 7.4%

% of high school students who have ever been physically forced to have sexual intercourse²

8.1%*

NV 8.7%
US 6.7%

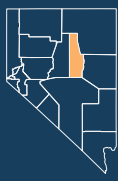
% of high school students who did not go to school because they felt unsafe²

If there is statewide or national data available for indicators, it will be presented in the following format. All data represent most recent year available.

*Data reported for these counties combined (Elko, White Pine, and Eureka)

NV %

US %



EUREKA COUNTY PROFILE

ACCESS TO HEALTH CARE



% of total population with no health insurance⁷

NV 11.2%

13.6%

% of adults unable to seek a doctor's care due to costs in the last 12 months⁹

Data Not Available

NV 14.5%

US 12.4%

% of total population enrolled in Medicaid¹⁰

15%

NV 28%

LEADING CAUSE OF DEATH
per 100,000 people¹¹ | #1 | Diseases of the Heart (171.1)

HEALTH BEHAVIORS AND HEALTH OUTCOMES



% of adults who currently smoke⁹

NV 15.7% US 17.1%

Data Not Available



% of adults who are overweight or obese (combined statistic)⁹

NV 67.7% US 66.6%

Data Not Available



Rate of emergency room visits due to opioid overdose per 100,000 people¹²

NV 24.2

13.2



% of adults who are binge drinkers⁹

NV 15% US 17.4%

Data Not Available

Rate of emergency room visits due to alcohol poisoning/overdose per 100,000 people¹³

NV 998.4

539.5



Suicide mortality rate per 100,000 people¹⁴

NV 20.5 US 14.5

Data Not Available

INCOME, EDUCATION, POVERTY, AND INDIVIDUALS WITH DISABILITIES



\$67,159
MEDIAN ANNUAL HOUSEHOLD INCOME⁷

NV \$58,003

US \$60,336



% of population that is food insecure¹⁵

NV 12.2% US 12.5%

11.5%



Median Annual Income by Gender⁷

MALE \$71,447

FEMALE \$51,250

Difference in annual earnings between male and female workers (full-time, year round)⁷

\$20,197

NV \$7,559

US \$9,831

Unemployment Rate¹⁸

2.8%

NV 3.7% US 3.9%

Household income was below poverty level in past 12 months⁷

TOTAL 10.0%

NV 13% US 13.4%

18 & UNDER

N/A

NV 18.5% US 18.4%

OVER 65 +

51%

NV 8.5% US 9.3%

SINGLE FEMALE HOUSEHOLD WITH CHILDREN OR DEPENDENTS

N/A

NV 31% US 35.7%

Four-year high school graduation rate¹⁶

NV 83.2%

US 85%

100%

Bachelor's degree or higher¹⁷



13.5%

NV 23.7% US 30.9%

MALE 17.5%

NV 23.6% US 30.6%

FEMALE 9.0%

NV 23.8% US 31.2%

26.1%
Total renter households unaffordable¹⁹

NV 47.9% US 49.5%

18.5%
Total owner households unaffordable¹⁹

NV 40.6% US 40%

Individuals with Disabilities

% of total population that has a disability²⁰

17.6%

NV 13%

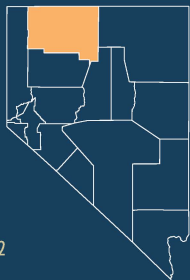
US 12.6%

Rate per 1,000 children with a disability²¹

61.6

NV 122.6

Land Area²²:
9,640.76 mi²



HUMBOLDT COUNTY PROFILE

2019 Population¹: 16,792 people, 0.5% of Nevada's Population
Population Density: 1.7 people per square mile (mi²)
County Seat: Winnemucca
Designation: Frontier

TOP PRIORITIES

Behavioral Health



Access to Health Care

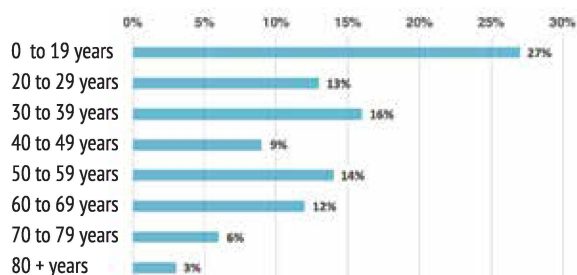


Health Behaviors & Preventive Care



DEMOGRAPHICS

AGE¹



MEDIAN AGE⁴
35.6

NV 38.7

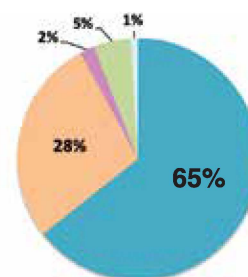
17 & UNDER³ 26.8%

NV 23.5%

OVER 65 +³ 14.4%

NV 15.1%

RACE/ETHNICITY¹



- White, non-Hispanic
- Hispanic
- Asian/Pacific Islander
- American Indian/Alaska Native
- African American/Black

CHILDREN AND ADOLESCENTS

HIGH SCHOOL STUDENTS²

*(Churchill, Humboldt, Pershing & Lander)



% who seriously considered attempting suicide²

NV 16.6%
US 17.2%

19.8%*

% that have lived with someone who was depressed, mentally ill, and/or suicidal²

NV 30.3%

32.9%*



% who used tobacco one or more times in the last 30 days²

NV 12%
US 19.5%

22.6%*



% who drank alcohol one or more times in the last 30 days²

NV 26.5%
US 29.8%

34.1%*



% who played video or computer games for 3 or more hours per day²

NV 54.9%

46.6%*



% who are overweight or obese²

NV 28.9%
US 30.4%

31.5%*



% who texted or emailed while driving a car or other vehicle²

NV 31.5%
US 39.2%

42.6%*

NV 71.6%

US 77.3%



% of women who received prenatal care in the first trimester⁵

58.4%

NV 69%

US 70.7%



% of children, 19 to 35 months old, who are appropriately vaccinated⁶

66%

NV 6.8%



15.3%

% of population, 19 and younger, without health insurance⁷

NV 27,159



119

of children enrolled in Nevada Children's Health Insurance Program⁸

10.3%*

NV 7.3%
US 7.4%

% of high school students who have ever been physically forced to have sexual intercourse²

8.2%*

NV 8.7%
US 6.7%

% of high school students who did not go to school because they felt unsafe²

If there is statewide or national data available for indicators, it will be presented in the following format. All data represent most recent year available.

*Data reported for these counties combined (Churchill, Humboldt, Pershing, and Lander)

NV %

US %



HUMBOLDT COUNTY PROFILE

ACCESS TO HEALTH CARE



% of total population with no health insurance⁷

NV 11.2%

16%

% of adults unable to seek a doctor's care due to costs in the last 12 months⁹

15.9%

NV 14.5%

US 12.4%

% of total population enrolled in Medicaid¹⁰

25%

NV 28%

LEADING CAUSE OF DEATH per 100,000 people¹¹

| #1 | Diseases of the Heart (166.7)

HEALTH BEHAVIORS AND HEALTH OUTCOMES



% of adults who currently smoke⁹

NV 15.7%

US 17.1%

23.9%



% of adults who are overweight or obese (combined statistic)⁹

NV 67.7%

US 66.6%

73%



Rate of emergency room visits due to opioid overdose per 100,000 people¹²

NV 24.2

29.5



% of adults who are binge drinkers⁹

NV 15%

US 17.4%

24%

Rate of emergency room visits due to alcohol poisoning/overdose per 100,000 people¹³

NV 998.4

1,010.8



Suicide mortality rate per 100,000 people¹⁴

NV 20.5

US 14.5

35.4

INCOME, EDUCATION, POVERTY, AND INDIVIDUALS WITH DISABILITIES



\$69,324

MEDIAN ANNUAL HOUSEHOLD INCOME⁷

NV \$58,003

US \$60,336



% of population that is food insecure¹⁵

NV 12.2%

US 12.5%

7.6%



VS

Median Annual Income by Gender⁷

MALE \$63,119

FEMALE \$38,073

Difference in annual earnings between male and female workers (full-time, year round)⁷

\$25,046

NV \$7,559

US \$9,831

Unemployment Rate¹⁸

3.5%

NV 3.7%

US 3.9%

Household income was below poverty level in past 12 months⁷

TOTAL

9.1%

NV 13%

US 13.4%

18 & UNDER

9.7%

NV 18.5%

US 18.4%

OVER 65 +

8.0%

NV 8.5%

US 9.3%

SINGLE FEMALE HOUSEHOLD WITH CHILDREN OR DEPENDENTS

31.7%

NV 31%

US 35.7%

Four-year high school graduation rate¹⁶

NV 83.2%

US 85%

90.6%

Bachelor's degree or higher¹⁷



15.2%

NV 23.7%

US 30.9%

MALE 12.7%

NV 23.6%

US 30.6%

FEMALE 18.1%

NV 23.8%

US 31.2%

Total renter households unaffordable¹⁹

39.7%

NV 47.9%

US 49.5%

Total owner households unaffordable¹⁹

26.5%

NV 40.6%

US 40%

Individuals with Disabilities

% of total population that has a disability²⁰

12.5%

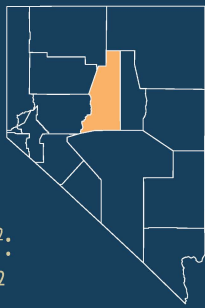
NV 13%

US 12.6%

Rate per 1,000 children with a disability²¹

154.2

NV 122.6



Land Area²²:
5,490.1 mi²

LANDER COUNTY PROFILE

2019 Population¹: 6,073 people, 0.2% of Nevada's Population
Population Density: 1.1 people per square mile (mi²)
County Seat: Battle Mountain
Designation: Frontier

TOP PRIORITIES

Behavioral Health



Health Behaviors & Preventive Care Maternal Child Health

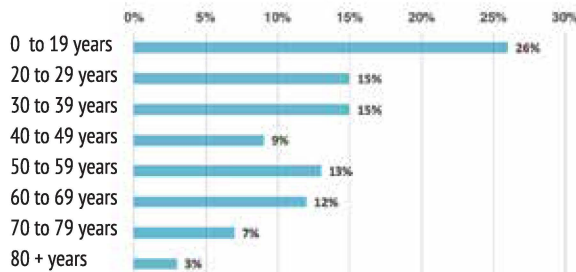


Access to Health Care



DEMOGRAPHICS

AGE¹



MEDIAN
AGE⁴
37.8

NV 38.7

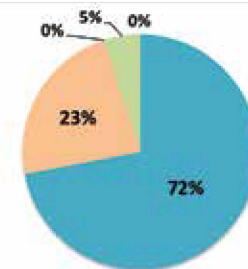
17 & UNDER³ 24.2%

NV 23.5%

OVER 65 +³ 15.4%

NV 15.1%

RACE/ETHNICITY¹



- White, non-Hispanic
- Hispanic
- Asian/Pacific Islander
- American Indian/Alaska Native
- African American/Black

CHILDREN AND ADOLESCENTS

HIGH SCHOOL STUDENTS²

*(Churchill, Humboldt, Pershing & Lander)



% who seriously considered attempting suicide²

NV 16.6%
US 17.2%

19.8%*

% that have lived with someone who was depressed, mentally ill, and/or suicidal²

NV 30.3%

32.9%*



% who used tobacco one or more times in the last 30 days²

NV 12%
US 19.5%

22.6%*



% who drank alcohol one or more times in the last 30 days²

NV 26.5%
US 29.8%

34.1%*



% who played video or computer games for 3 or more hours per day²

NV 54.9%

46.6%*



% who are overweight or obese²

NV 28.9%
US 30.4%

31.5%*



% who texted or emailed while driving a car or other vehicle²

NV 31.5%
US 39.2%

42.6%*

NV 71.6%

US 77.3%



% of women who received prenatal care in the first trimester⁵

55.9%

NV 69%

US 70.7%



% of children, 19 to 35 months old, who are appropriately vaccinated⁶

66%

NV 6.8%



% of population, 19 and younger, without health insurance⁷

6.7%

NV 27,159



of children enrolled in Nevada Children's Health Insurance Program⁸

32

10.3%*

NV 7.3%

US 7.4%

% of high school students who have ever been physically forced to have sexual intercourse²

8.2%*

NV 8.7%

US 6.7%

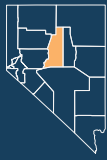
% of high school students who did not go to school because they felt unsafe²

If there is statewide or national data available for indicators, it will be presented in the following format. All data represent most recent year available.

*Data reported for these counties combined (Churchill, Humboldt, Pershing, and Lander)

NV %

US %



LANDER COUNTY PROFILE

ACCESS TO HEALTH CARE



% of total population with no health insurance⁷

NV 11.2%

9.5%

% of adults unable to seek a doctor's care due to costs in the last 12 months⁹

8.4%

NV 14.5%

US 12.4%

% of total population enrolled in Medicaid¹⁰

21%

NV 28%

LEADING CAUSE OF DEATH per 100,000 people¹¹

#1 | Malignant Neoplasms (cancer) (165.2)

HEALTH BEHAVIORS AND HEALTH OUTCOMES



% of adults who currently smoke⁹

NV 15.7%

US 17.1%

17.5%



% of adults who are overweight or obese (combined statistic)⁹

NV 67.7%

US 66.6%

70.1%



Rate of emergency room visits due to opioid overdose per 100,000 people¹²

NV 24.2

20.1



% of adults who are binge drinkers⁹

NV 15%

US 17.4%

24.0%

Rate of emergency room visits due to alcohol poisoning/overdose per 100,000 people¹³

NV 998.4

1,337.7



Suicide mortality rate per 100,000 people¹⁴

NV 20.5

US 14.5

24.2

INCOME, EDUCATION, POVERTY, AND INDIVIDUALS WITH DISABILITIES



\$79,865

MEDIAN ANNUAL HOUSEHOLD INCOME⁷

NV \$58,003

US \$60,336



% of population that is food insecure¹⁵

NV 12.2%

US 12.5%

7.9%



VS

Median Annual Income by Gender⁷

MALE \$63,292

FEMALE \$45,000

Difference in annual earnings between male and female workers (full-time, year round)⁷

\$18,292

NV \$7,559

US \$9,831

Four-year high school graduation rate¹⁶

NV 83.2%

US 85%

86.8%

Bachelor's degree or higher¹⁷



13.3%

NV 23.7% US 30.9%

MALE 12.8%

NV 23.6% US 30.6%

FEMALE 13.7%

NV 23.8% US 31.2%

Unemployment Rate¹⁸

3.3%

NV 3.7%

US 3.9%

Household income was below poverty level in past 12 months⁷

TOTAL

13.2%

NV 13%

US 13.4%

18 & UNDER

22.3%

NV 18.5%

US 18.4%

OVER 65 +

11.1%

NV 8.5%

US 9.3%

SINGLE FEMALE HOUSEHOLD WITH CHILDREN OR DEPENDENTS

68.9%

NV 31%

US 35.7%

Individuals with Disabilities

% of total population that has a disability²⁰

12.3%

NV 13%

US 12.6%

Rate per 1,000 children with a disability²¹

97.6

NV 122.6

Total renter households unaffordable¹⁹

32.5%

NV 47.9%

US 49.5%

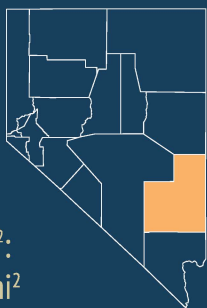
Total owner households unaffordable¹⁹

9.8%

NV 40.6%

US 40%





LINCOLN COUNTY PROFILE

Land Area²²:
10,633.2 mi²

2019 Population¹: 4,679 people, 0.15% of Nevada's Population
Population Density: 0.4 people per square mile (mi²)
County Seat: Pioche
Designation: Frontier

TOP PRIORITIES

Employment & Job Training



Access to Health Care

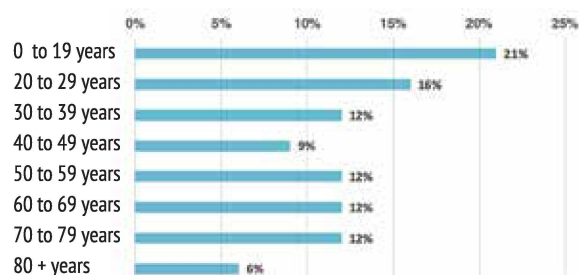


Health Behaviors & Preventive Care



DEMOGRAPHICS

AGE¹



MEDIAN
AGE⁴
41.6

NV 38.7

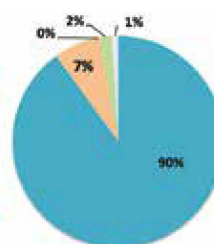
17 & UNDER³ 17.6%

NV 23.5%

OVER 65 +³ 23.2%

NV 15.1%

RACE/ETHNICITY¹



- White, non-Hispanic
- Hispanic
- Asian/Pacific Islander
- American Indian/Alaska Native
- African American/Black

CHILDREN AND ADOLESCENTS

HIGH SCHOOL STUDENTS²

*(Nye and Lincoln)



% who seriously considered attempting suicide²

NV 16.6%
US 17.2%

14.4%*

% that have lived with someone who was depressed, mentally ill, and/or suicidal²

NV 30.3%

31.4%*



% who used tobacco one or more times in the last 30 days²

NV 12%
US 19.5%

12.2%*



% who drank alcohol one or more times in the last 30 days²

NV 26.5%
US 29.8%

23.8%*



% who played video or computer games for 3 or more hours per day²

NV 54.9%

47.5%*



% who are overweight or obese²

NV 28.9%
US 30.4%

28.5%*



% who texted or emailed while driving a car or other vehicle²

NV 31.5%
US 39.2%

42.8%*

NV 71.6%

US 77.3%



77.5%

% of women who received prenatal care in the first trimester⁵

NV 69%

US 70.7%



53%

% of children, 19 to 35 months old, who are appropriately vaccinated⁶

NV 6.8%



18.3%

% of population, 19 and younger, without health insurance⁷

NV 27,159



48

of children enrolled in Nevada Children's Health Insurance Program⁸

7.0%*

NV 7.3%
US 7.4%

% of high school students who have ever been physically forced to have sexual intercourse²

5.8%*

NV 8.7%
US 6.7%

% of high school students who did not go to school because they felt unsafe²

If there is statewide or national data available for indicators, it will be presented in the following format. All data represent most recent year available.

*Data reported for these counties combined (Nye and Lincoln)

NV %

US %



LINCOLN COUNTY PROFILE

ACCESS TO HEALTH CARE



% of total population with no health insurance⁷

NV 11.2%

10.4%

% of adults unable to seek a doctor's care due to costs in the last 12 months⁹

3.6%

NV 14.5%

US 12.4%

% of total population enrolled in Medicaid¹⁰

21%

NV 28%

LEADING CAUSE OF DEATH
per 100,000 people¹¹ | #1 | Diseases of the Heart (196.3)

HEALTH BEHAVIORS AND HEALTH OUTCOMES



% of adults who currently smoke⁹

NV 15.7% US 17.1%

12.8%



% of adults who are overweight or obese (combined statistic)⁹

NV 67.7% US 66.6%

67.3%



Rate of emergency room visits due to opioid overdose per 100,000 people¹²

NV 24.2

49.1



% of adults who are binge drinkers⁹

NV 15% US 17.4%

8.4%

Rate of emergency room visits due to alcohol poisoning/overdose per 100,000 people¹³

NV 998.4

888.0



Suicide mortality rate per 100,000 people¹⁴

NV 20.5 US 14.5

39.3

INCOME, EDUCATION, POVERTY, AND INDIVIDUALS WITH DISABILITIES



\$52,971
MEDIAN ANNUAL HOUSEHOLD INCOME⁷

NV \$58,003

US \$60,336



% of population that is food insecure¹⁵

NV 12.2% US 12.5%

12.5%



Median Annual Income by Gender⁷

MALE \$49,327

FEMALE \$47,716

Difference in annual earnings between male and female workers (full-time, year round)⁷

\$1,611

NV \$7,559

US \$9,831

Unemployment Rate¹⁸

3.9%

NV 3.7%

US 3.9%

Household income was below poverty level in past 12 months⁷

TOTAL

12.1%

NV 13%

US 13.4%

18 & UNDER

25.2%

NV 18.5%

US 18.4%

OVER 65 +

2.3%

NV 8.5%

US 9.3%

SINGLE FEMALE HOUSEHOLD WITH CHILDREN OR DEPENDENTS

50.0%

NV 31%

US 35.7%

Four-year high school graduation rate¹⁶

NV 83.2%

US 85%

89.4%

Bachelor's degree or higher¹⁷



21.7%

NV 23.7% US 30.9%

MALE 21.9%

NV 23.6% US 30.6%

FEMALE 21.6%

NV 23.8% US 31.2%

25.9%
Total renter households unaffordable¹⁹

NV 47.9% US 49.5%

28.1%

Total owner households unaffordable¹⁹

NV 40.6% US 40%

Individuals with Disabilities

% of total population that has a disability²⁰

15.4%

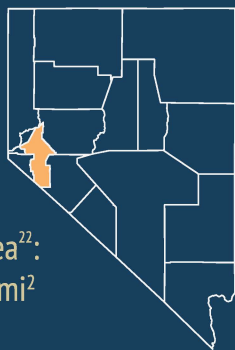
NV 13%

US 12.6%

Rate per 1,000 children with a disability²¹

136.4

NV 122.6



Land Area²²:
2,001.2 mi²

LYON COUNTY PROFILE

2019 Population¹: 56,054 people, 1.8% of Nevada's Population
Population Density: 28 people per square mile (mi²)
County Seat: Yerington
Designation: Rural

TOP PRIORITIES

Behavioral Health



Access to Health Care

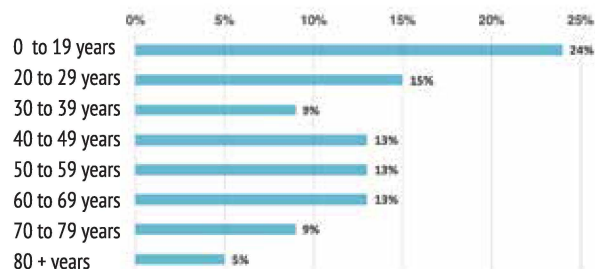


Employment & Poverty



DEMOGRAPHICS

AGE¹



MEDIAN
AGE⁴
43.8

NV 38.7

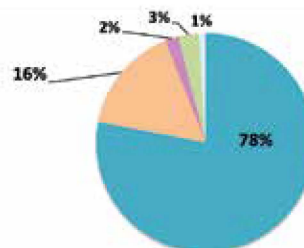
17 & UNDER³ 21.4%

NV 23.5%

OVER 65 +³ 20.5%

NV 15.1%

RACE/ETHNICITY¹



- White, non-Hispanic
- Hispanic
- Asian/Pacific Islander
- American Indian/Alaska Native
- African American/Black

CHILDREN AND ADOLESCENTS

HIGH SCHOOL STUDENTS²

*(Lyon, Mineral, & Storey)



% who seriously considered attempting suicide²

NV 16.6%
US 17.2%

16.9%*

% that have lived with someone who was depressed, mentally ill, and/or suicidal²

NV 30.3%

37.9%*



% who used tobacco one or more times in the last 30 days²

NV 12%
US 19.5%

25.7%*



% who drank alcohol one or more times in the last 30 days²

NV 26.5%
US 29.8%

33.9%*



% who played video or computer games for 3 or more hours per day²

NV 54.9%

49.7%*



% who are overweight or obese²

NV 28.9%
US 30.4%

30.2%*



% who texted or emailed while driving a car or other vehicle²

NV 31.5%
US 39.2%

32.3%*

NV 71.6%

US 77.3%



% of women who received prenatal care in the first trimester⁵

61.9%

NV 69%

US 70.7%



% of children, 19 to 35 months old, who are appropriately vaccinated⁶

66%

NV 6.8%



% of population, 19 and younger, without health insurance⁷

10.7%

NV 27,159



of children enrolled in Nevada Children's Health Insurance Program⁸

558

7.3%*

NV 7.3%
US 7.4%

% of high school students who have ever been physically forced to have sexual intercourse²

9.5%*

NV 8.7%
US 6.7%

% of high school students who did not go to school because they felt unsafe²

If there is statewide or national data available for indicators, it will be presented in the following format. All data represent most recent year available.

*Data reported for these counties combined (Lyon, Mineral, and Storey)

NV %

US %



% of total population with no health insurance⁷

NV 11.2%

11.6%

LEADING CAUSE OF DEATH per 100,000 people¹¹

#1 | Malignant Neoplasms (cancer) (246.1)

% of adults unable to seek a doctor's care due to costs in the last 12 months⁹

17.4%

NV 14.5%

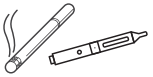
US 12.4%

% of total population enrolled in Medicaid¹⁰

26%

NV 28%

HEALTH BEHAVIORS AND HEALTH OUTCOMES



% of adults who currently smoke⁹

NV 15.7% US 17.1%

21.1%



% of adults who are overweight or obese (combined statistic)⁹

NV 67.7% US 66.6%

68.4%



Rate of emergency room visits due to opioid overdose per 100,000 people¹²

NV 24.2

23.5



% of adults who are binge drinkers⁹

NV 15% US 17.4%

15.8%

Rate of emergency room visits due to alcohol poisoning/overdose per 100,000 people¹³

NV 998.4

757.1



Suicide mortality rate per 100,000 people¹⁴

NV 20.5 US 14.5

24.0

INCOME, EDUCATION, POVERTY, AND INDIVIDUALS WITH DISABILITIES



\$50,920 MEDIAN ANNUAL HOUSEHOLD INCOME⁷

NV \$58,003

US \$60,336



VS

Median Annual Income by Gender⁷

MALE \$47,791

FEMALE \$35,996

Difference in annual earnings between male and female workers (full-time, year round)⁷

\$11,795

NV \$7,559

US \$9,831

Four-year high school graduation rate¹⁶

NV 83.2%

US 85%

84.8%

Bachelor's degree or higher¹⁷



14.7%

NV 23.7% US 30.9%

MALE 13.0%

NV 23.6% US 30.6%

FEMALE 16.4%

NV 23.8% US 31.2%



% of population that is food insecure¹⁵

NV 12.2% US 12.5%

12.3%

Unemployment Rate¹⁸

5.2%

NV 3.7% US 3.9%

Household income was below poverty level in past 12 months⁷

TOTAL 13.7% NV 13% US 13.4%

18 & UNDER 18.3% NV 18.5% US 18.4%

OVER 65 + 7.1% NV 8.5% US 9.3%

SINGLE FEMALE HOUSEHOLD WITH CHILDREN OR DEPENDENTS 37.4% NV 31% US 35.7%

Total renter households unaffordable¹⁹

39.4%

NV 47.9% US 49.5%

Total owner households unaffordable¹⁹

43.2%

NV 40.6% US 40%

Individuals with Disabilities

% of total population that has a disability²⁰

19.1%

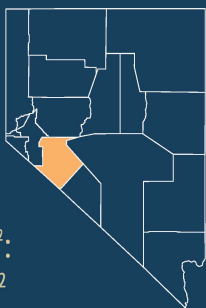
NV 13%

US 12.6%

Rate per 1,000 children with a disability²¹

137.5

NV 122.6



Land Area²²:
3,752.8 mi²

MINERAL COUNTY PROFILE

2019 Population¹: 4,569 people, 0.1% of Nevada's Population

Population Density: 1.2 people per square mile (mi²)

County Seat: Hawthorne

Designation: Frontier

TOP PRIORITIES

Behavioral Health



Chronic Diseases

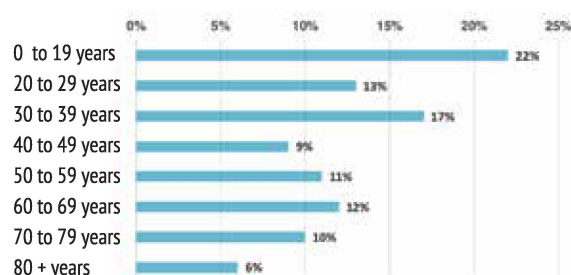


Employment & Poverty



DEMOGRAPHICS

AGE¹



MEDIAN
AGE⁴
46.7

NV 38.7

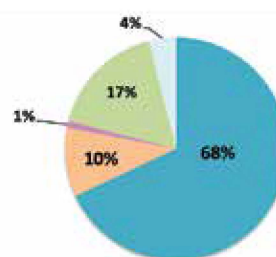
17 & UNDER³ 22.2%

NV 23.5%

OVER 65 +³ 21.3%

NV 15.1%

RACE/ETHNICITY¹



- White, non-Hispanic
- Hispanic
- Asian/Pacific Islander
- American Indian/Alaska Native
- African American/Black

CHILDREN AND ADOLESCENTS

HIGH SCHOOL STUDENTS²

*(Lyon, Mineral, & Storey)



% who seriously considered attempting suicide²

NV 16.6%

US 17.2%

16.9%*

% that have lived with someone who was depressed, mentally ill, and/or suicidal²

NV 30.3%

37.9%*



% who used tobacco one or more times in the last 30 days²

NV 12%

US 19.5%

25.7%*



% who drank alcohol one or more times in the last 30 days²

NV 26.5%

US 29.8%

33.9%*



% who played video or computer games for 3 or more hours per day²

NV 54.9%

49.7%*



% who are overweight or obese²

NV 28.9%

US 30.4%

30.2%*



% who texted or emailed while driving a car or other vehicle²

NV 31.5%

US 39.2%

32.3%*

NV 71.6%

US 77.3%



% of women who received prenatal care in the first trimester⁵

55.8%

NV 69%

US 70.7%



% of children, 19 to 35 months old, who are appropriately vaccinated⁶

69%

NV 6.8%



% of population, 19 and younger, without health insurance⁷

15.5%

NV 27,159



of children enrolled in Nevada Children's Health Insurance Program⁸

53

7.3%*

NV 7.3%

US 7.4%

% of high school students who have ever been physically forced to have sexual intercourse²

9.5%*

NV 8.7%

US 6.7%

% of high school students who did not go to school because they felt unsafe²

If there is statewide or national data available for indicators, it will be presented in the following format. All data represent most recent year available.

*Data reported for these counties combined (Lyon, Mineral, and Storey)

NV %

US %



% of total population with
no health insurance⁷

NV 11.2%

15.3%

LEADING CAUSE
OF DEATH
per 100,000 people¹¹

| #1 | Diseases of the Heart (358.7)

% of adults unable to seek a doctor's care
due to costs in the last 12 months⁹

12.8%

NV 14.5%

US 12.4%

% of total population
enrolled in Medicaid¹⁰

33%

NV 28%

HEALTH BEHAVIORS AND HEALTH OUTCOMES



% of adults who currently smoke⁹

NV 15.7% US 17.1%

31.2%



% of adults who are overweight or
obese (combined statistic)⁹

NV 67.7% US 66.6%

79.6%



Rate of emergency room visits
due to opioid overdose per
100,000 people¹²

NV 24.2

38.0



% of adults who are binge drinkers⁹

NV 15% US 17.4%

13.5%

Rate of emergency room visits due to
alcohol poisoning/overdose per
100,000 people¹³

NV 998.4

1,967.5



Suicide mortality rate per
100,000 people¹⁴

NV 20.5 US 14.5

21.7

INCOME, EDUCATION, POVERTY, AND INDIVIDUALS WITH DISABILITIES



\$39,375
MEDIAN ANNUAL HOUSEHOLD INCOME⁷

NV \$58,003

US \$60,336



Median Annual Income by Gender⁷

MALE \$42,868

FEMALE \$37,596

Difference in annual earnings between male and
female workers (full-time, year round)⁷

\$5,272

NV \$7,559

US \$9,831

Four-year high school
graduation rate¹⁶

NV 83.2%

US 85%

89.3%

Bachelor's degree or higher¹⁷



14.0%

NV 23.7% US 30.9%

MALE 17.6%

NV 23.6% US 30.6%

FEMALE 10.7%

NV 23.8% US 31.2%



% of population that is food insecure¹⁵

NV 12.2% US 12.5%

15.1%

Unemployment Rate¹⁸

5.1%

NV 3.7% US 3.9%

Household income was below poverty level in past 12 months⁷

TOTAL 20.3% NV 13% US 13.4%

18 & UNDER 41.4% NV 18.5% US 18.4%

OVER 65 + 11.4% NV 8.5% US 9.3%

SINGLE FEMALE HOUSEHOLD WITH CHILDREN OR DEPENDENTS 46.2% NV 31% US 35.7%

Total renter households unaffordable¹⁹

28.4%

NV 47.9% US 49.5%

Total owner households unaffordable¹⁹

34.5%

NV 40.6% US 40%

Individuals with Disabilities

% of total population that
has a disability²⁰

21.3%

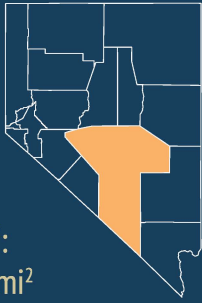
NV 13%

US 12.6%

Rate per 1,000 children
with a disability²¹

110.0

NV 122.6



Land Area²²:
18,181.92 mi²

NYE COUNTY PROFILE

2019 Population¹: 46,400 people, 1.5% of Nevada's Population
Population Density: 2.5 people per square mile (mi²)
County Seat: Tonopah
Designation: Frontier

TOP PRIORITIES

Access to Health Care



Employment, Income,
Poverty, & Housing

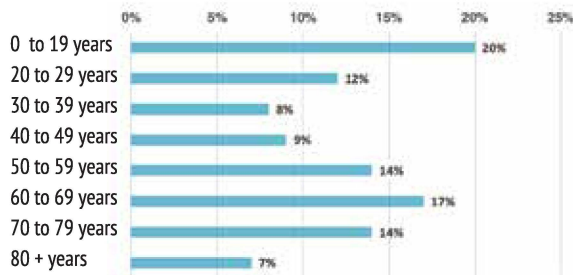


Chronic Diseases



DEMOGRAPHICS

AGE¹



MEDIAN
AGE⁴
51.6

NV 38.7

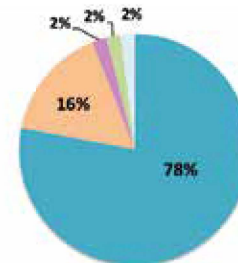
17 & UNDER³ 17.7%

NV 23.5%

OVER 65 +³ 29.0%

NV 15.1%

RACE/ETHNICITY¹



- White, non-Hispanic
- Hispanic
- Asian/Pacific Islander
- American Indian/Alaska Native
- African American/Black

CHILDREN AND ADOLESCENTS

HIGH SCHOOL STUDENTS²

*(Nye and Lincoln)



% who seriously considered attempting suicide²

NV 16.6%
US 17.2%

14.4%*

% that have lived with someone who was depressed, mentally ill, and/or suicidal²

NV 30.3%

31.4%*



% who used tobacco one or more times in the last 30 days²

NV 12%
US 19.5%

12.2%*



% who drank alcohol one or more times in the last 30 days²

NV 26.5%
US 29.8%

23.8%*



% who played video or computer games for 3 or more hours per day²

NV 54.9%

47.5%*



% who are overweight or obese²

NV 28.9%
US 30.4%

28.5%*



% who texted or emailed while driving a car or other vehicle²

NV 31.5%
US 39.2%

42.8%*

NV 71.6%
US 77.3%



% of women who received prenatal care in the first trimester⁵

73.3%

NV 69%
US 70.7%



% of children, 19 to 35 months old, who are appropriately vaccinated⁶

59%

NV 6.8%



% of population, 19 and younger, without health insurance⁷

9.5%

NV 27,159



of children enrolled in Nevada Children's Health Insurance Program⁸

291

7.0%*

NV 7.3%
US 7.4%

% of high school students who have ever been physically forced to have sexual intercourse²

5.8%*

NV 8.7%
US 6.7%

% of high school students who did not go to school because they felt unsafe²

If there is statewide or national data available for indicators, it will be presented in the following format. All data represent most recent year available.

*Data reported for these counties combined (Nye and Lincoln)

NV %

US %



% of total population with
no health insurance⁷

NV 11.2%

12.7%

% of adults unable to seek a doctor's care
due to costs in the last 12 months⁹

12.4%

NV 14.5%

US 12.4%

% of total population
enrolled in Medicaid¹⁰

35%

NV 28%

LEADING CAUSE
OF DEATH
per 100,000 people¹¹ | #1 | Diseases of the Heart (447.4)

HEALTH BEHAVIORS AND HEALTH OUTCOMES



% of adults who currently smoke⁹

NV 15.7% US 17.1%

28.5%



% of adults who are overweight or
obese (combined statistic)⁹

NV 67.7% US 66.6%

68.2%



Rate of emergency room visits
due to opioid overdose per
100,000 people¹²

NV 24.2

33.5



% of adults who are binge drinkers⁹

NV 15% US 17.4%

12.9%

Rate of emergency room visits due to
alcohol poisoning/overdose per
100,000 people¹³

NV 998.4

879.1



Suicide mortality rate per
100,000 people¹⁴

NV 20.5 US 14.5

33.5



\$44,225
MEDIAN ANNUAL HOUSEHOLD INCOME⁷

NV \$58,003

US \$60,336



VS

Median Annual Income by Gender⁷

MALE \$46,971

FEMALE \$36,025

Difference in annual earnings between male and
female workers (full-time, year round)⁷

\$10,946

NV \$7,559

US \$9,831

Four-year high school
graduation rate¹⁶

NV 83.2%

US 85%

80.0%

Bachelor's degree or higher¹⁷



11.5%

NV 23.7% US 30.9%

MALE 11.6%

NV 23.6% US 30.6%

FEMALE 11.4%

NV 23.8% US 31.2%



% of population that is food insecure¹⁵

NV 12.2% US 12.5%

14.1%

Unemployment Rate¹⁸

5.7%

NV 3.7% US 3.9%

Household income was below poverty level in past 12 months⁷

TOTAL 17.3% NV 13% US 13.4%

18 & UNDER 26.7% NV 18.5% US 18.4%

OVER 65 + 10.5% NV 8.5% US 9.3%

SINGLE FEMALE HOUSEHOLD WITH CHILDREN OR DEPENDENTS 46.7% NV 31% US 35.7%

Individuals with Disabilities

% of total population that
has a disability²⁰

25.9%

NV 13%

US 12.6%

Rate per 1,000 children
with a disability²¹

146.5

NV 122.6

42.8%

Total renter households unaffordable¹⁹

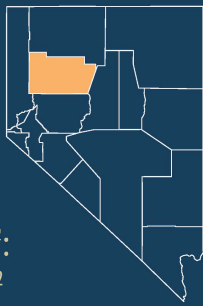
NV 47.9% US 49.5%

44.5%

Total owner households unaffordable¹⁹

NV 40.6% US 40%





Land Area²²:
6,036.6 mi²

PERSHING COUNTY PROFILE

2019 Population¹: 4,949 people, 0.16% of Nevada's Population
Population Density: 0.8 people per square mile (mi²)
County Seat: Lovelock
Designation: Frontier

TOP PRIORITIES

Access to Health Care



Employment & Poverty

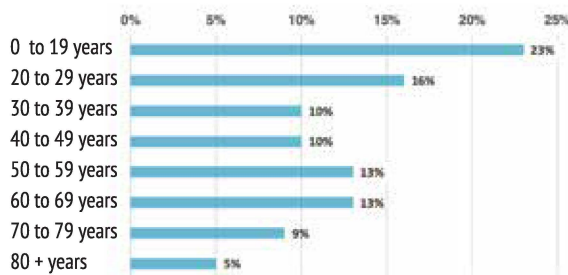


Behavioral Health



DEMOGRAPHICS

AGE¹



MEDIAN
AGE⁴
43.1

NV 38.7

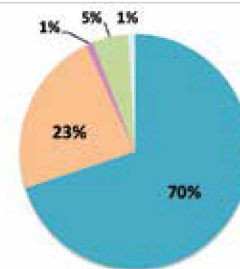
17 & UNDER³ 19.7%

NV 23.5%

OVER 65 +³ 20.4%

NV 15.1%

RACE/ETHNICITY¹



- White, non-Hispanic
- Hispanic
- Asian/Pacific Islander
- American Indian/Alaska Native
- African American/Black

CHILDREN AND ADOLESCENTS

HIGH SCHOOL STUDENTS²

*(Churchill, Humboldt, Pershing & Lander)



% who seriously considered attempting suicide²

NV 16.6%
US 17.2%

19.8%*

% that have lived with someone who was depressed, mentally ill, and/or suicidal²

NV 30.3%

32.9%*



% who used tobacco one or more times in the last 30 days²

NV 12%
US 19.5%

22.6%*



% who drank alcohol one or more times in the last 30 days²

NV 26.5%
US 29.8%

34.1%*



% who played video or computer games for 3 or more hours per day²

NV 54.9%

46.6%*



% who are overweight or obese²

NV 28.9%
US 30.4%

31.5%*



% who texted or emailed while driving a car or other vehicle²

NV 31.5%
US 39.2%

42.6%*

NV 71.6%
US 77.3%



% of women who received prenatal care in the first trimester⁵

51.8%

NV 69%
US 70.7%



% of children, 19 to 35 months old, who are appropriately vaccinated⁶

66%

NV 6.8%



% of population, 19 and younger, without health insurance⁷

16.7%

NV 27,159



of children enrolled in Nevada Children's Health Insurance Program⁸

38

10.3%*

NV 7.3%
US 7.4%

% of high school students who have ever been physically forced to have sexual intercourse²

8.2%*

NV 8.7%
US 6.7%

% of high school students who did not go to school because they felt unsafe²

If there is statewide or national data available for indicators, it will be presented in the following format. All data represent most recent year available.

*Data reported for these counties combined (Churchill, Humboldt, Pershing, and Lander)

NV %

US %



PERSHING COUNTY PROFILE

ACCESS TO HEALTH CARE



% of total population with no health insurance⁷

NV 11.2%

16.5%

% of adults unable to seek a doctor's care due to costs in the last 12 months⁹

20.4%

NV 14.5%

US 12.4%

% of total population enrolled in Medicaid¹⁰

26%

NV 28%

LEADING CAUSE OF DEATH per 100,000 people¹¹

| #1 | Diseases of the Heart (156.6)

HEALTH BEHAVIORS AND HEALTH OUTCOMES



% of adults who currently smoke⁹

NV 15.7% US 17.1%

24.0%



% of adults who are overweight or obese (combined statistic)⁹

NV 67.7% US 66.6%

78.1%



Rate of emergency room visits due to opioid overdose per 100,000 people¹²

NV 24.2

41.0



% of adults who are binge drinkers⁹

NV 15% US 17.4%

12.0%

Rate of emergency room visits due to alcohol poisoning/overdose per 100,000 people¹³

NV 998.4

928.2



Suicide mortality rate per 100,000 people¹⁴

NV 20.5 US 14.5

41.0

INCOME, EDUCATION, POVERTY, AND INDIVIDUALS WITH DISABILITIES



\$52,308

MEDIAN ANNUAL HOUSEHOLD INCOME⁷

NV \$58,003

US \$60,336



% of population that is food insecure¹⁵

NV 12.2% US 12.5%

11.1%



VS

Median Annual Income by Gender⁷

MALE \$51,875

FEMALE \$35,521

Difference in annual earnings between male and female workers (full-time, year round)⁷

\$16,354

NV \$7,559

US \$9,831

Unemployment Rate¹⁸

3.6%

NV 3.7%

US 3.9%

Household income was below poverty level in past 12 months⁷

TOTAL

15.0%

NV 13%

US 13.4%

18 & UNDER

22.8%

NV 18.5%

US 18.4%

OVER 65 +

15.9%

NV 8.5%

US 9.3%

SINGLE FEMALE HOUSEHOLD WITH CHILDREN OR DEPENDENTS

68.6%

NV 31%

US 35.7%

Four-year high school graduation rate¹⁶

NV 83.2%

US 85%

96.3%

Bachelor's degree or higher¹⁷



13.7%

NV 23.7% US 30.9%

MALE 11.4%

NV 23.6% US 30.6%

FEMALE 18.4%

NV 23.8% US 31.2%

Total renter households unaffordable¹⁹

39.2%

NV 47.9% US 49.5%

Total owner households unaffordable¹⁹

39.3%

NV 40.6% US 40%

Individuals with Disabilities

% of total population that has a disability²⁰

16.1%

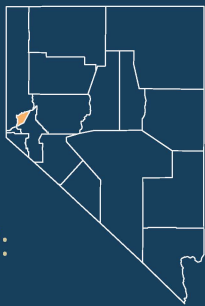
NV 13%

US 12.6%

Rate per 1,000 children with a disability²¹

143.5

NV 122.6



Land Area²²:
262.9 mi²

STOREY COUNTY PROFILE

2019 Population¹: 4,196 people, 0.1% of Nevada's Population
Population Density: 15 people per square mile (mi²)
County Seat: Virginia City
Designation: Rural

TOP PRIORITIES

Behavioral Health

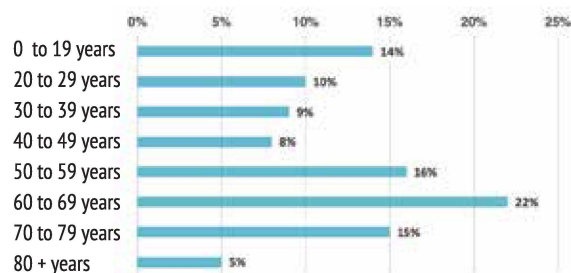


Access to Health Care



DEMOGRAPHICS

AGE¹



MEDIAN
AGE⁴
54.7

NV 38.7

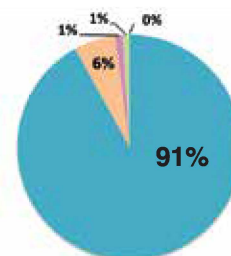
17 & UNDER³ 13.5%

NV 23.5%

OVER 65 +³ 30.0%

NV 15.1%

RACE/ETHNICITY¹



- White, non-Hispanic
- Hispanic
- Asian/Pacific Islander
- American Indian/Alaska Native
- African American/Black

CHILDREN AND ADOLESCENTS

HIGH SCHOOL STUDENTS²

*(Lyon, Mineral, & Storey)



% who seriously considered attempting suicide²

NV 16.6%
US 17.2%

16.9%*

% that have lived with someone who was depressed, mentally ill, and/or suicidal²

NV 30.3%

37.9%*



% who used tobacco one or more times in the last 30 days²

NV 12%
US 19.5%

25.7%*



% who drank alcohol one or more times in the last 30 days²

NV 26.5%
US 29.8%

33.9%*



% who played video or computer games for 3 or more hours per day²

NV 54.9%

49.7%*



% who are overweight or obese²

NV 28.9%
US 30.4%

30.2%*



% who texted or emailed while driving a car or other vehicle²

NV 31.5%
US 39.2%

32.3%*

NV 71.6%

US 77.3%



% of women who received prenatal care in the first trimester⁵

71.6%

NV 69%

US 70.7%



% of children, 19 to 35 months old, who are appropriately vaccinated⁶

64%

NV 6.8%



% of population, 19 and younger, without health insurance⁷

5.1%

NV 27,159



of children enrolled in Nevada Children's Health Insurance Program⁸

5

7.3%*

NV 7.3%
US 7.4%

% of high school students who have ever been physically forced to have sexual intercourse²

9.5%*

NV 8.7%
US 6.7%

% of high school students who did not go to school because they felt unsafe²

If there is statewide or national data available for indicators, it will be presented in the following format. All data represent most recent year available.

*Data reported for these counties combined (Lyon, Mineral, and Storey)

NV %

US %



STOREY COUNTY PROFILE

ACCESS TO HEALTH CARE



% of total population with no health insurance⁷

NV 11.2%

8.8%

% of adults unable to seek a doctor's care due to costs in the last 12 months⁹

16.9%

NV 14.5%

US 12.4%

% of total population enrolled in Medicaid¹⁰

5%

NV 28%

LEADING CAUSE OF DEATH per 100,000 people¹¹

| #1 | Malignant Neoplasms (cancer) (238.2)

HEALTH BEHAVIORS AND HEALTH OUTCOMES



% of adults who currently smoke⁹

NV 15.7%

US 17.1%

23.2%



% of adults who are binge drinkers⁹

NV 15%

US 17.4%

26.8%



% of adults who are overweight or obese (combined statistic)⁹

NV 67.7%

US 66.6%

56.7%

Rate of emergency room visits due to alcohol poisoning/overdose per 100,000 people¹³

NV 998.4

189.4



Rate of emergency room visits due to opioid overdose per 100,000 people¹²

NV 24.2

0.0



Suicide mortality rate per 100,000 people¹⁴

NV 20.5

US 14.5

18.3

INCOME, EDUCATION, POVERTY, AND INDIVIDUALS WITH DISABILITIES



\$63,607

MEDIAN ANNUAL HOUSEHOLD INCOME⁷

NV \$58,003

US \$60,336



% of population that is food insecure¹⁵

NV 12.2%

US 12.5%

10.2%



VS

Median Annual Income by Gender⁷

MALE \$59,688

FEMALE \$50,897

Difference in annual earnings between male and female workers (full-time, year round)⁷

\$8,791

NV \$7,559

US \$9,831

Unemployment Rate¹⁸

4.6%

NV 3.7%

US 3.9%

Household income was below poverty level in past 12 months⁷

TOTAL

7.7%

NV 13%

US 13.4%

18 & UNDER

16.4%

NV 18.5%

US 18.4%

OVER 65 +

2.2%

NV 8.5%

US 9.3%

SINGLE FEMALE HOUSEHOLD WITH CHILDREN OR DEPENDENTS

N/A

NV 31%

US 35.7%

Four-year high school graduation rate¹⁶

NV 83.2%

US 85%

94.1%

Bachelor's degree or higher¹⁷



22.9%

NV 23.7%

US 30.9%

MALE 29.3%

NV 23.6%

US 30.6%

FEMALE 16.5%

NV 23.8%

US 31.2%

Total renter households unaffordable¹⁹

12.8%

NV 47.9%

US 49.5%

Total owner households unaffordable¹⁹

40.4%

NV 40.6%

US 40%

Individuals with Disabilities

% of total population that has a disability²⁰

25.2%

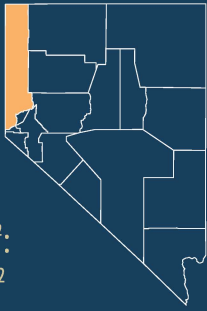
NV 13%

US 12.6%

Rate per 1,000 children with a disability²¹

122.4

NV 122.6



Land Area²²:
6,302.4 mi²

WASHOE COUNTY PROFILE

2019 Population¹: 459,210 people, 15% of Nevada's Population
Population Density: 73 people per square mile (mi²)
County Seat: Reno
Designation: Urban

TOP PRIORITIES

Behavioral Health



Housing

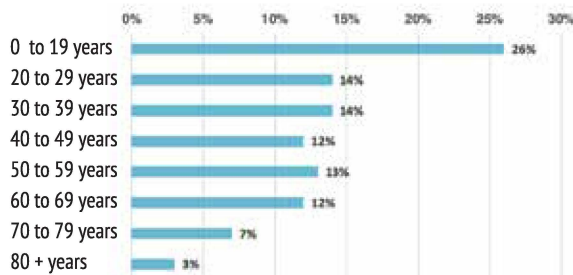


Chronic & Communicable Diseases



DEMOGRAPHICS

AGE¹



MEDIAN
AGE⁴
38

NV 38.7

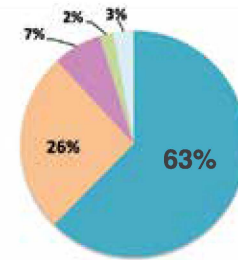
17 & UNDER³ 23.1%

NV 23.5%

OVER 65 +³ 15.7%

NV 15.1%

RACE/ETHNICITY¹



- White, non-Hispanic
- Hispanic
- Asian/Pacific Islander
- American Indian/Alaska Native
- African American/Black

CHILDREN AND ADOLESCENTS

HIGH SCHOOL STUDENTS²



% who seriously considered attempting suicide²

NV 16.6%

US 17.2%

18.6%

% that have lived with someone who was depressed, mentally ill, and/or suicidal²

NV 30.3%

34.5%



% who used tobacco one or more times in the last 30 days²

NV 12%

US 19.5%

13.5%



% who drank alcohol one or more times in the last 30 days²

NV 26.5%

US 29.8%

27.2%



% who played video or computer games for 3 or more hours per day²

NV 54.9%

46.7%



% who are overweight or obese²

NV 28.9%

US 30.4%

28.1%



% who texted or emailed while driving a car or other vehicle²

NV 31.5%

US 39.2%

32.3%

NV 71.6%

US 77.3%



% of women who received prenatal care in the first trimester⁵

58.5%

NV 69%

US 70.7%



% of children, 19 to 35 months old, who are appropriately vaccinated⁶

76%

NV 6.8%



% of population, 18 and younger, without health insurance⁷

5.8%

NV 27,159



of children enrolled in Nevada Children's Health Insurance Program⁸

4,392

7.6%

NV 7.3%

US 7.4%

% of high school students who have ever been physically forced to have sexual intercourse²

12.7%

NV 8.7%

US 6.7%

% of high school students who did not go to school because they felt unsafe²

If there is statewide or national data available for indicators, it will be presented in the following format. All data represent most recent year available.

NV %

US %



WASHOE COUNTY PROFILE

ACCESS TO HEALTH CARE



% of total population with no health insurance⁷

NV 11.2%

9.9%

% of adults unable to seek a doctor's care due to costs in the last 12 months⁹

15.9%

NV 14.5%

US 12.4%

% of total population enrolled in Medicaid¹⁰

23%

NV 28%

LEADING CAUSE OF DEATH
per 100,000 people¹¹ | #1 | Diseases of the Heart (200.9)

HEALTH BEHAVIORS AND HEALTH OUTCOMES



% of adults who currently smoke⁹

NV 15.7% US 17.1%

15.2%



% of adults who are overweight or obese (combined statistic)⁹

NV 67.7% US 66.6%

63.1%



Rate of emergency room visits due to opioid overdose per 100,000 people¹²

NV 24.2

30.3



% of adults who are binge drinkers⁹

NV 15% US 17.4%

19.4%

Rate of emergency room visits due to alcohol poisoning/overdose per 100,000 people¹³

NV 998.4

1,267.0



Suicide mortality rate per 100,000 people¹⁴

NV 20.5 US 14.5

16.7

INCOME, EDUCATION, POVERTY, AND INDIVIDUALS WITH DISABILITIES



\$61,498
MEDIAN ANNUAL HOUSEHOLD INCOME⁷

NV \$58,003

US \$60,336



% of population that is food insecure¹⁵

NV 12.2% US 12.5%

11.2%



Median Annual Income by Gender⁷

MALE \$48,018

FEMALE \$40,158

Difference in annual earnings between male and female workers (full-time, year round)⁷

\$7,860

NV \$7,559

US \$9,831

Unemployment Rate¹⁸

4.1%

NV 3.7%

US 3.9%

Household income was below poverty level in past 12 months⁷

TOTAL 10.8% NV 13% US 13.4%

18 & UNDER 12.7% NV 18.5% US 18.4%

OVER 65 + 8.5% NV 8.5% US 9.3%

SINGLE FEMALE HOUSEHOLD WITH CHILDREN OR DEPENDENTS 22.6% NV 31% US 35.7%

Four-year high school graduation rate¹⁶

NV 83.2%

US 85%

84.4%

Bachelor's degree or higher¹⁷



29.8%

NV 23.7% US 30.9%

MALE 29.8%

NV 23.6% US 30.6%

FEMALE 29.8%

NV 23.8% US 31.2%

45.7%
Total renter households unaffordable¹⁹

NV 47.9% US 49.5%

35.8%
Total owner households unaffordable¹⁹

NV 40.6% US 40%

Individuals with Disabilities

% of total population that has a disability²⁰

12.1%

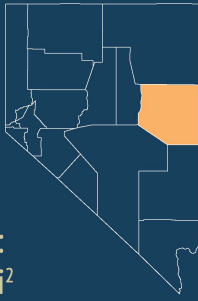
NV 13%

US 12.6%

Rate per 1,000 children with a disability²¹

125.8

NV 122.6



Land Area²²:
8,875.65 mi²

WHITE PINE COUNTY PROFILE

2019 Population¹: 9,507 people, 0.3% of Nevada's Population
Population Density: 1 people per square mile (mi²)
County Seat: Ely
Designation: Frontier

TOP PRIORITIES

Access to Health Care



Education

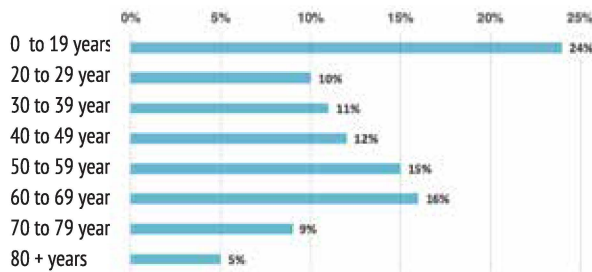


Behavioral Health



DEMOGRAPHICS

AGE¹



MEDIAN
AGE⁴
39.4

NV 38.7

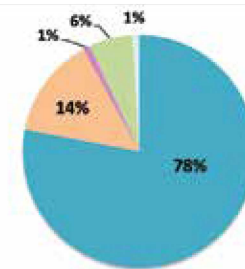
7 & UNDER³ 22.1%

NV 23.5%

OVER 65 +³ 22.2%

NV 15.1%

RACE/ETHNICITY¹



- White, non-Hispanic
- Hispanic
- Asian/Pacific Islander
- American Indian/Alaska Native
- African American/Black

CHILDREN AND ADOLESCENTS

HIGH SCHOOL STUDENTS²

*(Elko, White Pine, & Eureka)



% who seriously considered attempting suicide²

NV 16.6%
US 17.2%

22.2%*

% that have lived with someone who was depressed, mentally ill, and/or suicidal²

NV 30.3%

35.3%*



% who used tobacco one or more times in the last 30 days²

NV 12%
US 19.5%

19.6%*



% who drank alcohol one or more times in the last 30 days²

NV 26.5%
US 29.8%

36.6%*



% who played video or computer games for 3 or more hours per day²

NV 54.9%

38.5%*



% who are overweight or obese²

NV 28.9%
US 30.4%

28.5%*



% who texted or emailed while driving a car or other vehicle²

NV 31.5%
US 39.2%

40.6%*

NV 71.6%
US 77.3%



% of women who received prenatal care in the first trimester⁵

61.0%

NV 69%
US 70.7%



% of children, 19 to 35 months old, who are appropriately vaccinated⁶

61%

NV 6.8%



% of population, 19 and younger, without health insurance⁷

8.1%

NV 27,159



of children enrolled in Nevada Children's Health Insurance Program⁸

29

14.7%*

NV 7.3%
US 7.4%

% of high school students who have ever been physically forced to have sexual intercourse²

8.1%*

NV 8.7%
US 6.7%

% of high school students who did not go to school because they felt unsafe²

If there is statewide or national data available for indicators, it will be presented in the following format. All data represent most recent year available.

*Data reported for these counties combined (Elko, White Pine, and Eureka)

NV %

US %



WHITE PINE COUNTY PROFILE

ACCESS TO HEALTH CARE



% of total population with no health insurance⁷

NV 11.2%

11.2%

% of adults unable to seek a doctor's care due to costs in the last 12 months⁹

7.2%

NV 14.5%

US 12.4%

% of total population enrolled in Medicaid¹⁰

22%

NV 28%

LEADING CAUSE OF DEATH per 100,000 people¹¹

| #1 | Diseases of the Heart (182.4)

HEALTH BEHAVIORS AND HEALTH OUTCOMES



% of adults who currently smoke⁹

NV 15.7% US 17.1%

13.3%



% of adults who are overweight or obese (combined statistic)⁹

NV 67.7% US 66.6%

63.9%



Rate of emergency room visits due to opioid overdose per 100,000 people¹²

NV 24.2

40.3



% of adults who are binge drinkers⁹

NV 15% US 17.4%

8.5%

Rate of emergency room visits due to alcohol poisoning/overdose per 100,000 people¹³

NV 998.4

983.3



Suicide mortality rate per 100,000 people¹⁴

NV 20.5 US 14.5

30.8

INCOME, EDUCATION, POVERTY, AND INDIVIDUALS WITH DISABILITIES



\$60,358

MEDIAN ANNUAL HOUSEHOLD INCOME⁷

NV \$58,003

US \$60,336



% of population that is food insecure¹⁵

NV 12.2% US 12.5%

10.8%



VS

Median Annual Income by Gender⁷

MALE \$58,824

FEMALE \$40,578

Difference in annual earnings between male and female workers (full-time, year round)⁷

\$18,246

NV \$7,559

US \$9,831

Four-year high school graduation rate¹⁶

NV 83.2%

US 85%

66.9%

Bachelor's degree or higher¹⁷



14.6%

NV 23.7% US 30.9%

MALE 11.6%

NV 23.6% US 30.6%

FEMALE 18.9%

NV 23.8% US 31.2%

Unemployment Rate¹⁸

3.5%

NV 3.7% US 3.9%

Household income was below poverty level in past 12 months⁷

TOTAL 13.0%

NV 13%

US 13.4%

18 & UNDER 21.3%

NV 18.5%

US 18.4%

OVER 65 + 7.4%

NV 8.5%

US 9.3%

SINGLE FEMALE HOUSEHOLD WITH CHILDREN OR DEPENDENTS 45.1%

NV 31%

US 35.7%

Individuals with Disabilities

% of total population that has a disability²⁰

18.6%

NV 13%

US 12.6%

Rate per 1,000 children with a disability²¹

124.5

NV 122.6

Total renter households unaffordable¹⁹

31.7%

NV 47.9% US 49.5%

Total owner households unaffordable¹⁹

26.9%

NV 40.6% US 40%





1. 2019 data: Hardcastle, J. (2018). Nevada County Age, Sex, Race, and Hispanic Origin Estimates and Projections 2000 to 2037: Estimates from 2000 to 2017 and Projections from 2018 to 2037. Carson City, NV.
2. 2017 County/Nevada data: Lensch, T., Martin, H., Zhang, F., Parrish, B., Clements-Nolle, K., Yang, W. State of Nevada, Division of Public and Behavioral Health and the University of Nevada, Reno. 2017 Nevada High School Youth Risk Behavior Survey (YRBS) Report. Reno, NV.
2017 United States data: Centers for Disease Control and Prevention. High School YRBS Trends. <https://nccd.cdc.gov/youthonline/> retrieved Aug 2019.
3. 2019 data: Griswold, T. Packham, J, Etchegoyhen, L., Young, V., & Friend, J. (2019). Nevada Rural and Frontier Health Data Book - Ninth Edition. Reno, NV.
4. 2013-2017 aggregate data: U.S. Census Bureau. American Community Survey, 2013-2017 American Community Survey 5-Year Estimates, Table B01002.
5. 2015-2018 aggregate Rural/Frontier County data: Nevada Department of Health and Human Services, Office of Analytics. Nevada Electronic Birth and Demographic Data. Data provided up on request. Carson City, NV.
2018 Urban Counties/Nevada data: Nevada Department of Health and Human Services, Office of Analytics. Nevada Electronic Birth and Demographic Data. Data provided up on request. Carson City, NV.
2017 United States data: Martin JA, Hamilton BE, Osterman MJK, Driscoll AK, Drake P. Births: Final data for 2017. (2018). National Vital Statistics Reports; vol 67 no 8. Hyattsville, MD: National Center for Health Statistics.
6. 2018 County/Nevada data: Department of Health and Human Services, Office of Analytics. NV WebIZ replica database using SQL Studio. Data provided upon request. Carson City, NV. 2017.
2016 United States data: Centers for Disease Control and Prevention. <https://www.cdc.gov/nchs/data/hus/2017/066.pdf> retrieved Aug 2019.
7. 2013-2017 aggregate Rural/Frontier County/Carson City data: U.S. Census Bureau, American Community Survey, 2013-2017 American Community Survey 5-Year Estimates, Table DP03.
2017 Clark/Washoe/Nevada/United States data: U.S. Census Bureau, American Community Survey, 2013-2017 American Community Survey 1-Year Estimates, Table DP03.
8. 2018 data: Griswold, T. Packham, J, Etchegoyhen, L., Young, V., & Friend, J. (2019). Nevada Rural and Frontier Health Data Book - Ninth Edition. Reno, NV.
9. 2013-2017 Rural/Frontier County data: Nevada Department of Health and Human Services, Office of Analytics. Nevada Behavioral Risk Factor Surveillance Survey. Data provided upon request. Carson City, NV.
2018 Urban County/Nevada data: Nevada Department of Health and Human Services, Office of Analytics. Nevada Behavioral Risk Factor Surveillance Survey. Data provided upon request. Carson City, NV.
2017 United States data: Centers for Disease Control and Prevention, National Center for Chronic Disease Prevention and Health Promotion, Division of Population Health. BRFSS Prevalence & Trends Data [online]. 2015. <https://www.cdc.gov/brfss/brfssprevalence/> Retrieved July 2019.
10. Calculated using 2018 Medicaid enrollment data and 2018 population estimate data
2018 Medicaid enrollment data: Nevada Department of Health and Human Services, Office of Analytics. Data provided upon request. Carson City, NV.
Population estimate data: Hardcastle, J. (2018). Nevada County Age, Sex, Race, and Hispanic Origin Estimates and Projections 2000 to 2037: Estimates from 2000 to 2017 and Projections from 2018 to 2037. Carson City, NV.



11. 2018 (preliminary data) County/Nevada data: Nevada Department of Health and Human Service, Office of Analytics. Electronic Death Registry Data. Data provided upon request. Carson City, NV.

12. 2015-2018 aggregate Rural/Frontier County data: Nevada Department of Health and Human Services, Office of Analytics. Data provided upon request. Carson City, NV. Opioid overdose includes Principal Diagnosis: ICD-9-CM 965.0; ICD-10-CM T40.0-T40.4, T40.6; All Diagnosis: ICD-9-CM E850.0-E850.2.

2018 Urban County/Nevada data: Nevada Department of Health and Human Services, Office of Analytics. Data provided upon request. Carson City, NV. Opioid overdose includes Principal Diagnosis: ICD-9-CM 965.0; ICD-10-CM T40.0-T40.4, T40.6; All Diagnosis: ICD-9-CM E850.0-E850.2.

13. 2015-2018 aggregate Rural/Frontier County data: Nevada Department of Health and Human Services, Office of Analytics. Data provided upon request. Carson City, NV. Alcohol poisoning/overdose includes All Diagnosis: ICD-9-CM 291, 303, 305.0, 357.5, 425.5, 535.3, 571.0, 571.1, 571.2, 571.3, 790.3, 980.0, 980.1, E860.00-E860.02; ICD-10-CM F10, K70, G62.1, I42.6, K29.2, R78.0, T51.0, P04.3

2018 Urban County/Nevada data: Nevada Department of Health and Human Services, Office of Analytics. Data provided upon request. Carson City, NV. Alcohol poisoning/overdose includes All Diagnosis: ICD-9-CM 291, 303, 305.0, 357.5, 425.5, 535.3, 571.0, 571.1, 571.2, 571.3, 790.3, 980.0, 980.1, E860.00-E860.02; ICD-10-CM F10, K70, G62.1, I42.6, K29.2, R78.0, T51.0, P04.3

14. 2015-2018 aggregate Rural/Frontier County data: Nevada Department of Health and Human Services, Office of Analytics. Electronic Death Registry System. Data provided upon request. Carson City, NV.

2018 (preliminary data) Urban County/Nevada data: Nevada Department of Health and Human Services, Office of Analytics. Electronic Death Registry System. Data provided upon request. Carson City, NV.

2017 United States data: Centers for Disease Control and Prevention, National Center for Health Statistics. Underlying Cause of Death 1999-2017 on CDC WONDER Online Database, released December, 2018. Data are from the Multiple Cause of Death Files, 1999-2017, as compiled from data provided by the 57 vital statistics jurisdictions through the Vital Statistics Cooperative Program. <http://wonder.cdc.gov/ucd-icd10.html> retrieved Aug 2019.

15. 2017 data: Feeding America, Mind the Meal Gap. Interactive Map Food Insecurity in the United States. <http://map.feedingamerica.org/> retrieved March and Aug 2019.

16. 2017-2018 School Year County/Nevada data: Nevada Department of Education. Nevada Report Card Accountability Portal. www.Nevadareportcard.com Retrieved March 2019.

2016-2017 School Year United States data: National Center for Education Statistics. Table 219.46. Public high school 4-year adjusted cohort graduation rate (ACGR), by selected student characteristics and state: 2010-11 through 2016-17. https://nces.ed.gov/programs/digest/d18/tables/dt18_219.46.asp retrieved Aug 2019.

17. 2013-2017 aggregate data: U.S. Census Bureau. American Community Survey, 2013-2017 American Community Survey 5-Year Estimates, Table S1501.

18. 2018 County/Nevada data: Griswold, T. Packham, J. Etchegoyhen, L., Young, V., & Friend, J. (2019). Nevada Rural and Frontier Health Data Book - Ninth Edition. Reno, NV.

2018 United States data: US Department of Labor, Bureau of Labor Statistics. (n.d). Labor Force Statistics from the Current Community Population Survey. Employment status of the civilian noninstitutional population, 1948 to date. <https://www.bls.gov/cps/cpsaat01.pdf> retrieved Aug 2019.

19. 2013-2017 aggregate Rural/Frontier County and Carson City data: U.S. Census Bureau, American Community Survey, 2013-2017 American Community Survey 5-Year Estimates, Table DP04.

2017 Urban County/Nevada/United States data: U.S. Census Bureau, American Community Survey, 2013-2017 American Community Survey 1-Year Estimates, Table DP04.



20. 2013-2017 aggregate Rural/Frontier County and Carson City data: U.S. Census Bureau, American Community Survey, 2013-2017 American Community Survey 5-Year Estimates, Table S1810.
21. 2017 data: Nevada Instant Atlas. (2019). County Level Population Health Indicators Database. <https://med.unr.edu/statewide/instant-atlas/county-data-map> retrieved March 2019.
22. 2010 data: U.S. Census Bureau, 2010 Census. Census 2010 Summary File 1, Geographic Header Record G001.
23. 2017-2018 data for Esmeralda County: Department of Health and Human Services, Office of Analytics. NV WebIZ replica database and Nevada State Demographer. Data provided upon request. Carson City, NV.