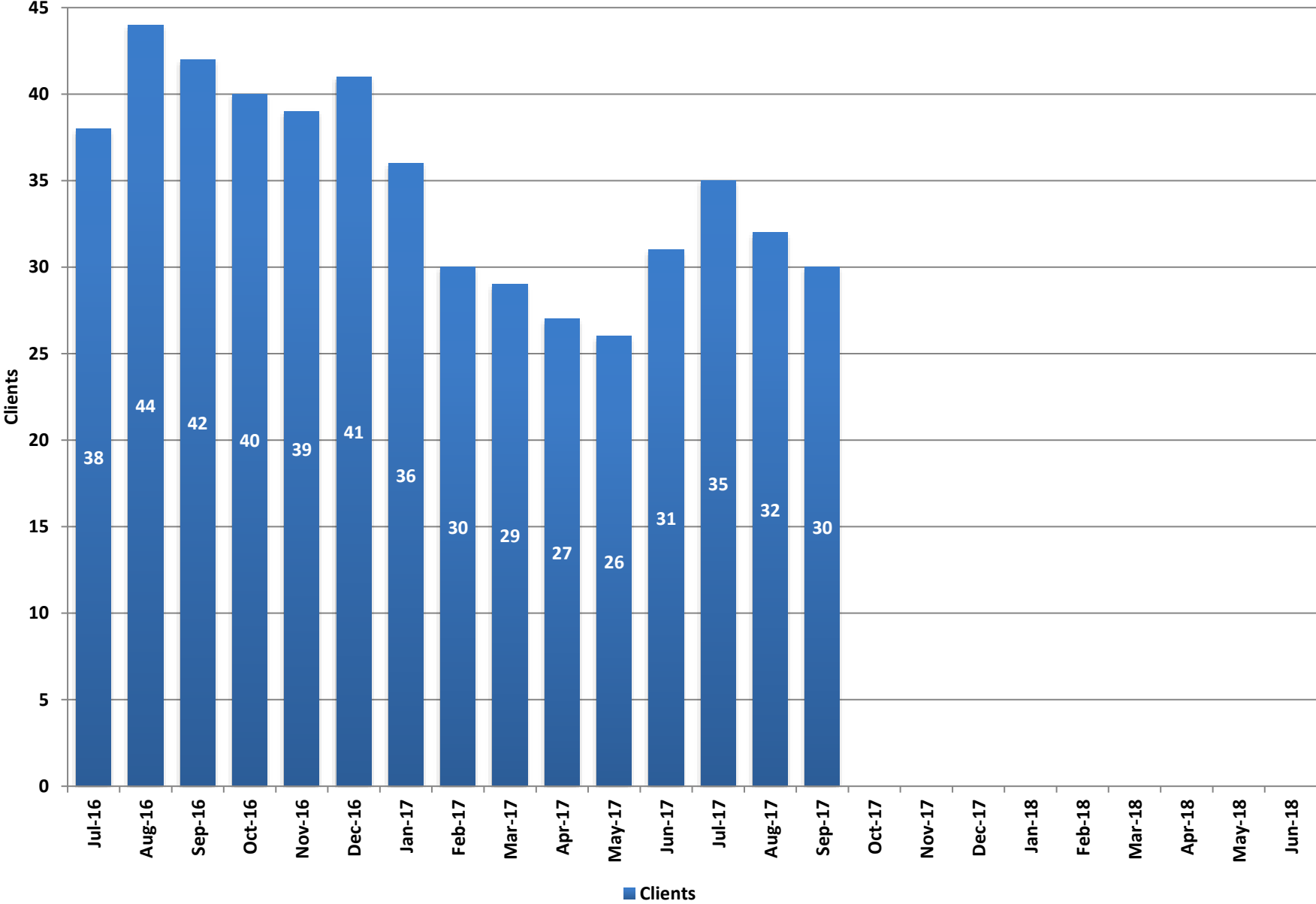


# **DHHS Facilities Chart Pack**

---

**October 2017**

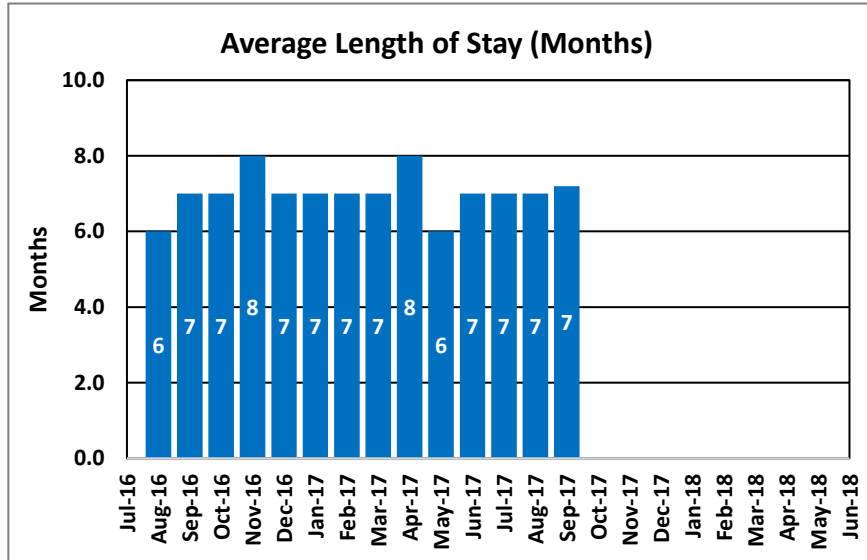
# Summit View



## Summit View

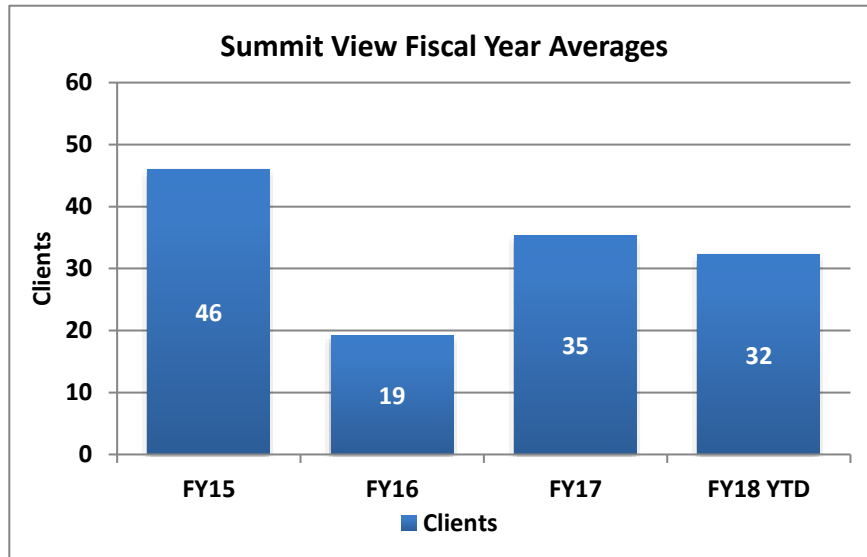
Summit View is a maximum security juvenile justice facility for males located in Las Vegas. Previously operated under contract with the Rite of Passage non-profit between December 2013 and March 2015, Summit View recently reopened as a state run facility in February 2016. The current bed capacity is 48 and staffing capacity is 40.

Month	Clients	Average Length of Stay (Months)
Jul-16	38	
Aug-16	44	6
Sep-16	42	7
Oct-16	40	7
Nov-16	39	8
Dec-16	41	7
Jan-17	36	7
Feb-17	30	7
Mar-17	29	7
Apr-17	27	8
May-17	26	6
Jun-17	31	7
Jul-17	35	7
Aug-17	32	7
Sep-17	30	7
Oct-17		
Nov-17		
Dec-17		
Jan-18		
Feb-18		
Mar-18		
Apr-18		
May-18		
Jun-18		



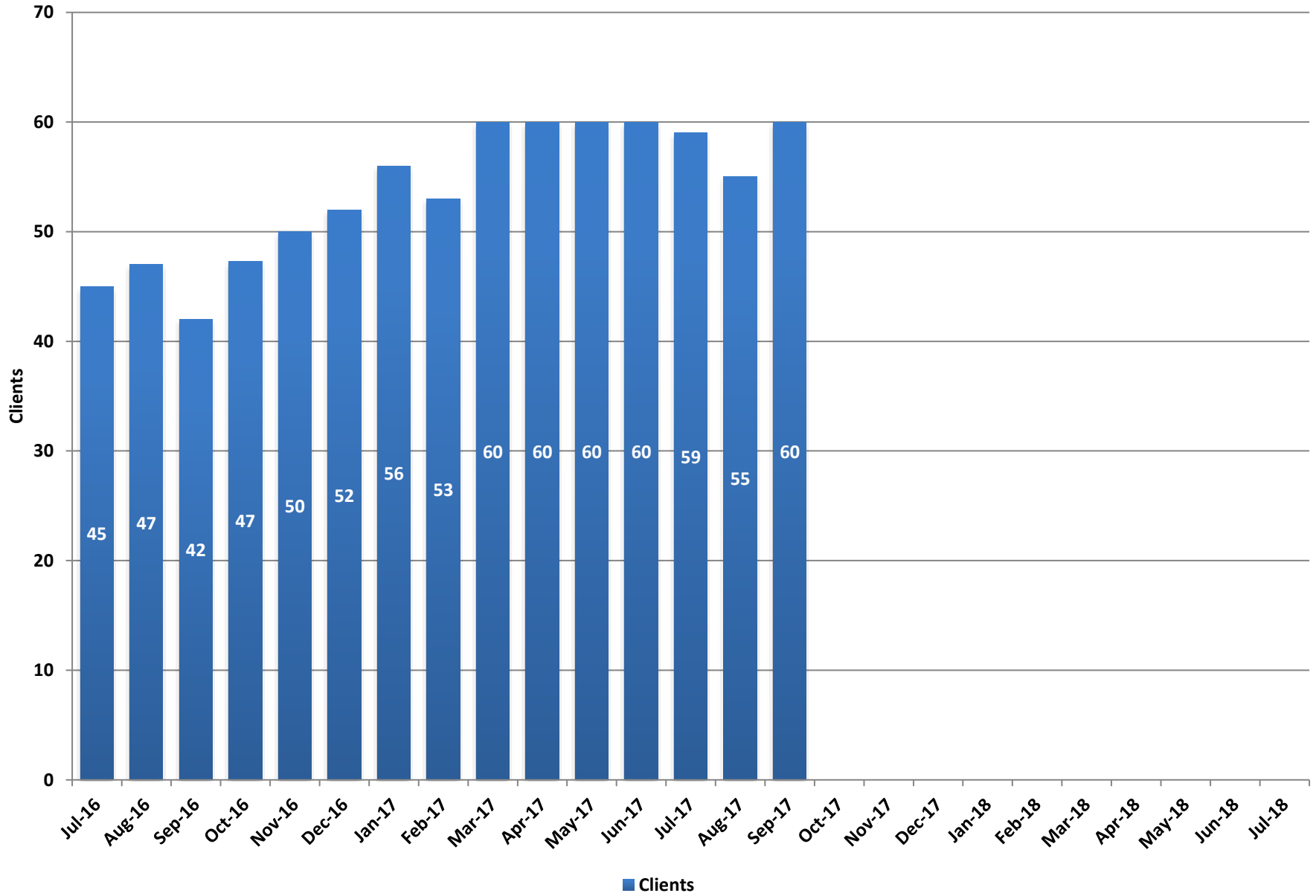
**Fiscal Year Averages**

Fiscal Year	Clients	Average Length of Stay (Months)
FY15	46	
FY16	19	
FY17	35	7
FY18 YTD	32	7



*Note: No clients were released between February 2016 through July 2016.*

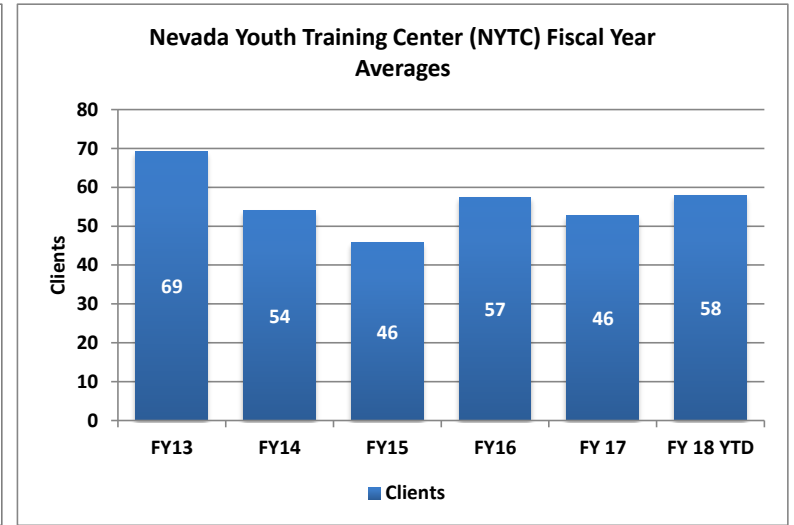
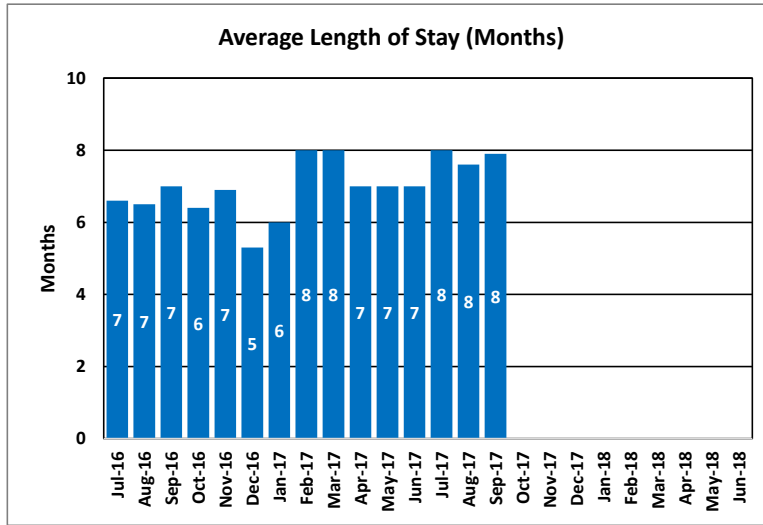
# Nevada Youth Training Center (NYTC)



## Nevada Youth Training Center (NYTC)

Nevada Youth Training Center is a juvenile justice facility and training school for males located in Elko. It is a staff secure medium/minimum security facility. The current bed capacity is 60 and staffing capacity is 85.

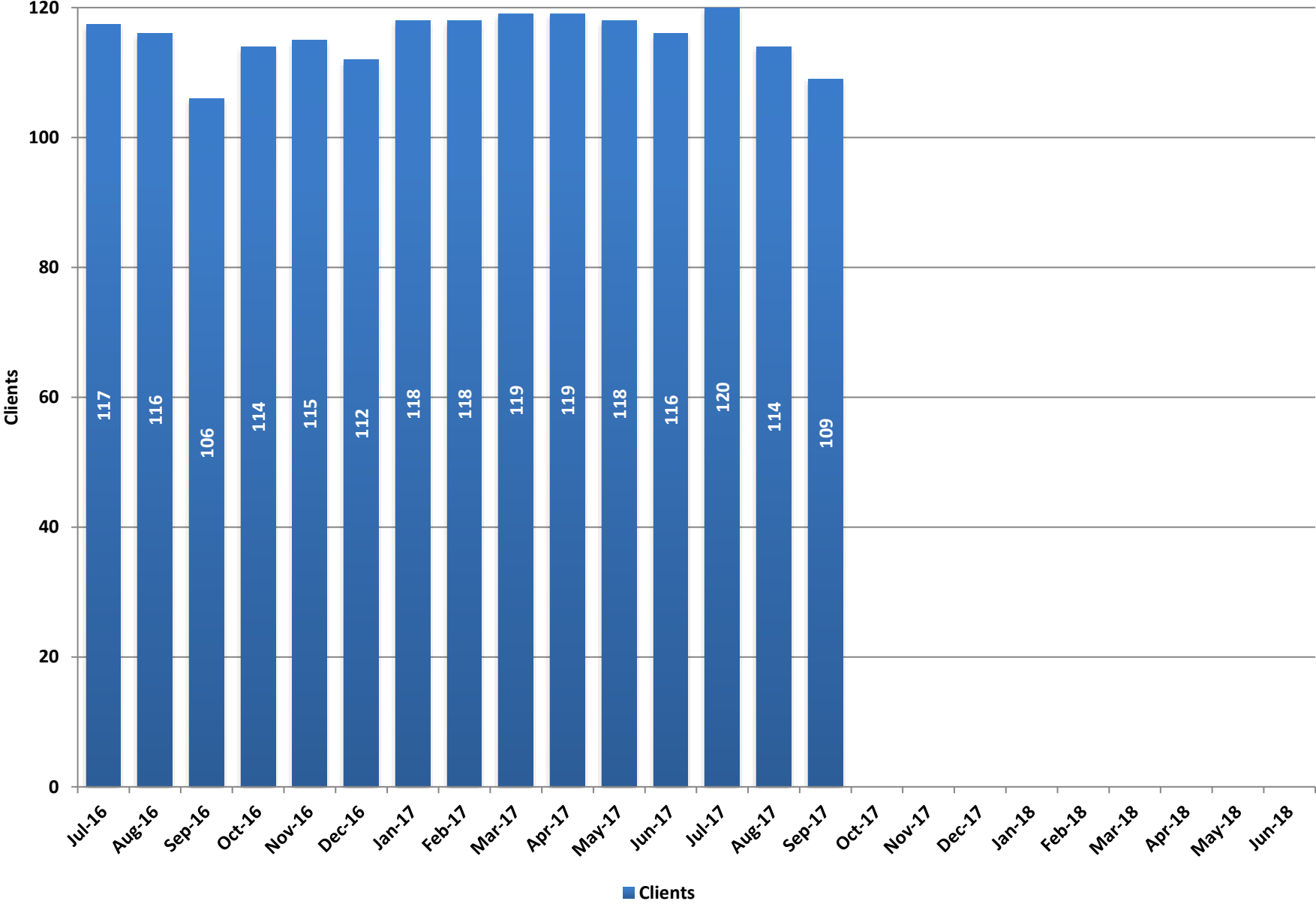
Month	Clients	Average Length of Stay (Months)
Jul-16	45	7
Aug-16	47	7
Sep-16	42	7
Oct-16	47	6
Nov-16	50	7
Dec-16	52	5
Jan-17	56	6
Feb-17	53	8
Mar-17	60	8
Apr-17	60	7
May-17	60	7
Jun-17	60	7
Jul-17	59	8
Aug-17	55	8
Sep-17	60	8
Oct-17		
Nov-17		
Dec-17		
Jan-18		
Feb-18		
Mar-18		
Apr-18		
May-18		
Jun-18		



### Fiscal Year Averages

Fiscal Year	Clients	Average Length of Stay (Months)
FY13	69	8
FY14	54	7
FY15	46	7
FY16	57	7
FY17	53	7
FY18 YTD	58	8

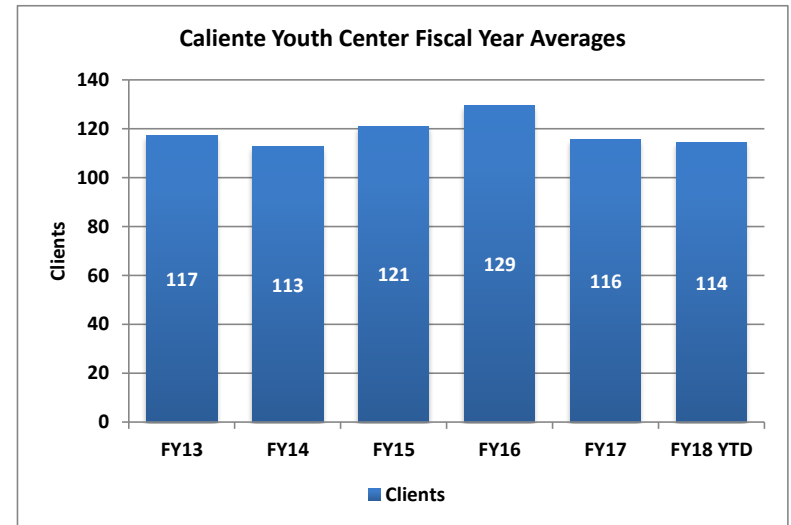
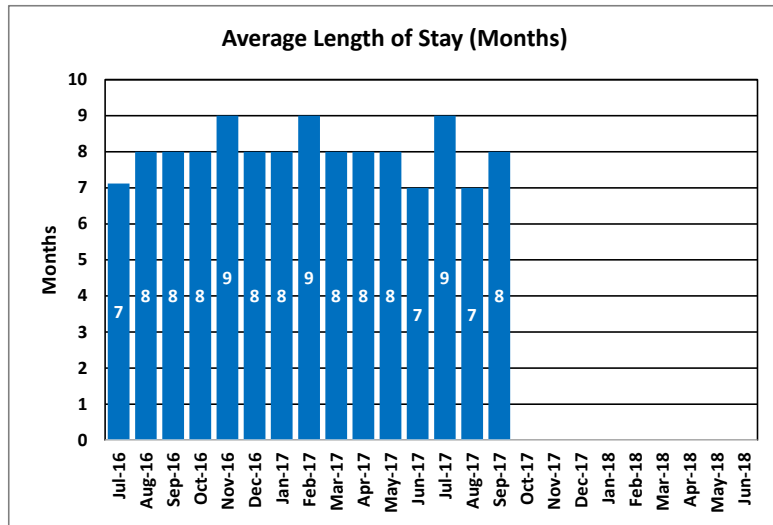
### Caliente Youth Center



## Caliente Youth Center

Caliente Youth Center is a juvenile justice facility and training school located in Caliente. It is a staff secure minimum security facility that serves both males and females. The current bed capacity is 140 and staffing capacity is 100.

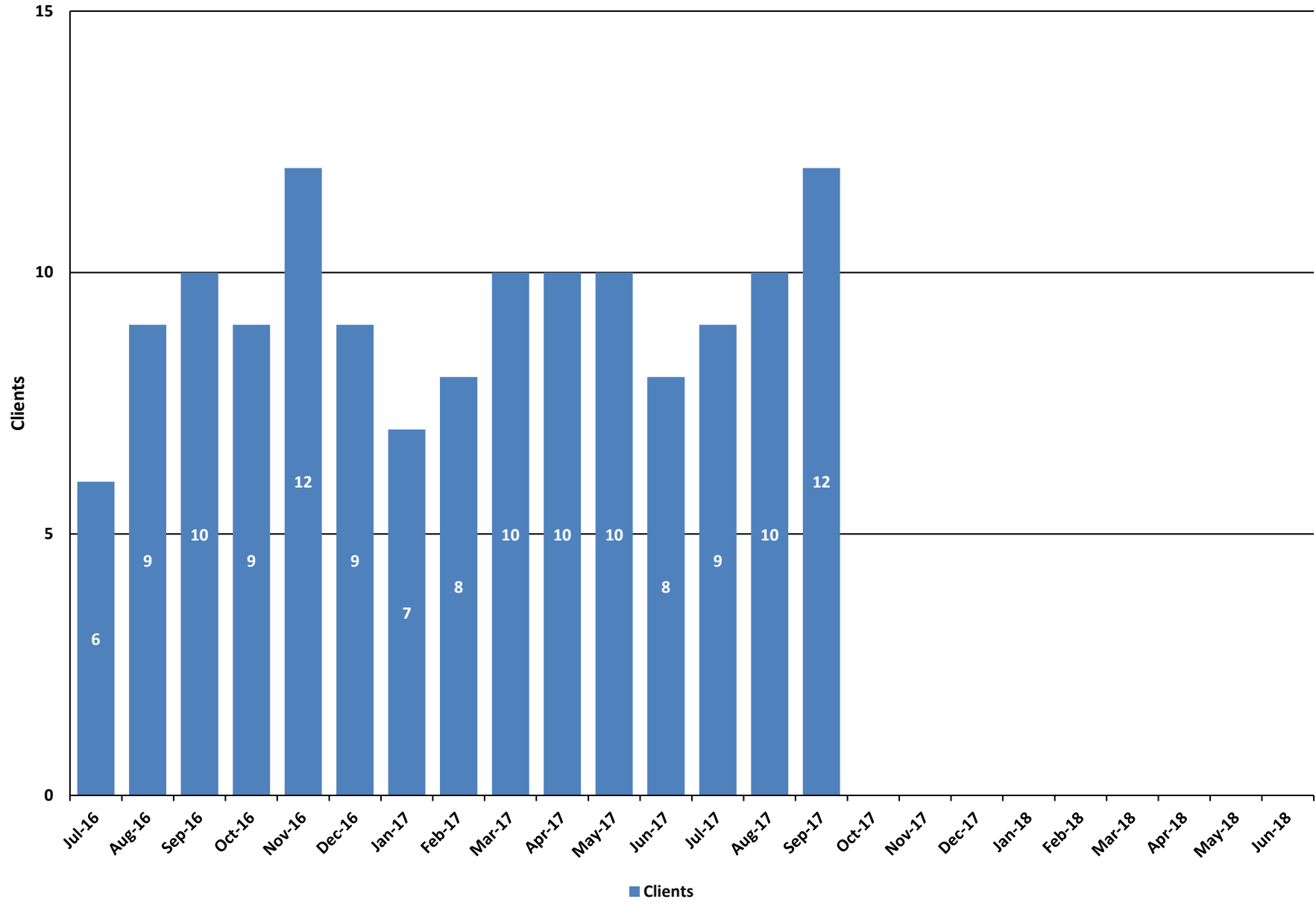
Month	Clients	Average Length of Stay (Months)
Jul-16	117	7
Aug-16	116	8
Sep-16	106	8
Oct-16	114	8
Nov-16	115	9
Dec-16	112	8
Jan-17	118	8
Feb-17	118	9
Mar-17	119	8
Apr-17	119	8
May-17	118	8
Jun-17	116	7
Jul-17	120	9
Aug-17	114	7
Sep-17	109	8
Oct-17		
Nov-17		
Dec-17		
Jan-18		
Feb-18		
Mar-18		
Apr-18		
May-18		
Jun-18		



### Fiscal Year Averages

Fiscal Year	Clients	Average Length of Stay (Months)
FY13	117	9
FY14	113	9
FY15	121	8
FY16	129	8
FY17	116	8
FY18 YTD	114	8

## Desert Willow Treatment Center Residential Services

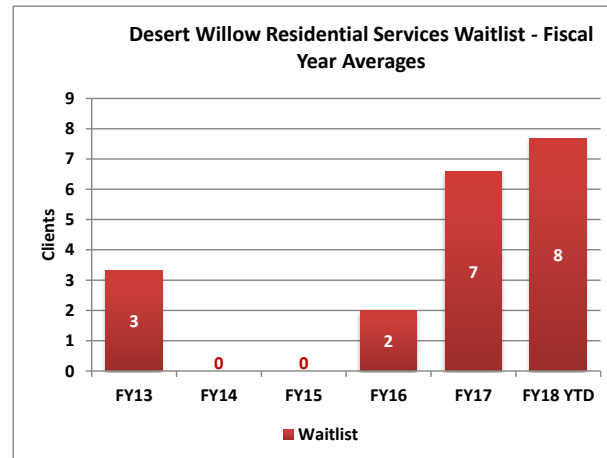
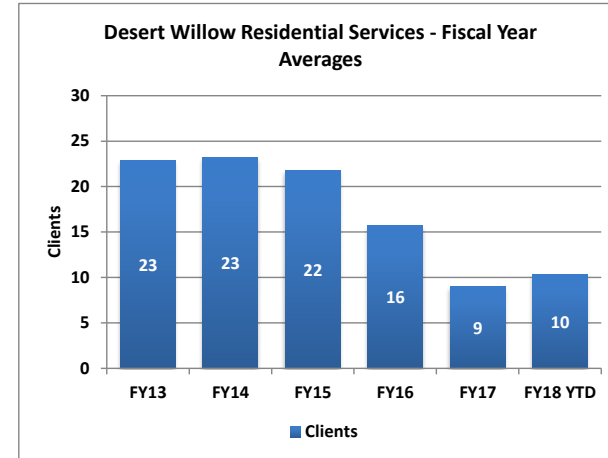
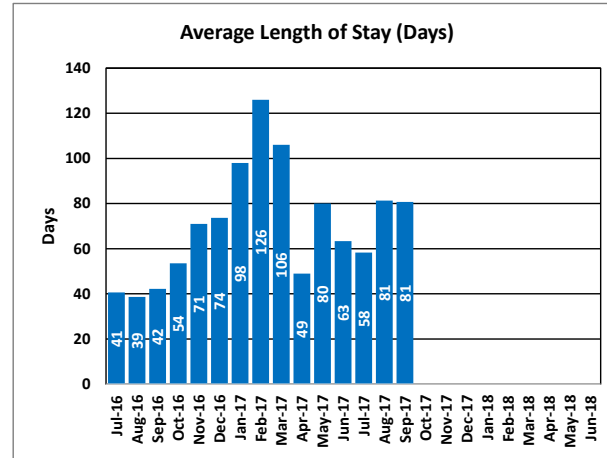




### Desert Willow Treatment Center Residential Services

Desert Willow has two residential units plus a specialized program for youths who are sexual offenders. These programs provide psychiatric care to the most severely emotionally disturbed youth representing the most restrictive service alternatives in the state. Many of the children served present risks to themselves and/or their community and have not been successful at lower levels of care. They require a secure treatment setting beyond acute care.

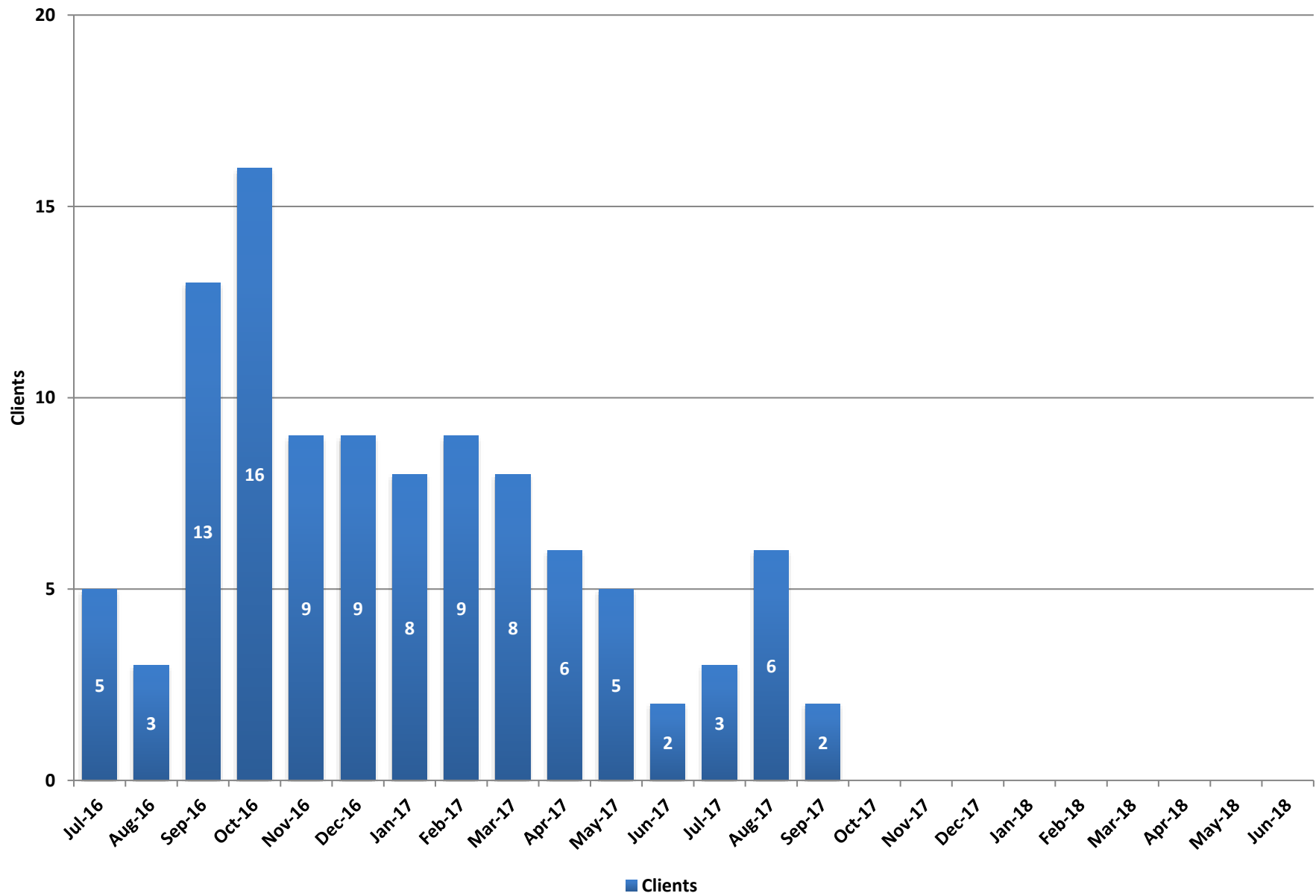
Month	Clients	Average Length of Stay (Days)	Waitlist
Jul-16	6	41	2
Aug-16	9	39	1
Sep-16	10	42	0
Oct-16	9	54	2
Nov-16	12	71	11
Dec-16	9	74	13
Jan-17	7	98	16
Feb-17	8	126	18
Mar-17	10	106	3
Apr-17	10	49	3
May-17	10	80	5
Jun-17	8	63	5
Jul-17	9	58	5
Aug-17	10	81	8
Sep-17	12	81	10
Oct-17			
Nov-17			
Dec-17			
Jan-18			
Feb-18			
Mar-18			
Apr-18			
May-18			
Jun-18			



**Fiscal Year Averages**

Fiscal Year	Clients	Average Length of Stay (Days)	Waitlist
FY13	23	81	3
FY14	23	81	0
FY15	22	90	0
FY16	16	109	2
FY17	9	70	7
FY18 YTD	10	73	8

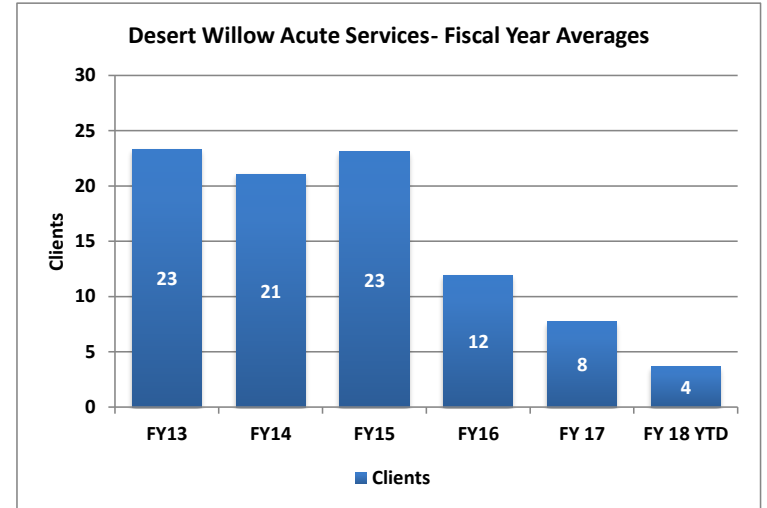
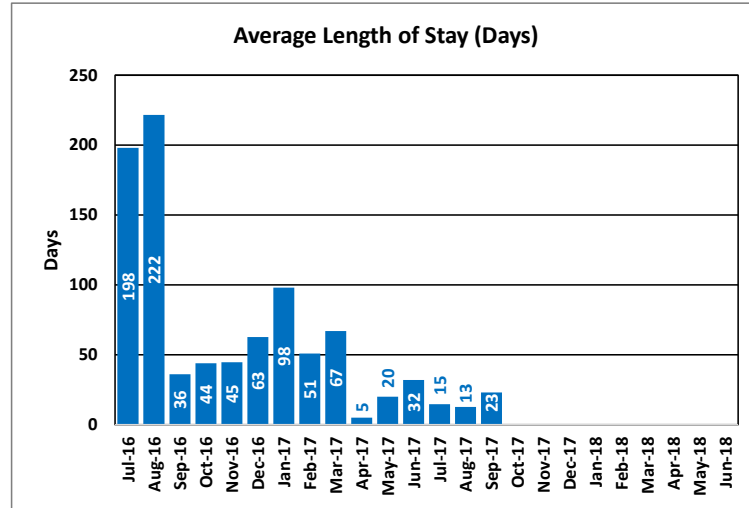
## Desert Willow Treatment Center Acute Services



### Desert Willow Treatment Center Acute Services

Desert Willow Treatment Center (DWTC) is a licensed 58 bed psychiatric inpatient facility providing acute mental health services in a secure environment to children and adolescents with severe emotional disturbances. Desert Willow Treatment Center is accredited by the Joint Commission on Accreditation of Health Care Organizations (JCAHO).

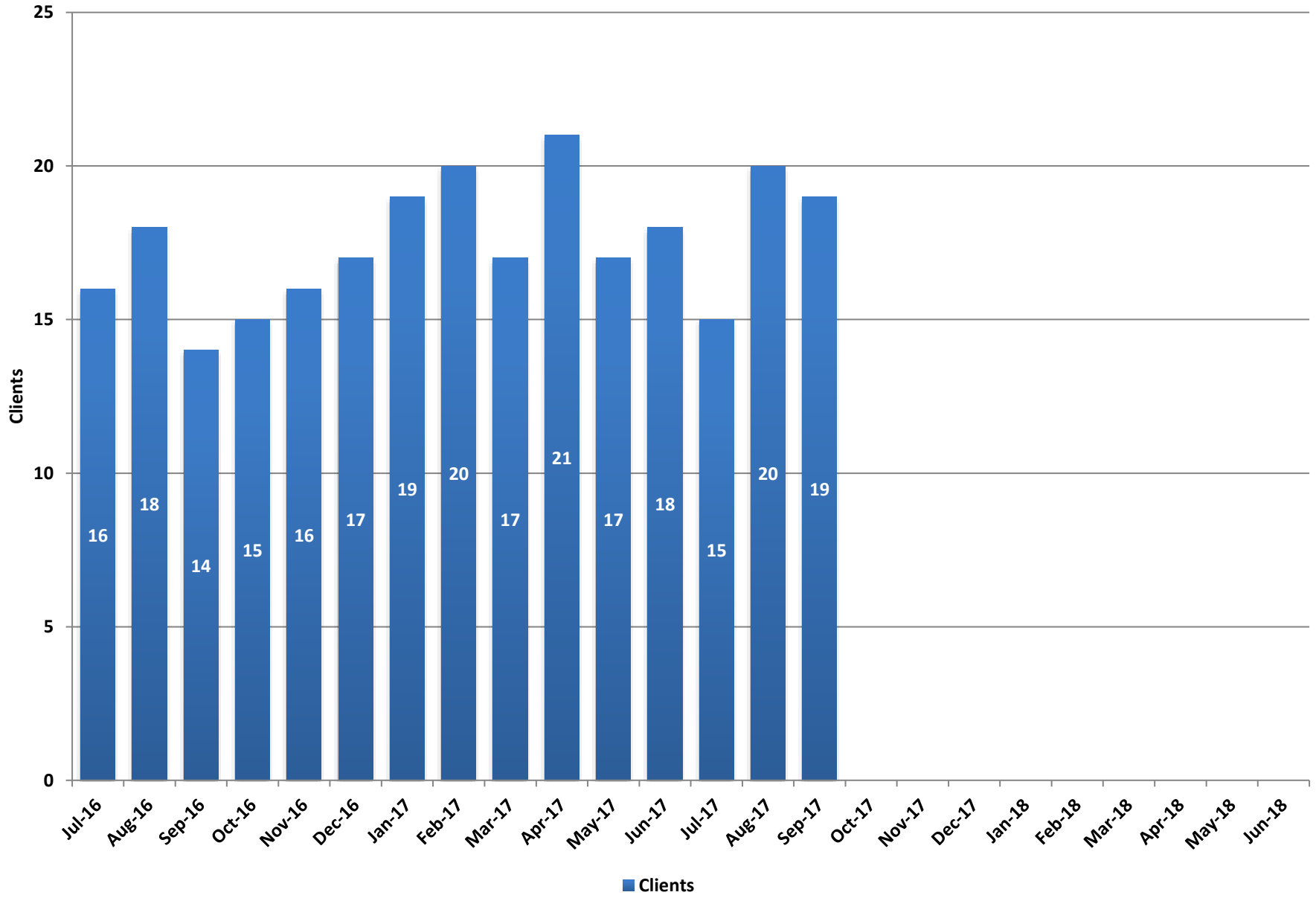
	Clients	Average Length of Stay (Days)
Jul-16	5	198
Aug-16	3	222
Sep-16	13	36
Oct-16	16	44
Nov-16	9	45
Dec-16	9	63
Jan-17	8	98
Feb-17	9	51
Mar-17	8	67
Apr-17	6	5
May-17	5	20
Jun-17	2	32
Jul-17	3	15
Aug-17	6	13
Sep-17	2	23
Oct-17		
Nov-17		
Dec-17		
Jan-18		
Feb-18		
Mar-18		
Apr-18		
May-18		
Jun-18		



#### Fiscal Year Averages

	Clients	Average Length of Stay (Days)
FY13	23	83
FY14	21	71
FY15	23	99
FY16	12	137
FY17	8	73
FY 18 YTD	4	17

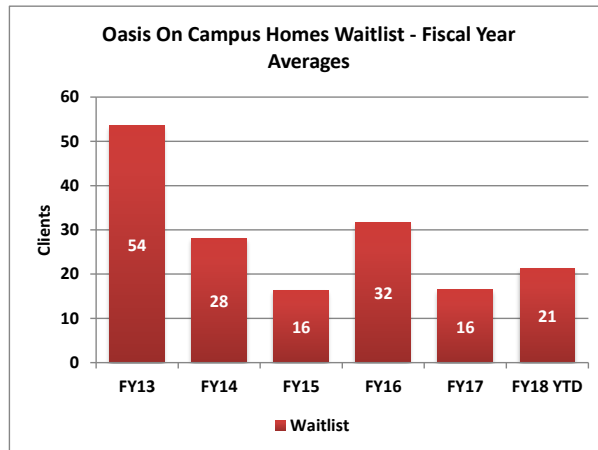
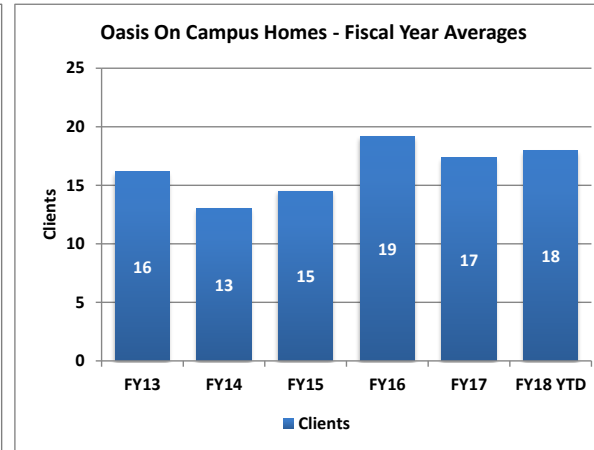
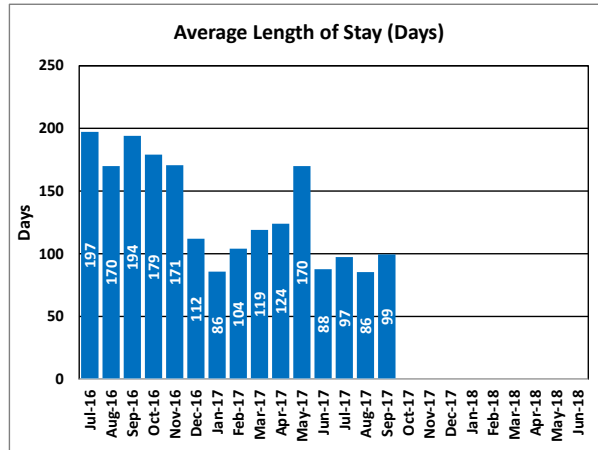
# Oasis On Campus Homes



### Oasis On Campus Homes

Oasis On Campus Treatment Homes provide mental health treatment home services in three homes with a total capacity of 17. Youth served are six through seventeen years. The goals of treatment are to increase youths' emotional and behavioral functioning and to successfully transition them to family homes/lower levels of care in the community.

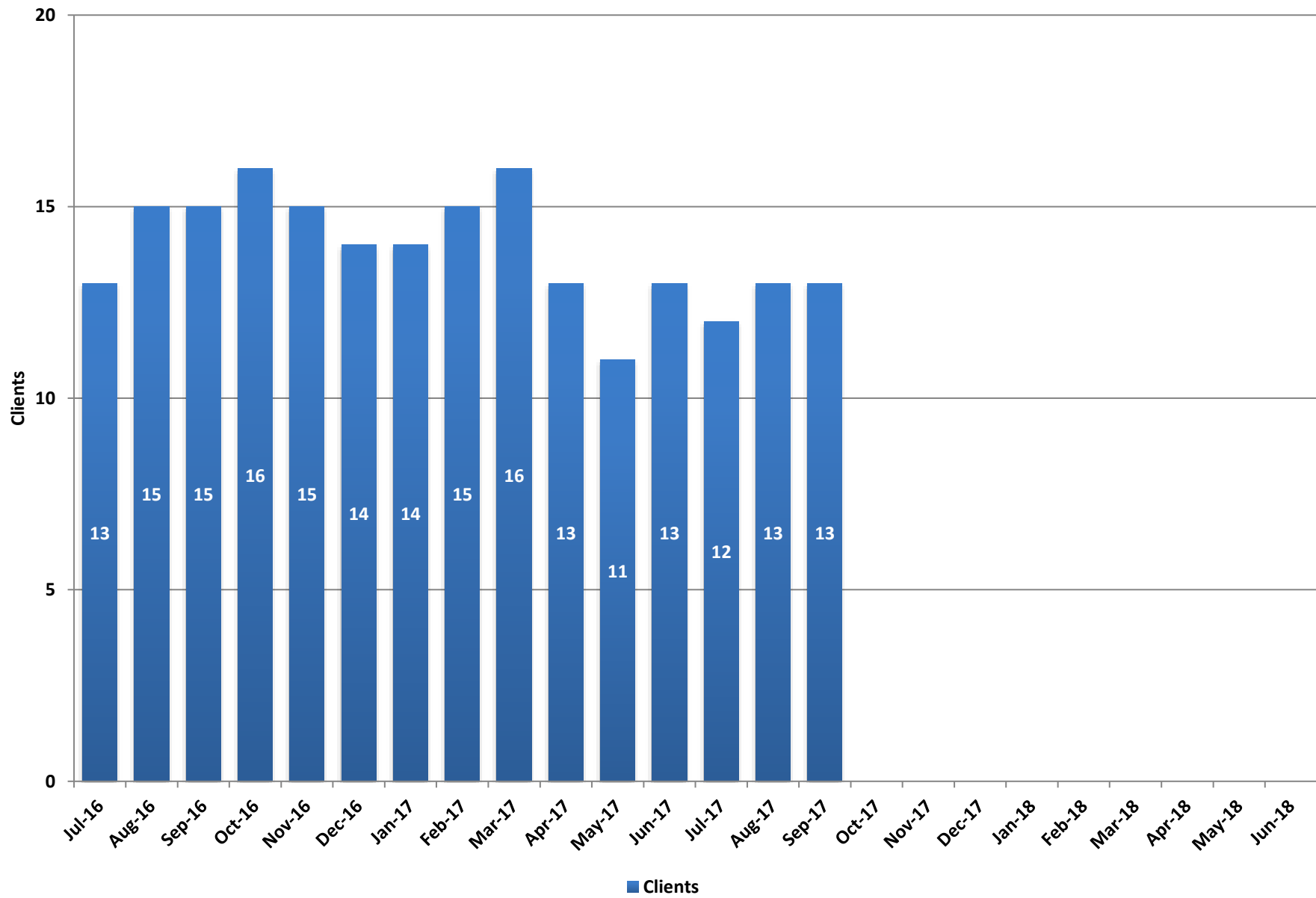
	Clients	Average Length of Stay (Days)	Waitlist
Jul-16	16	197	10
Aug-16	18	170	14
Sep-16	14	194	18
Oct-16	15	179	12
Nov-16	16	171	18
Dec-16	17	112	16
Jan-17	19	86	19
Feb-17	20	104	12
Mar-17	17	119	12
Apr-17	21	124	22
May-17	17	170	24
Jun-17	18	88	20
Jul-17	15	97	17
Aug-17	20	86	21
Sep-17	19	99	26
Oct-17			
Nov-17			
Dec-17			
Jan-18			
Feb-18			
Mar-18			
Apr-18			
May-18			
Jun-18			



**Fiscal Year Averages**

	Clients	Average Length of Stay (Days)	Waitlist
FY13	16	153	54
FY14	13	156	28
FY15	15	107	16
FY16	19	128	32
FY17	17	143	16
FY18 YTD	18	94	21

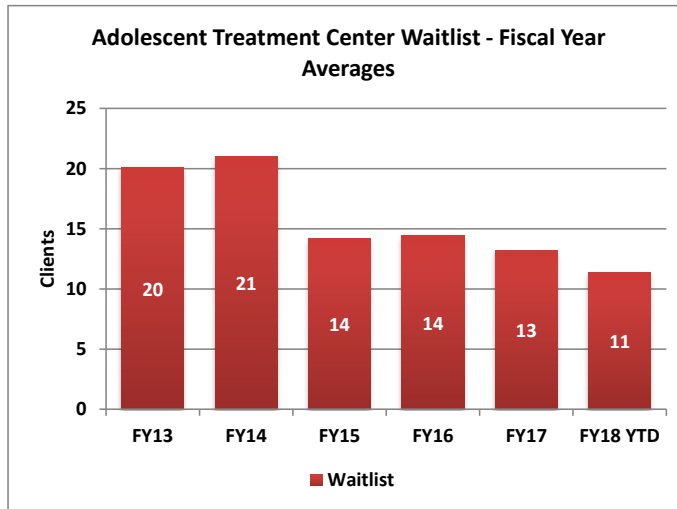
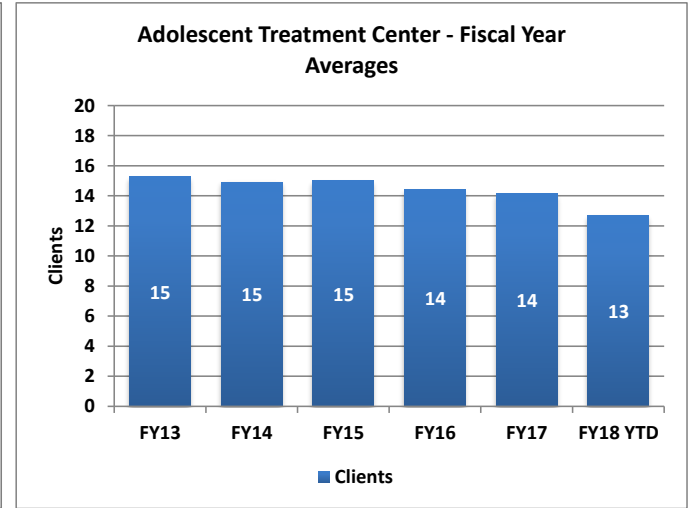
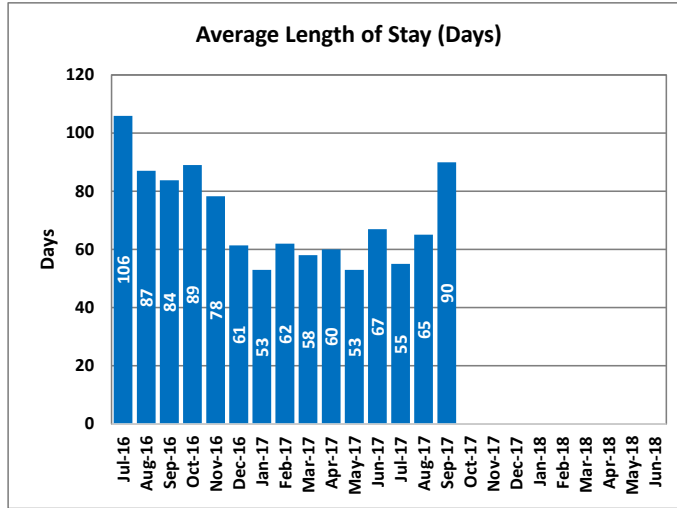
# Adolescent Treatment Center



## Adolescent Treatment Center

Adolescent Treatment Center in Northern Nevada serves severely emotionally disturbed clients who need more intensive and specialized treatment than that which can be provided within their family home or community placement. The Adolescent Treatment Center is a 16-bed residential program providing staff secure, 24-hour supervised treatment for the most severely emotionally disturbed and behaviorally disordered adolescents, 13-17 years of age.

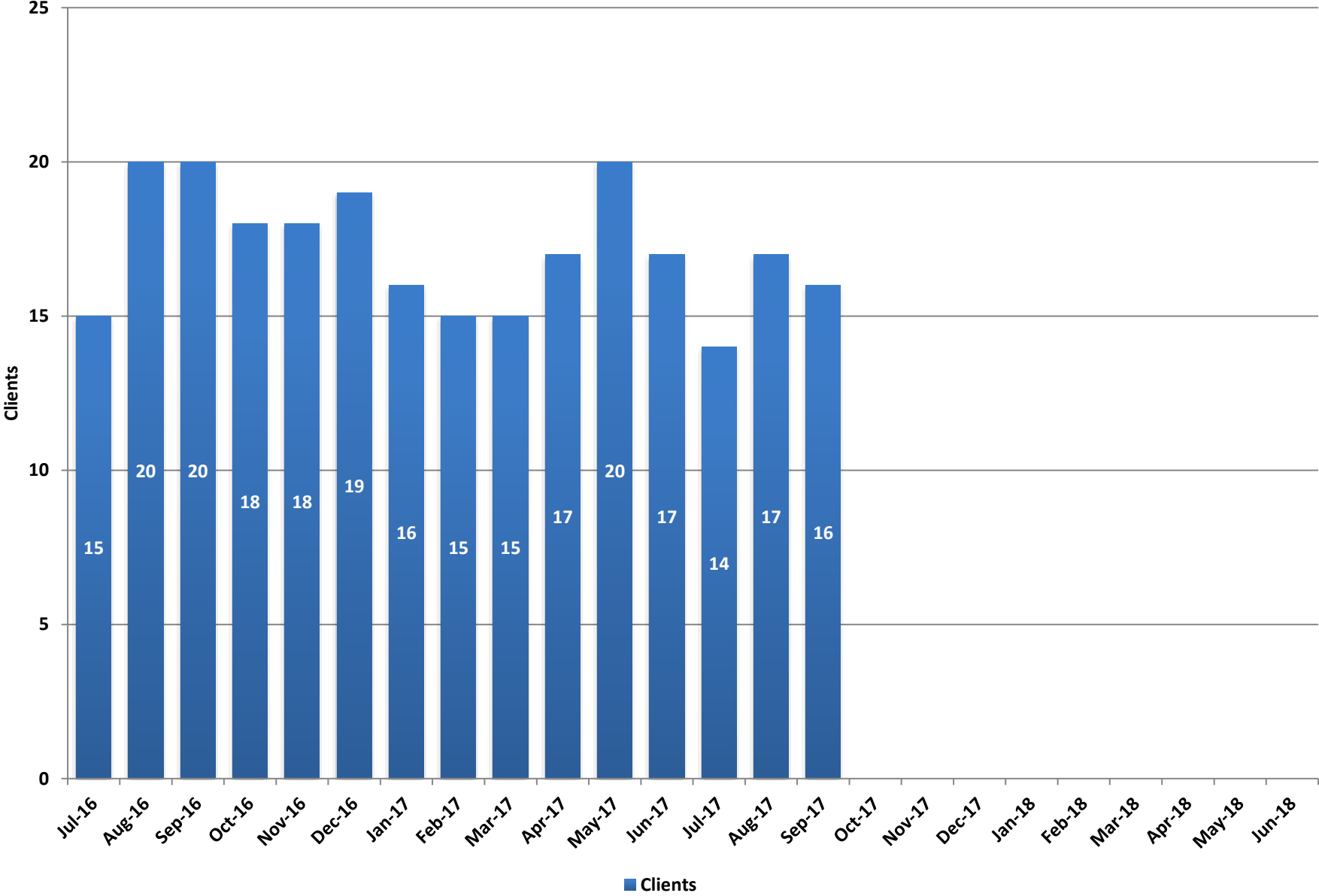
	Clients	Average Length of Stay (Days)	Waitlist
Jul-16	13	106	11
Aug-16	15	87	9
Sep-16	15	84	15
Oct-16	16	89	15
Nov-16	15	78	15
Dec-16	14	61	15
Jan-17	14	53	15
Feb-17	15	62	14
Mar-17	16	58	11
Apr-17	13	60	10
May-17	11	53	10
Jun-17	13	67	18
Jul-17	12	55	10
Aug-17	13	65	11
Sep-17	13	90	13
Oct-17			
Nov-17			
Dec-17			
Jan-18			
Feb-18			
Mar-18			
Apr-18			
May-18			
Jun-18			



### Fiscal Year Averages

	Clients	Average Length of Stay (Days)	Waitlist
FY13	15	70	20
FY14	15	87	21
FY15	15	93	14
FY16	14	93	14
FY17	14	72	13
FY18 YTD	13	70	11

# Family Learning Homes

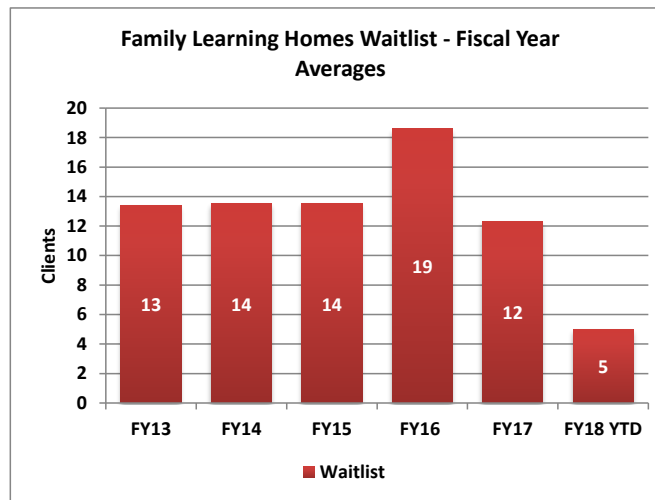
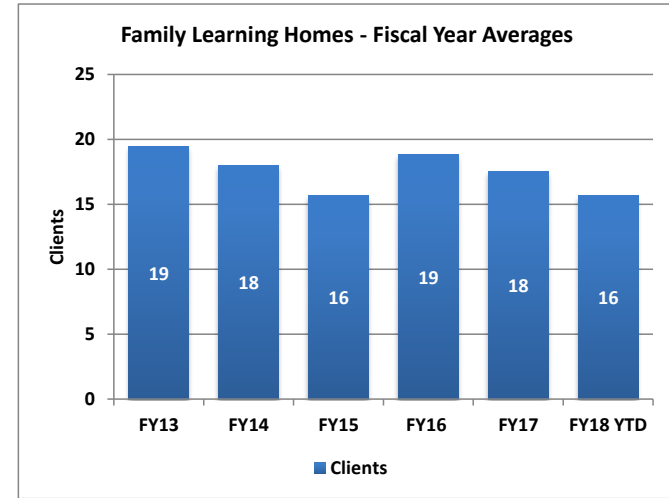
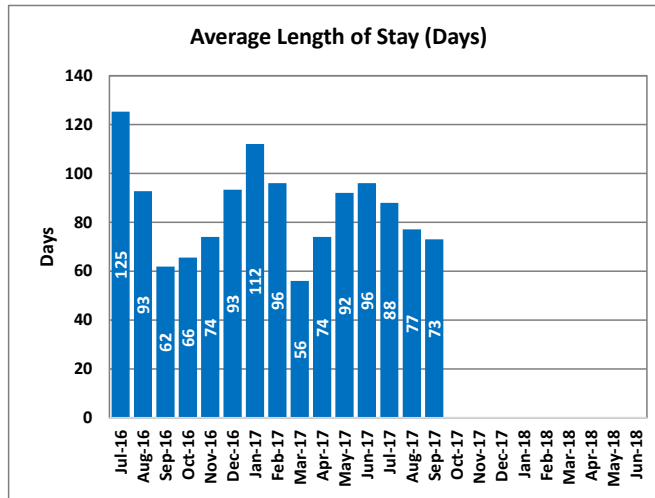




## Family Learning Homes

The four Family Learning Homes in Northern Nevada provide a behavioral health treatment home with programming designed to meet the specific behavioral and emotional needs of children and adolescents ages 6 through 17. The goals of treatment are to increase youths' emotional and behavioral functioning and to successfully transition them to family homes/lower levels of care in the community. The current bed capacity is 5 per home (20 total).

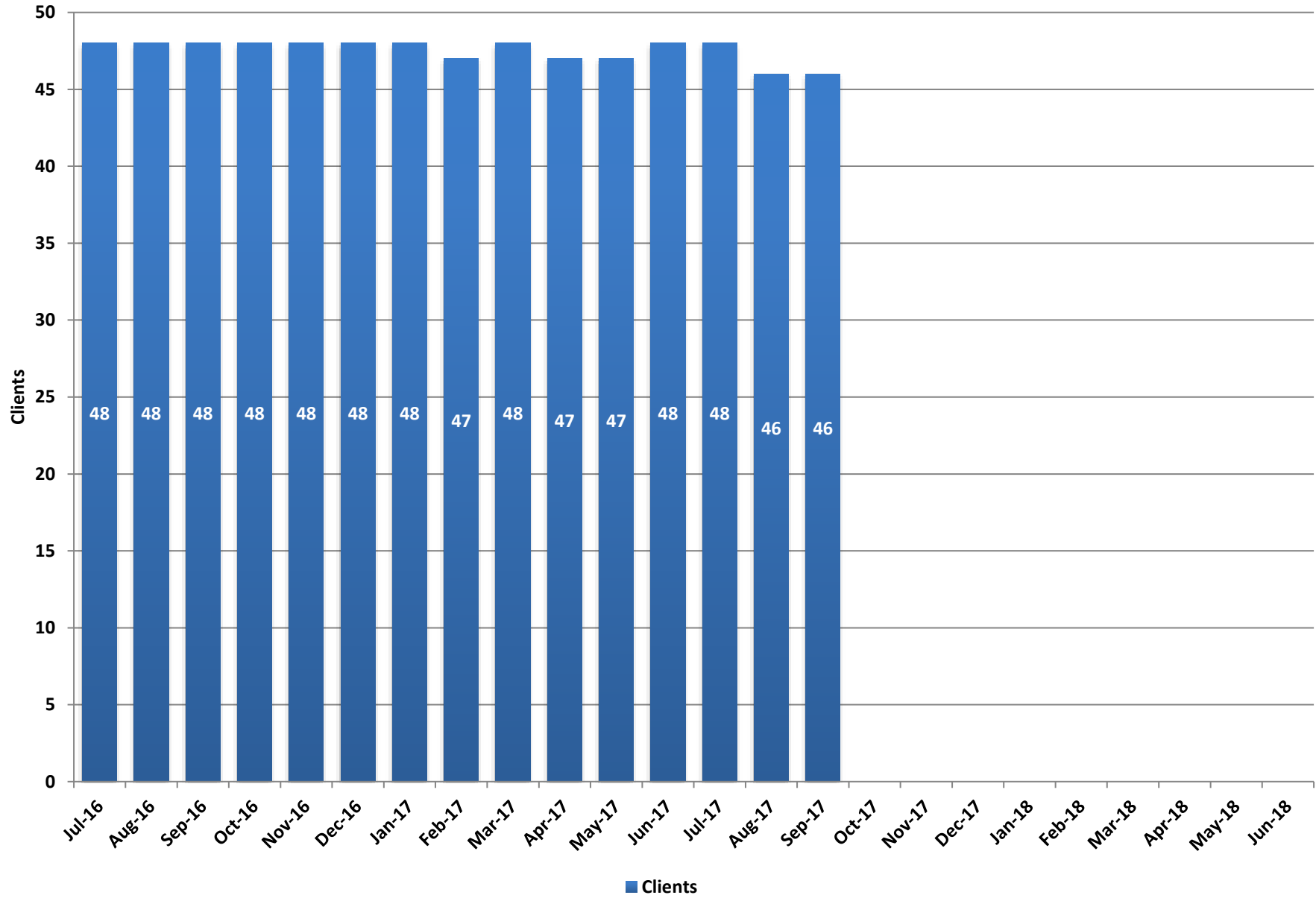
	Clients	Average Length of Stay (Days)	Waitlist
Jul-16	15	125	18
Aug-16	20	93	13
Sep-16	20	62	11
Oct-16	18	66	12
Nov-16	18	74	14
Dec-16	19	93	17
Jan-17	16	112	17
Feb-17	15	96	12
Mar-17	15	56	10
Apr-17	17	74	6
May-17	20	92	9
Jun-17	17	96	9
Jul-17	14	88	8
Aug-17	17	77	4
Sep-17	16	73	3
Oct-17			
Nov-17			
Dec-17			
Jan-18			
Feb-18			
Mar-18			
Apr-18			
May-18			
Jun-18			



### Fiscal Year Averages

	Clients	Average Length of Stay (Days)	Waitlist
FY13	19	82	13
FY14	18	95	14
FY15	16	87	14
FY16	19	103	19
FY17	18	87	12
FY18 YTD	16	79	5

## Intermediate Care Facility for Intellectual and Developmental Disabilities



## Intermediate Care Facility for Intellectual and Developmental Disabilities (ICF/IDD)

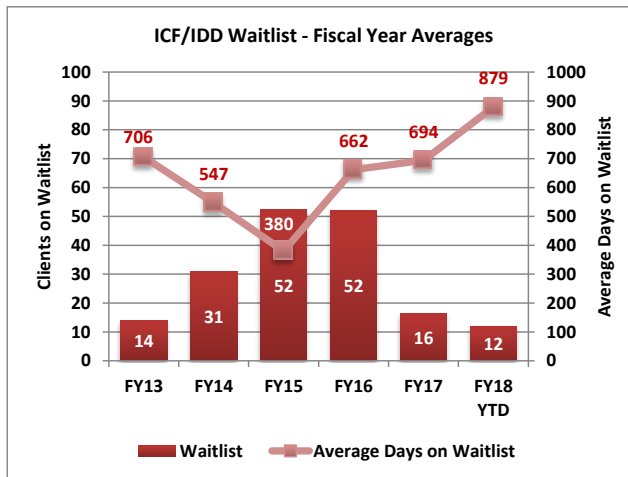
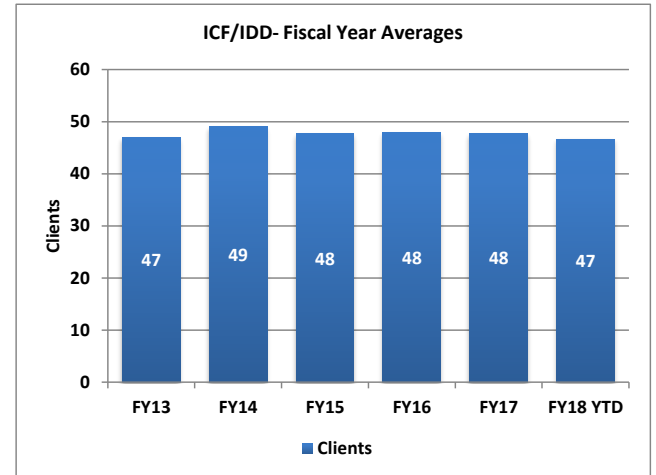
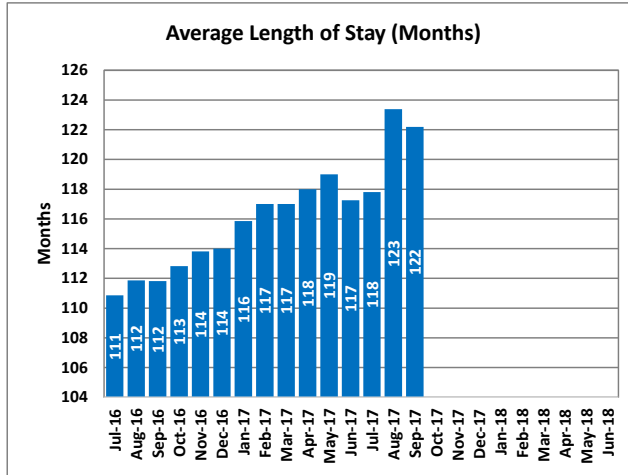
Desert Regional Center ICF/IDD is a residential facility for adults with intellectual disabilities and related conditions located in Las Vegas. The ICF/IDD campus homes provide services, habilitation, and support to people with intensive needs who are unable to reside in community settings. The facility provides behavioral assessment and intervention, recreational therapy, dietary consultation, and 24 hour nursing support to residents. The current capacity is 48.

	Clients	Average Length of Stay (Months)	Waitlist	Average Days on Waitlist
Jul-16	48	111	18	555
Aug-16	48	112	18	586
Sep-16	48	112	19	629
Oct-16	48	113	19	661
Nov-16	48	114	19	690
Dec-16	48	114	19	721
Jan-17	48	116	15	685
Feb-17	47	117	15	713
Mar-17	48	117	15	744
Apr-17	47	118	14	745
May-17	47	119	12	787
Jun-17	48	117	12	817
Jul-17	48	118	12	848
Aug-17	46	123	12	879
Sep-17	46	122	12	909
Oct-17				
Nov-17				
Dec-17				
Jan-18				
Feb-18				
Mar-18				
Apr-18				
May-18				
Jun-18				

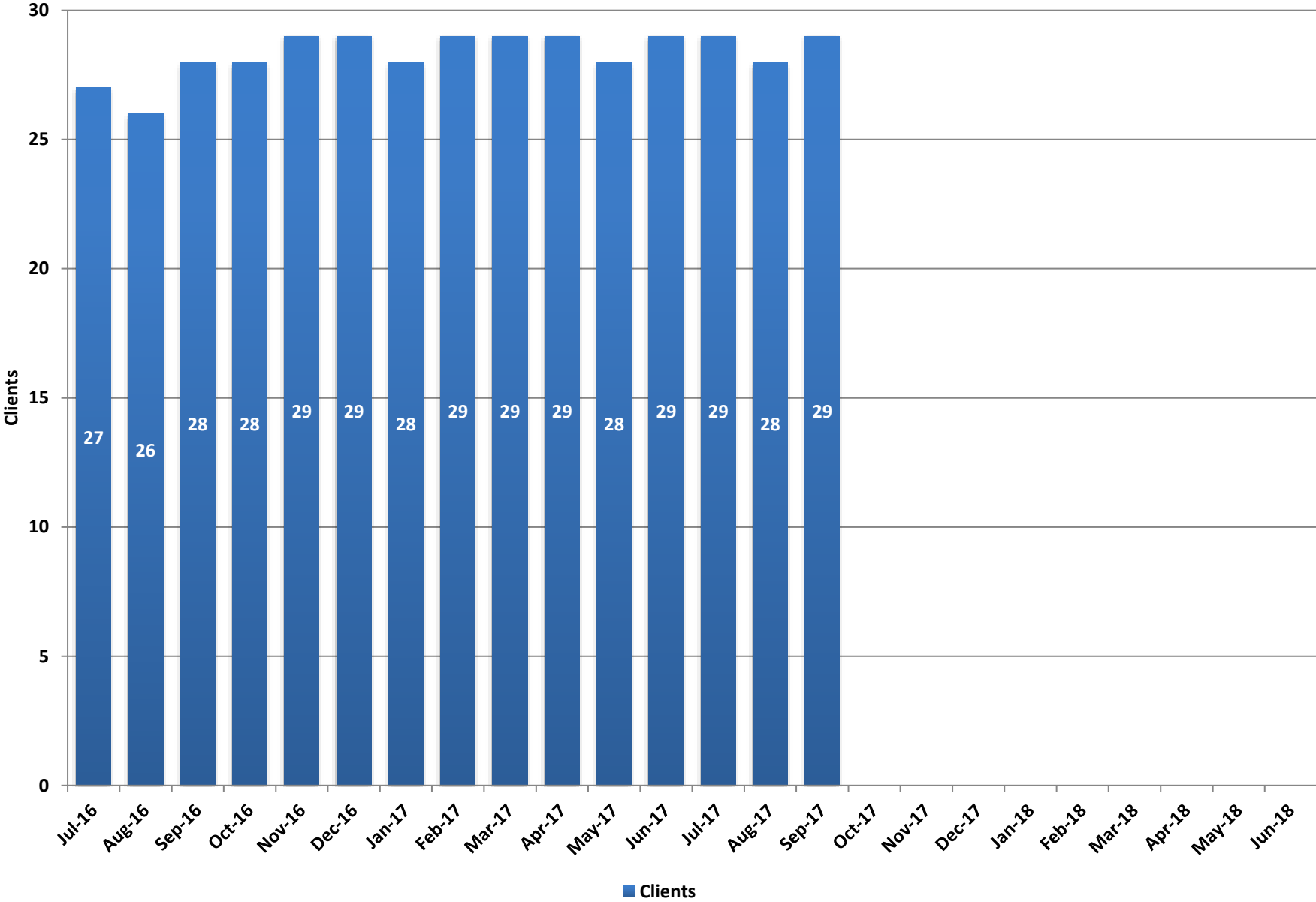
\*Data not reported

### Fiscal Year Averages

	Clients	Average Length of Stay (Months)	Waitlist	Average Days on Waitlist
FY13	47		14	706
FY14	49		31	547
FY15	48		52	380
FY16	48	113	52	662
FY17	48	115	16	694
FY18 YTD	47	121	12	879



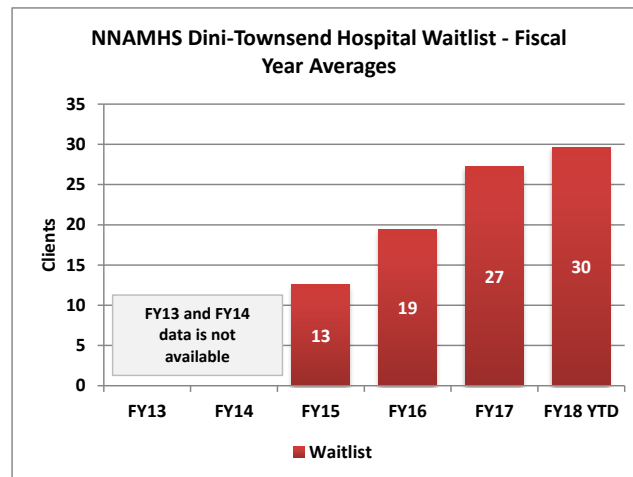
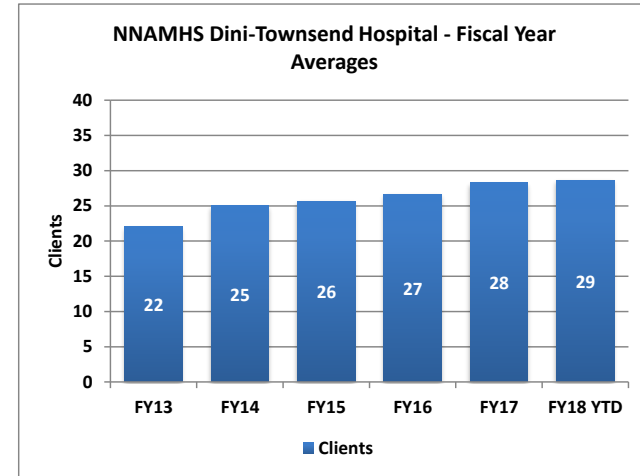
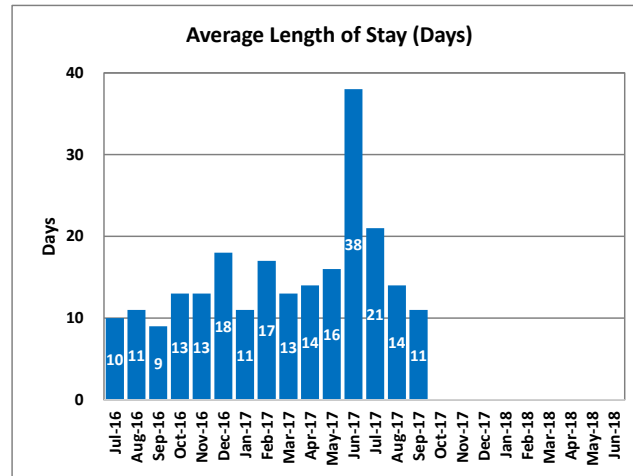
# NNAMHS Dini-Townsend Hospital



### NNAMHS Dini-Townsend Hospital

Dini-Townsend Hospital, on the campus of Northern Nevada Adult Mental Health Services, is located in Sparks, Nevada. Our mission is to provide psychiatric treatment and rehabilitation services in the least restrictive setting to support personal recovery and enhance quality of life. The hospital primarily serves those individuals that have limited access to community resources. The hospital is licensed for 50 beds but is staffed for 30 beds. We have a rapid stabilization unit of 10 beds and a unit of 20 beds for those individuals needing longer term care. Our services also include a high emphasis on discharge planning in order to assist the consumer with returning to the community as quickly as possible and within a safe environment.

	Clients	Average Length of Stay (Days)	Waitlist
Jul-16	27	10	20
Aug-16	26	11	23
Sep-16	28	9	26
Oct-16	28	13	35
Nov-16	29	13	20
Dec-16	29	18	27
Jan-17	28	11	29
Feb-17	29	17	32
Mar-17	29	13	29
Apr-17	29	14	29
May-17	28	16	28
Jun-17	29	38	29
Jul-17	29	21	29
Aug-17	28	14	30
Sep-17	29	11	30
Oct-17			
Nov-17			
Dec-17			
Jan-18			
Feb-18			
Mar-18			
Apr-18			
May-18			
Jun-18			

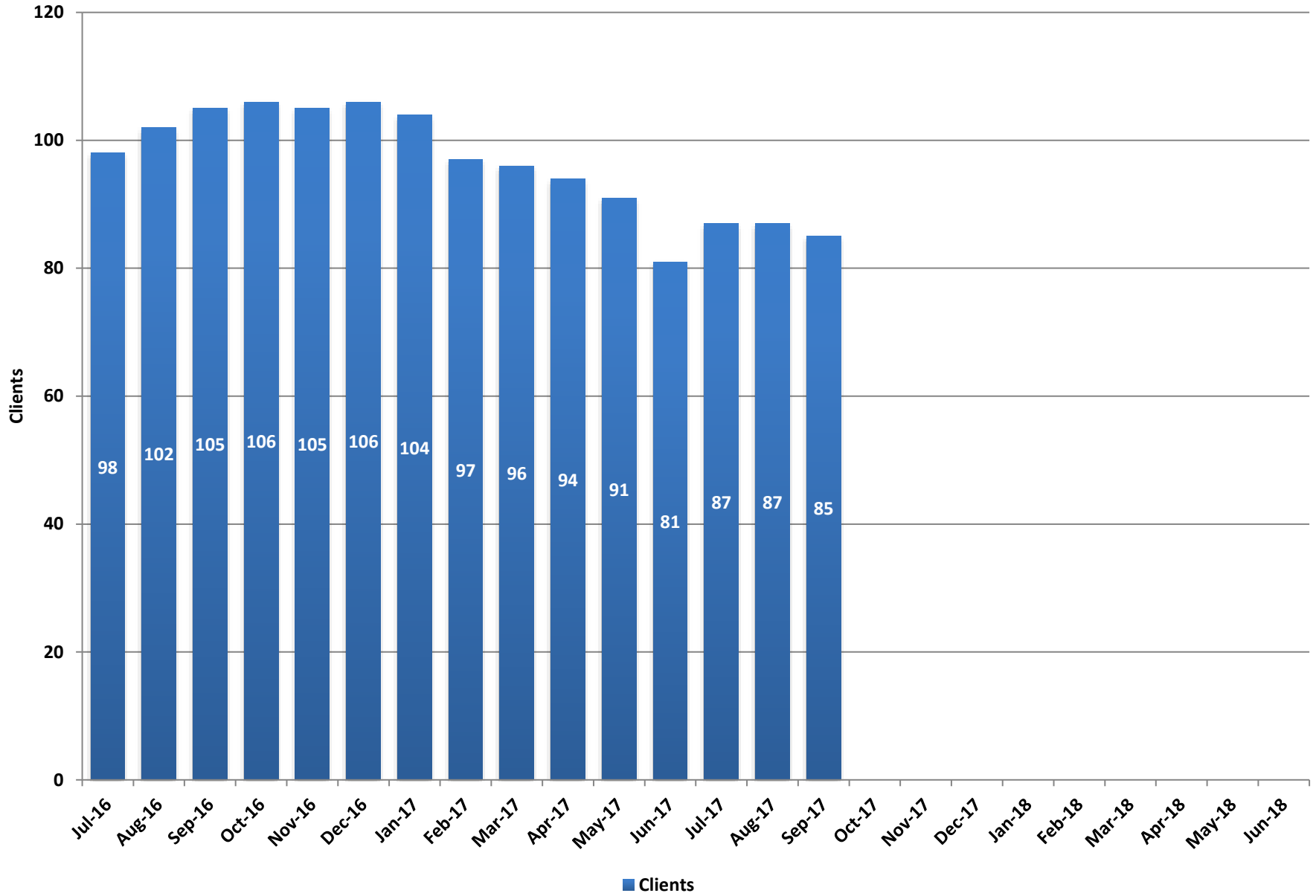


Note: Waitlist was not measured prior to December 2014.

#### Fiscal Year Averages

	Clients	Average Length of Stay (Days)	Waitlist
FY13	22	10	
FY14	25	6	
FY15	26	7	13
FY16	27	12	19
FY17	28	15	27
FY18 YTD	29	15	30

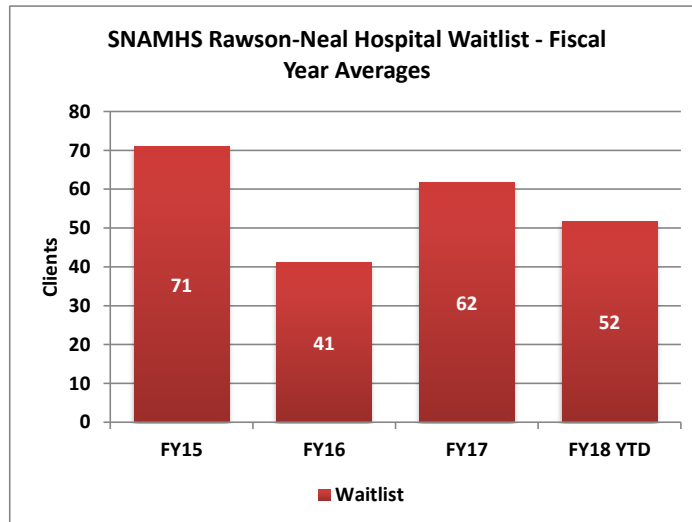
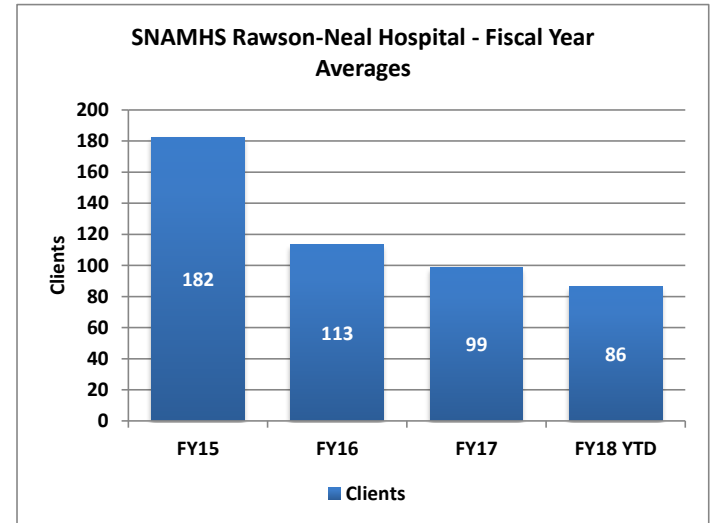
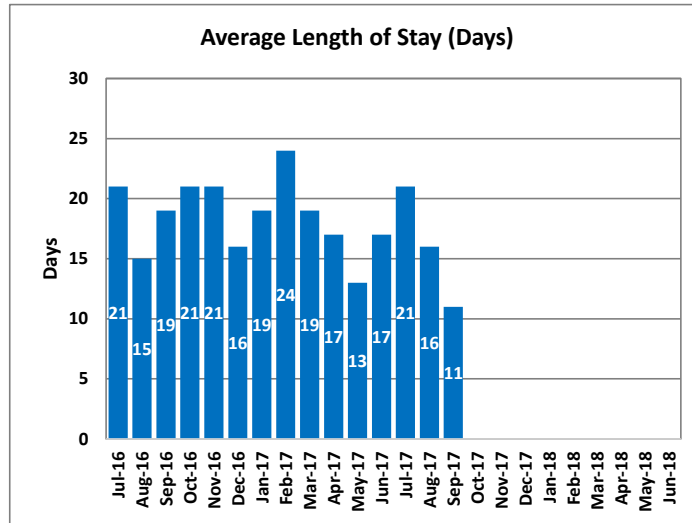
# SNAMHS Rawson-Neal Hospital



## SNAMHS Rawson-Neal Hospital

Southern Nevada Adult Mental Health Services is a licensed 274 bed facility that provides psychiatric services to individuals with mental illness. The campus houses both civil and forensic units, where behavioral assessments, evaluation and treatment are provided by psychiatrists, psychologists and other support services by our trained nursing and social services staff. SNAMHS (Rawson-Neal Hospital) civil bed capacity is 160.

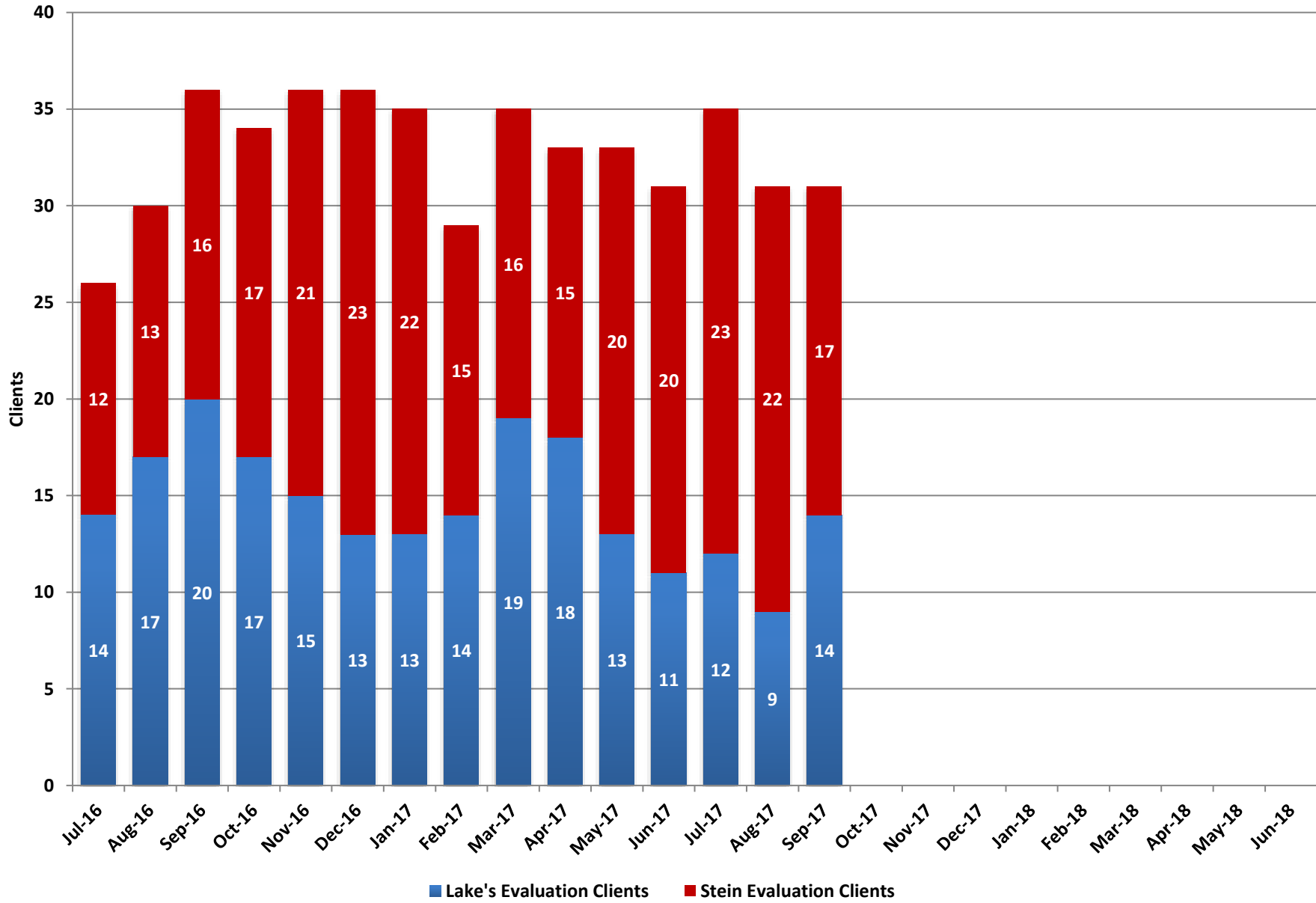
	Clients	Average Length of Stay (Days)	Waitlist
Jul-16	98	21	59
Aug-16	102	15	55
Sep-16	105	19	56
Oct-16	106	21	56
Nov-16	105	21	61
Dec-16	106	16	61
Jan-17	104	19	73
Feb-17	97	24	65
Mar-17	96	19	55
Apr-17	94	17	61
May-17	91	13	60
Jun-17	81	17	79
Jul-17	87	21	60
Aug-17	87	16	57
Sep-17	85	11	38
Oct-17			
Nov-17			
Dec-17			
Jan-18			
Feb-18			
Mar-18			
Apr-18			
May-18			
Jun-18			



### Fiscal Year Averages

	Clients	Average Length of Stay (Days)	Waitlist
FY15	182	18	71
FY16	113	17	41
FY17	99	19	62
FY18 YTD	86	16	52

# Adult Forensic Evaluation Clients

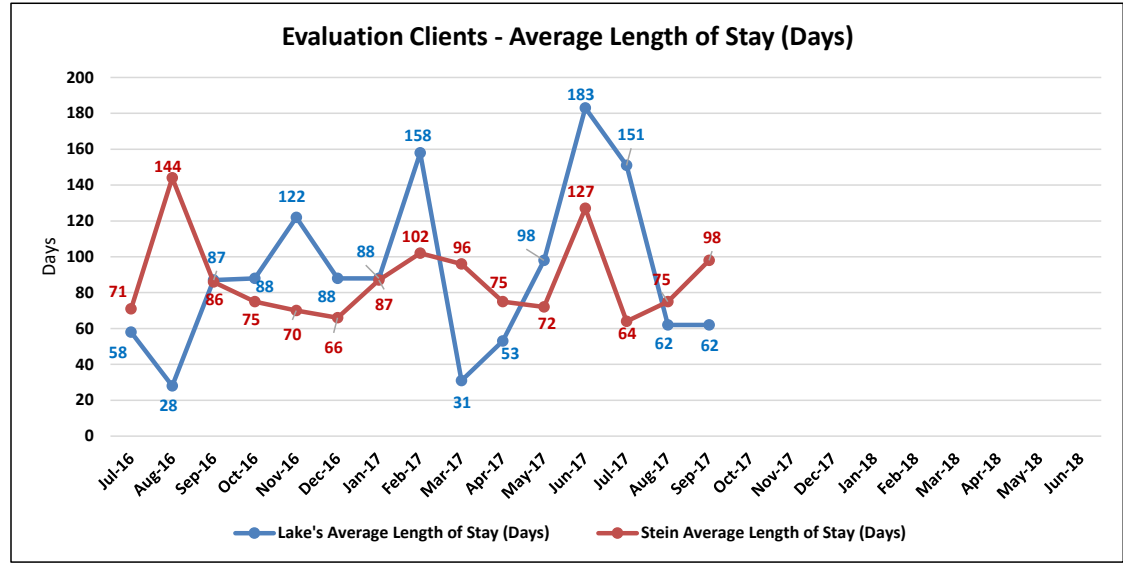




### Adult Forensic Facilities - Evaluation Clients

Lake's Crossing Center is a forensic behavioral health facility located in Sparks. The program provides treatment for severe mental illness and other disabling conditions that interfere with a person's ability to proceed with their adjudication or return to the community after having been found not guilty by reason of insanity/incompetent without probability of attaining competence. The facility has a bed capacity of 86. SNAMHS secure forensic units (Stein Hospital and C-Pod) provide competency evaluations to adults who are court committed. The bed capacity is 68.

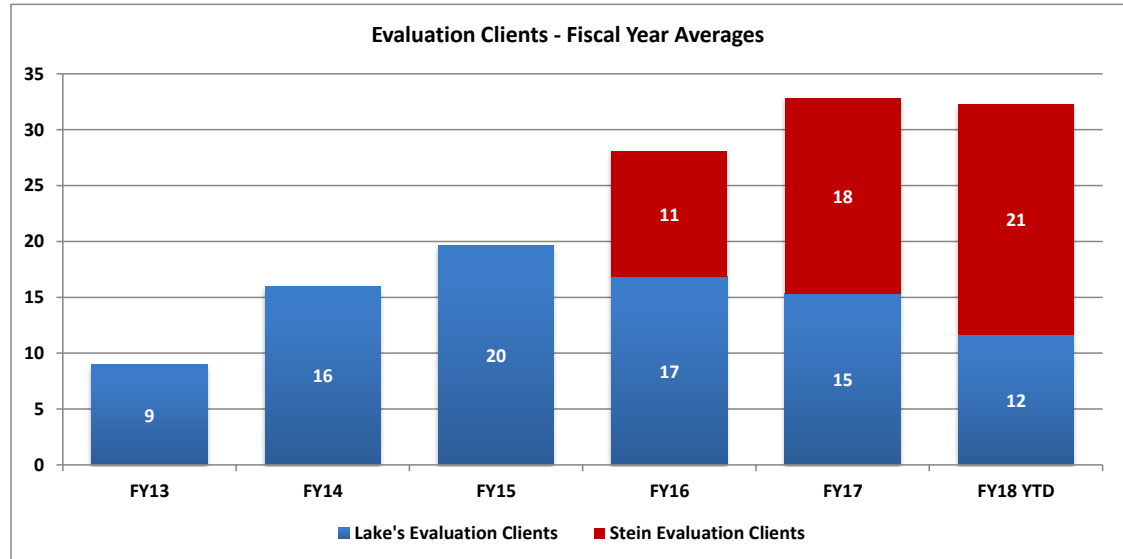
	Lake's Evaluation Clients	Lake's Average Length of Stay (Days)	Stein Evaluation Clients	Stein Average Length of Stay (Days)
Jul-16	14	58	12	71
Aug-16	17	28	13	144
Sep-16	20	87	16	86
Oct-16	17	88	17	75
Nov-16	15	122	21	70
Dec-16	13	88	23	66
Jan-17	13	88	22	87
Feb-17	14	158	15	102
Mar-17	19	31	16	96
Apr-17	18	53	15	75
May-17	13	98	20	72
Jun-17	11	183	20	127
Jul-17	12	151	23	64
Aug-17	9	62	22	75
Sep-17	14	62	17	98
Oct-17				
Nov-17				
Dec-17				
Jan-18				
Feb-18				
Mar-18				
Apr-18				
May-18				
Jun-18				



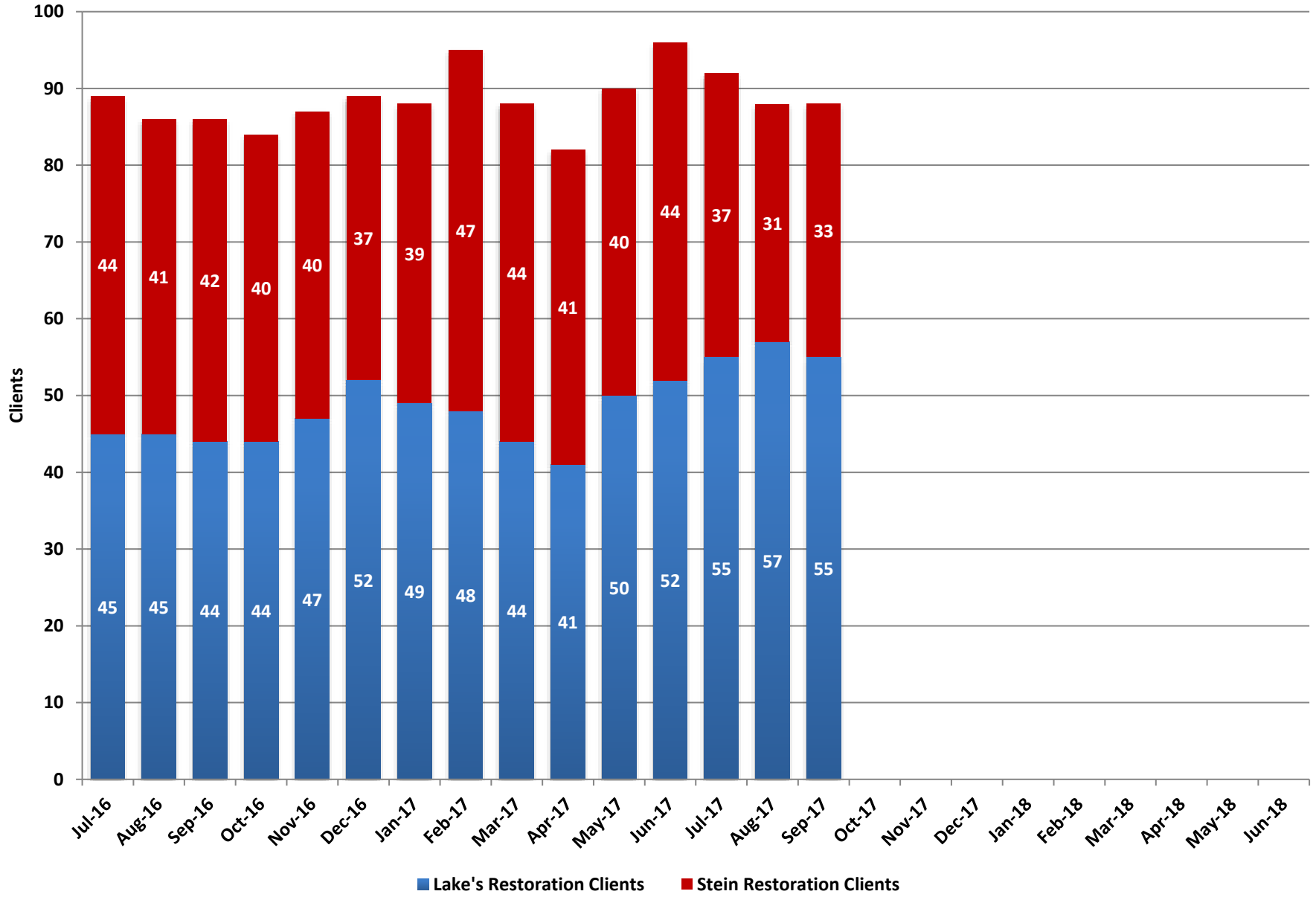
#### Fiscal Year Averages

	Lake's Evaluation Clients	Lake's Average Length of Stay (Days)	Stein Evaluation Clients	Stein Average Length of Stay (Days)
FY13	9	98		
FY14	16	61		
FY15	20	94		
FY16	17	84	11	88
FY17	15	90	18	89
FY18 YTD	12	92	21	79

Note: Missing data will be filled in as the data becomes available.



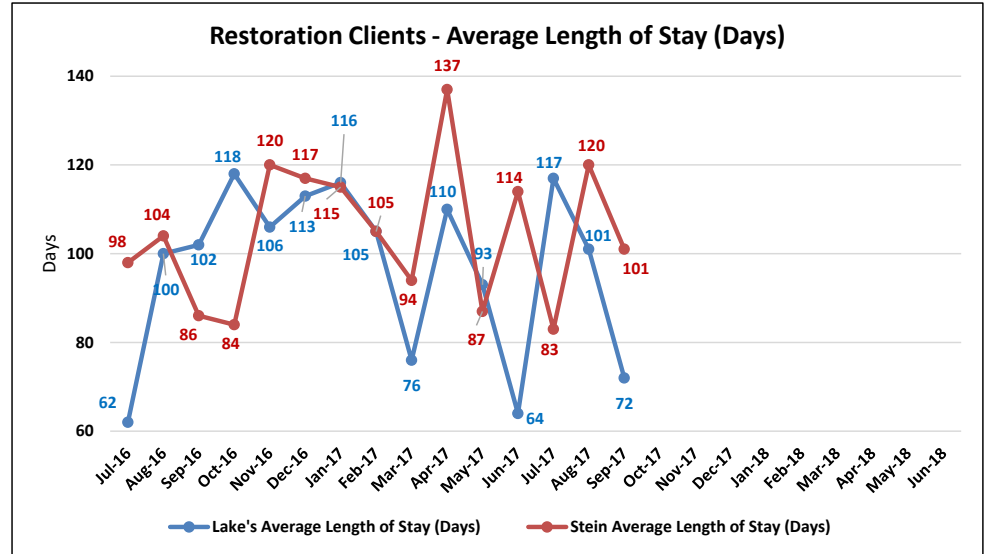
# Adult Forensic Restoration Clients



### Adult Forensic Facilities - Restoration Clients

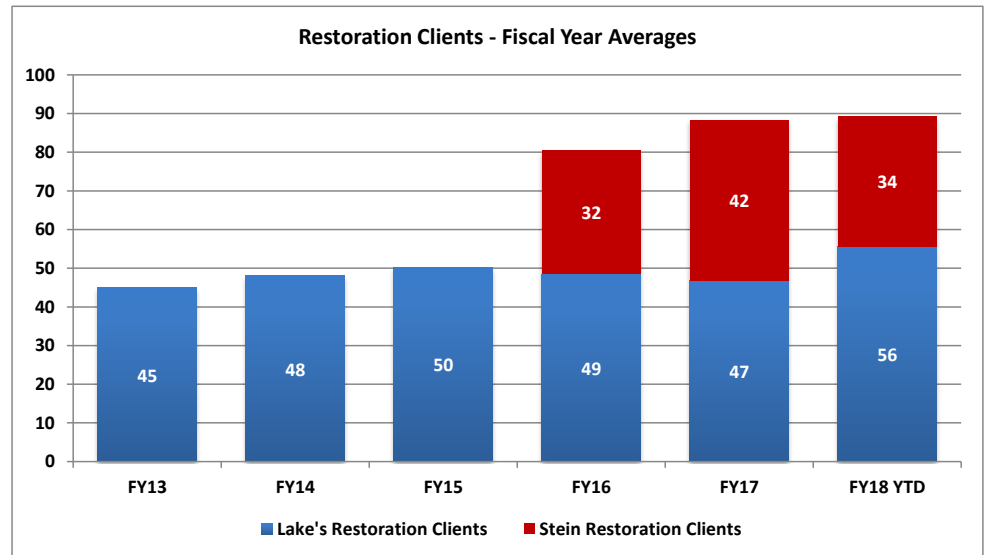
Lake's Crossing Center is a forensic behavioral health facility located in Sparks. The program provides treatment for severe mental illness and other disabling conditions that interfere with a person's ability to proceed with their adjudication or return to the community after having been found not guilty by reason of insanity/incompetent without probability of attaining competence. The facility has a bed capacity of 86. SNAMHS secure forensic units (Stein Hospital and C-Pod) provide competency evaluations to adults who are court committed. The bed capacity is 68.

	Lake's Restoration Clients	Lake's Average Length of Stay (Days)	Stein Restoration Clients	Stein Average Length of Stay (Days)	Statewide Restoration Waitlist	Statewide Average Wait (Days)
Jul-16	45	62	44	98	15	6
Aug-16	45	100	41	104	16	4
Sep-16	44	102	42	86	17	4
Oct-16	44	118	40	84	20	5
Nov-16	47	106	40	120	14	5
Dec-16	52	113	37	117	14	4
Jan-17	49	116	39	115	22	5
Feb-17	48	105	47	105	16	4
Mar-17	44	76	44	94	12	6
Apr-17	41	110	41	137	21	4
May-17	50	93	40	87	25	6
Jun-17	52	64	44	114	29	6
Jul-17	55	117	37	83	19	4
Aug-17	57	101	31	120	17	5
Sep-17	55	72	33	101	23	5
Oct-17						
Nov-17						
Dec-17						
Jan-18						
Feb-18						
Mar-18						
Apr-18						
May-18						
Jun-18						



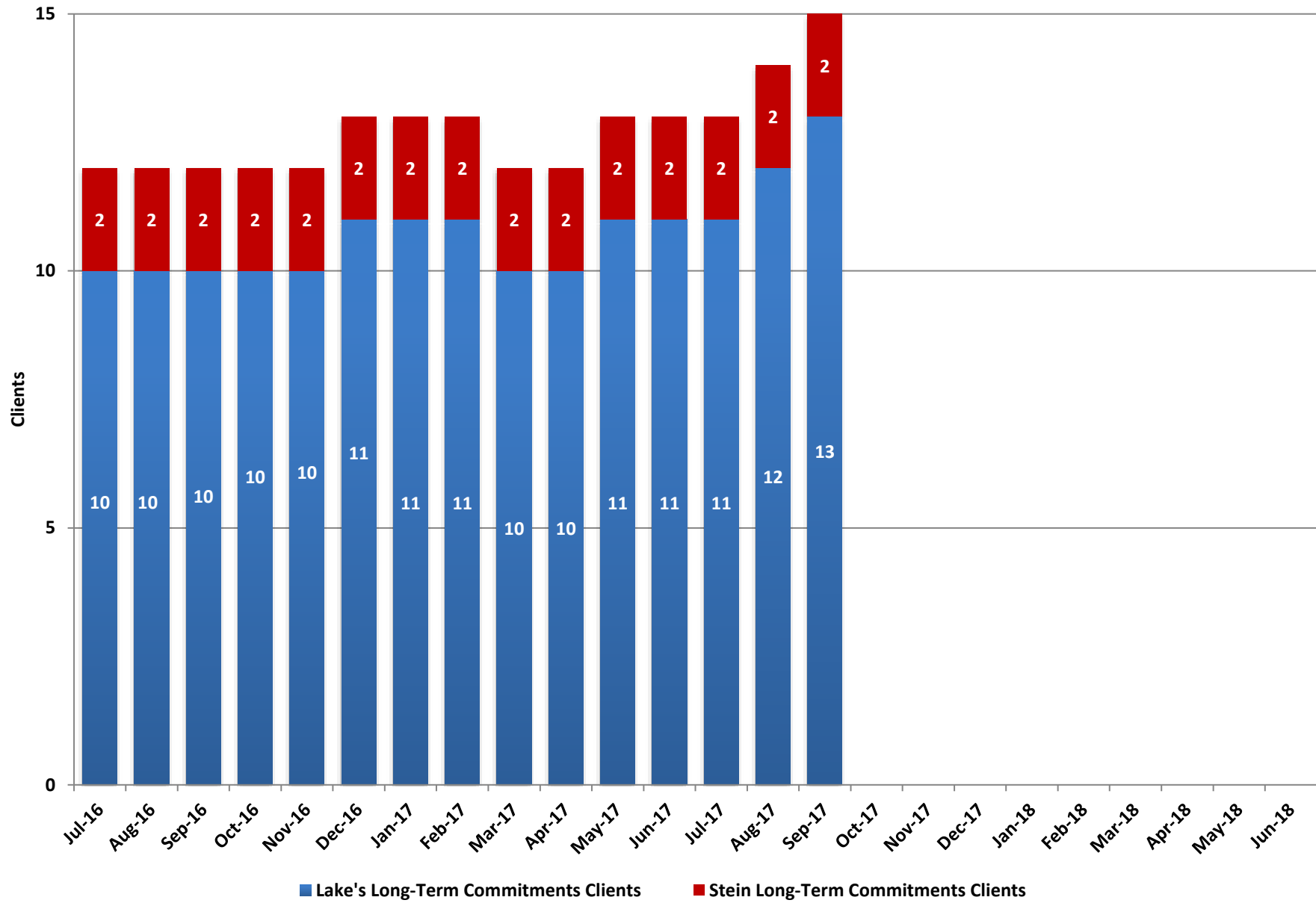
#### Fiscal Year Averages

	Lake's Restoration Clients	Lake's Average Length of Stay (Days)	Stein Restoration Clients	Stein Average Length of Stay (Days)	Statewide Restoration Waitlist	Average Wait (Days)
FY13	45	81				
FY14	48	96				
FY15	50	92				
FY16	49	108	32	88	17	24
FY17	47	97	42	105	18	5
FY18 YTD	56	97	34	101	20	5



Note: The Statewide Restoration Average Waitlist (days) is the total number of days individuals are on the waitlist and does not back out the 7 days that Lake's has to transfer them to a facility.

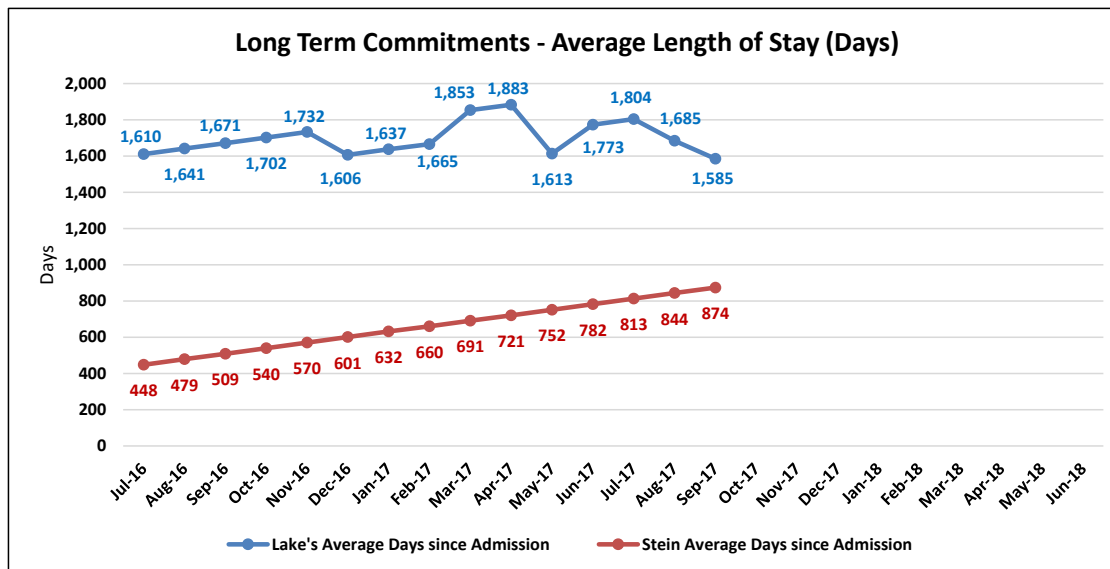
# Adult Forensic Long-Term Commitments



### Adult Forensic Facilities - Long-Term Commitments

Lake's Crossing Center is a forensic behavioral health facility located in Sparks. The program provides treatment for severe mental illness and other disabling conditions that interfere with a person's ability to proceed with their adjudication or return to the community after having been found not guilty by reason of insanity/incompetent without probability of attaining competence. The facility has a bed capacity of 86. SNAMHS secure forensic units (Stein Hospital and C-Pod) provide competency evaluations to adults who are court committed. The bed capacity is 68.

	Lake's Long-Term Commitments Clients	Lake's Average Days since Admission	Stein Long-Term Commitments Clients	Stein Average Days since Admission
Jul-16	10	1,610	2	448
Aug-16	10	1,641	2	479
Sep-16	10	1,671	2	509
Oct-16	10	1,702	2	540
Nov-16	10	1,732	2	570
Dec-16	11	1,606	2	601
Jan-17	11	1,637	2	632
Feb-17	11	1,665	2	660
Mar-17	10	1,853	2	691
Apr-17	10	1,883	2	721
May-17	11	1,613	2	752
Jun-17	11	1,773	2	782
Jul-17	11	1,804	2	813
Aug-17	12	1,685	2	844
Sep-17	13	1,585	2	874
Oct-17				
Nov-17				
Dec-17				
Jan-18				
Feb-18				
Mar-18				
Apr-18				
May-18				
Jun-18				



#### Fiscal Year Averages

	Lake's Long-Term Commitments Clients	Lake's Average Days since Admission	Stein Long-Term Commitments Clients	Stein Average Days since Admission
FY13	6	1,260		
FY14	9	1,207		
FY15	10	1,423	2	
FY16	10	1,660	2	250
FY17	10	1,699	2	615
FY18 YTD	12	1,691	2	844

Note: These clients are committed for up to ten years.

