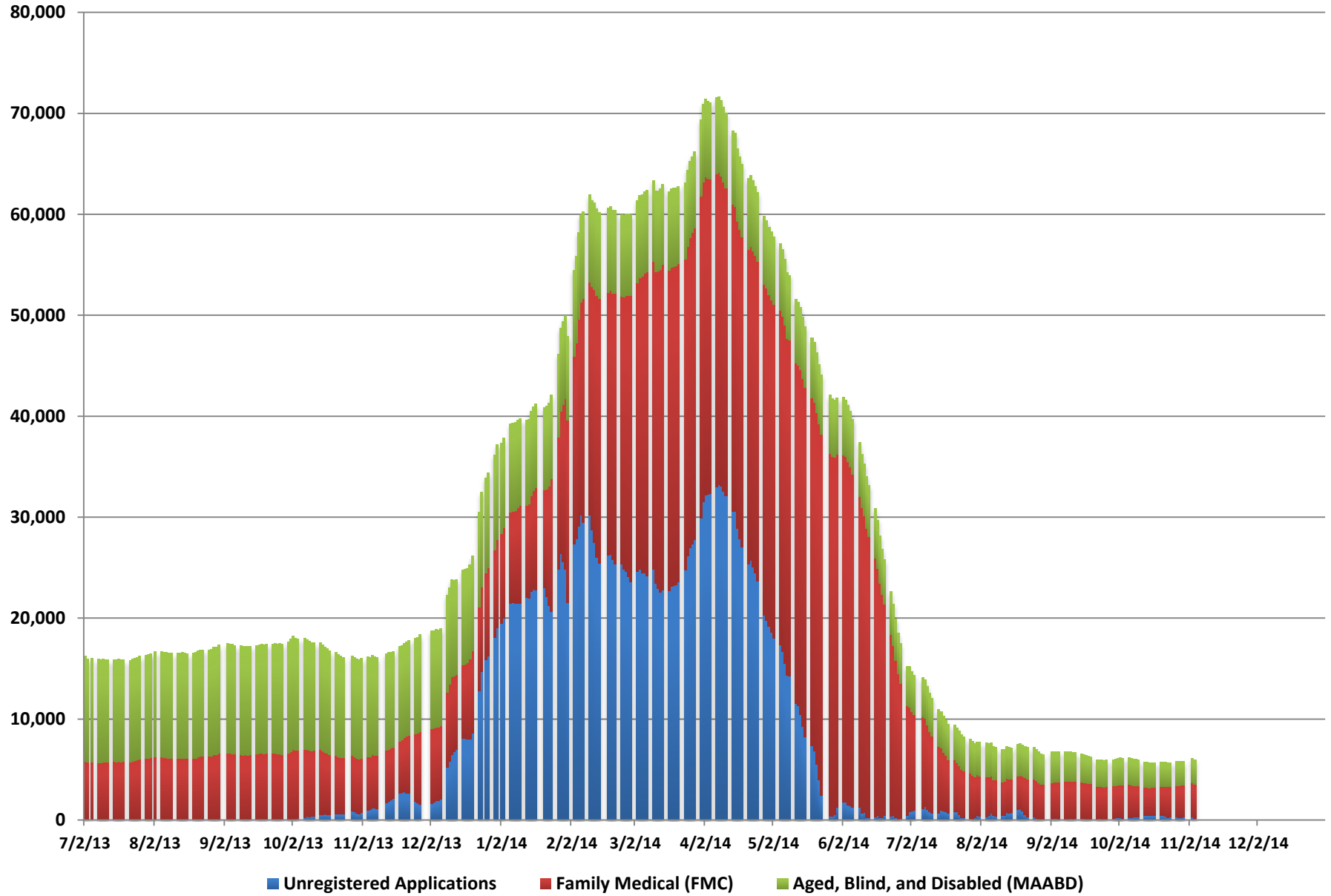


# Medicaid Chart Pack

---

November 2014

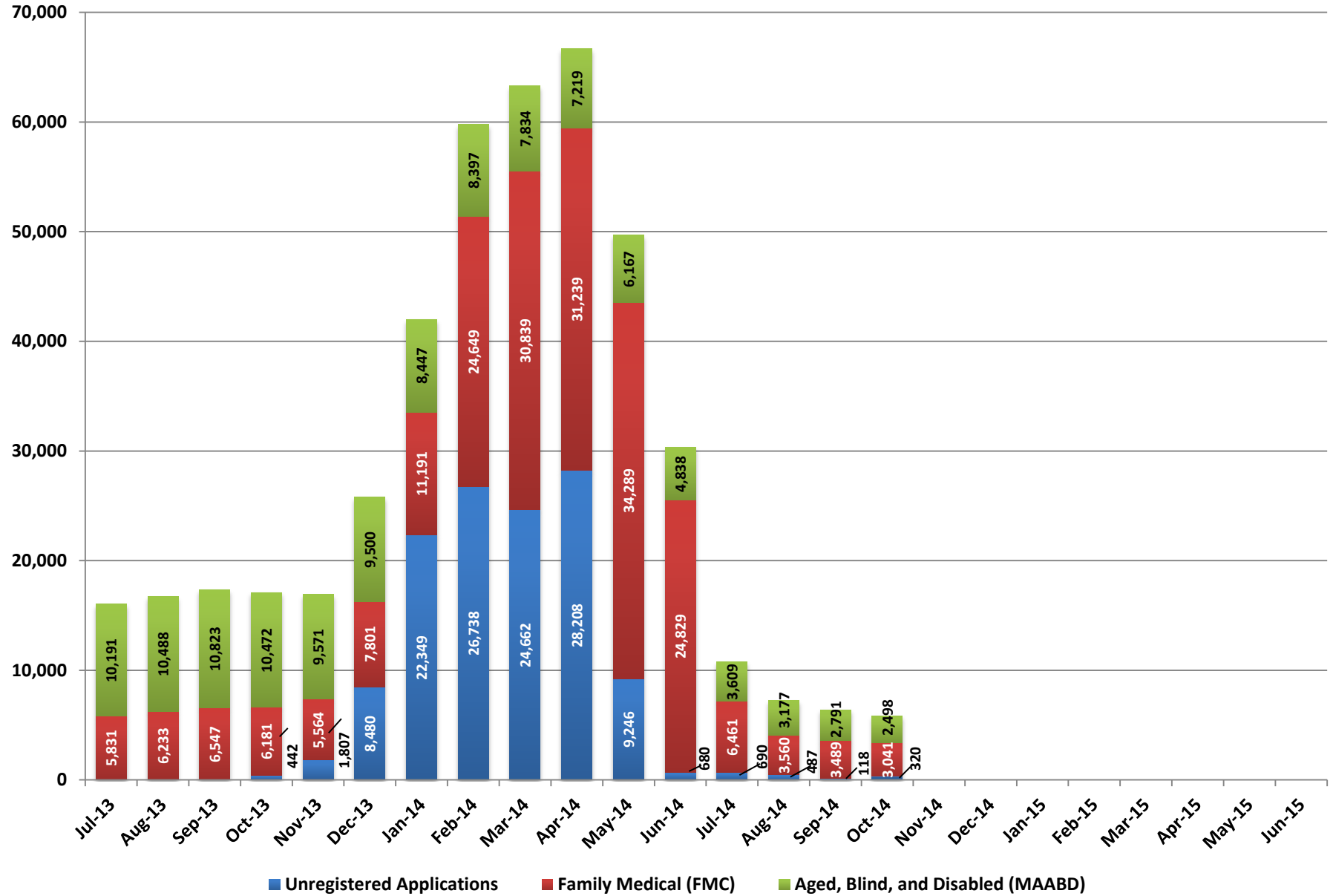
# Pending Applications



## Pending Applications

Date	Unregistered Applications	Family Medical (FMC)			Aged, Blind, and Disabled (MAABD)				Total Medicaid Pending Applications
		Pending <= 45 Days	Pending > 45 Days	Total Applications	Pending <= 45 Days	Pending 46-90 Days	Pending > 90 Days	Total Applications	
10/1/14	247	2,715	482	3,197	1,046	306	1,336	2,688	6,132
10/2/14	244	2,801	449	3,250	1,055	289	1,333	2,677	6,171
10/3/14	188	2,868	419	3,287	1,021	297	1,310	2,628	6,103
10/6/14	235	2,833	449	3,282	1,029	300	1,299	2,628	6,145
10/7/14	235	2,808	418	3,226	1,046	284	1,299	2,629	6,090
10/8/14	288	2,736	369	3,105	1,076	270	1,295	2,641	6,034
10/9/14	313	2,724	347	3,071	1,078	259	1,284	2,621	6,005
10/10/14	336	2,688	335	3,023	1,068	263	1,268	2,599	5,958
10/13/14	420	2,468	345	2,813	1,000	277	1,249	2,526	5,759
10/14/14	426	2,456	329	2,785	987	276	1,239	2,502	5,713
10/15/14	433	2,451	297	2,748	1,003	254	1,225	2,482	5,663
10/16/14	447	2,501	278	2,779	988	244	1,221	2,453	5,679
10/17/14	451	2,495	275	2,770	960	250	1,204	2,414	5,635
10/20/14	454	2,587	286	2,873	945	254	1,206	2,405	5,732
10/21/14	423	2,634	277	2,911	957	250	1,198	2,405	5,739
10/22/14	355	2,718	262	2,980	962	241	1,194	2,397	5,732
10/23/14	224	2,820	244	3,064	968	230	1,191	2,389	5,677
10/24/14	277	2,789	247	3,036	963	229	1,190	2,382	5,695
10/27/14	280	2,874	269	3,143	933	239	1,193	2,365	5,788
10/28/14	240	2,918	261	3,179	947	232	1,184	2,363	5,782
10/29/14	250	2,952	243	3,195	979	220	1,177	2,376	5,821
10/30/14	271	2,946	235	3,181	996	209	1,172	2,377	5,829
11/3/14	269	3,122	292	3,414	1,004	253	1,188	2,445	6,128
11/4/14	146	3,112	292	3,404	1,010	252	1,183	2,445	5,995
11/5/14									
11/6/14									
11/7/14									
11/10/14									

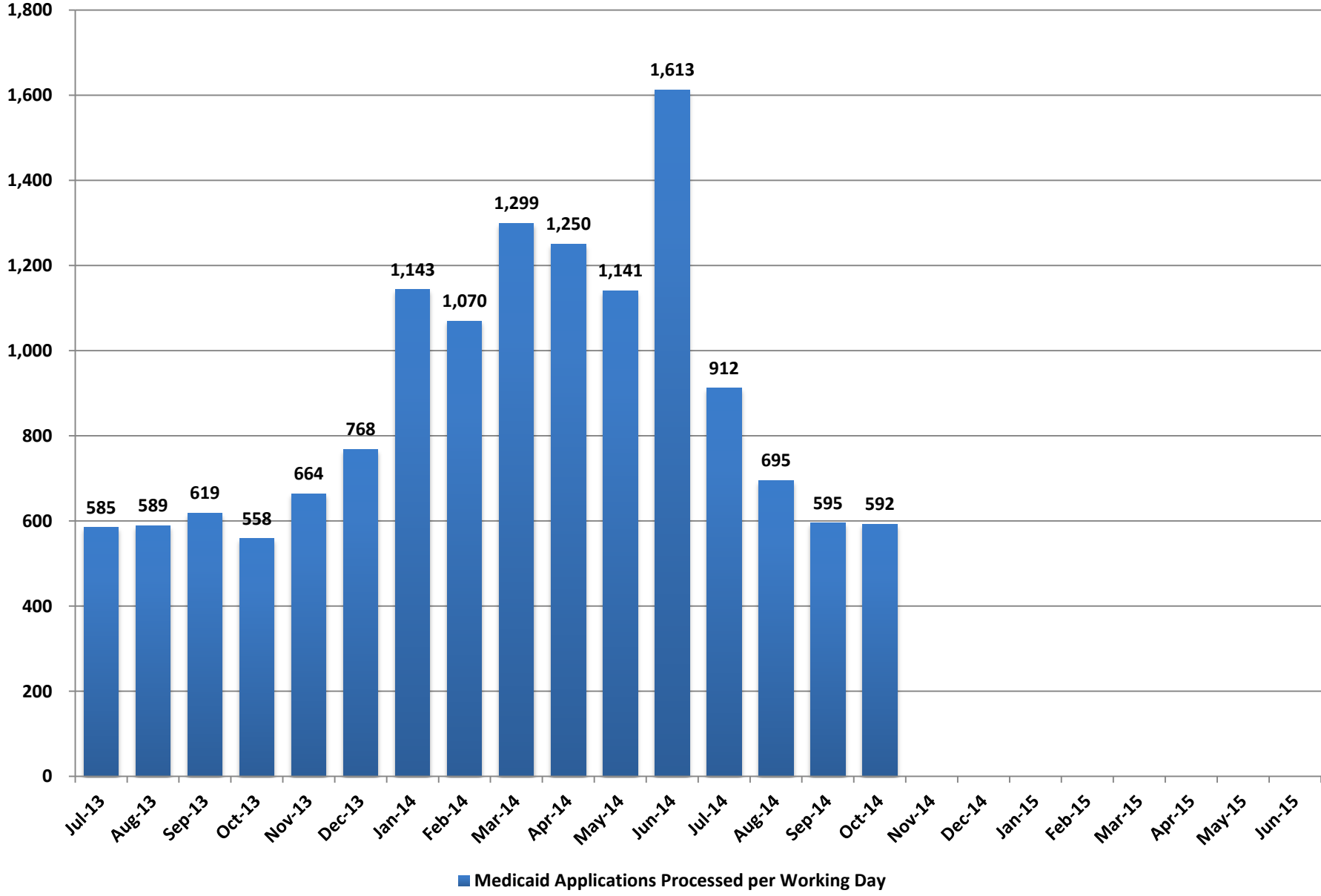
## Pending Applications (Monthly Average)



### Pending Applications - Monthly Average

Month	BOS	Family Medical (FMC)			Aged, Blind, and Disabled (MAABD)				Total Medicaid
	Unregistered Applications	Pending <= 45 Days	Pending > 45 Days	Total Applications	Pending <= 45 Days	Pending 46-90 Days	Pending > 90 Days	Total Applications	Pending Applications
Jul-13		5,096	734	5,831	2,891	1,213	6,086	10,191	16,021
Aug-13		5,540	693	6,233	3,129	1,249	6,110	10,488	16,721
Sep-13		5,740	807	6,547	3,245	1,384	6,194	10,823	17,370
Oct-13	442	5,115	1,067	6,181	2,723	1,409	6,340	10,472	17,094
Nov-13	1,807	4,578	986	5,564	1,847	1,272	6,452	9,571	16,942
Dec-13	8,480	6,427	1,374	7,801	1,767	1,037	6,696	9,500	25,782
Jan-14	22,349	8,793	2,397	11,191	1,820	839	5,788	8,447	42,347
Feb-14	26,738	16,099	8,550	24,649	2,205	1,209	4,983	8,397	59,785
Mar-14	24,662	15,219	15,620	30,839	1,974	1,381	4,479	7,834	63,335
Apr-14	28,208	8,598	22,640	31,239	1,506	1,547	4,166	7,219	66,666
May-14	9,246	7,587	26,702	34,289	1,104	1,121	3,941	6,167	49,702
Jun-14	680	6,605	18,224	24,829	946	698	3,195	4,838	30,347
Jul-14	690	3,449	3,012	6,461	1,096	344	2,169	3,609	10,760
Aug-14	487	2,772	788	3,560	1,139	315	1,724	3,177	7,224
Sep-14	118	2,836	654	3,489	1,056	315	1,420	2,791	6,399
Oct-14	320	2,717	323	3,041	1,000	258	1,239	2,498	5,858
Nov-14									
Dec-14									
Jan-15									
Feb-15									
Mar-15									
Apr-15									
May-15									
Jun-15									

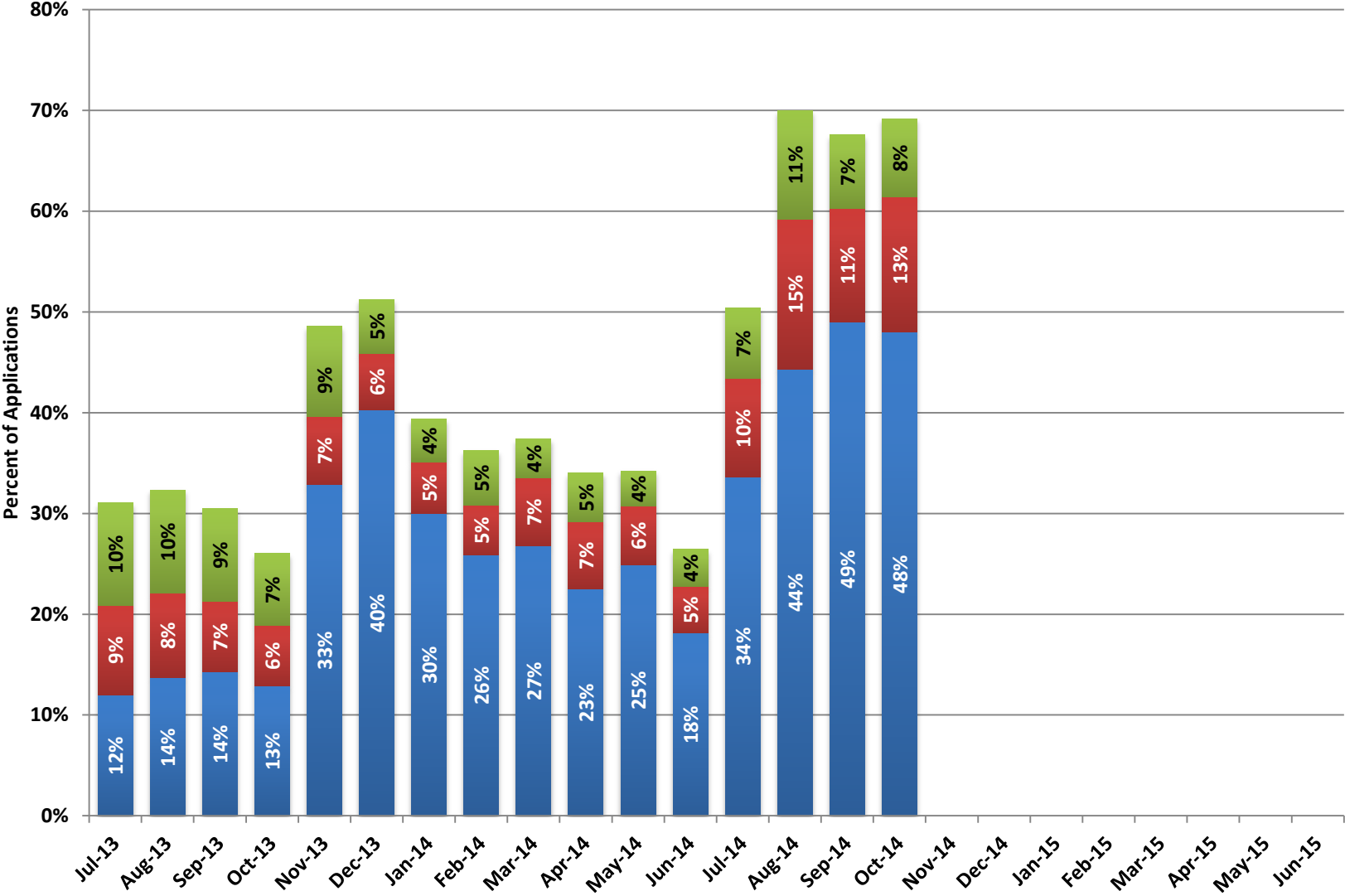
# Medicaid Applications Processed per Working Day



### Medicaid Applications Processed Per Working Day

Month	Medicaid Applications Processed per Working Day
Jul-13	585
Aug-13	589
Sep-13	619
Oct-13	558
Nov-13	664
Dec-13	768
Jan-14	1,143
Feb-14	1,070
Mar-14	1,299
Apr-14	1,250
May-14	1,141
Jun-14	1,613
Jul-14	912
Aug-14	695
Sep-14	595
Oct-14	592
Nov-14	
Dec-14	
Jan-15	
Feb-15	
Mar-15	
Apr-15	
May-15	
Jun-15	

### Applications Processed within 15 Days



■ Percent of Applications Processed within 5 Days   ■ Percent of Applications Processed in 6 - 10 Days   ■ Percent of Applications Processed in 11 - 15 Days

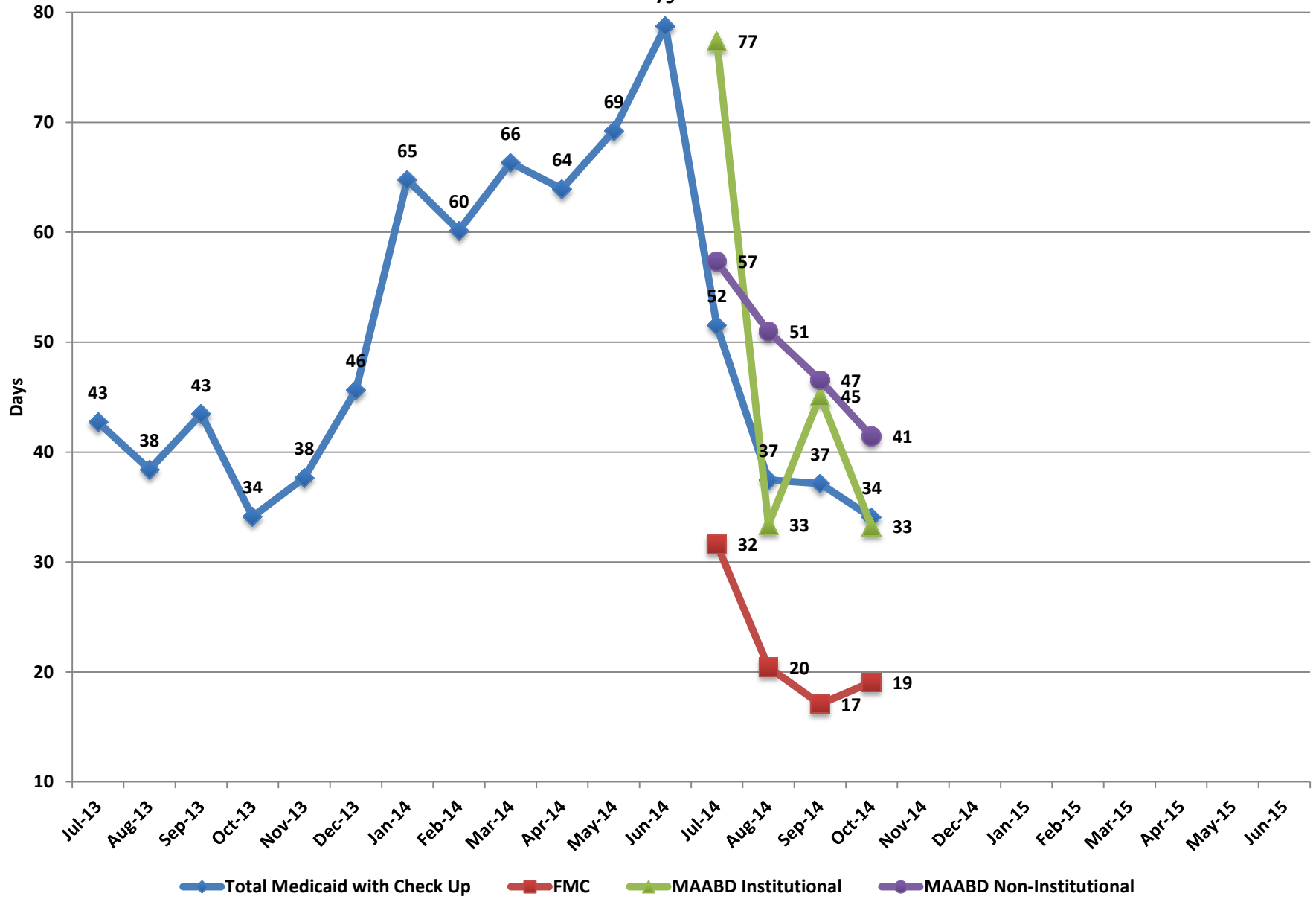


### Applications Processed within 15 Days

Month	Applications Processed within 5 Days	Percent of Applications Processed within 5 Days	Applications Processed in 6 - 10 Days	Percent of Applications Processed in 6 - 10 Days	Applications Processed in 11 - 15 Days	Percent of Applications Processed in 11 - 15 Days	Applications Processed within 15 Days	Total Applications Processed	Percent of Applications Processed within 15 Days
Jul-13	1,548	12%	1,143	9%	1,312	10%	4,003	12,884	31%
Aug-13	1,774	14%	1,091	8%	1,327	10%	4,192	12,969	32%
Sep-13	1,769	14%	869	7%	1,134	9%	3,772	12,382	30%
Oct-13	1,586	13%	741	6%	879	7%	3,206	12,321	26%
Nov-13	3,947	33%	811	7%	1,077	9%	5,835	12,004	49%
Dec-13	6,509	40%	906	6%	867	5%	8,282	16,160	51%
Jan-14	7,199	30%	1,238	5%	1,018	4%	9,455	24,023	39%
Feb-14	5,284	26%	1,015	5%	1,096	5%	7,395	20,416	36%
Mar-14	7,298	27%	1,828	7%	1,068	4%	10,194	27,244	37%
Apr-14	6,190	23%	1,833	7%	1,338	5%	9,361	27,511	34%
May-14	5,978	25%	1,386	6%	842	4%	8,206	23,970	34%
Jun-14	6,141	18%	1,581	5%	1,232	4%	8,954	33,881	26%
Jul-14	6,748	34%	1,958	10%	1,404	7%	10,110	20,070	50%
Aug-14	6,471	44%	2,172	15%	1,570	11%	10,213	14,590	70%
Sep-14	6,130	49%	1,404	11%	918	7%	8,452	12,507	68%
Oct-14	6,252	48%	1,740	13%	1,016	8%	9,008	13,019	69%
Nov-14									
Dec-14									
Jan-15									
Feb-15									
Mar-15									
Apr-15									
May-15									
Jun-15									

**Note:** Beginning with October 2013, this data reflects Family Medical (FMC), Newly Eligible Adults, Aged, Blind and Disabled (MAABD), and Nevada Check Up applications. Nevada Check Up applications were not included prior to October 2013. "One and done" applications, which are processed within a single day, started being included in this data in December 2013.

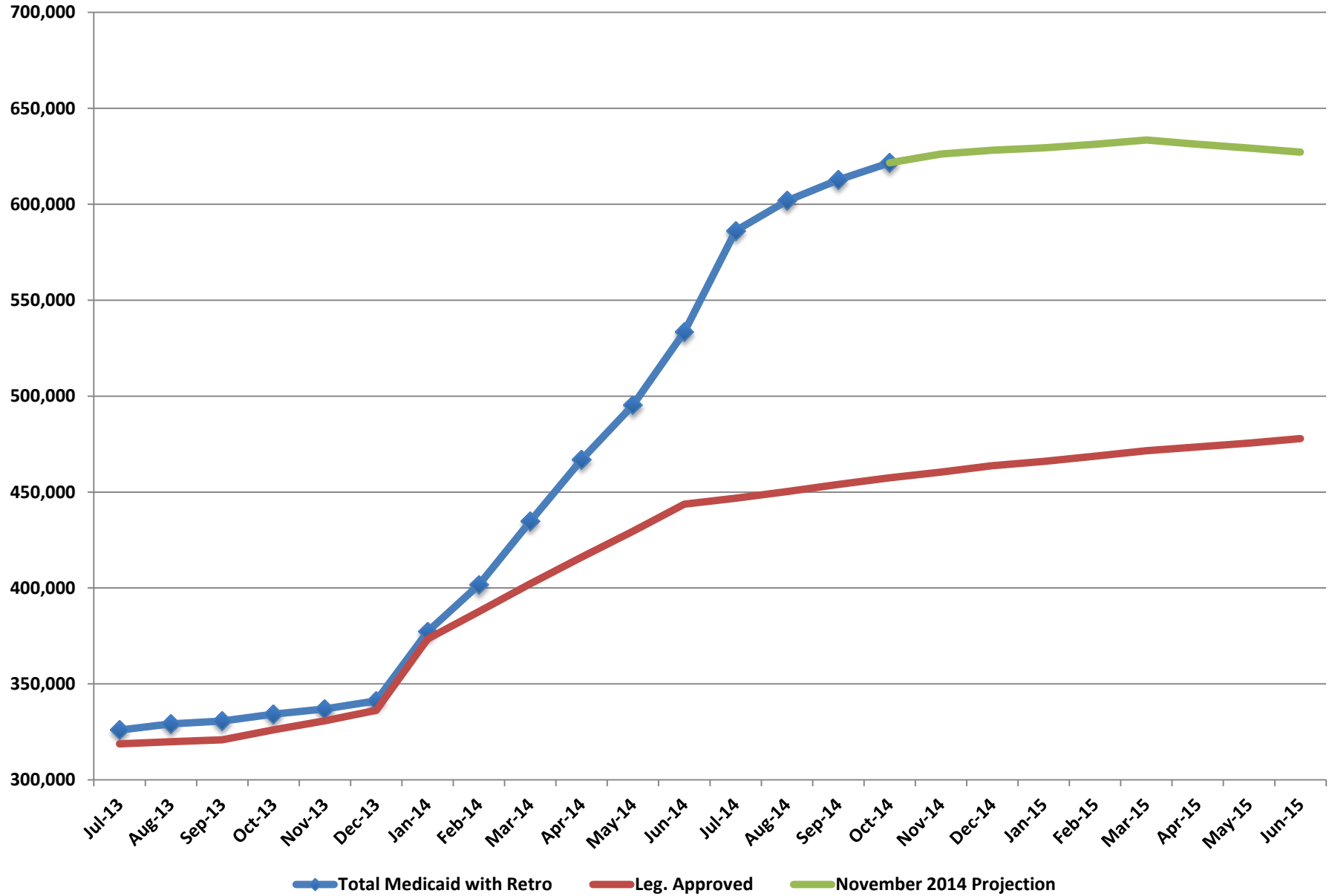
### Average Processing Time (Days)



### Average Processing Time (Days)

Month	Total Medicaid with Check Up	FMC	MAABD Institutional	MAABD Non-Institutional
Jul-13	43			
Aug-13	38			
Sep-13	43			
Oct-13	34			
Nov-13	38			
Dec-13	46			
Jan-14	65			
Feb-14	60			
Mar-14	66			
Apr-14	64			
May-14	69			
Jun-14	79			
Jul-14	52	32	77	57
Aug-14	37	20	33	51
Sep-14	37	17	45	47
Oct-14	34	19	33	41
Nov-14				
Dec-14				
Jan-15				
Feb-15				
Mar-15				
Apr-15				
May-15				
Jun-15				

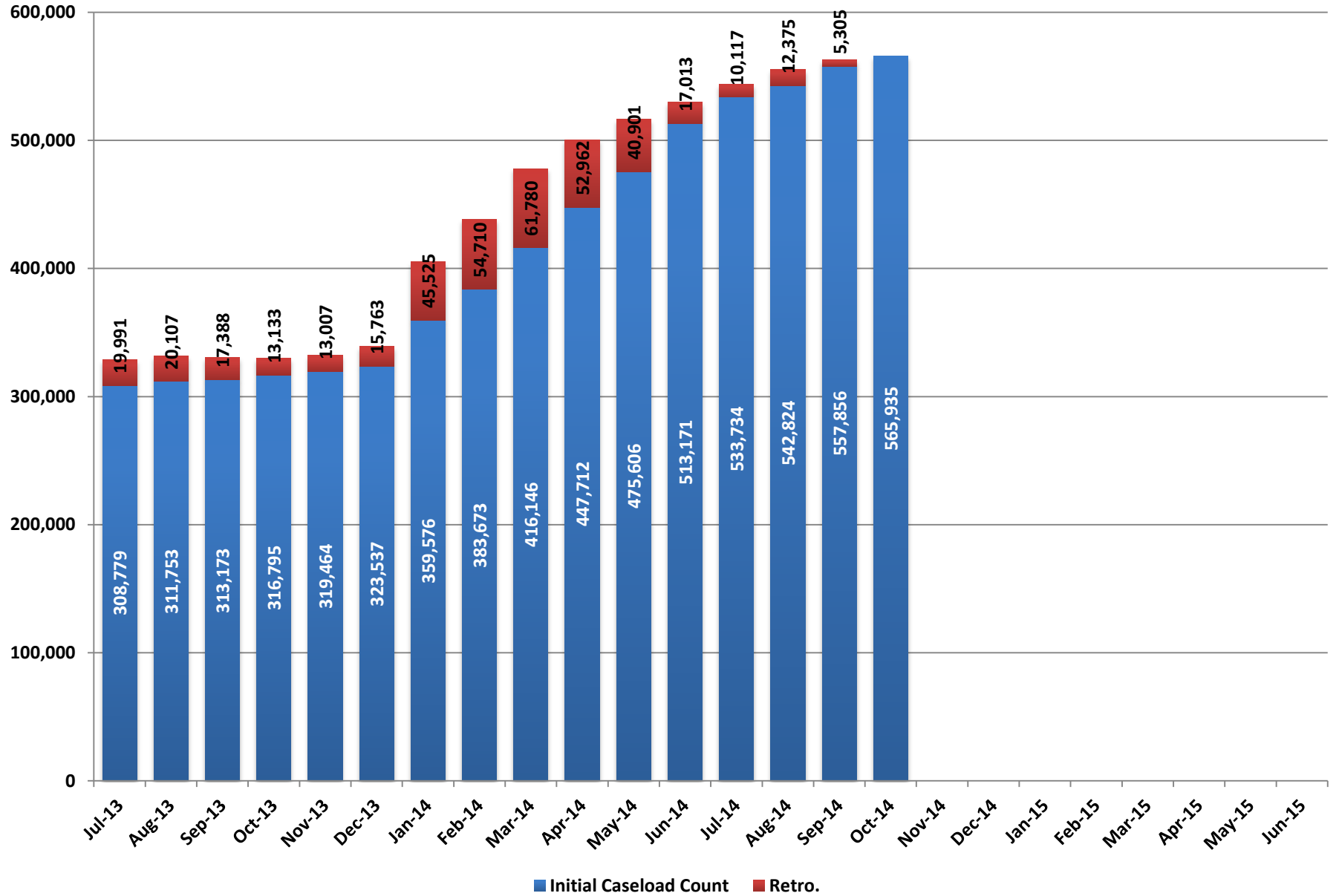
### Total Medicaid with Estimated Retro.



### Total Medicaid with Estimated Retro.

Month	Total Medicaid with Retro	Leg. Approved	November 2014 Projection
Jul-13	325,988	318,814	
Aug-13	329,130	319,846	
Sep-13	330,623	320,921	
Oct-13	334,305	326,130	
Nov-13	336,949	330,815	
Dec-13	341,134	336,195	
Jan-14	377,364	373,495	
Feb-14	401,779	387,692	
Mar-14	434,820	402,196	
Apr-14	466,958	416,049	
May-14	495,275	429,646	
Jun-14	533,460	443,668	
Jul-14	586,227	446,834	
Aug-14	601,782	450,233	
Sep-14	612,735	453,968	
Oct-14	621,571	457,435	
Nov-14		460,457	626,197
Dec-14		463,816	628,218
Jan-15		466,014	629,383
Feb-15		468,657	631,242
Mar-15		471,564	633,449
Apr-15		473,553	631,264
May-15		475,498	629,247
Jun-15		477,927	627,161

## Total Medicaid - Initial and Retroactive Caseload Counts



### Initial and Retroactive Caseload Counts

	FMC				Aged				Blind and Disabled				Total MAABD				Total Medicaid			
	Initial Caseload Count	Retro.	Caseload with Retro.	% Retro.	Initial Caseload Count	Retro.	Caseload with Retro.	% Retro	Initial Caseload Count	Retro.	Caseload with Retro.	% Retro	Initial Caseload Count	Retro.	Caseload with Retro.	% Retro	Initial Caseload Count	Retro.	Caseload with Retro.	% Retro
Jul-13	225,093	17,018	242,111	7.6%	10,774	251	11,025	2.3%	33,545	1,775	35,320	5.3%	75,159	2,813	77,972	3.7%	308,779	19,991	328,770	6.5%
Aug-13	227,559	15,874	243,433	7.0%	10,792	264	11,056	2.4%	33,677	1,869	35,546	5.5%	75,479	4,166	79,645	5.5%	311,753	20,107	331,860	6.4%
Sep-13	228,643	13,395	242,038	5.9%	10,791	278	11,069	2.6%	33,864	1,671	35,535	4.9%	75,786	3,847	79,633	5.1%	313,173	17,388	330,561	5.6%
Oct-13	231,618	9,462	241,080	4.1%	10,842	278	11,120	2.6%	34,201	1,334	35,535	3.9%	76,358	3,520	79,878	4.6%	316,795	13,133	329,928	4.1%
Nov-13	233,412	9,733	243,145	4.2%	10,921	228	11,149	2.1%	34,392	1,111	35,503	3.2%	77,089	3,022	80,111	3.9%	319,464	13,007	332,471	4.1%
Dec-13	237,984	12,852	250,836	5.4%	10,802	372	11,174	3.4%	34,116	1,474	35,590	4.3%	76,579	2,737	79,316	3.6%	323,537	15,763	339,300	4.9%
Jan-14	272,842	43,262	316,104	15.9%	11,005	268	11,273	2.4%	34,268	1,384	35,652	4.0%	77,635	2,195	79,830	2.8%	359,576	45,525	405,101	12.7%
Feb-14	295,882	52,577	348,459	17.8%	11,054	262	11,316	2.4%	34,689	1,222	35,911	3.5%	78,677	2,045	80,722	2.6%	383,673	54,710	438,383	14.3%
Mar-14	327,122	60,140	387,262	18.4%	11,168	190	11,358	1.7%	35,253	853	36,106	2.4%	79,811	1,593	81,404	2.0%	416,146	61,780	477,926	14.8%
Apr-14	358,001	51,140	409,141	14.3%	11,169	239	11,408	2.1%	35,621	772	36,393	2.2%	80,503	1,679	82,182	2.1%	447,712	52,962	500,674	11.8%
May-14	385,547	39,068	424,615	10.1%	11,180	268	11,448	2.4%	35,857	690	36,547	1.9%	80,837	1,793	82,630	2.2%	475,606	40,901	516,507	8.6%
Jun-14	422,741	15,039	437,780	3.6%	11,187	283	11,470	2.5%	36,065	591	36,656	1.6%	81,181	1,885	83,066	2.3%	513,171	17,013	530,184	3.3%
Jul-14	442,159	8,761	450,920	2.0%	11,316	173	11,489	1.5%	36,472	341	36,813	0.9%	82,299	1,260	83,559	1.5%	533,734	10,117	543,851	1.9%
Aug-14	450,734	10,900	461,634	2.4%	11,293	215	11,508	1.9%	36,638	445	37,083	1.2%	82,776	1,364	84,140	1.6%	542,824	12,375	555,199	2.3%
Sep-14	458,949	10,184	469,133	2.2%	11,363	149	11,512	1.3%	36,869	364	37,233	1.0%	83,635	910	84,545	1.1%	557,856	5,305	563,161	1.0%
Oct-14	471,109				11,563				37,574				85,387				565,935			
Nov-14																				
Dec-14																				
Jan-15																				
Feb-15																				
Mar-15																				
Apr-15																				
May-15																				
Jun-15																				

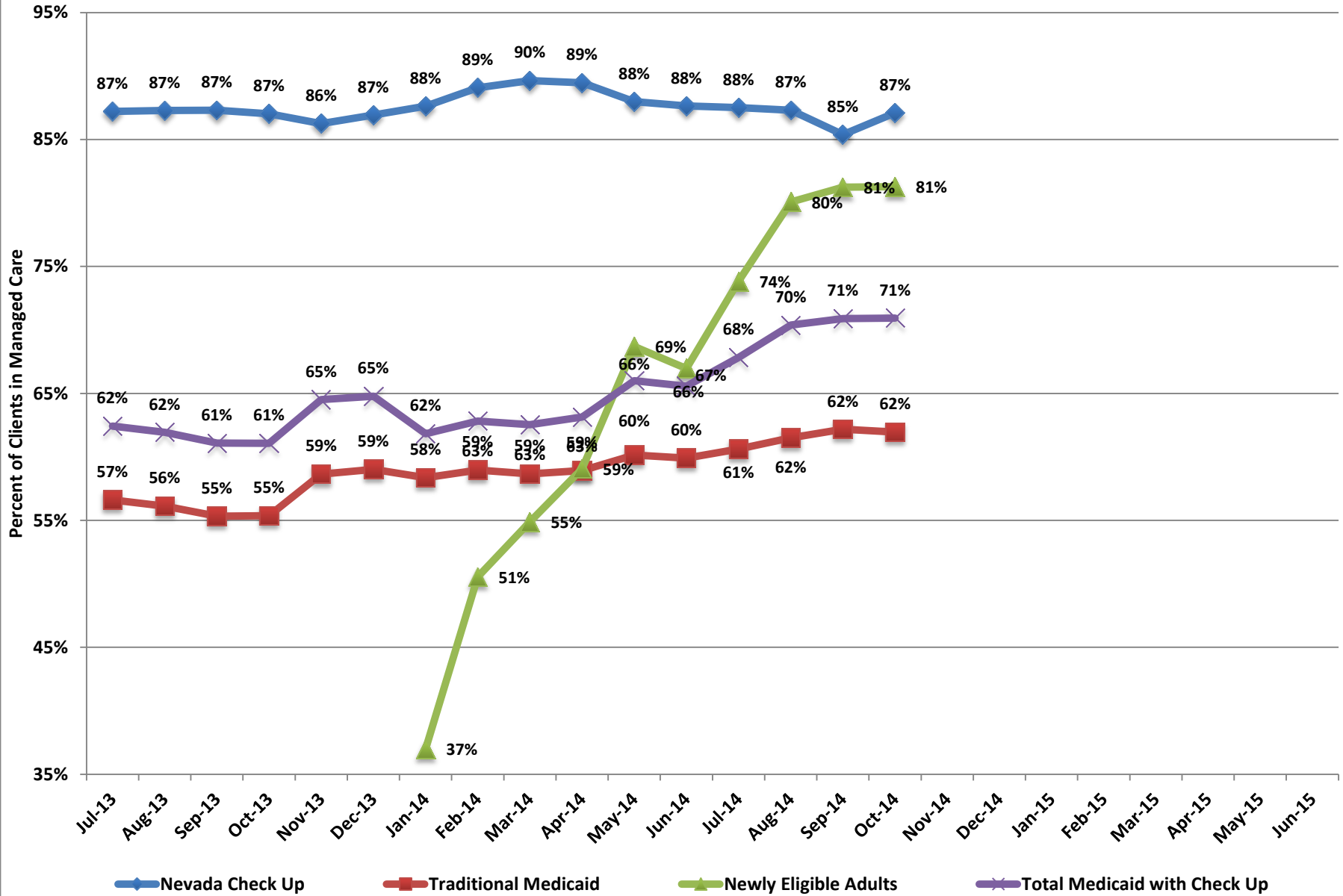
### Total Medicaid Initial Count and Retroactive Caseload Changes by Month

Caseload Month	Report Month																
	Jul-13	Aug-13	Sep-13	Oct-13	Nov-13	Dec-13	Jan-14	Feb-14	Mar-14	Apr-14	May-14	Jun-14	Jul-14	Aug-14	Sep-14	Oct-14	
Jul-13	Caseload	308,779	322,657	325,949	326,924	327,683	327,967	328,171	328,318	328,407	328,490	328,558	328,591	328,623	328,648	328,697	328,770
	Retro Rate		4.5%	5.6%	5.9%	6.1%	6.2%	6.3%	6.3%	6.4%	6.4%	6.4%	6.4%	6.4%	6.4%	6.5%	6.5%
Aug-13	Caseload		311,753	323,601	327,303	329,109	329,548	329,880	330,077	330,191	330,290	330,370	330,404	330,446	330,478	330,538	331,860
	Retro Rate			3.8%	5.0%	5.6%	5.7%	5.8%	5.9%	5.9%	6.0%	6.0%	6.0%	6.0%	6.0%	6.0%	6.4%
Sep-13	Caseload			313,173	321,520	326,741	327,710	328,297	328,586	328,738	328,884	328,999	329,052	329,110	329,159	329,230	330,561
	Retro Rate				2.7%	4.3%	4.6%	4.8%	4.9%	5.0%	5.0%	5.1%	5.1%	5.1%	5.1%	5.1%	5.6%
Oct-13	Caseload				316,795	323,716	325,928	327,061	327,571	327,854	328,091	328,275	328,363	328,446	328,510	328,600	329,928
	Retro Rate					2.2%	2.9%	3.2%	3.4%	3.5%	3.6%	3.6%	3.7%	3.7%	3.7%	3.7%	4.1%
Nov-13	Caseload					319,464	325,314	328,171	329,053	329,553	329,939	330,239	330,389	330,512	330,596	330,695	332,471
	Retro Rate						1.8%	2.7%	3.0%	3.2%	3.3%	3.4%	3.4%	3.5%	3.5%	3.5%	4.1%
Dec-13	Caseload						323,537	330,848	334,052	335,918	337,013	337,773	338,554	338,944	339,098	339,221	339,300
	Retro Rate							2.3%	3.3%	3.8%	4.2%	4.4%	4.6%	4.8%	4.8%	4.8%	4.9%
Jan-14	Caseload							359,576	372,080	384,491	393,347	397,964	402,389	404,263	404,729	404,938	405,101
	Retro Rate								3.5%	6.9%	9.4%	10.7%	11.9%	12.4%	12.6%	12.6%	12.7%
Feb-14	Caseload								383,673	398,685	414,399	425,507	433,954	437,253	437,934	438,179	438,383
	Retro Rate									3.9%	8.0%	10.9%	13.1%	14.0%	14.1%	14.2%	14.3%
Mar-14	Caseload									416,146	431,234	451,198	467,100	475,863	477,268	477,655	477,926
	Retro Rate										3.6%	8.4%	12.2%	14.4%	14.7%	14.8%	14.8%
Apr-14	Caseload										447,712	464,902	484,962	497,619	499,739	500,329	500,674
	Retro Rate											3.8%	8.3%	11.1%	11.6%	11.8%	11.8%
May-14	Caseload											475,606	495,797	512,230	515,209	516,065	516,507
	Retro Rate												4.2%	7.7%	8.3%	8.5%	8.6%
Jun-14	Caseload												513,171	523,388	528,232	529,521	530,184
	Retro Rate													2.0%	2.9%	3.2%	3.3%
Jul-14	Caseload													533,734	540,133	542,626	543,851
	Retro Rate														1.2%	1.7%	1.9%
Aug-14	Caseload														542,824	552,450	555,199
	Retro Rate															1.8%	1.3%
Sep-14	Caseload															557,856	563,161
	Retro Rate																1.0%
Oct-14	Caseload																565,935
	Retro Rate																

Note: The first column shows the caseload month. Each month's original caseload without retro is highlighted in yellow. Reading horizontally across the chart shows how the caseload changes over time as retroactive caseload counts are added. The light green row associated with each caseload month shows the retro rate or growth of the caseload over the original count due to the addition of the retroactive caseload.



## Percent in Managed Care by Client Type

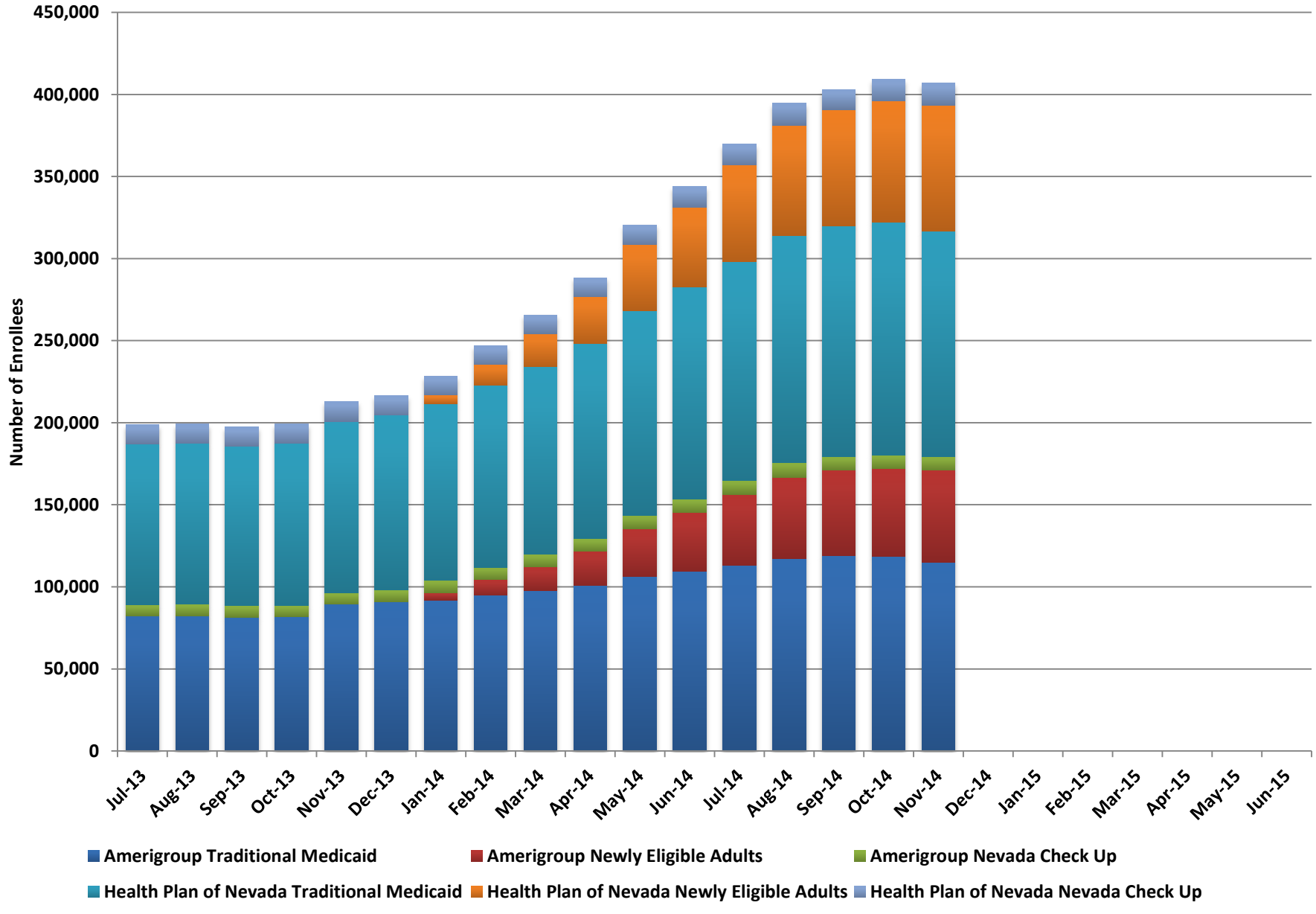


## Managed Care Enrollment

Month	Nevada Check Up			Traditional Medicaid			Newly Eligible Adults			Total Medicaid with Check Up		
	Managed Care Enrollment	Total Caseload	% in Managed Care	Managed Care Enrollment	Total Caseload net of SLMB	% in Managed Care	Managed Care Enrollment	Total Caseload	% in Managed Care	Managed Care Enrollment	Total Caseload net of SLMB	% in Managed Care
Jul-13	18,564	21,287	87%	180,321	318,586	57%				198,885	318,586	62%
Aug-13	18,691	21,415	87%	180,538	321,668	56%				199,229	321,668	62%
Sep-13	18,574	21,275	87%	178,738	322,998	55%				197,312	322,998	61%
Oct-13	18,617	21,392	87%	180,870	326,656	55%				199,487	326,656	61%
Nov-13	19,344	22,430	86%	193,669	330,225	59%				213,013	330,225	65%
Dec-13	19,224	22,116	87%	197,178	334,074	59%				216,402	334,074	65%
Jan-14	18,894	21,561	88%	198,860	340,784	58%	10,521	28,435	37%	228,275	369,219	62%
Feb-14	18,840	21,152	89%	205,617	348,689	59%	22,249	44,012	51%	246,706	392,701	63%
Mar-14	18,888	21,072	90%	211,857	361,156	59%	34,979	63,731	55%	265,724	424,887	63%
Apr-14	19,144	21,398	89%	220,021	373,432	59%	49,153	83,216	59%	288,318	456,648	63%
May-14	19,790	22,495	88%	231,148	384,267	60%	69,633	101,384	69%	320,571	485,651	66%
Jun-14	20,730	23,655	88%	238,677	398,393	60%	84,371	125,989	67%	343,778	524,382	66%
Jul-14	21,056	24,062	88%	246,697	406,985	61%	102,004	138,162	74%	369,757	545,147	68%
Aug-14	22,749	26,057	87%	255,444	415,319	62%	116,710	145,761	80%	394,903	561,080	70%
Sep-14	20,727	24,276	85%	259,459	417,316	62%	122,941	151,308	81%	403,127	568,624	71%
Oct-14	21,526	24,717	87%	260,195	420,040	62%	127,480	156,835	81%	409,201	576,875	71%
Nov-14	21,662			252,144			133,092			406,898		
Dec-14												
Jan-15												
Feb-15												
Mar-15												
Apr-15												
May-15												
Jun-15												

Note: Traditional Medicaid totals include both cat 11 (CHIP Expansion), and cat 12 (TANF/CHAP) populations.

## Managed Care Enrollment by Plan and Client Type

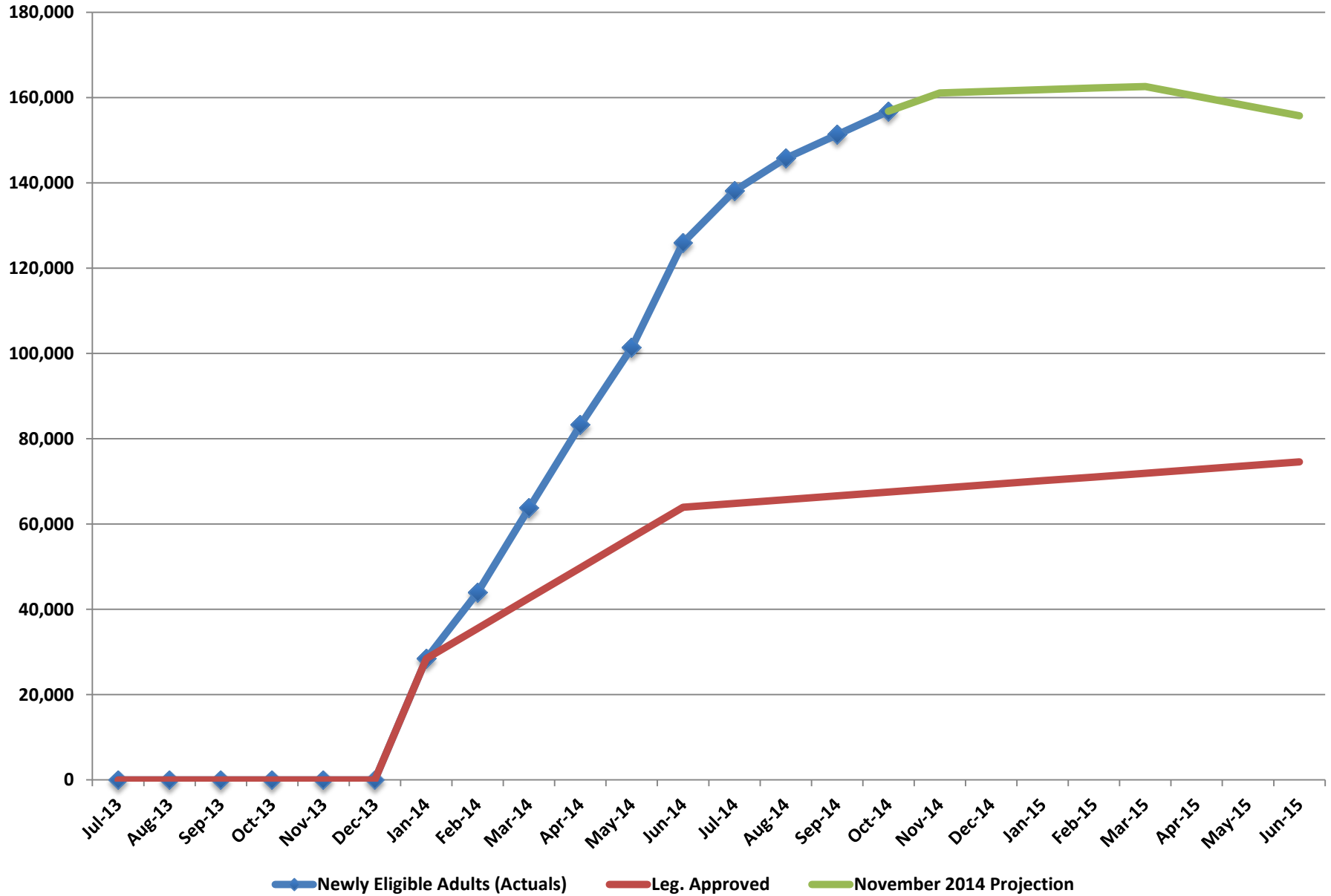


**Managed Care Enrollment by Plan and Client Type**

Month	Amerigroup								Health Plan of Nevada								Total Managed Care Enrollment
	Traditional Medicaid	% of Traditional Medicaid	Newly Eligible Adults	% of Newly Eligible	Nevada Check Up	% of Nevada Check Up	Total for Plan	% of Total	Traditional Medicaid	% of Traditional Medicaid	Newly Eligible Adults	% of Newly Eligible	Nevada Check Up	% of Nevada Check Up	Total for Plan	% of Total	
Jul-13	82,342	46%			6,836	37%	89,178	45%	97,979	54%			11,728	63%	109,707	55%	198,885
Aug-13	82,461	46%			6,933	37%	89,394	45%	98,077	54%			11,758	63%	109,835	55%	199,229
Sep-13	81,560	46%			6,912	37%	88,472	45%	97,178	54%			11,662	63%	108,840	55%	197,312
Oct-13	82,018	45%			6,711	36%	88,729	44%	98,852	55%			11,906	64%	110,758	56%	199,487
Nov-13	89,343	46%			7,195	37%	96,538	45%	104,326	54%			12,149	63%	116,475	55%	213,013
Dec-13	90,864	46%			7,370	38%	98,234	45%	106,314	54%			11,854	62%	118,168	55%	216,402
Jan-14	91,959	46%	4,431	45%	7,545	40%	103,935	46%	107,474	54%	5,443	55%	11,349	60%	124,266	54%	228,201
Feb-14	94,778	46%	9,635	43%	7,566	40%	111,979	45%	110,839	54%	12,614	57%	11,274	60%	134,727	55%	246,706
Mar-14	97,506	46%	14,762	42%	7,481	40%	119,749	45%	114,351	54%	20,217	58%	11,407	60%	145,975	55%	265,724
Apr-14	101,095	46%	20,670	42%	7,542	39%	129,307	45%	118,926	54%	28,483	58%	11,602	61%	159,011	55%	288,318
May-14	106,089	46%	29,432	42%	7,842	40%	143,363	45%	125,059	54%	40,201	58%	11,948	60%	177,208	55%	320,571
Jun-14	109,602	46%	35,758	42%	8,242	40%	153,602	45%	129,075	54%	48,613	58%	12,488	60%	190,176	55%	343,778
Jul-14	113,152	46%	43,213	42%	8,358	40%	164,723	45%	133,545	54%	58,791	58%	12,698	60%	205,034	55%	369,757
Aug-14	117,126	46%	49,565	42%	9,101	40%	175,792	45%	138,318	54%	67,145	58%	13,648	60%	219,111	55%	394,903
Sep-14	118,938	46%	52,175	42%	8,205	40%	179,318	44%	140,521	54%	70,766	58%	12,522	60%	223,809	56%	403,127
Oct-14	118,400	46%	53,694	42%	8,229	38%	180,323	44%	141,795	54%	73,786	58%	13,297	62%	228,878	56%	409,201
Nov-14	114,862	46%	56,132	42%	8,357	39%	179,351	44%	137,282	54%	76,960	58%	13,305	61%	227,547	56%	406,898
Dec-14																	
Jan-15																	
Feb-15																	
Mar-15																	
Apr-15																	
May-15																	
Jun-15																	

**Note:** Traditional Medicaid totals include both cat 11 (CHIP Expansion), and cat 12 (TANF/CHAP) populations.

# Newly Eligible Adults

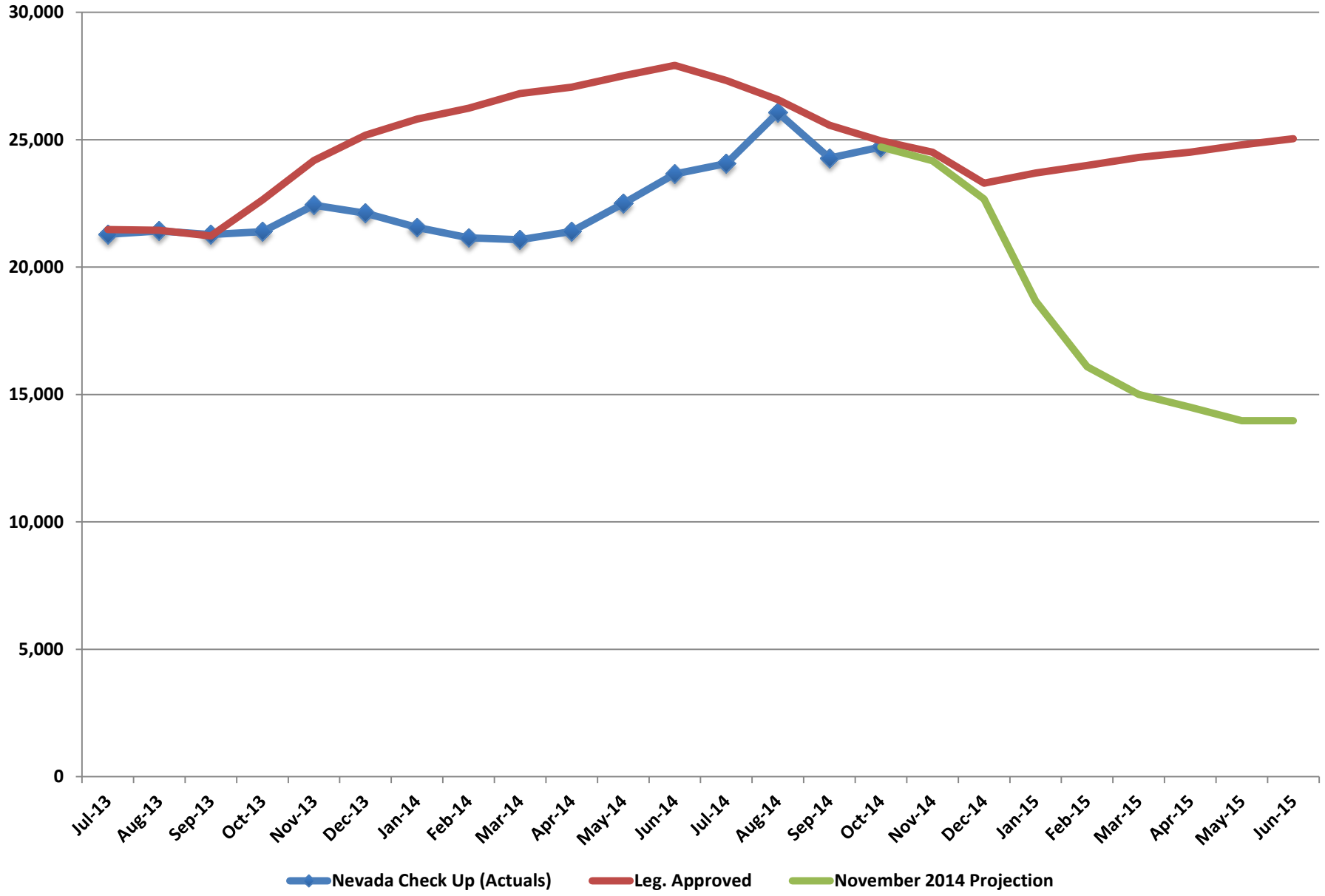


## Newly Eligible Adults (100% FMAP)

Month	Newly Eligible Adults (Actuals)	Leg. Approved	November 2014 Projection
Jul-13		0	
Aug-13		0	
Sep-13		0	
Oct-13		0	
Nov-13		0	
Dec-13		0	
Jan-14	28,435	28,429	
Feb-14	44,012	35,536	
Mar-14	63,731	42,643	
Apr-14	83,216	49,750	
May-14	101,384	56,858	
Jun-14	125,989	63,965	
Jul-14	138,162	64,849	
Aug-14	145,761	65,733	
Sep-14	151,308	66,617	
Oct-14	156,835	67,501	
Nov-14		68,386	161,112
Dec-14		69,270	161,490
Jan-15		70,154	161,868
Feb-15		71,038	162,246
Mar-15		71,922	162,624
Apr-15		72,806	160,346
May-15		73,690	158,064
Jun-15		74,574	155,775

**Note:** This caseload includes childless adults age 19-64 between 0%-138% FPL and parents age 19-64 between 23%-138% FPL. The Leg. Approved projection was based on childless adults age 19-64 between 0%-138% FPL and parents age 19-64 between 76%-138% FPL. CMS clarification on the MAGI eligibility criteria led to this revision for the parents group.

# Nevada Check Up



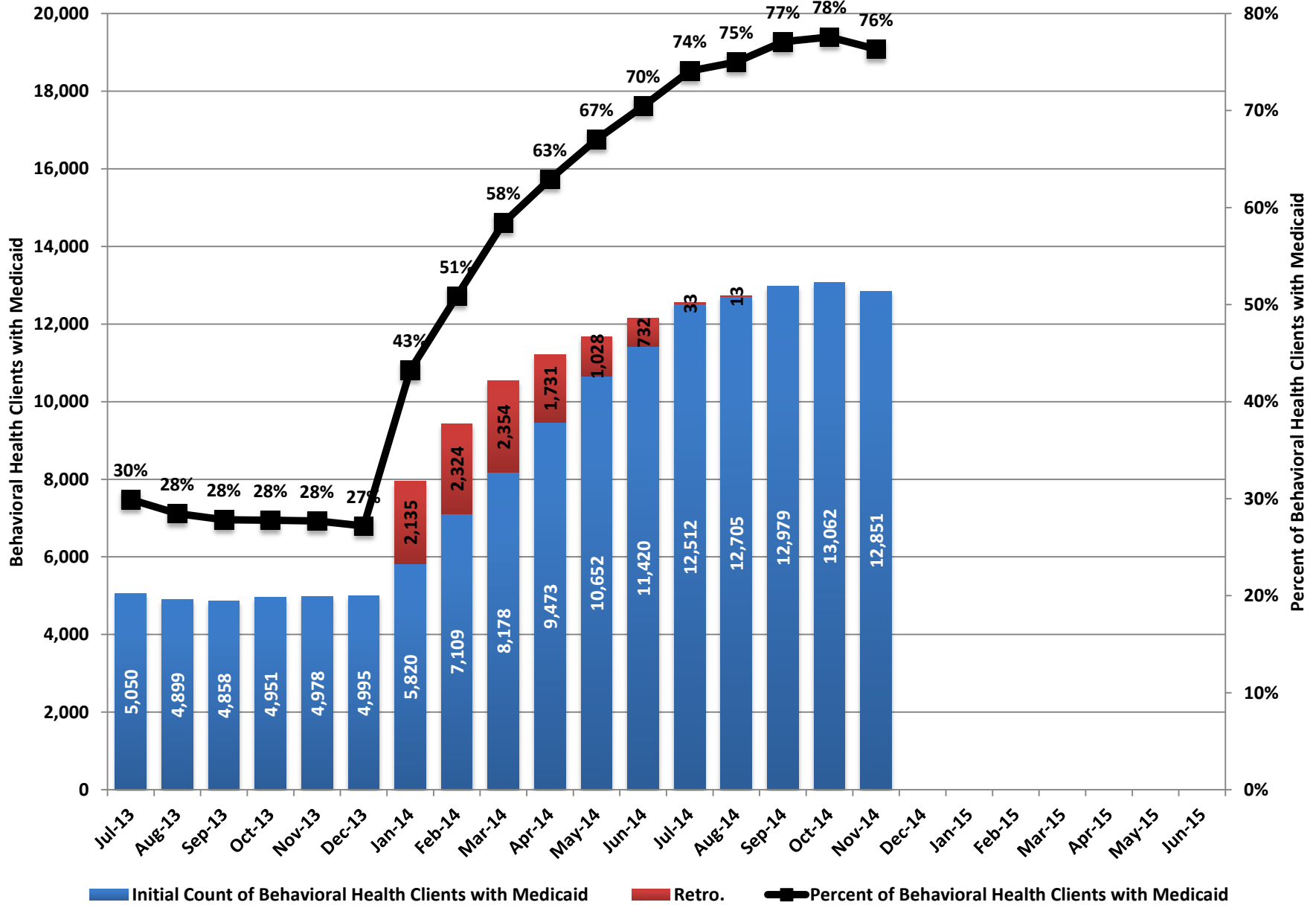
## Nevada Check Up

Month	Nevada Check Up (Actuals)	Leg. Approved	November 2014 Projection
Jul-13	21,287	21,470	
Aug-13	21,415	21,447	
Sep-13	21,275	21,225	
Oct-13	21,392	22,636	
Nov-13	22,430	24,181	
Dec-13	22,116	25,181	
Jan-14	21,561	25,807	
Feb-14	21,152	26,240	
Mar-14	21,072	26,810	
Apr-14	21,398	27,065	
May-14	22,495	27,513	
Jun-14	23,655	27,921	
Jul-14	24,062	27,320	
Aug-14	26,057	26,575	
Sep-14	24,276	25,566	
Oct-14	24,717	24,960	
Nov-14		24,511	24,172
Dec-14		23,297	22,672
Jan-15		23,694	18,672
Feb-15		23,988	16,090
Mar-15		24,302	15,000
Apr-15		24,506	14,500
May-15		24,799	13,974
Jun-15		25,039	13,974

**Note:** In October 2014, Nevada Check Up recipients below 138% FPL will begin transitioning to Medicaid upon redetermination. The CHIP (Enhanced) FMAP will continue for these clients when they are on Medicaid.



### Behavioral Health Clients with Medicaid



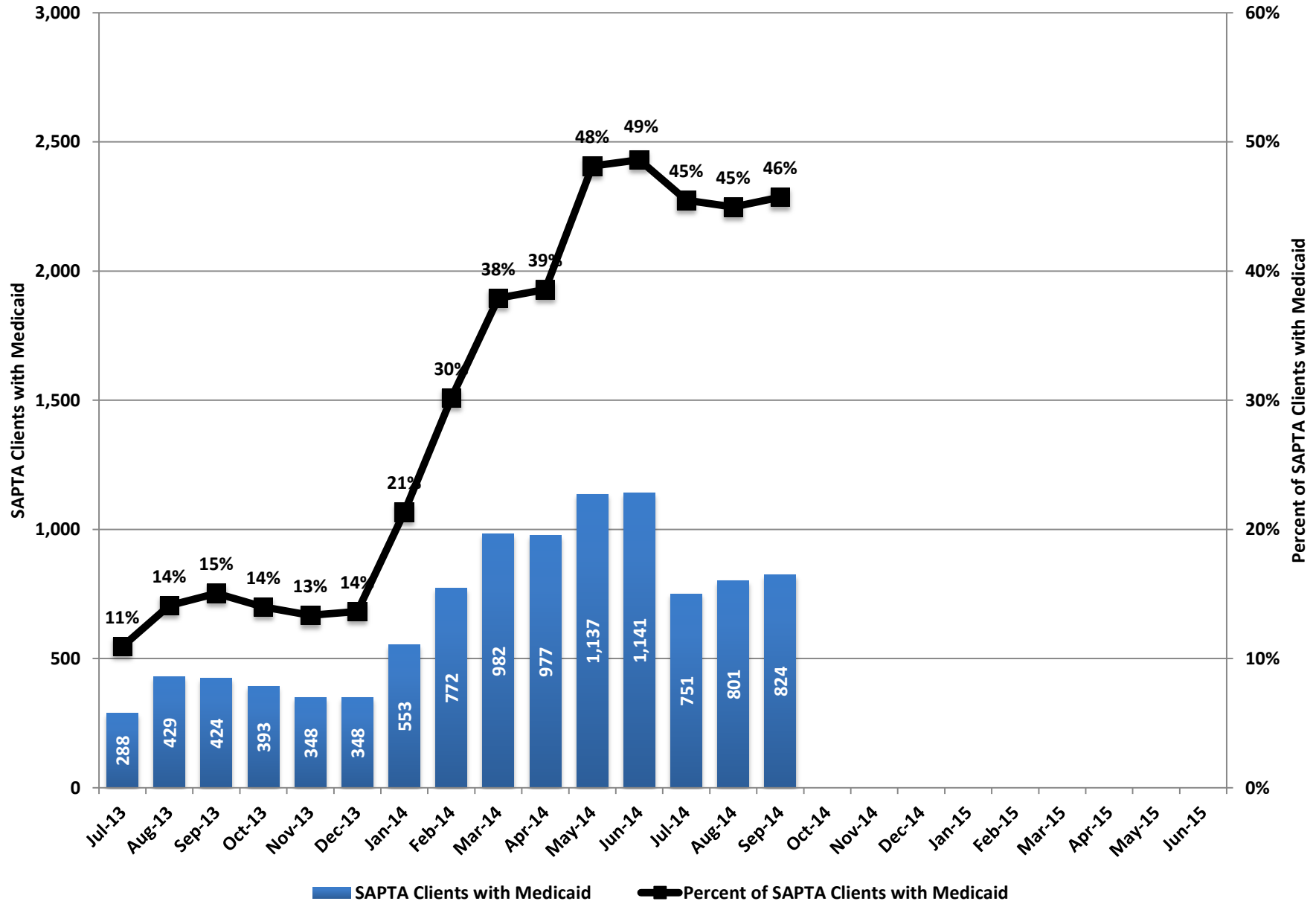
## Behavioral Health Clients with Medicaid

Month	Initial Count of Behavioral Health Clients with Medicaid	Retro.	Count with Retro. Of Behavioral Health Clients with Medicaid	Percent Retro.	Total Behavioral Health Clients	Percent of Behavioral Health Clients with Medicaid
Jul-13	5,050	0	5,050	0%	16,881	30%
Aug-13	4,899	0	4,899	0%	17,212	28%
Sep-13	4,858	0	4,858	0%	17,451	28%
Oct-13	4,951	0	4,951	0%	17,820	28%
Nov-13	4,978	0	4,978	0%	17,975	28%
Dec-13	4,995	0	4,995	0%	18,371	27%
Jan-14	5,820	2,135	7,955	37%	18,395	43%
Feb-14	7,109	2,324	9,433	33%	18,543	51%
Mar-14	8,178	2,354	10,532	29%	18,023	58%
Apr-14	9,473	1,731	11,204	18%	17,806	63%
May-14	10,652	1,028	11,680	10%	17,428	67%
Jun-14	11,420	732	12,152	6%	17,248	70%
Jul-14	12,512	33	12,545	0%	16,938	74%
Aug-14	12,705	13	12,718	0%	16,959	75%
Sep-14	12,979	N/A			16,836	77%
Oct-14	13,062	N/A			16,836	78%
Nov-14	12,851				16,836	76%
Dec-14						
Jan-15						
Feb-15						
Mar-15						
Apr-15						
May-15						
Jun-15						

*Note: October and November 2014 Total Behavioral Health Clients and Percent of Behavioral Health Clients with Medicaid are estimates. Updated retro information is not available at this time, but should be updated in next month's chart pack.*

Newly eligible client enrollment appears to have stabilized. Many of those who are newly eligible will present the first month as Fee-for-Service (FFS) then move to Managed Care Medicaid the following month. It is expected that the number of Managed Care Medicaid clients will decline as we transition them to the managed care network and their community providers.

### SAPTA Clients with Medicaid



## Substance Abuse Prevention and Treatment Agency (SAPTA) Clients with Medicaid

Month	SAPTA Clients with Medicaid	Total SAPTA Clients	Percent of SAPTA Clients with Medicaid
Jul-13	288	2,633	11%
Aug-13	429	3,042	14%
Sep-13	424	2,818	15%
Oct-13	393	2,807	14%
Nov-13	348	2,608	13%
Dec-13	348	2,549	14%
Jan-14	553	2,592	21%
Feb-14	772	2,558	30%
Mar-14	982	2,591	38%
Apr-14	977	2,533	39%
May-14	1,137	2,362	48%
Jun-14	1,141	2,347	49%
Jul-14	751	1,651	45%
Aug-14	801	1,781	45%
Sep-14	824	1,802	46%
Oct-14			
Nov-14			
Dec-14			
Jan-15			
Feb-15			
Mar-15			
Apr-15			
May-15			
Jun-15			

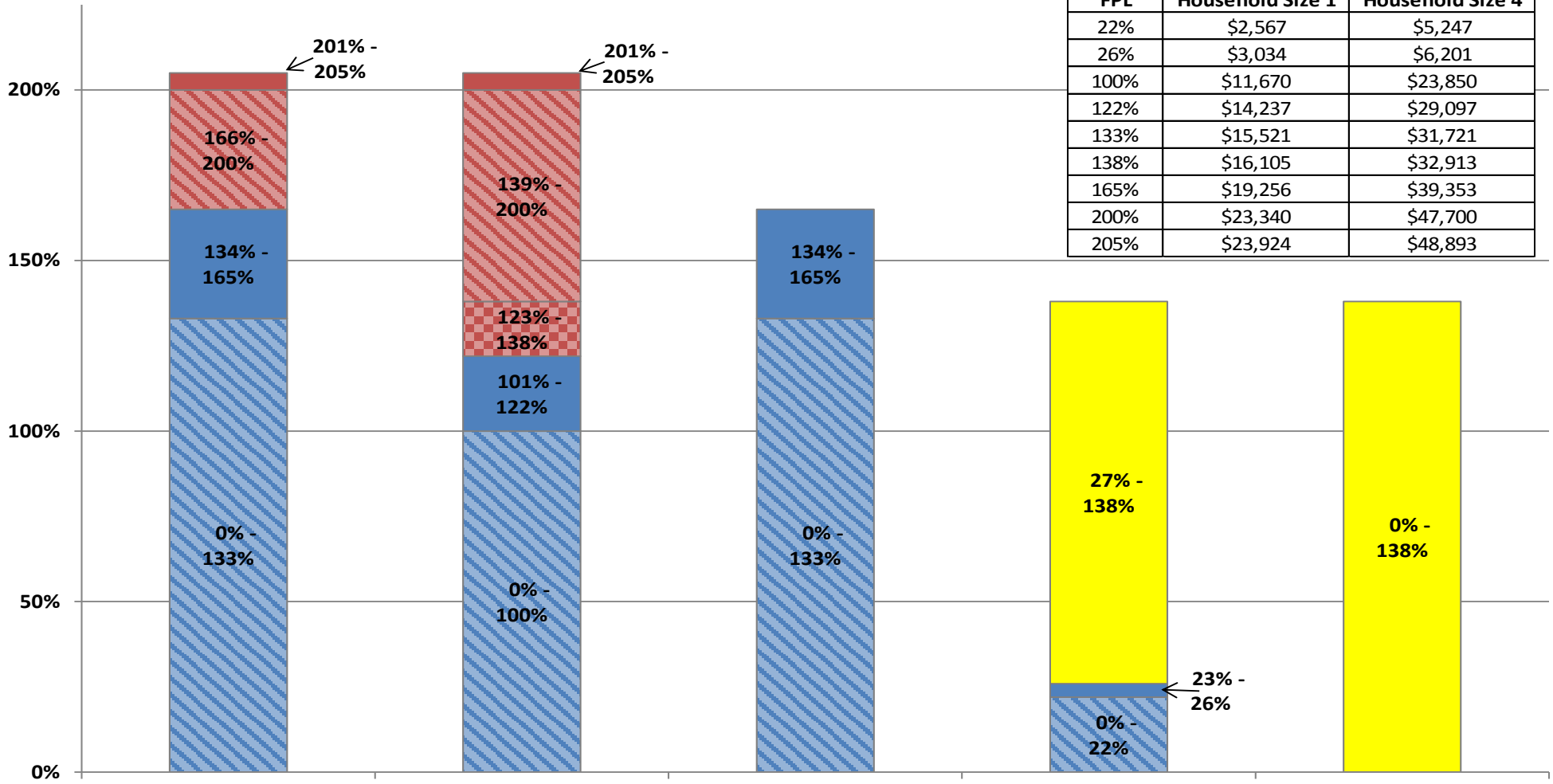
*Note: October's data is not available, but the data should be updated in next month's chart pack.*

This information represents those Medicaid eligible clients for whom SAPTA received a request for reimbursement from a SAPTA funded provider. A decline in identified Medicaid eligible clients indicates fewer requests for reimbursement from SAPTA funded providers for clients who are Medicaid eligible, which is the ultimate goal.

The retro eligible population is not longer included in this table and associated chart because there is no direct correlation to SAPTA services received and is therefore it is not appropriate to be included in this report.

# Medicaid Eligibility and FMAP

2014 Federal Poverty Guidelines		
FPL	Household Size 1	Household Size 4
22%	\$2,567	\$5,247
26%	\$3,034	\$6,201
100%	\$11,670	\$23,850
122%	\$14,237	\$29,097
133%	\$15,521	\$31,721
138%	\$16,105	\$32,913
165%	\$19,256	\$39,353
200%	\$23,340	\$47,700
205%	\$23,924	\$48,893



- Old Eligibility Standard, Regular FMAP
- New Eligibility Standard, Medicaid Clients with CHIP FMAP
- New Eligibility Standard, CHIP FMAP
- New Eligibility Standard, Regular FMAP
- Old Eligibility Standard, CHIP FMAP
- New Eligibility Standard, 100% FMAP