

Health Care Reform Changes to Medicaid

Making Good Health My Reality

Las Vegas Health Townhall

Saturday, September 14, 2013



Who is eligible for NV Medicaid Now?

Low Income...

- * Children - Newborns to 18 years old
- * Pregnant Women
- * Parent/Caretakers
- * Aged, Blind and Disabled



Who is eligible for NV Medicaid Starting January 1, 2014?

- * All previously eligible and...

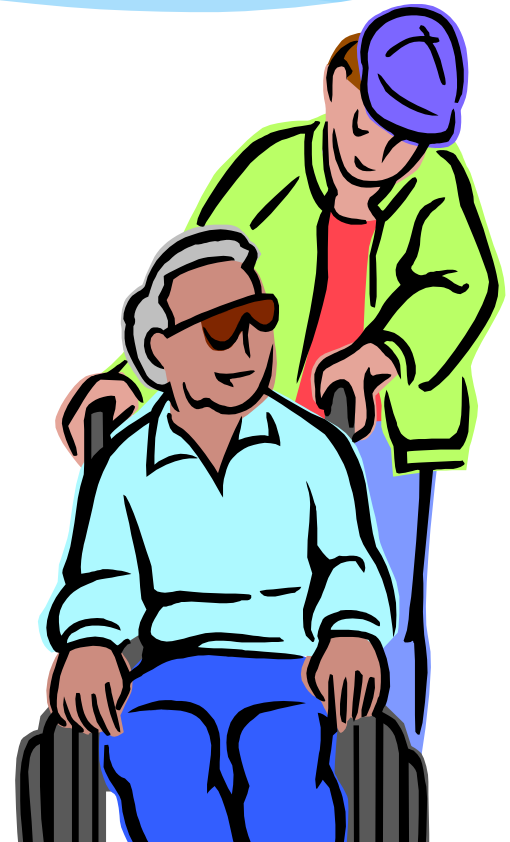
- * **Low Income**

- Childless Adults**



New Adult Population Medicaid Coverage

- * Childless Adults, Age 19 – 65
- * Some younger seniors (under age 65) and persons who have disabilities but have not yet received this designation from Social Security, if they meet the requirements for the new childless adult Medicaid expansion population, will now gain Medicaid coverage earlier than before.



Medicaid for the Aged, Blind and Disabled (MAABD)

- * There is no change to the eligibility requirements for the MAABD population
- * MAABD population will benefit from the new eligibility engine/system

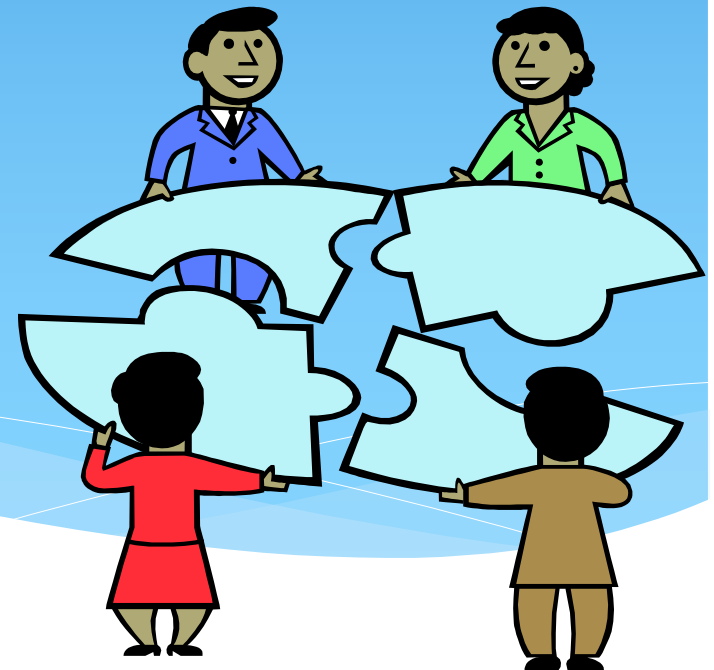


Medical Assistance Programs

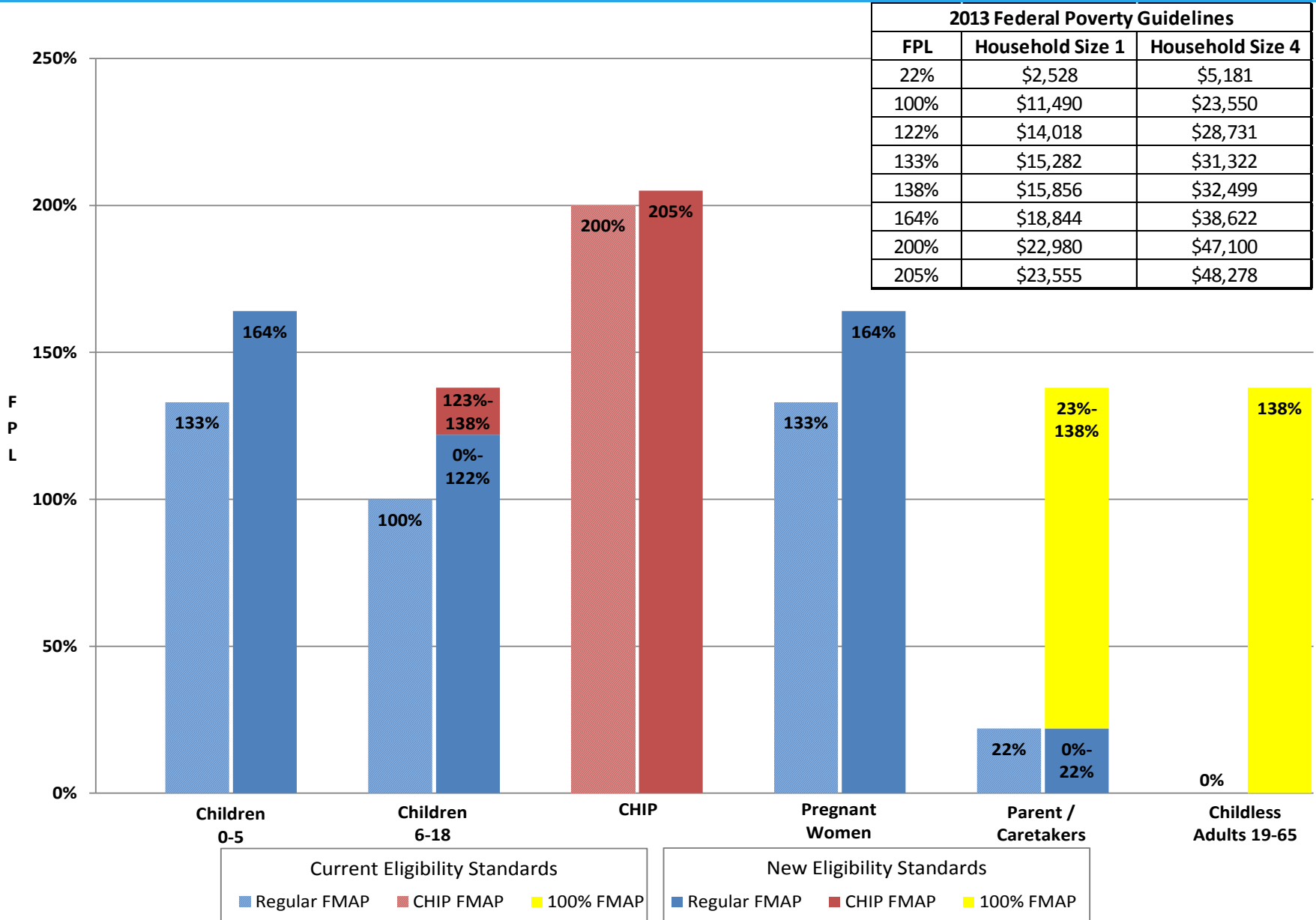
- * Transition from Foster Care
- * Emergency Medical Coverage
- * Breast & Cervical Cancer Program
- * Right of Passage
- * Medicare Beneficiaries



Changes to Guidelines for Medicaid Eligibility



Medicaid Eligibility and FMAP



New Method to Determine Eligibility

- * Starting October 1, 2013 there is a new method to determine family/household relationships and household income change.

Category	Today Household of 4	October 1, 2013 Household of 4
Children 0 – 5 years	133% FPL or \$31,322	164% FPL or \$38,622
Children 6 – 18 years	100% FPL or \$23,550	138% FPL or \$32,499
Pregnant Women	133% FPL or \$31,322	164% FPL or \$38,622

New Eligibility January 1, 2014

- * Starting January 1, 2014, Childless Adults and Parent/Caretakers are Eligible up to 138% FPL

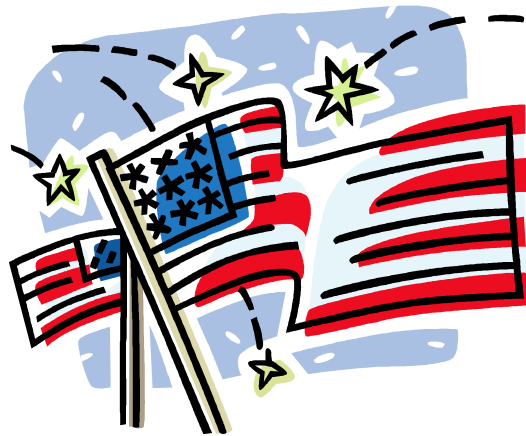
Category	Today	January 1, 2014
Childless Adults	Not eligible	138% FPL or \$15,856 Household of 1
Parent/Caretakers	22% FPL or \$5,181 Household of 4	138% FPL or \$32,499 Household of 4

Other Eligibility Requirements

* Do I have to be a Nevada Resident?

Yes

* Do I have to be a US Citizen? Yes



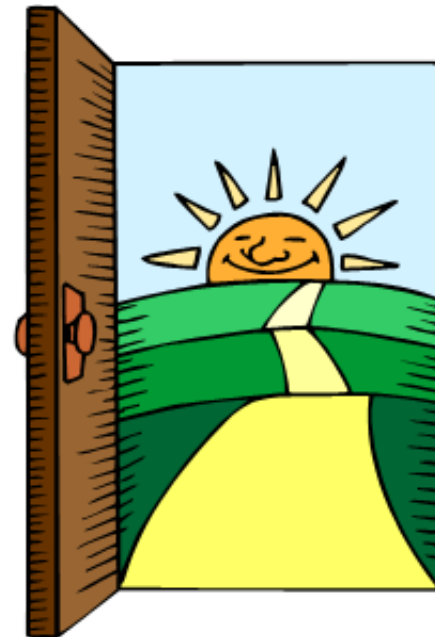
How will Children's Health Insurance NV Check Up Change?

- * The income limits will increase from 200% of Federal Poverty Level to 205% of Federal Poverty Level.
- * For example: The household annual income limit for a household of four will increase from \$47,100 to \$48,278.



No Wrong Door

- * Nevada Health Link:
www.nevadahealthlink.com
- * Nevada Health Link Customer Service
(855) 7-NVLINK; (855-768-5465)
- * Access Nevada: <https://dwss.nv.gov/>
- * Division of Welfare and Supportive Services Offices
- * Family Resource Centers



What health benefits are available as a Medicaid beneficiary?

- * Ambulatory patient services;
- * Emergency services;
- * Hospitalization;
- * Maternity and newborn care;
- * Mental health and substance use disorder services, including behavioral health treatment;



Medicaid Benefits (continued)

- * Prescription drugs;
- * Rehabilitative and habilitative services and devices;
- * Laboratory services;
- * Preventive and wellness services and chronic disease management; and
- * Pediatric services, including oral and vision care.

Other Medicaid Programs

- * Integrated (medical, behavioral, social) Care Management for our Fee For Service Population with chronic conditions
- * Families and Children living in Clark County can choose between two Managed Care Organizations to help them manage their health care:
Amerigroup and HealthPlan of Nevada (HPN)



Once Enrolled, Medicaid Members in Clark County Have Two Choices for Managed Care

Health Plan of Nevada (HPN)	Amerigroup
Customer Service (702) 242-7317 (800) 962-8074	Customer Service (702) 208-1308 (800) 600-4441
www.hpnmedicaidnvcheckup.com	www.Myamerigroup.com

Timeline:

- * September 21 – 30, 2013, the public assistance online applications program, ACCESS NV, will be down and unavailable. During this time, welfare applications must be submitted using paper forms.
- * Paper applications can be printed from Welfare's website at www.dwss.nv.gov. Paper applications are also available in all Welfare Offices and Family Resource Centers.

Welfare Offices in Southern Nevada

<p>Belrose District Office 700 Belrose St. Las Vegas, NV 89107 (702) 486-1646</p>	<p>Owens District Office 1040 W. Owens Ave. Las Vegas, NV 89106 (702) 486-1899</p>	<p>*NEW OFFICE* Opens December 2013: 3101 Spring Mountain Road Suites 3, 4, and 5 Las Vegas, NV 89102</p>
<p>Flamingo District Office 3330 E. Flamingo Rd. Suite 55 Las Vegas, NV 89121 (702) 486-9400</p>	<p>Pahrump District Office 1840 Pahrump Valley Rd. Pahrump, NV 89048 (775) 751-7400</p>	<p>*NEW OFFICE* Opens December 2013: 3223 W. Craig Rd., Suite 140 Las Vegas, 89032</p>
<p>Henderson District Office 520 S. Boulder Hwy Henderson, NV 89015 (702) 486-1001</p>	<p>Community Assistance Center 1504 N. Main St. Las Vegas, NV 89101 (702) 486-5000</p>	
<p>Nellis District Office 611 N. Nellis Blvd Las Vegas, NV 89110 (702) 486-4828</p>	<p>Cambridge Center 3900 Cambridge St. Suite 209 Las Vegas, NV 89119 (702) 486-9400 or (702) 486-1646</p>	

Timeline:

- * October 1, 2013, ACCESS NV, is back up and ready to electronically process SNAP (food stamps), TANF (cash assistance) and Medicaid applications. www.dwss.nv.gov
- * October 1, 2013, new income method will be used to determine eligibility of existing Medicaid categories.
- * October 1, 2013, enroll for Medicaid or other Health Insurance using www.nevadahealthlink.com; open enrollment for non-Medicaid health insurance ends March 31, 2014



nevada
health link

Tax Penalty

- * If you have minimum essential coverage from a Government plan such as Medicaid, Medicare, TriCare, or the VA, or coverage from a private health insurance by March 31, 2014, you should not be subject to a tax penalty.
- * Tax penalties are assessed by the IRS for each month of non-medical coverage. (Example: If your coverage begins in August 2014, you will be assessed 7 months worth of a tax penalty)
- * First year annual tax penalties are either 1% of a person's salary or \$95 per adult and \$47.50 per child in a household; whichever sum is greater. Tax penalties increase each year.
- * Some exemptions apply so it's best to check with a tax advisor.

What if My Employer Offers Insurance?

- * If you work full-time and your employer offers you health benefits but you also meet Medicaid income criteria –you can still enroll in Medicaid.

Helpful Hints to Apply for Medicaid

- * Newly eligibles, also known as, childless adults should apply for Medicaid in November to process their application for January 2014 benefits.
- * Use www.nevadahealthlink.com to apply for Medicaid. If you don't qualify for Medicaid, the system will provide other options and determine your potential tax credit benefit.
- * If you get stuck, contact NV Health Link Customer Service at (855)-7-NVLINK; (855-768-5465)



nevada
health link

