

Nevada's Medicaid Enrollees, December 2024

March 2025



Office of Analytics

Department of Health and Human Services

Table of Contents

Table of Contents	2
Introduction	3
Medicaid Enrollees maps	4
Nevada Enrolled Medicaid Participants by Zip Code.....	4
Nevada Enrolled Medicaid Participants - Las Vegas Area, Nevada.....	5
Nevada Enrolled Medicaid Participants – Reno Area, Nevada	6
Medicaid Newly Eligible individuals maps	7
Newly Eligible Individuals under Adult ACA Expansion in Nevada by Zip Code.....	7
Newly Eligible Individuals under Adult ACA Expansion in the Las Vegas Area, Nevada	8
Newly Eligible Individuals under Adult ACA Expansion in the Reno Area, Nevada	9
Appendix	10

Introduction

Medicaid is a government program that provides health insurance to adults and children with limited income and resources. In Nevada, approximately one in four residents rely on Medicaid, highlighting the significant impact of this program in the lives of Nevadans. During the Federal Public Health Emergency (PHE), states were required to maintain continuous enrollment for Medicaid recipients to retain eligibility for enhanced federal Medicaid funding during the COVID-19 pandemic. This resulted in a surge in enrollment numbers. Following the end of the PHE, the redetermination of eligibility was ongoing throughout FY 2024 and was largely completed by August 2024. Despite this, enrollment numbers have not returned to pre-pandemic levels, largely due to the program now reaching individuals who were eligible for Medicaid but had not previously accessed the program.

The maps show individuals enrolled in Medicaid during December 2024, including retroactive cases. Retroactive Medicaid acts as a safety net for eligible populations, covering medical expenses for unexpected illness or injury up to three months prior to the date of application, as long as the individual would have been Medicaid-eligible at that time. The Medicaid counts include the Nevada Check Up population, a program designed for children who do not qualify for the Medicaid program but whose household incomes are at or below 200% of the Federal Poverty Level (FPL).

These maps further break down the Medicaid population to highlight the Newly Eligible Adults under the Affordable Care Act (ACA) Expansion in Nevada. Nevada expanded its Medicaid program under the ACA in 2014 to cover adults with incomes up to 138% FPL. The maps show both the Nevada Medicaid and Newly Eligible populations, respectfully, categorized by zip codes. The appendix includes the county-level data used to create the maps.

Medicaid Enrollees Graphs

Figure 1: Nevada Enrolled Medicaid Participants by Zip Code

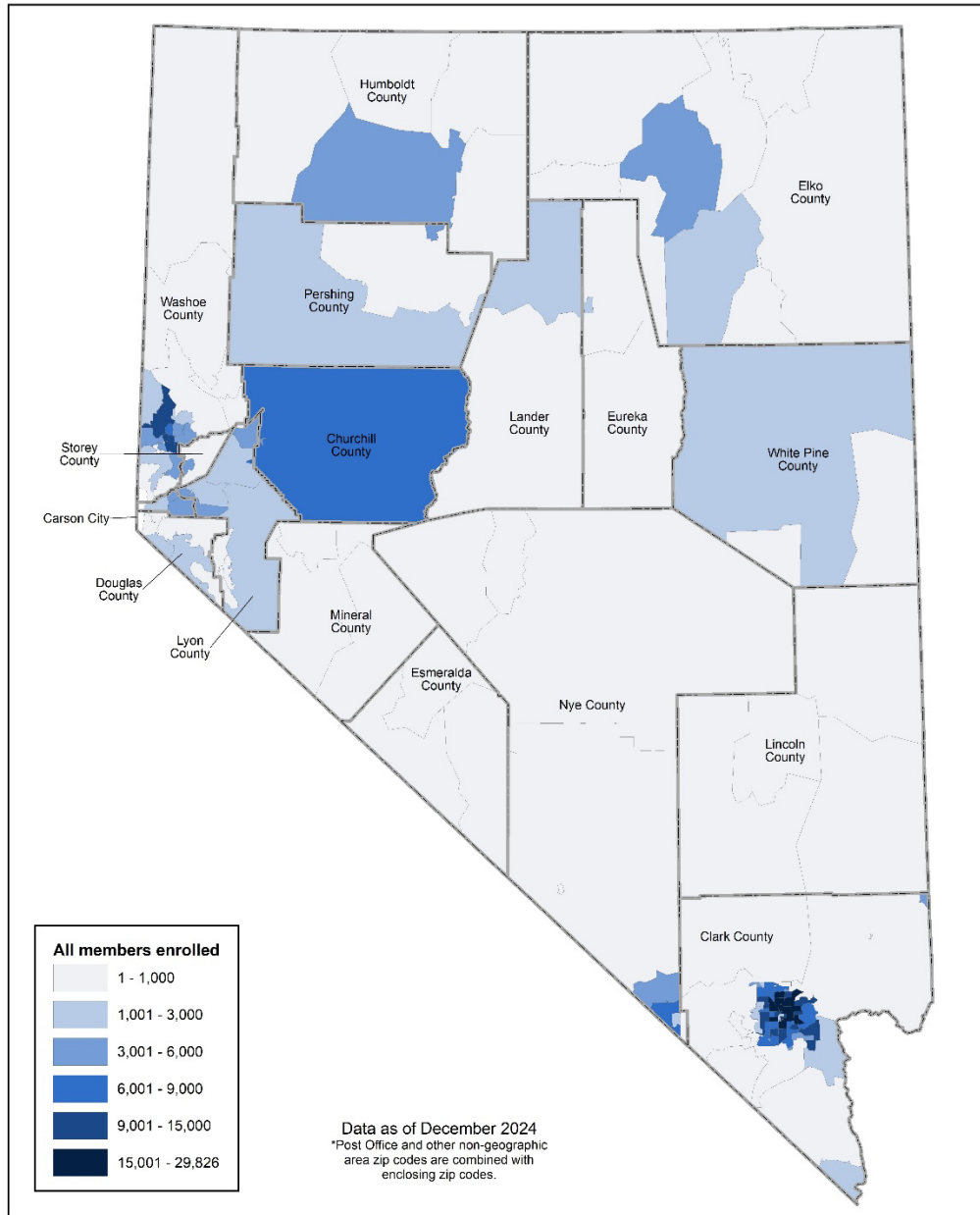


Figure 1: Medicaid enrollment in Nevada by zip code as of December 2024, darker shades represent areas with higher enrollment, with the highest concentrations in Clark and Churchill counties. Rural areas have significantly lower enrollment, reflecting population density differences.

Figure 2: Nevada Enrolled Medicaid Participants by Zip Code, Las Vegas Area, Nevada

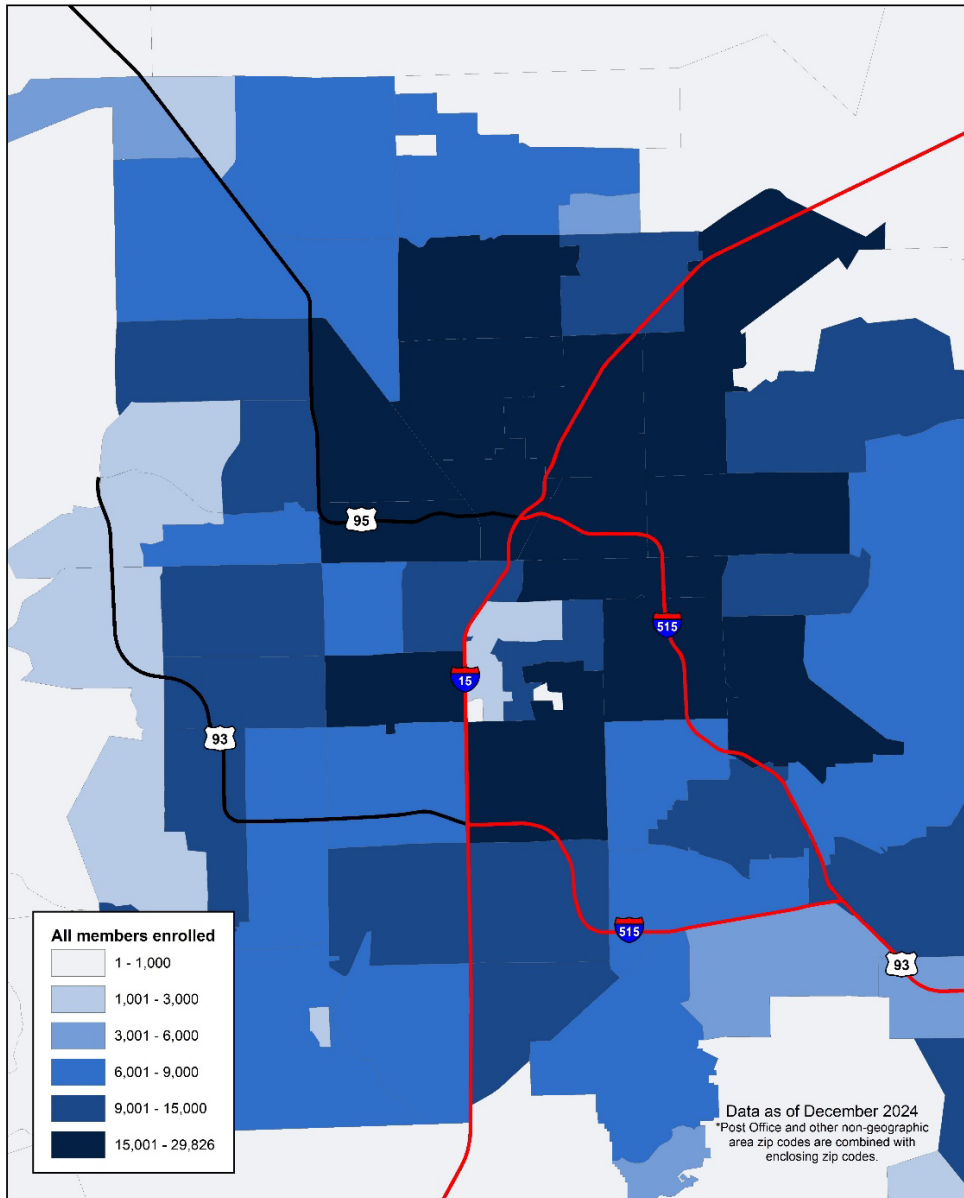


Figure 2: Medicaid enrollment by zip code in Las Vegas, Nevada, as of December 2024. The highest concentrations of enrollees are found in central and northern Las Vegas. Major highways (I-15, I-515, US-93, US-95) are highlighted, illustrating Medicaid coverage in relation to transportation routes.

Figure 3: Nevada Enrolled Medicaid Participants by Zip Code, Reno Area, Nevada

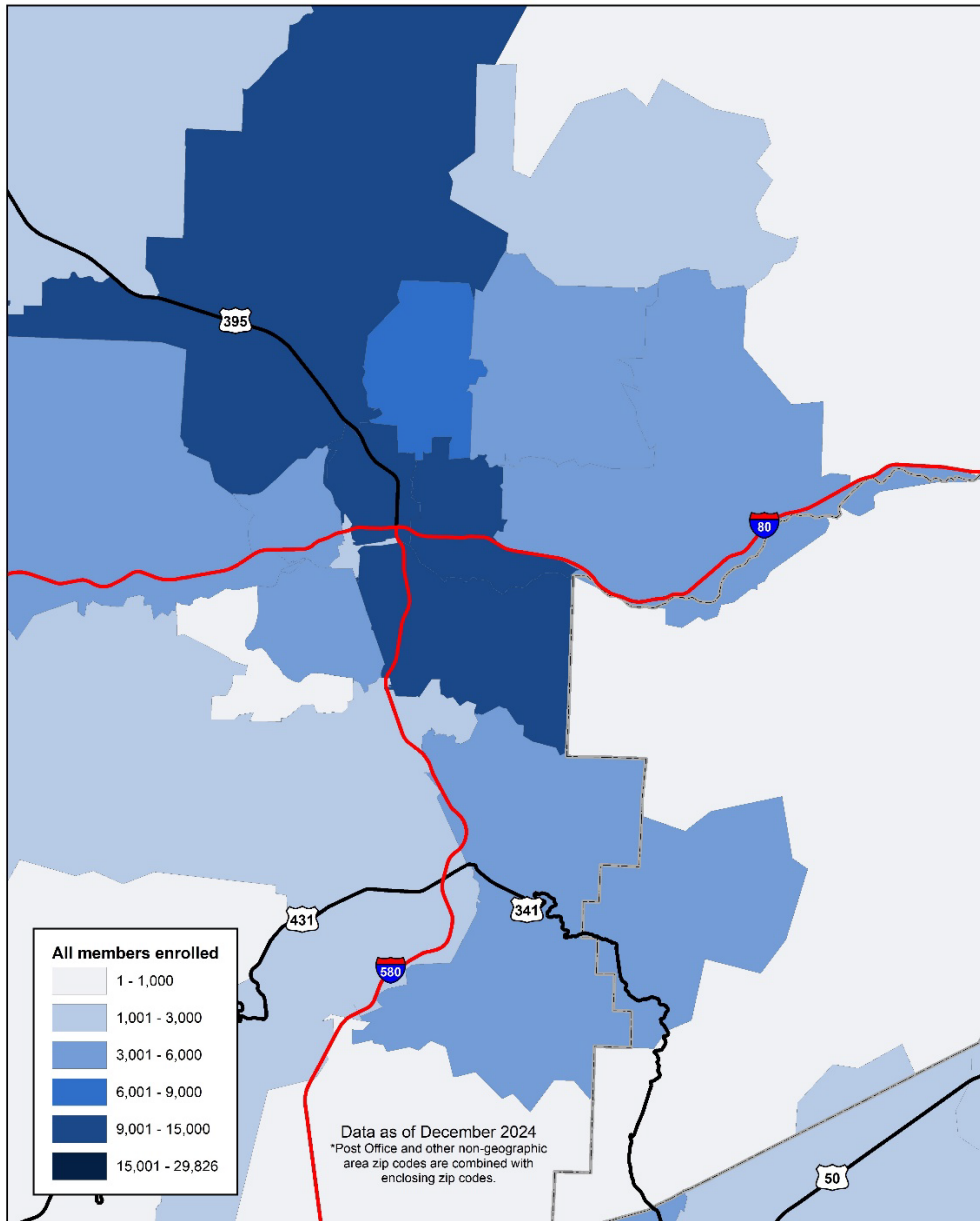


Figure 3: Medicaid enrollment by zip code in Reno, Nevada, as of December 2024, with darker shades indicating higher enrollment. The highest concentrations of enrollees are in central and northern Reno, while outlying regions shows significantly lower numbers. Major highways (I-80, I-580, US-395, SR-431, and SR-341) are marked, providing context for medical coverage relative to transportation routes.

Medicaid Newly Eligible Individuals Graphs

Figure 4: Medicaid, Newly Eligible Individuals under Adult ACA Expansion in Nevada by Zip Code – December 2024

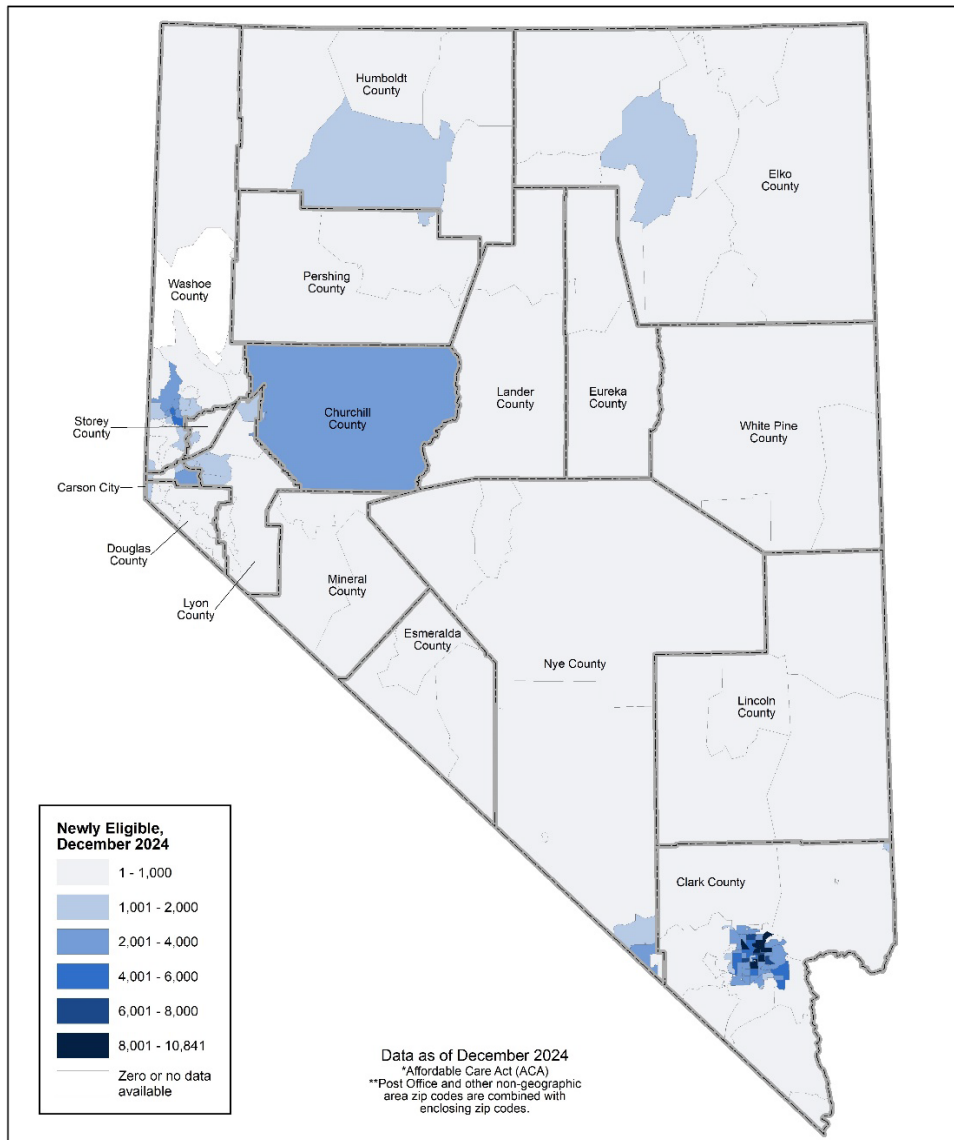


Figure 4: Number of newly eligible Medicaid recipients under the ACA expansion in Nevada by zip code as of December 2024. The highest concentrations of newly eligible individuals are in urban areas like Las Vegas and Reno, while most rural regions have lower numbers.

Figure 5: Medicaid, Newly Eligible Individuals under Adult ACA Expansion in the Las Vegas Area, Nevada by Zip Code – December 2024

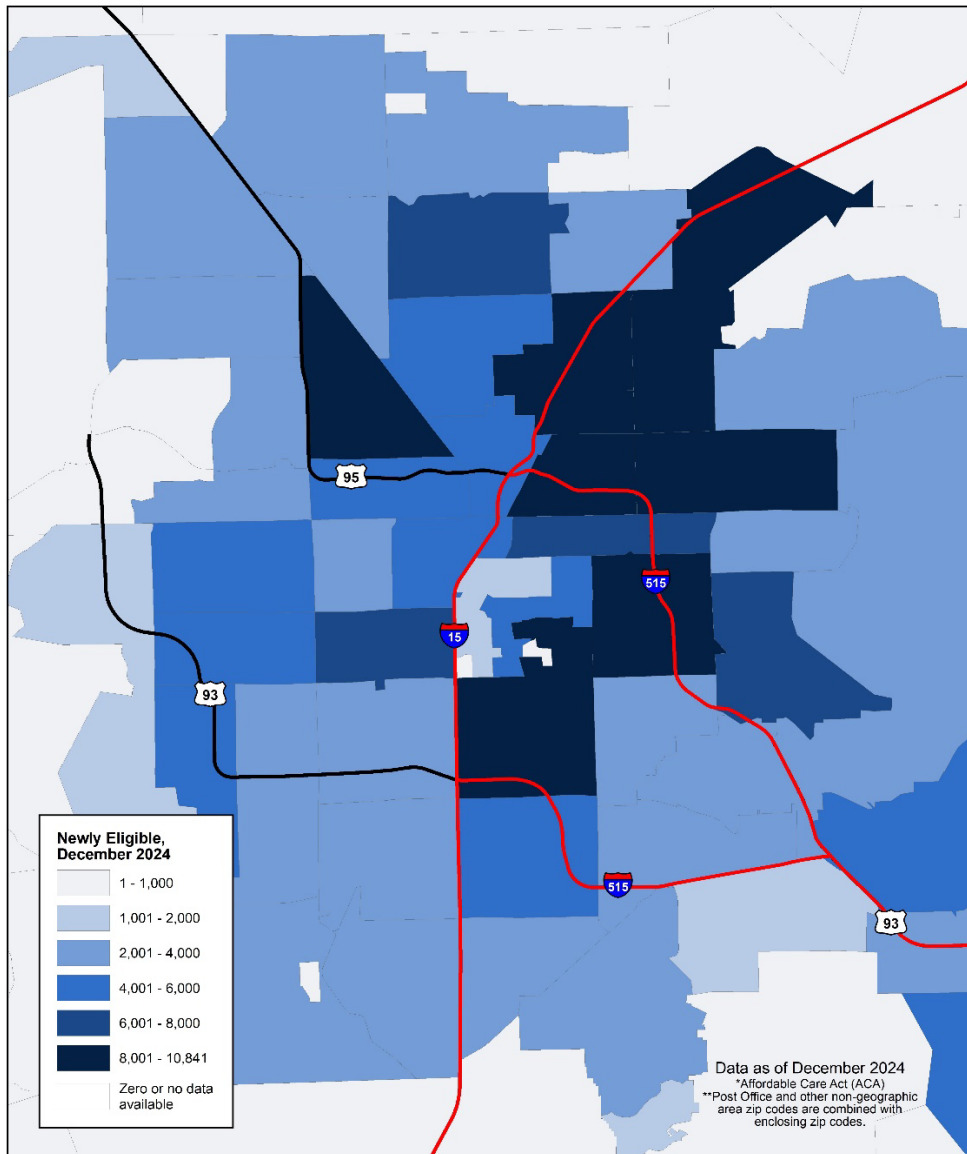


Figure 5: Number of newly eligible Medicaid recipients under the ACA expansion in the Las Vegas area as of December 2024. Darker shades indicate higher concentrations of newly eligible individuals, with central and northern Las Vegas seeing largest increases. Major highways (I-15, I-515, US-95, and US-93) are marked, providing context for Medicaid expansion relative to key transportation routes.

Figure 6: Medicaid, Newly Eligible Individuals under Adult ACA Expansion in the Reno Area, Nevada by Zip Code – December 2024

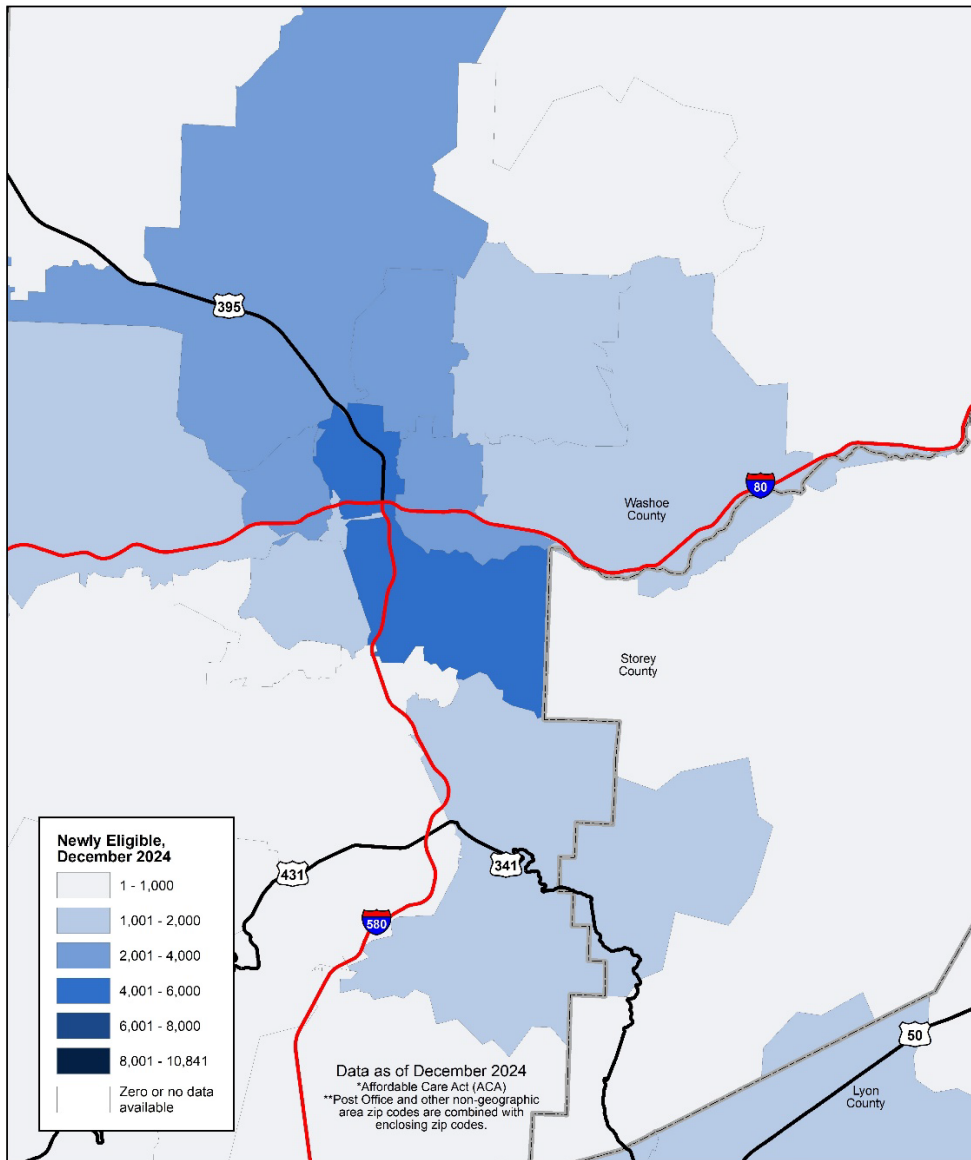


Figure 6: Number of newly eligible Medicaid recipients under the ACA expansion in the Reno area as of December 2024. Higher concentrations of newly eligible individuals are found in central and northern Reno, Major highways (I-80, US-395, SR-431, SR-341, and SR-50) are marked, providing context for Medicaid expansion relative to key transportation routes.

Appendix

County	Medicaid Participants	Medicaid Participants Eligible under ACA Expansion
Carson City	13,016	4,402
Churchill	6,262	2,101
Clark	649,693	232,700
Douglas	6,122	2,231
Elko	10,307	3,214
Esmeralda	157	64
Eureka	357	116
Humboldt	4,032	1,208
Lander	1,151	380
Lincoln	919	319
Lyon	12,543	4,258
Mineral	1,432	503
Nye	16,504	6,447
Pershing	1,119	381
Storey	175	72
Washoe	93,807	32,736
White Pine	1,963	653
Unknown	11,352	1,776
Total	817,895	289,159